

Technical Annexe for more information on how Carmarthenshire's 2015/16 results compare to other Councils in Wales

October 2016

Please also see our
[Summary version](#)



EICH CYNGOR arleinamdani
www.sirgar.llyw.cymru

YOUR COUNCIL doitonline
www.carmarthenshire.gov.wales

Background

The Wales Audit Office has consistently found that our public reporting of performance is “*fair and balanced*” and along with the good news, inconvenient news is also reported, although there is not much of it. ‘*We are going to make the Council the most open and transparent Council in Wales to enable us to make continuous improvement*’.

In the National Survey for Wales in June 2015, **42%** of citizens in Carmarthenshire say that *the council is good at letting people know how it is performing* – (39% disagreed). This is the **7th** best result in Wales (the best result was 51%).

- In July of this year we published the Council’s [Annual Report 2015/16 and Improvement Plan 2016/17](#) that provided (as our Auditors have repeatedly recognised) a very comprehensive and balanced report on performance in the previous year and improvement actions and targets, despite budget reductions, for the year ahead.
- In this supplement document we examine **how Carmarthenshire’s 2015/16 results compare** to the newly available performance results for all other Councils in Wales. These results were published by Local Government Data Unit on 7th September 2016.



LGDU - [Local Authority Performance Bulletin 2015-16](#)

For the results of other Councils [infobasecymru](#) and [www.mylocalcouncil.info](#)

Introduction and Contents

	Page
There are two main ways of measuring improvement:-	
• The % of the measures that have improved _____	3
• How our results compare with other Councils in Wales _____	4
How our results rank with other Councils _____	5-6
Results , comparison data, targets and explanations for all measures _____	7-17
How this information shapes future plans _____	18

The percentage of the measures that have improved during 2015/16

During 2015/16, **57.5%** of our measures improved while 25% have declined and 17.5% remained the same; this builds on the improvement achieved in 2014/15 and still remains encouraging in the current climate of reduced budgets.

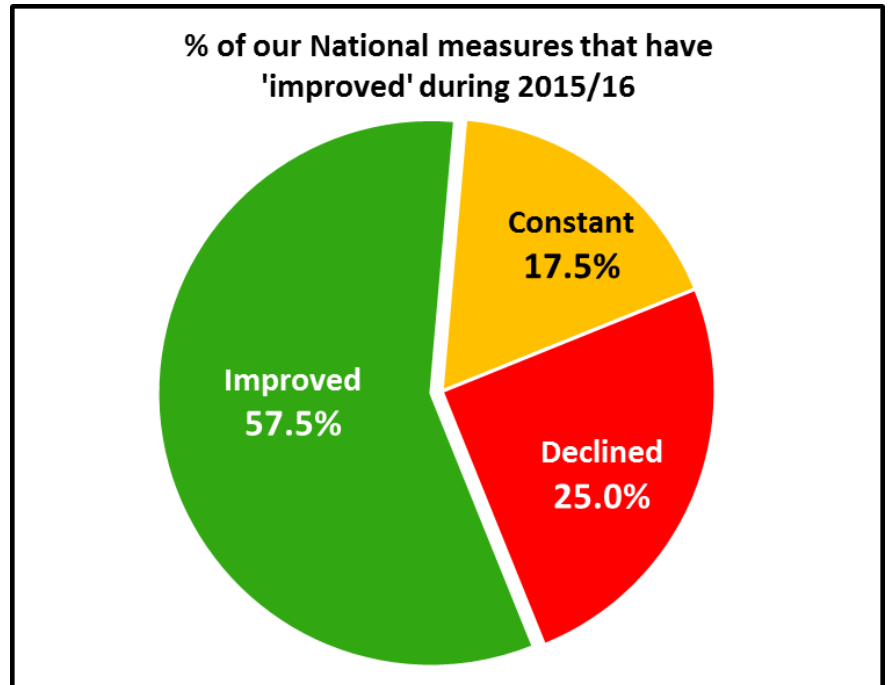


Figure 1

Figure 2 below shows our year on year results:

Year	Improved	Constant	Declined	Net Improvement (Improved - Declined)
2015/16	57.5% (23 measures)	17.5% (7 measures)	25% (10 measures)	32.5%
2014/15	56% (24 measures)	14% (6 measures)	30% (13 measures)	26%
2013/14	61% (27 measures)	9% (4 measures)	30% (13 measures)	31%

Figure 2

Figure 3 shows how our improvement in these measures compares to other authorities in Wales, of which we are **joint 6th highest** compared to joint 10th in 2014/15

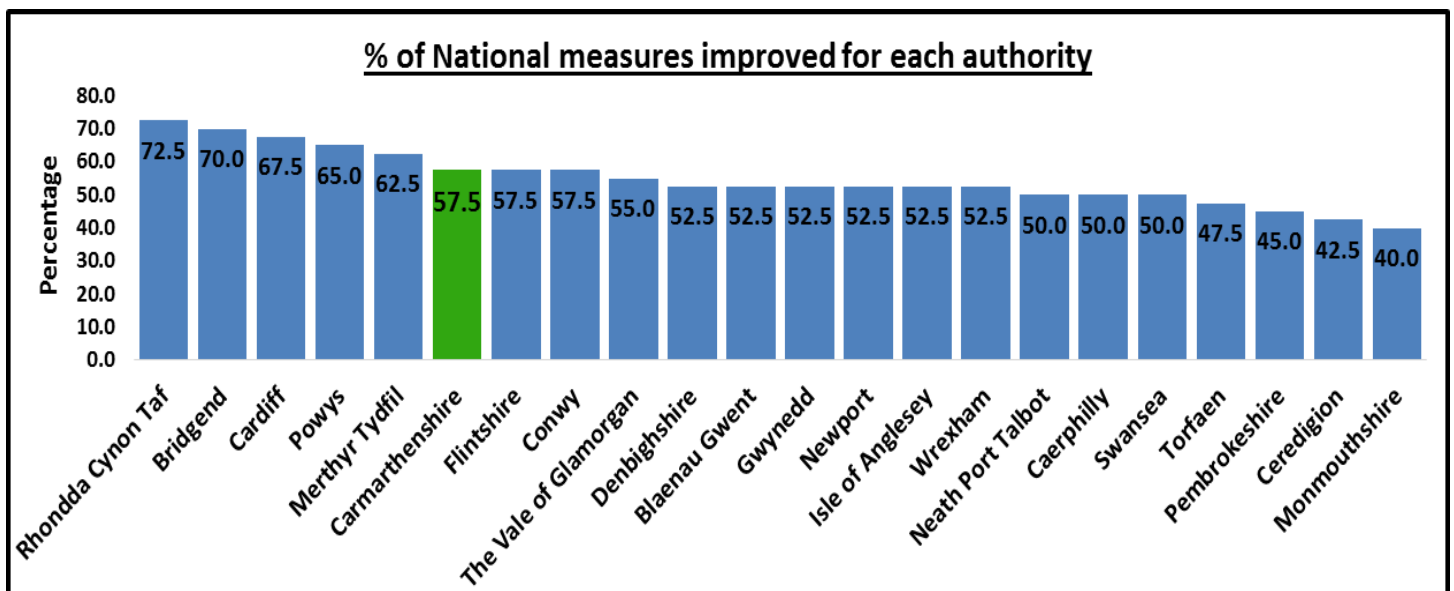


Figure 3

How our 2015/16 results compare with other Councils in Wales

An established way of comparing results is to look at the proportion of indicators that an authority has in the upper quarter of results, the lower quarter and above and below the median result.

Figure 4 below shows how our results compare with other Councils in Wales in 2015/16

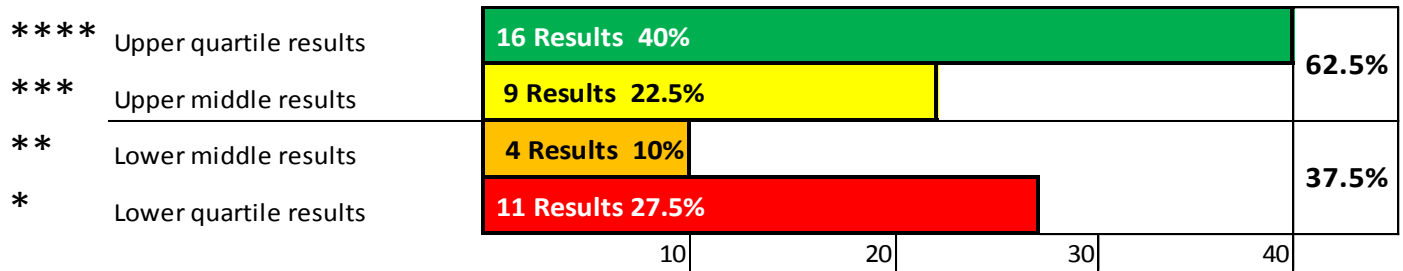


Figure 4

For 2015/16 **62.5%** of our measures are in the **upper two quartiles** with 37.5% in the lower two quartiles compared 60% in 2014/15, an excellent achievement.

Our performance over the last few years

The graph below (Figure 5) shows our comparative performance over the last 8 years

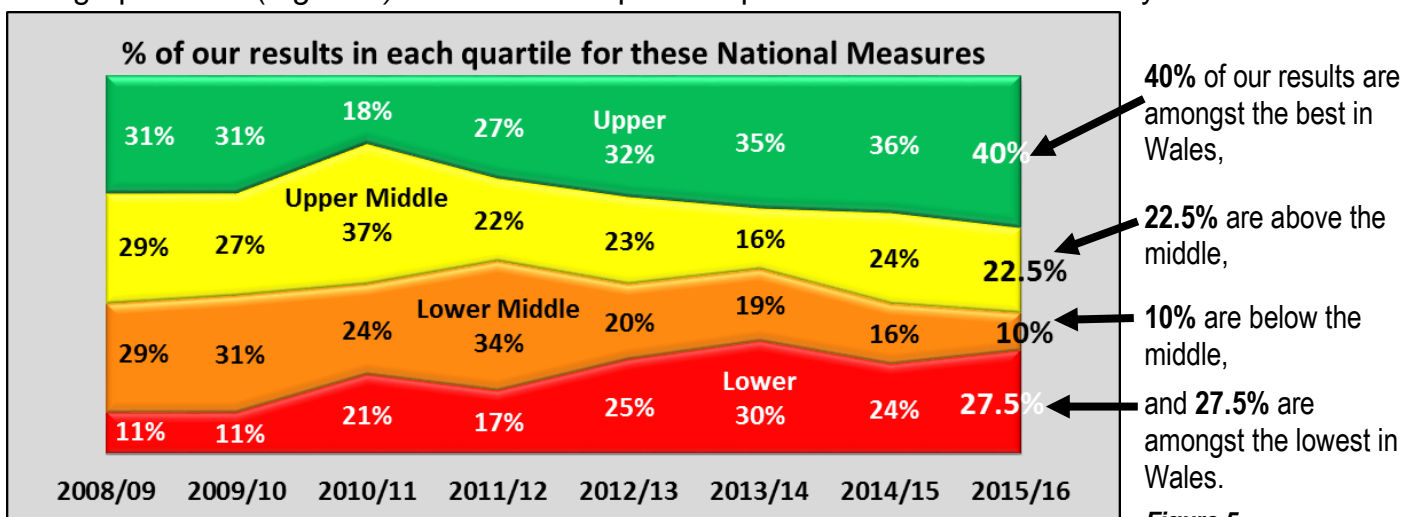


Figure 5

The number in the Upper quartile has increased for 2015/16, and the total in the upper half has increased to **62.5%** compared to 60% for 2014/15.

Figure 6 below shows how we rank against all authorities in Wales in our quartile positions – this is based on a score of 4 points for each measure in the upper quartile, 3 points for those in the upper middle quartile, 2 points for those in the lower middle quartile and 1 point for those measures in the lower quartile.

By further improving our results during 2015/16 we now have additional measures in the upper quartile, we therefore have moved up to joint **5th** position compared to joint 7th in 2014/15.

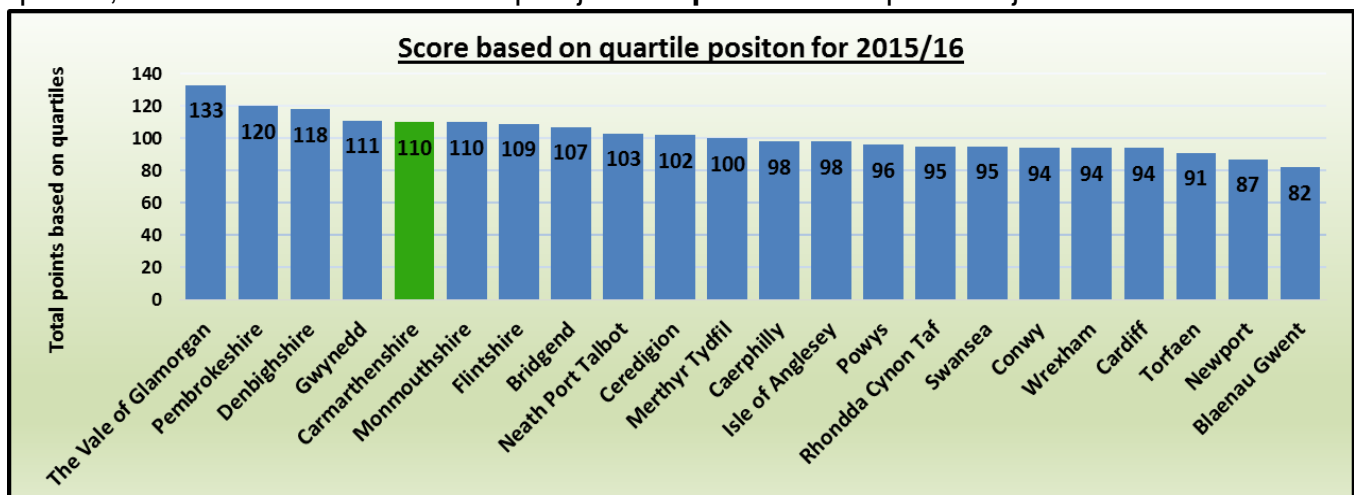


Figure 6

The table below shows the following information on measures that all 22 councils in Wales have to collect:-

- Our 2015/16 result and whether it has improved on our 2014/15 result
- Our quartile (star rating) compared to other Council's in Wales
- Our Rank position for 2015/16 compared to our Rank position for 2014/15
- Whether our target set for 2016/17 has been set to improve performance

The 41 measures published by all councils in Wales	Has our result improved from 2014/15 to 2015/16		How good is our 2015/16 result? ★ = Bottom (Worst) ★★ = Bottom to Middle ★★★ = Middle to top ★★★★ = Top (Best)	22 nd	21 st	20 th	19 th	18 th	17 th	16 th	15 th	14 th	13 th	12 th	11 th	10 th	9 th	8 th	7 th	6 th	5 th	4 th	3 rd	2 nd	1 st	Target Set to improve for 2016/17 ✓ or ✗			
	Our 2015/16 result	Improved ↑ Standstill ↔ Declined ↓		Worst results												Best Results													
				Arrows start from our 2014/15 position												to our 2015/16 position													
Building a Better Council																													
1	Number days lost due to sickness absence. (CHR/002)	10.1	↓	★★★																							✓		
People in Carmarthenshire are healthier																													
2	Visits to Sport & Leisure facilities per 1000 population (LCS/002b)	6,905	↓	★																							✓		
3	% Food premises broadly compliant with standards (PPN/009)	94.98	↑	★★★																							✗		
4	Days taken to deliver a Disabled Facilities Grant (PSR/002)	232	↑	★★★																							✓		
5	Delayed transfer of Care (SCA/001)	4.69	↑	★★																							✓		
6	Supported in the community (65 or over) (SCA/002a)	57.92	↓	★★	Due to unreliable comparable data, Welsh Government do not wish this measure to be compared across authorities.																							Deleted 2016/17	
7	Residential Care (65 or over) (SCA/002b)	18.74	↑	★★																							Deleted 2016/17		
8	% new affordable housing units/all new housing units (PLA/006b)	8	↔	★	Same																						✓		
9	% Private sector dwellings returned to occupation (PSR/004)	5.73	↑	★★																							✓		
10	% Clients with care plan at 31st March- reviewed (SCA/007)	74.7	↑	★																							Deleted 2016/17		
11	% Carers offered an assessment in their own right (SCA/018a)	100.0	↔	★★★★																					Same Joint 5	Deleted 2016/17			
People in Carmarthenshire fulfil their learning potential																													
12	% Pupils achieving Key Stage2 Teacher Assessment (EDU/003)	88.2	↑	★★★																							✓		
13	% Pupils achieving Key Stage3 Teacher Assessment (EDU/004)	85.1	↑	★★★																							✓		
14	Average point score in external qualifications (EDU/011)	580.3	↑	★★★★																							✓		
15	% Achieved the Level 2 threshold (EDU/017)	61.1	↑	★★★																							✓		
16	Number of visits to Public Libraries per 1,000 population (LCL/001b)	7,203	↑	★★★★																					Same	✓			
17	Average qualifications score for looked after children (SCC/037)	334	↑	★★★★																							Deleted 2016/17		
18	% Pupils leaving with no qualification (EDU/002i)	0.0	↔	★★★★																					Same Joint 6	At max result			
19	% Pupils in care leaving with no qualification (EDU/002ii)	0.0	↔	★★★★																					Same Joint 20	At max result			

The 41 measures published by all councils in Wales			Has our result improved from 2014/15 to 2015/16		How good is our 2015/16 result? ★ = Bottom (Worst) ★★ = Bottom to Middle ★★★ = Middle to top ★★★★ = Top (Best)	22 nd	21 st	20 th	19 th	18 th	17 th	16 th	15 th	14 th	13 th	12 th	11 th	10 th	9 th	8 th	7 th	6 th	5 th	4 th	3 rd	2 nd	1 st	Target Set to improve for 2016/17 ✓ or ✗																		
			Our 2015/16 result	Improved ↑ Standstill ↔ Declined ↓		Worst results												Best Results																												
						Arrows start from our 2014/15 position												to our 2015/16 position																												
People in Carmarthenshire fulfil their learning potential																																														
20	% Pupil attendance in primary schools (EDU/016a)	95.2	↑	★★★★★																			Same						✓																	
21	% Pupil attendance in secondary schools (EDU016b)	94.2	↑	★★★																									✓																	
22	% Of statements submitted < 26 weeks incl exceptions (EDU/015a)	34.8	↑	★																									✓																	
23	% Of statements submitted < 26 weeks excl exceptions (EDU015b)	80.0	↑	★																									✓																	
24	% achieving Welsh (first language) Key Stage 3 (EDU/006ii)	43.2	↑	★★★★★																								✓																		
People who live, work and visit Carmarthenshire are safe and feel safer																																														
25	% Adult protection referrals - risk managed (SCA/019)	92.61	↓	★																									Deleted 2016/17																	
26	% Looked-after children changing school (SCC/002)	3.9	↑	★★★★★																								✗																		
27	% Children in care with 3 or more placements in the year (SCC/004)	14.9	↓	★																								✓																		
28	% Initial assessments - been seen alone by Social Worker (SCC/011b)	46.5	↓	★																								Deleted 2016/17																		
29	% Statutory visits to looked after children (SCC/025)	98.2	↓	★★★★★																								Deleted 2016/17																		
30	% 19yr olds formerly looked after- LA in contact (SCC/033d)	100.0	↔	★★★★★																								Deleted 2016/17																		
31	% 19yr olds once looked after, non-emergency accom (SCC/033e)	94.7	↑	★★★																								Deleted 2016/17																		
32	% 19yr olds in education, training, employment (SCC/033f)	73.7	↑	★★★																								Deleted 2016/17																		
33	% Children that have pathway plans as required (SCC/041a)	100.0	↔	★★★★★																								Deleted 2016/17																		
34	% of childrens reviews carried out on time (SCC/045)	89.4	↔	★																								Deleted 2016/17																		
Carmarthenshire's communities and environment are sustainable																																														
35	% Change in average Display Energy Certificate score (CAM/037)	7.2	↑	★★★★★	New measure for 2015/16 therefore no previous year's position available																																									✓
36	% Highways inspected for high/acceptable standard (STS/005b)	98.9	↓	★★★★★																									✗																	
37	% Municipal wastes sent to landfill (WMT/004b)	5.25	↑	★★★★★																									✗																	
38	% Municipal waste reused, recycled or composted (WMT/009b)	63.52	↑	★★★★★																									✗																	
39	% Reported fly tipping cleared in 5 working days (STS/006)	87.24	↓	★																									✓																	
40	% Adults aged 60+ with a concessionary travel pass (THS/007)	80.6	↓	★★																									✗																	
41	% (A) (B) & (C) roads that are in poor condition (THS/012)	10.7	↑	★																									✓																	

The following tables provide detailed measure by measure profiles for performance measures that are measured by all Councils in Wales

Our Key Measures of success – 2015/16 results and targets for 2016/17										
Definition / Measure Reference	How well have we done?	How well are we doing?							Improvement	
		See explanation of performance				All Wales Comparative Info.				
	2014/15	2015/16				2016/17				
	Our Result	Target	Final Result	Target Met ☺ or ☹	Did we improve ▲ or ▼	Welsh Best Quartile	Welsh Median	How we compare in Wales * to ****	Target Set	Target Set to improve against Actual Result ✓ or ✗
Key measure(s) SCA/001 The rate of delayed transfers of care for social care reasons per 1,000 population aged 75 or over	6.18	5.77	4.69	☺	▲	2.44	4.33	**	4.51	✓
An explanation of performance is provided here when off target, poor comparative performance and/or future target has not been set to improve.										

Definition: What we are measuring?
A brief description of the performance measure

How did we perform during 2014/15?

Our final result for 2015/16

A comparison between our 2014/15 result, and our 2015/16 performance. Did we improve?
▲ (Yes) or ▼ (No)

The minimum performance level required to be amongst the top 5 Welsh councils

Is the 2016/17 performance target set to improve on the 2015/16 result?
✓ (Yes) or ✗ (No)

How does our result compare with other Local Authorities?
* Worst Quartile to
**** Best Quartile

Our target set for 2015/16

Did we meet our 2015/16 Target?
☺ (Yes) or ☹ (No)

The mid-range performance within Wales

Our 2016/17 performance target

Performance measures that are measured by all Councils in Wales for 2015/16

2015/16 results and targets for 2016/17

	How well have we done?	How well are we doing?							Improvement		
		See explanation of performance				All Wales Comparative Info.					
Definition / Measure Reference	2014/15	2015/16							2016/17		Improvement Plan Theme
	Our Result	Target	Final Result	Target Met ☺ or ☹	Did we improve ▲ or ▼	Welsh Best Quartile	Welsh Median	How we compare in Wales * to ****	Target Set	Target Set to improve against Actual Result ✓ or ✗	
1 CHR/002 The number of working days/ shifts per full time equivalent (FTE) local authority employee lost due to sickness absence.	9.6 days	9.3 days	10.1 days	☹	▼	9.6 days	10.2 days	***	9.6 days	✓	Building a Better Council
	The result has declined for 2015/16 by half a day after an excellent improvement during 2014/15. Despite this, we have moved from 10th to 7th place compared to other authorities in Wales. According to the Chartered Institute of Personnel and Development Survey the trend for sickness absence in the public sector shows an increase of one day. The main services where sickness absence has increased are school staff and adult social care. There continues to be some long term sickness cases which have been managed through the process appropriately, however, in some areas there needs to be greater emphasis on application of the policy and quicker intervention. There has been an increase in sickness due to stress, mental health and fatigue which equates to quarter of the total sick days during 2015/16 compared to 22% last year with many cases related to issues at home. Musculo skeletal problems are the second highest cause of absence at 15% which is 2% lower than for 2014/15. We will further promote robust sickness absence management within departments and are considering setting departmental targets. We shall also provide more targeted briefings which we hope will improve the management of attendance and consistency of reporting. The use of the in-house stress management/Cognitive Behavioural Therapy services continues and is focused on supporting stress, anxiety and depression, alongside management interventions and support.										
2 LCS/002 The number of visits to local authority sport and leisure centres during the year where the visitor will be participating in physical activity, per 1,000 population	7,028	7,100	6,905	☹	▼	9,382	8,231	*	7,251	✓	People in Carmarthenshire are Healthier
	Whilst there was an overall reduction of 2% in attendances at Sport & leisure facilities in 2015-16 when compared to 14-15 (21,067 attendances), attendances increased at council-operated leisure centres. This is demonstrated by recording over 70,000 more attendances in 2015-16. However, due to a restructure of the Sport Development Officers and the cessation of external funding from certain national governing bodies for sport, officers are now fewer in number and have more of a remit to work with deliverers than to be directly involved with activity delivery. Rugby, for example, were responsible for circa 20,000 attendances which we can no longer account for. The model that Sport & leisure Officers are now working to is more facilitates more sustainable activity and can affect a greater number of participants but we no longer collect as much attendance data as we no longer provide the activity. This has resulted in over 90,000 less attendances being recorded by officers, decreasing from 271,119 to 180,346. We are seeing continual growth in much of what is provided via our Sport & Leisure facilities, for example our swim scheme membership has reached higher levels than ever before and our fitness offer is expanding currently to cater for demand – both resulting in significant increases in income and participation.										

Definition / Measure Reference	2014/15	2015/16							2016/17		Improvement Plan Theme
	Our Result	Target	Final Result	Target Met ☺ or ☹	Did we improve ▲ or ▼	Welsh Best Quartile	Welsh Median	How we compare in Wales * to ****	Target Set	Target Set to improve against Actual Result ✓ or ✗	
3 PPN/009 The percentage of food establishments which are 'broadly compliant' with food hygiene standards	94.16%	93.00%	94.98%	☺	▲	95.66%	94.28%	***	93.00%	✗	People in Carmarthenshire are Healthier
Despite being on target and showing an improvement for 2015/16 the target for 2016/17 of 93% has not been set to improve and is deemed to be reflective of a transient business sector. Compliance level is based on individual business performance and as such is not reflective of Local Authority input. A 7% non broadly compliant figure is set aside to account for failing premises, which will become a primary focus for Local Authority intervention with a main aim of ensuring future progressive compliance, which can only be assessed and reflected at the next programmed inspection (normally spanning a separate financial year). Regular monitoring of performance will continue throughout the year, working with Food Business Operators to achieve as high a standard as possible.											
4 PSR/002 The average number of calendar days taken to deliver a Disabled Facilities Grant	252 days	235 days	232 days	☺	▲	189 days	235 days	***	220 days	✓	People in Carmarthenshire are Healthier
5 SCA/001 The rate of delayed transfers of care for social care reasons per 1,000 population aged 75 or over	6.18	5.77	4.69	☺	▲	2.44	4.33	**	4.51	✓	People in Carmarthenshire are Healthier
A good improvement during 2015/16 with a reduction from 113 to 87 patients experiencing a delay in leaving the hospital. We are working ever closer with the Health Board to resolve any issues. A multi disciplinary team is working in the two general hospitals in Carmarthenshire to improve the links between the community and acute sector. They are developing models that assist to avoid admission and reduce lengths of stay in hospital, improving the well being of older people for whom hospital admission can have negative consequences. We have also established a Rapid Response domiciliary care service to respond immediately to prevent hospital admissions, support people to stay in their own home and to facilitate early hospital discharges.											
6 SCA/002a The rate of older people Supported in the community per 1,000 population aged 65 or over at 31 March	61.87	58.93	57.92	☹	▼	Not applicable		This measure has been deleted for 2016/17			People in Carmarthenshire are Healthier
This statutory measure expects as many older people as possible to be helped to live at home. However as a Council we want to promote independent living and our innovative range of services aims to support people via community based services. Reductions in day care and meal provision have resulted from efforts to find community-based options that promote involvement in their local community.											
7 SCA/002b The rate of older people whom the authority supports in care homes per 1,000 population aged 65 or over at 31 March	20.48	19.59	18.74	☺	▲	15.55	18.52	**	This measure has been deleted for 2016/17		People in Carmarthenshire are Healthier
This measure has been deleted for 2016/17 and will be replaced by new measures from the new Social Care Act.											

Definition / Measure Reference	2014/15	2015/16							2016/17		Improvement Plan Theme
	Our Result	Target	Final Result	Target Met ☺ or ☹	Did we improve ▲ or ▼	Welsh Best Quartile	Welsh Median	How we compare in Wales * to ****	Target Set	Target Set to improve against Actual Result ✓ or ✗	
<p>8 PLA/006b The number of additional affordable housing units provided during the year as a percentage of all additional housing units provided during the year.</p>	8%	9%	8%	☹	▼	51%	33%	*	30%	✓	People in Carmarthenshire are Healthier
<p>As per the Welsh Government guidance, the 2015/16 result for this measure is based on Affordable Housing performance data from 2014/15. Our actual performance in 2015/16 will be reported by this measure in 2016/17. The number of affordable homes delivered was normally dependant on the use of Social Housing Grant (i.e. Housing Association new build homes) and the section 106 provisions of the planning system. In 2014/15 the provision of affordable housing was however, dependant mainly on the use of Social Housing Grant. During this time, this funding was focused on providing high quality accommodation, promoting independent living and meeting the specific needs of older people, by delivering two extra care schemes, Cartref Cynnes, Carmarthen and Ty Dyffryn, Ammanford. The development of these extra care schemes spanned a two year period. Delivery began in 2014/15 with the 111 affordable units becoming available for occupation in 2015/16.</p> <p>From a planning perspective in 2014/15, the development of affordable homes was largely based on the policies of the Unitary Development Plan (UDP). The UDP whilst making provisions for affordable housing, it did not specify actual numbers or the percentage of affordable housing units to be delivered on individual sites. The new Local Development Plan (adopted December 2014), however, provides a more positive framework for delivering affordable home. It specifies the number of affordable units to be delivered using percentage targets for sites throughout the county. It also requires affordable housing commuted sums on all residential sites including those with less than 5 dwellings. The number of affordable housing units delved through the LDP is expected to exceed 2,000 homes.</p> <p>Moving forward from 2014/15 we have developed an Affordable Housing Commitment and Delivery Plan that will see the delivery of over 1,000 affordable homes between 2016 and 2020. This plan will widen the range of options available to increase the supply of affordable homes. This will include not only the provision of affordable housing through Section 106 developer contributions and social housing grant the options will now also include:</p> <ul style="list-style-type: none"> • Managing affordable homes through the Social Lettings Agency • Bringing empty homes back into use as affordable units • Increasing the Councils housing stock by buying private sector homes • Council new build 											
<p>9 PSR/004 % of private sector dwellings that had been vacant for more than 6 months at 1 April that were returned to occupation during the year through direct action by the local authority.</p>	5.45%	5.24%	5.73%	☺	▲	13.82%	6.43%	**	6.00%	✓	People in Carmarthenshire are Healthier

Definition / Measure Reference	2014/15	2015/16							2016/17		Improvement Plan Theme
	Our Result	Target	Final Result	Target Met ☺ or ☹	Did we improve ▲ or ▼	Welsh Best Quartile	Welsh Median	How we compare in Wales * to ****	Target Set	Target Set to improve against Actual Result ✓ or ✗	
10 SCA/007 % of clients with a care plan at 31st March whose care plans should have been reviewed that were reviewed during the year	71.9%	80.0%	74.7%	☹	▲	90.3%	82.9%	*	This measure has been deleted for 2016/17		People in Carmarthenshire are Healthier
Whilst we did not meet our 2015/16 target, it's important to acknowledge that since 2013/14 the percentage of reviews that should be reviewed increased from 63.8% to 74.7% (2015/16). We recognise that this is an area that we need to prioritise and have secured Intermediate Care Fund (ICF) funding to appoint multidisciplinary teams in the three localities ensuring continued improvement in performance in this area.											
11 SCA/018a % of carers of adults who were offered an assessment or review of their needs in their own right during the year	100.0%	100.0%	100.0%	☺	At maximum result	99.7%	95.1%	****	This measure has been deleted for 2016/17		People in Carmarthenshire are Healthier
12 EDU/003 % of pupils assessed at the end of Key Stage 2, in schools maintained by the local authority, achieving the Core Subject Indicator, as determined by Teacher Assessment	87.4%	88.7%	88.2%	☹	▲	89.4%	87.9%	***	88.7%	✓	People in Carmarthenshire fulfil their learning potential
Despite being off target the result has improved by 0.8 percentage points compared to the previous year from 87.4% to 88.2%. The performance achieved represents the Local Authority's best result to date and continues our ongoing upward trend. The School Improvement Team will continue to support and challenge all schools with regard to increased outcomes at the end of the Key Stage 2. National arrangements to support accuracy of Teacher Assessment have been implemented and will continue to support work in our schools.											
13 EDU/004 % of pupils assessed at the end of Key Stage 3, in schools maintained by the local authority, achieving the Core Subject Indicator, as determined by Teacher Assessment	84.5%	86.5%	85.1%	☹	▲	87.2%	84.3%	***	85.6%	✓	People in Carmarthenshire fulfil their learning potential
Despite the 2015/16 result being slightly off target, it shows an increase of 0.6 percentage points on last year's performance. The result is also the highest recorded by the Local Authority, continuing our upward trend since 2011 (68.4%), an increase of 16.7 percentage points. The School Improvement Team will continue to support and challenge all schools with regard to increased outcomes at the end of the Key Stage 3. National arrangements to support accuracy of Teacher Assessment have been implemented and will continue to support work in our schools.											
14 EDU/011 The average point score for pupils aged 15 at the preceding 31 August, in schools maintained by the local authority	579.8	599.0	580.3	☹	▲	568.8	514.4	****	581.0	✓	People in Carmarthenshire fulfil their learning potential
The 2015/16 result is off target but has improved, this is the best ever result for the Local Authority and is due to an increase in rigour of tracking and challenge from the Local Authority and ERW Consortium (Education through Regional Working). The School Improvement team will continue to challenge and support schools' and monitor performance throughout the academic year in order to meet pupil, school and Local Authority targets.											

Definition / Measure Reference	2014/15	2015/16							2016/17		Improvement Plan Theme
	Our Result	Target	Final Result	Target Met ☺ or ☹	Did we improve ▲ or ▼	Welsh Best Quartile	Welsh Median	How we compare in Wales * to ****	Target Set	Target Set to improve against Actual Result ✓ or ✗	
15 EDU/017 % of pupils aged 15 at the preceding 31 August, in schools maintained by the local authority who achieved the Level 2 threshold including a GCSE grade A*-C in English or Welsh first language and mathematics.	58.7%	61.1%	61.1%	☺	▲	62.3%	57.6%	***	61.6%	✓	People in Carmarthenshire fulfil their learning potential
	The 2015/16 result (2014/15 Academic Year) represents a strong improvement of over 4% from the previous year and for the first time the Authority's schools have passed through the 60% barrier. Numerous challenge, support and intervention strategies implemented by the School Improvement Team working in partnership with senior leaders in schools (including targeting specific departmental performance) have contributed greatly to this success. Two schools need to further improve their performance. Intervention from the School Improvement Team is in place and the current outlook for Academic Year 2015/16 is good.										
16 LCL/001b The number of people using Public Library Services during the year per 1,000 population	6,806	6,840	7,203	☺	▲	5,692	4,576	****	7,274	✓	People in Carmarthenshire fulfil their learning potential
	An excellent improvement during 2015/16, various improvements during the year have contributed to this such as our new website; people counters installed in Carmarthen & Ammanford Libraries which has resulted in more accurate visitor figures being collected; Crosshands & Kidwelly Libraries have re-opened and refurbishments and modernisation in a number of locations which has improved service delivery.										
17 SCC/037 The average external qualifications point score for 16 year old looked after children, in any local authority maintained learning setting	315	318	334	☺	▲	295	250	****	This measure has been deleted for 2016/17		People in Carmarthenshire fulfil their learning potential
18 EDU/002i % of All pupils (including those in local authority care) in any local authority maintained school, aged 15 as at the preceding 31 August who leave compulsory education, training or work based learning without an approved external qualification.	0.0%	0.0%	0.0%	☺	At maximum result	0.0%	0.1%	****	0.0%	At maximum result	
19 EDU/002ii % of pupils in local authority care, in any local authority maintained school, aged 15 as at the preceding 31 August who leave compulsory education, training or work based learning without an approved external qualification.	0.0%	0.0%	0.0%	☺	At maximum result	0.0%	0.0%	****	0.0%	At maximum result	People in Carmarthenshire fulfil their learning potential

Definition / Measure Reference	2014/15	2015/16							2016/17		Improvement Plan Theme
	Our Result	Target	Final Result	Target Met ☺ or ☹	Did we improve ▲ or ▼	Welsh Best Quartile	Welsh Median	How we compare in Wales * to ****	Target Set	Target Set to improve against Actual Result ✓ or ✗	
20 EDU/016a % of pupil attendance in primary schools	95.0%	95.2%	95.2%	☺	▲	95.2%	94.9%	****	95.4%	✓	People in Carmarthenshire fulfil their learning potential
	<p>There has been a slight improvement again during 2015/16 (2014/15 Academic Year) and remain 6th best result in Wales, a significant improvement from 15th two years ago.</p> <p>The Education Welfare Service has improved engagement from parents, and Head teachers are now supported with more accurate and regular data monitoring and sharing both of which have contributed to improving attendance. Continued improvements will be sought through increased support and challenge of schools.</p>										
21 EDU/016b % of pupil attendance in secondary schools	93.9%	94.2%	94.2%	☺	▲	94.3%	93.8%	***	94.4%	✓	People in Carmarthenshire fulfil their learning potential
	<p>The 2015/16 (2014/15 Academic Year) result has improved and are currently ranked 9th in Wales, a slight decline on 8th in the previous year, but continues to be a vast improvement on 20th in 2013/14.</p> <p>Based on the % of Eligible Free School Meal pupils per Local Authority, our expected ranking was 10th, which we have exceeded with this result.</p> <p>Restructuring of the Education Welfare Service has improved engagement from Headteachers coupled with more accurate and regular data monitoring and sharing which assisted in improving attendance. Continued improvements are expected through increased support and challenge of schools.</p>										
22 EDU/015a % of final statements of special educational need issued within 26 weeks including exceptions	22.9%	25.0%	34.8%	☺	▲	96.2%	78.3%	*	40.0%	✓	People in Carmarthenshire fulfil their learning potential
	<p>The number of Statements issued has reduced as expected following the devolvement of Additional Needs funding to schools, despite this the percentage issues within 26 weeks continues to be low and in the bottom quartile despite a slight improvement on last year.</p> <p>Hywel Dda Health Board continue to have problems recruiting and are running clinics ad hoc when they can employ a locum. This is leading to continued delays in receiving medical assessments.</p> <p>We have addressed concerns with senior managers in the Local Health Board and we shall continue to</p> <ol style="list-style-type: none"> 1) Track assessments to pre-empt delays where possible 2) Continue to request info on why reports are late from external agencies; 3) Inform parents when the assessment is being delayed by the Local Health Board; 4) Send reminders of the Authority's statutory obligation to external agencies; 4) Ask the Local Health Board to alert us when a child does not attend a medical so that we can offer to assist parents to make arrangements to take the child to appointments to avoid a 'Did Not Attend'. 										
23 EDU/015b % of final statements of special education need issued within 26 weeks excluding exceptions	75.0%	90.0%	80.0%	☹	▲	100.0%	100.0%	*	90.0%	✓	People in Carmarthenshire fulfil their learning potential
	<p>Our 2015/16 result does show an improvement on the previous year of 75% but continues to be in the bottom quartile. There were four assessments not issued within 26 weeks due to delay's receiving information.</p> <p>Reminders are sent routinely from the statutory process team over the 26 week period to remind the school link Educational Child Psychologist when documentation needs to be completed by, and the need to comply with statutory timescales.</p> <p>Some of delays are due to parents not being available for arranged appointments and parents being uncertain and changing their minds re special provision preferred.</p> <p>Further discussions will take place between Additional Learning Needs Process Manager & Principle Educational Child Psychologist to look at ways to improve results.</p>										

Definition / Measure Reference	2014/15	2015/16							2016/17		Improvement Plan Theme
	Our Result	Target	Final Result	Target Met ☺ or ☹	Did we improve ▲ or ▼	Welsh Best Quartile	Welsh Median	How we compare in Wales * to ****	Target Set	Target Set to improve against Actual Result ✓ or ✗	
24 EDU/006ii % of pupils assessed, in schools maintained by the local authority, receiving a Teacher Assessment in Welsh (first language) at the end of Key Stage 3	39.0%	40.0%	43.2%	☺	▲	19.4%	11.7%	****	43.7%	✓	People in Carmarthenshire fulfil their learning potential
25 SCA/019 % of adult protection referrals completed where the risk has been managed	98.98%	98.00%	92.61%	☹	▼	100.00%	98.95%	*	This measure has been deleted for 2016/17		People who live, work and visit Carmarthenshire are safe and feel safer
26 SCC/002 % of children looked after at 31 March who have experienced one or more change of school, during a period or periods of being looked after, which were not due to transitional arrangements, in the 12 months to 31 March	5.4%	10.0%	3.9%	☺	▲	9.2%	13.1%	****	5.0%	✗	People who live, work and visit Carmarthenshire are safe and feel safer
27 SCC/004 % of children looked after on 31 March who have had three or more placements during the year.	11.7%	11.3%	14.9%	☹	▼	8.6%	9.6%	*	13.5%	✓	People who live, work and visit Carmarthenshire are safe and feel safer

Definition / Measure Reference	2014/15	2015/16							2016/17		Improvement Plan Theme
	Our Result	Target	Final Result	Target Met ☺ or ☹	Did we improve ▲ or ▼	Welsh Best Quartile	Welsh Median	How we compare in Wales * to ****	Target Set	Target Set to improve against Actual Result ✓ or ✗	
28 SCC/011b % of initial assessments that were completed during the year where there is evidence that the child has been seen alone by the Social Worker	47.3%	48.3%	46.5%	☹	▼	59.7%	52.3%	*	This measure has been deleted for 2016/17		People who live, work and visit Carmarthenshire are safe and feel safer
	Assessments are allocated to the appropriate workers by senior staff and allocations are dependent on the type of assessment. For the purpose of this measure, non social work staff include social worker assistants, student social workers and health professionals in our multi disciplinary Children's Disability Team. Many children are not seen alone due to age. Several children choose not to be seen alone and refuse. Not every case will require a child to be seen alone, this is dependent on the nature of the assessment. However, we will ensure this takes place wherever possible. Some children are not seen/seen alone due to various reasons including – sole agency investigations by police, professional abuse meetings, missing persons active to other authorities										
29 SCC/025 % of statutory visits to looked after children due in the year that took place in accordance with regulations	98.5%	98.0%	98.2%	☺	▼	94.2%	86.8%	****	This measure has been deleted for 2016/17		People who live, work and visit Carmarthenshire are safe and feel safer
30 SCC/033d % of young people formerly looked after with whom the authority is in contact at the age of 19.	100.0%	95.0%	100.0%	☺	At maximum result	100.0%	96.3%	****	This measure has been deleted for 2016/17		People who live, work and visit Carmarthenshire are safe and feel safer
31 SCC/033e % of young people formerly looked after with whom the authority is in contact, who are known to be in suitable, non-emergency accommodation at the age of 19.	88.2%	89.5%	94.7%	☺	▲	100.0%	94.7%	***	This measure has been deleted for 2016/17		People who live, work and visit Carmarthenshire are safe and feel safer
32 SCC/033f % of young people formerly looked after with whom the authority is in contact, who are known to be engaged in education, training or employment at the age of 19.	64.7%	73.7%	73.7%	☺	▲	75.0%	63.0%	***	This measure has been deleted for 2016/17		People who live, work and visit Carmarthenshire are safe and feel safer
33 SCC/041a % of eligible, relevant and former relevant children that have pathway plans as required.	100.0%	100.0%	100.0%	☺	At maximum result	100.0%	100.0%	****	This measure has been deleted for 2016/17		People who live, work and visit Carmarthenshire are safe and feel safer

Definition / Measure Reference	2014/15	2015/16							2016/17		Improvement Plan Theme
	Our Result	Target	Final Result	Target Met ☺ or ☹	Did we improve ▲ or ▼	Welsh Best Quartile	Welsh Median	How we compare in Wales * to ****	Target Set	Target Set to improve against Actual Result ✓ or ✗	
34 SCC/045 % of reviews of looked after children, children on the Child Protection register and children in need carried out in line with the statutory timetable	89.4%	90.0%	89.4%	☹	▼	95.2%	92.2%	*	This measure has been deleted for 2016/17		People who live, work and visit Carmarthenshire are safe and feel safer
	Our result for 2015/16 has remained constant, however, we have moved into the bottom quartile. Completion of Children in Need reviews within timescales continues to be an issue with a decline in performance and staff sickness being a contributory factor. Looked After Children and Child Protection reviews have both improved during this year, 96.2% and 99.4% respectively. Team Managers will continue to monitor Children in Need reviews and Social Workers will ensure that all Care Assess (electronic record) review forms are entered onto the system as and when required.										
35 CAM/037 The percentage change in the average Display Energy Certificate (DEC) score within local authority public buildings over 1,000 square metres.	1.5%	1.1%	7.2%	☺	▲	5.7%	4.1%	****	1.1%	✓	Carmarthenshire's communities and environment are sustainable
36 STS/005b The percentage of highways and relevant land inspected of a high or acceptable standard of cleanliness	99.2%	92.0%	98.9%	☺	▼	98.1%	96.7%	****	92.0%	✗	Carmarthenshire's communities and environment are sustainable
	Despite the 2015/16 being well above the target it has shown a reduction in performance therefore the 2016/17 target has been set to reduce as the service has to make further significant savings.										
37 WMT/004b % of municipal wastes sent to landfill	18.11%	15.00%	5.25%	☺	▲	12.08%	14.56%	****	10.00%	✗	Carmarthenshire's communities and environment are sustainable
	The 2016/17 target reflects the fact that we are current meeting our 2019/20 statutory target and the fact that the cost of residual waste treatment in future could be prohibitive. We will endeavour to meet our statutory target, whilst remaining within budget.										
38 WMT/009b % of municipal waste collected by local authorities and prepared for reuse and/or recycled, including source segregated biowastes that are composted or treated biologically in another way	59.61%	60.00%	63.52%	☺	▲	62.18%	59.61%	****	62.00%	✗	Carmarthenshire's communities and environment are sustainable
	The significant increase in performance for the diversion of waste from landfill during 2015/16 was achieved through the introduction of a residual waste treatment process in the previous year. We currently meet our statutory 2019/20 landfill allowance targets. The overall recycling target of 62% reflects the phased waste strategy target plan for achieving the 70% statutory recycling target by 2025. We will endeavour to work towards targets set in our waste strategy, whilst remaining within budget.										
39 STS/006 The percentage of reported fly tipping incidents cleared within 5 working days	98.70%	98.63%	87.24%	☹	▼	97.88%	96.68%	*	98.63%	✓	Carmarthenshire's communities and environment are sustainable
	Difficulties have been experienced with this particular aspect of our cleansing service due to the temporary need to reallocate resources across the cleansing and refuse collection services to meet prioritised demands, particularly during the months of January to March 2016. The impact of this situation has been a delay in responding to some fly-tipping incidents within the specified timescale during this period and therefore affected the end of year result. The % cleared within 5 working days between April and December 2015 was just below our previous year's result of 98.7%.										

40

Definition / Measure Reference	2014/15	2015/16							2016/17		Improvement Plan Theme
	Our Result	Target	Final Result	Target Met ☺ or ☹	Did we improve ▲ or ▼	Welsh Best Quartile	Welsh Median	How we compare in Wales * to ****	Target Set	Target Set to improve against Actual Result ✓ or ✗	
THS/007 The percentage of adults aged 60+ who hold a concessionary travel pass	81.5%	79.0%	80.6%	☺	▼	91.7%	86.7%	**	79.0%	✗	Carmarthenshire's communities and environment are sustainable
	The 2016/17 target as been set lower than 2015/16 result as ongoing reduction of bus services offered will impact on the likely 2016/17 take up of concessionary pass.										
THS/012 The percentage of principal (A) roads, non-principal (B) roads and non-principal (C) roads that are in overall poor condition	11.9%	11.9%	10.7%	☺	▲	5.3%	7.7%	*	9.5%	✓	Carmarthenshire's communities and environment are sustainable
	The additional Local Government Borrowing Initiative (LGBI) funding over recent years can be seen to make a direct impact on improving the combined overall condition of our A, B, and C classes of road network. Whilst the combined overall figure of 10.7% shows an improvement, it is short of achieving the ultimate goal of the 2008 level of 7.1%, but significantly below the peak in 2012/13 at 17.2%, showing a reversal of the general trend i.e. a decrease in the overall proportion of the network that is classed as being in poor condition. The LGBI investment in Carmarthenshire was primarily targeted at A&B class roads, whilst recent investment specifically in the class C roads by means of County finances appears to have assisted with a recovery from 21.8% in 2012-13 to 13.7% in 2015-16, albeit that this figure is significantly higher than the desired target level of around 9.7% for the C class network. Significant financial investment will be required to make further improvement in the combined overall condition of the network, primarily targeted at the C class network.										

41

How this information shapes future plans

No single set of figures tell the whole story. The indicators presented here are intended to prompt questions, not to provide simplistic answers. Improving our understanding will help us to improve performance

The comparative results and other information will be used to inform improvement for the 2017/18 cycle:-

- Their use by Services in their evaluation and assessment of performance and shaping of 2017/18 business plans
- Informing the 2017/18 budget process
- These results will also inform the selection of our Well-being Objectives for 2017/18 and future Corporate Plan



EICH CYNGOR arleinamdani
www.sirgar.llyw.cymru

YOUR COUNCIL doitonline
www.carmarthenshire.gov.wales

YOU SAID, WE LISTENED.....

Please continue to feedback your comments....
unless you tell us....we can't do anything!