

## CYNWYL ELFED WARD: ELECTORAL DIVISION PROFILE

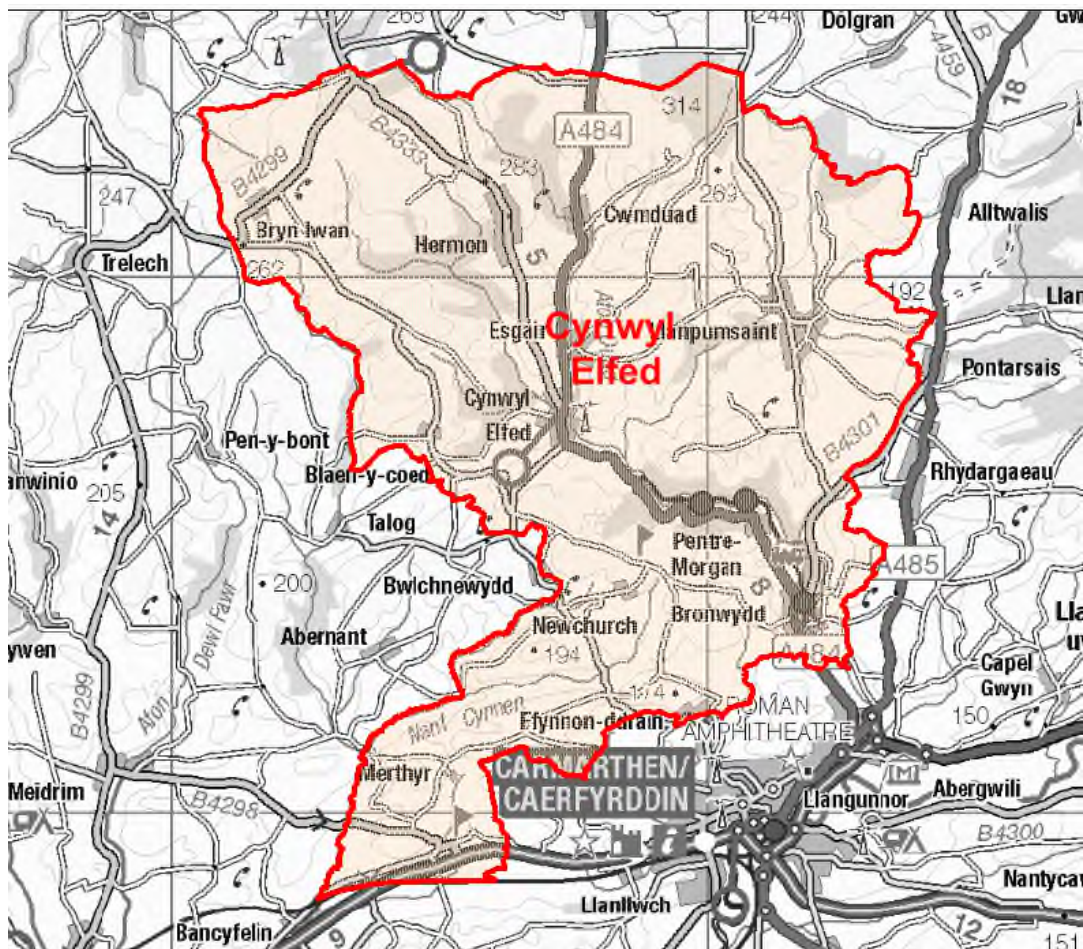
Policy Research and Information Section, Carmarthenshire County Council, January 2018

**Councillors (Electoral Vote 2017):** Henry Irfon Jones (Independent). Turnout = 56.52%,  
**Electorate (December 2017):** 2,474

**Population:** 3,051 (2016 Mid Year Population Estimates, ONS)

**Welsh Assembly and UK Parliamentary Constituency:** Carmarthenshire West & Pembrokeshire

**Council owned Facilities:** Llanpumsaint C.P. School, Cynwyl Elfed C.P. School, Cynwyl Elfed Public Toilets.



© Hawlfraint y Goron a hawliau cronfa ddata 2017 Arolwg Ordnans 100023377

© Crown copyright and database rights 2017 Ordnance Survey 100023377

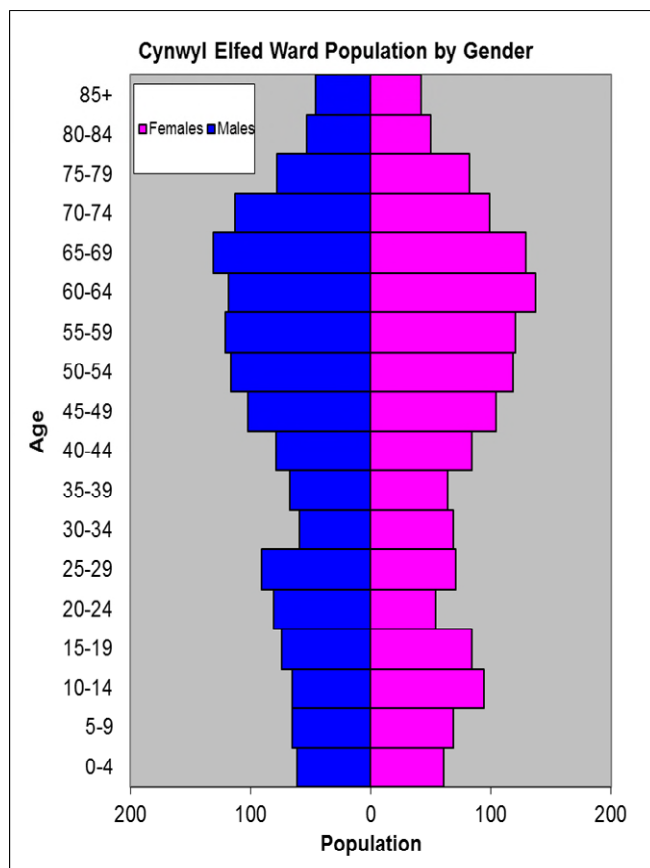
### Location: Approximately 12km from Carmarthen Town

- ⇒ Regeneration Designations: Rural Development Plan 2007-2013 eligible ward
- ⇒ Area: 119.10km<sup>2</sup>
- ⇒ Population Density: 26 people per km<sup>2</sup>
- ⇒ Population Change: 2011-2016: +33 (+1.1%)
- ⇒ Major Employers: Carmarthenshire County Council (schools and leisure)

## POPULATION STATISTICS 2016 Mid Year Population Estimates

Age Structure	Cynwyl Elfed Population	Cynwyl Elfed %	Carmarthenshire %
Aged: 0-4	122	4.0	5.3
5-14	293	9.6	11.3
15-24	293	9.6	10.8
25-44	584	19.1	21.6
45-64	936	30.7	28.0
65-74	472	15.5	12.8
75+	351	11.5	10.2
<b>Total</b>	<b>3,051</b>	<b>100</b>	<b>100</b>

Source: aggregated lower Super Output Area (LSOA) Small Area Population Estimates, 2016, Office for National Statistics (ONS)



- ⇒ 25<sup>th</sup> highest ward population in Carmarthenshire, and 9<sup>th</sup> lowest population density.
- ⇒ Highest proportion of people aged over 45, proportion aged 65-74 is over 2% higher than the Carmarthenshire average.
- ⇒ Higher proportion of people with higher level qualifications
- ⇒ Higher proportion of Welsh Speakers than the Carmarthenshire average.

## 2011 Census Data

Population: Key Facts	Cynwyl Elfed	Cynwyl Elfed %	Carmarthenshire
<b>People:</b> born in Wales	1991	66.0	76.0
born outside UK	74	2.5	4.1
in non-white ethnic groups	37.0	1.3	1.9
with limiting long-term illness	652	21.6	25.4
with no qualifications (aged 16-74)	604	23.8	26.8
with higher level qualifications (aged 16-74)	735	28.9	23.9
able to speak Welsh	1597	54.3	43.9

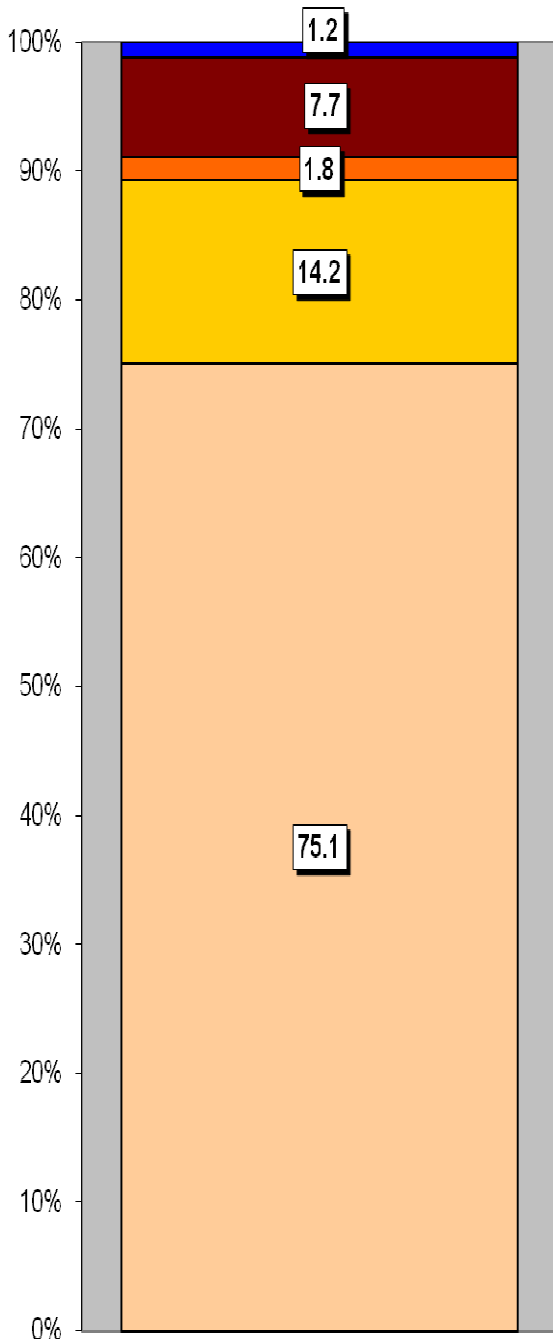
Household Composition	Cynwyl Elfed	Cynwyl Elfed %	Carmarthenshire
<b>Total Households/</b> (Average Household Size)	1215	(2.5)	(2.3)
Household Type: one person: pensioner	159	13.1	14.8
one person: other	135	11.1	15.4
one family: all pensioners	165	13.6	9.8
one family: married couple	503	41.4	34.1
one family: cohabiting couple	94	7.7	8.7
one family: lone parent	71	5.9	11.3
one family: other	88	7.2	5.9

Source: 2011 Census, ONS

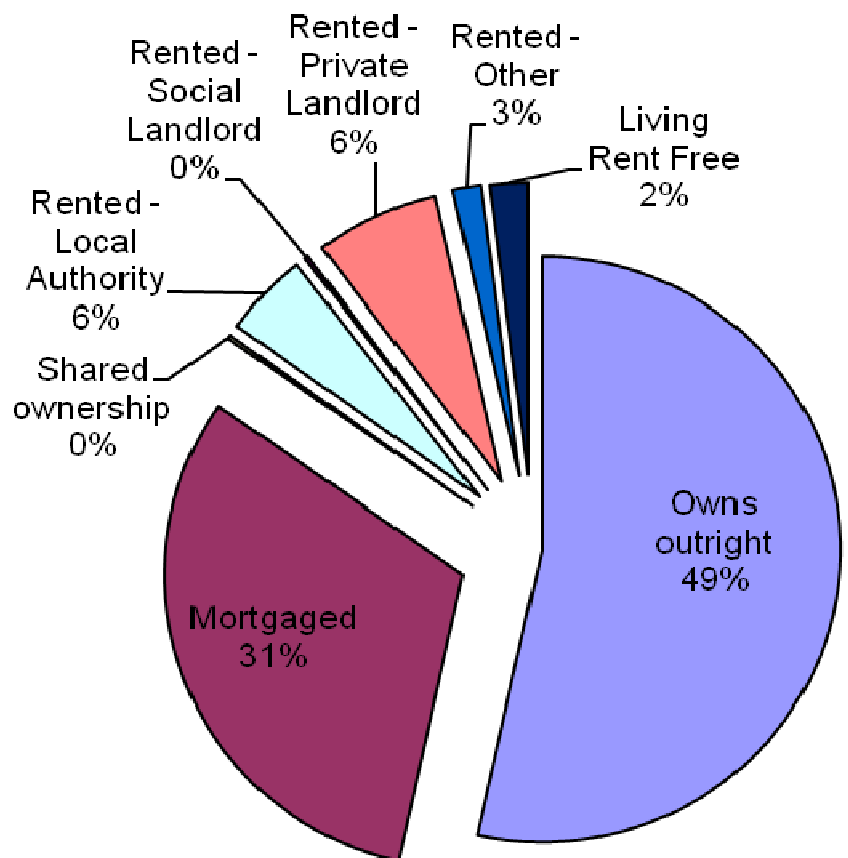
## HOUSING

The area's housing consists majority of detached housing, which makes up almost three quarters of the housing stock. The second largest proportion is the semi-detached accommodation which makes up 14% of the housing. The ward consists of 56 local authority owned properties and 3 Housing Association properties.

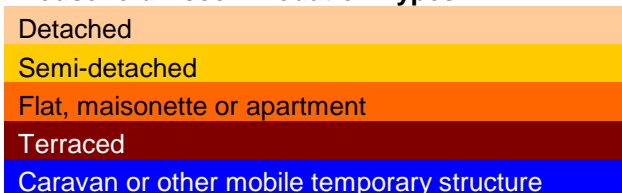
### Household Accommodation Types



Household Tenure	%
Owns outright	53.5
Mortgaged	31.2
Shared ownership	0.2
Rented - Local Authority	4.6
Rented - Social Landlord	0.2
Rented - Private Landlord	6.7
Rented - Other	1.5
Living Rent Free	2.1



### Household Accommodation Types



## SOCIO-ECONOMIC CHARACTERISTICS

- ⇒ The estimated median household income for Cynwyl Elfed, based on CACI's 2017 'PayCheck' data, is £31,107 which is the 9<sup>th</sup> highest (of 58 wards) in Carmarthenshire and 18.5% above the Carmarthenshire median of £25,365.
- ⇒ The social profile information indicates a higher than average level of people in higher/lower managerial and professional administrative occupations (Levels 1-2) and a large number of small employers and own account workers (Level 4).

Social Profile	Cynwyl Elfed	%	Carmarthenshire %
<i>All people aged 16-74 in households</i>	2264	100	100
<b>1: Higher Managerial &amp; Professional Admin. Occupations</b>	378	16.6	13.8
<b>2: Lower Managerial &amp; Professional Admin. Occupations</b>	523	23.1	19.9
<b>3: Intermediate Occupations</b>	270	11.9	11.6
<b>4: Small Employers &amp; Own Account Workers</b>	537	23.7	12.6
<b>5: Lower Supervisory &amp; Technical Occupations</b>	132	5.8	7.6
<b>6: Semi-routine Occupations</b>	279	12.3	16.7
<b>7: Routine Occupations</b>	163	7.2	13.0
<b>8: Never Worked &amp; Long Term Unemployed</b>	48	2.1	4.9

Source: 2011 Census, ONS

## ECONOMY AND LABOUR MARKET

Benefit Claimants	Cynwyl Elfed	Rate %	Carmarthenshire Working Population %
Unemployment Benefit (JSA): November 2017	7	0.4	1.0
Incapacity Benefits (ESA/IB/SDA) May 2017	70	3.9	9.1
Income Support: May 2017	10	0.6	1.6
Disability Living Allowance: May 2017	55	3.1	7.2
Pension Credit: May 2017 (Population 65+)	80	10.0	16.5
State Pension Claimants: May 2017	835	-	-

Source: Jobcentre Plus administrative system Dept. for Work & Pensions

Economic Status (people aged 16-74)	Cynwyl Elfed	Cynwyl Elfed %	Carmarthenshire %
<b>Economically Active</b>	1562	69.0	64.9
Employees: Part-time	303	13.4	13.9
Employees: Full-time	719	31.8	33.7
Self-employed	458	20.2	11.0
Unemployed	39	1.7	3.7
Full-time Student	43	1.9	2.5
<b>Economically Inactive</b>	702	31.0	35.1
Retired	442	19.5	18.1
Student	87	3.8	4.5
Looking after home/family	54	2.4	3.8
Permanently sick/disabled	79	3.5	6.8
Other	40	1.8	1.9

Source: 2011 Census, ONS

## WELSH INDEX OF MULTIPLE DEPRIVATION (WIMD)

WIMD 2014 based on fine-grained geography of lower Super Output Areas (LSOAs). The WIMD 2014 is compiled from eight domains, Income, Employment, Health, Education, Housing, Access to Services, Physical Environment and Community Safety and is published at Lower Super Output Area of which there are 112 in Carmarthenshire.

Under WIMD, where Rank 1 is the most deprived, **Cynwyl Elfed 1** ranks 64 out of 112 LSOAs in Carmarthenshire and is ranked 999 in Wales from 1909 LSOAs. **Cynwyl Elfed 2** emerges ranks 103 in Carmarthenshire and 1427 from 1909 in Wales.

The highest level of deprivation attributed to **Cynwyl Elfed 1** is the Access to Services domain, being ranked 5<sup>th</sup> in Carmarthenshire and 20<sup>th</sup> in Wales for this domain. In **Cynwyl Elfed 2** Access to Services is also the most prominent domain, ranking 16<sup>th</sup> in Carmarthenshire and 105<sup>th</sup> in Wales.

### Cynwyl Elfed 1 – Llanpumsaint Cynwyl Elfed 2 – Bronwydd

LSOA	Overall Index		Income		Employment		Health		Education		Access to Services		Community Safety		Physical Environment		Housing	
	Rank	Score	Rank	Score	Rank	Score	Rank	Score	Rank	Score	Rank	Score	Rank	Score	Rank	Score	Rank	Score
Cynwyl Elfed 1	999	64	1441	99	1456	100	1353	92	1613	107	20	5	1875	106	765	46	280	8
Cynwyl Elfed 2	1427	103	1690	109	1523	105	1612	108	1597	105	105	16	1668	87	914	58	1507	95

Source: Welsh Index of Multiple Deprivation 2014 (updated August 2016), Welsh Assembly Government.

Note: LSOAs ranked 1-112 (Carmarthenshire), 1-1909 (Wales).

## CRIME

Cynwyl Elfed	Offence Group												Annual Total
	Arson & Criminal Damage	Burglary – Business & Community	Burglary – Residential	Drug Offences	Miscellaneous Crime Against Society	Possession of Weapons	Public Order Offences	Robbery	Sexual Offences	Theft	Vehicle Offences	Violence Against the Person	
Fiscal Year (1st April to 31st March)													
2016/2017	7	2	1	3	1	0	1	0	1	1	2	10	29

Source: Dyfed Powys Police, Headquarters, Llangunnor.

**For further information please contact:**

Lesley Rees, Policy & Research Officer

01267 224462

llrees@carmarthenshire.gov.uk