

HENDY WARD: ELECTORAL DIVISION PROFILE

Policy Research and Information Section, Carmarthenshire County Council, January 2019

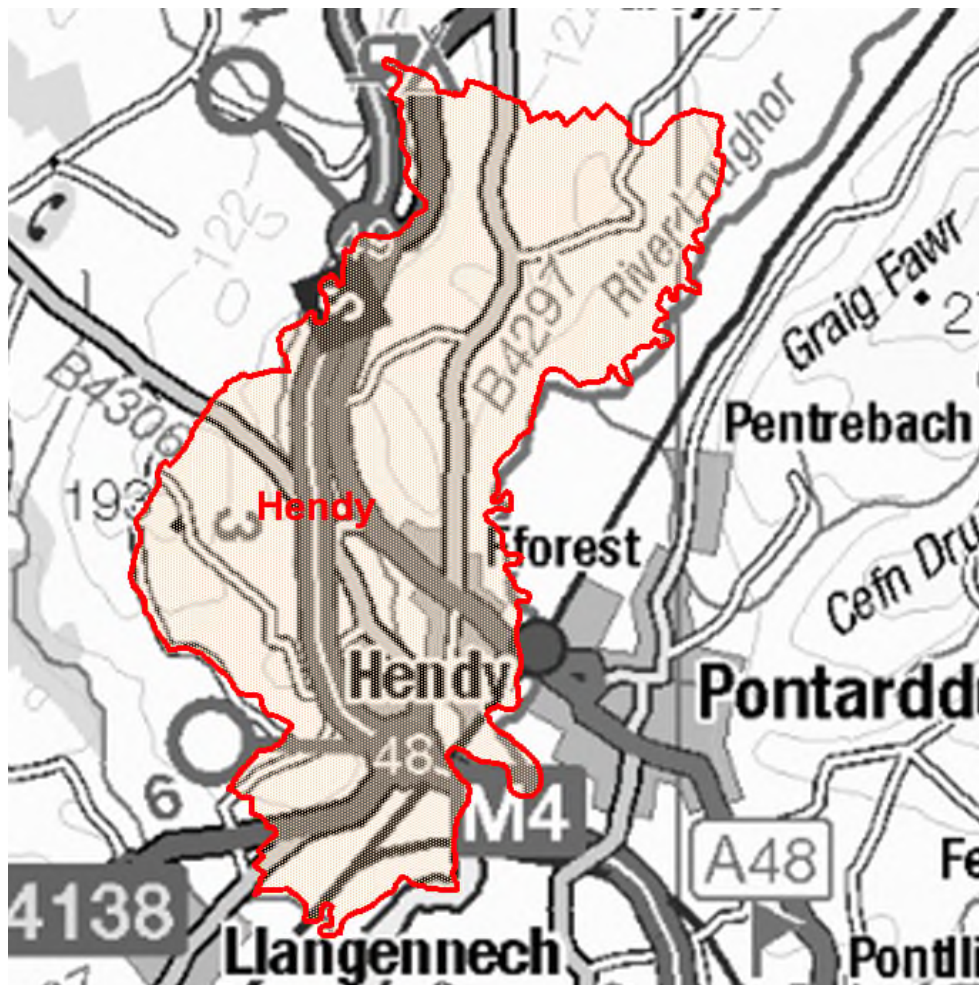
Councillors (Electoral Vote 2017): Gareth Beynon Thomas (Plaid Cymru). Turnout = 44.89%

Electorate (December 2018): 2,632

Population: 3,302 (2017 Mid Year Population Estimates, ONS)

Welsh Assembly and UK Parliamentary Constituency: Llanelli

Council owned Facilities: Llanedi C.P. School, Hendy C.P. School, Hendy Green, Hendy Library (closed), Hendy Park, Llanedi Village Green, Hendy Rugby Football Ground.



© Hawlfraint y Goron a hawliau cronfa ddata 2017 Arolwg Ordnans 100023377

© Crown copyright and database rights 2017 Ordnance Survey 100023377

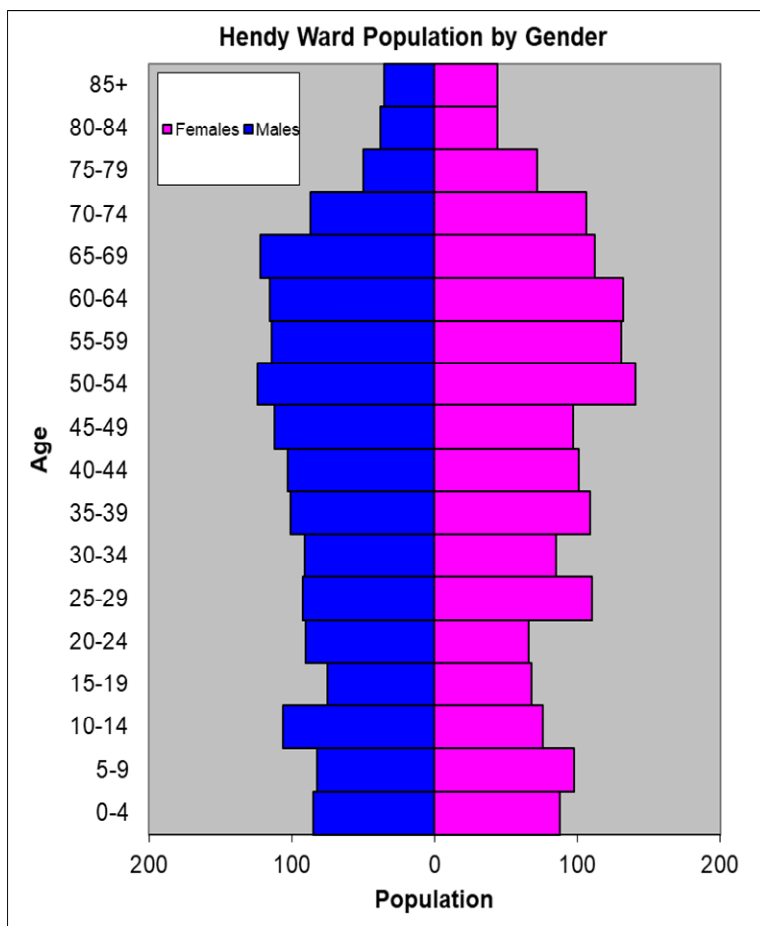
Location: Approximately 29km from Carmarthen Town

- ⇒ Area: 15.12km²
- ⇒ Population Density: 218 people per km²
- ⇒ Population Change: 2011-2017: +76 (+2.4%)
- ⇒ Major Employers: Carmarthenshire County Council (schools and leisure)

POPULATION STATISTICS 2017 Mid Year Population Estimates

Age Structure	Hendy Population	Hendy %	Carmarthenshire %
Aged: 0-4	173	5.2	5.2
5-14	362	11.0	11.4
15-24	299	9.1	10.5
25-44	792	24.0	21.6
45-64	966	29.3	28.0
65-74	427	12.9	13.0
75+	283	8.6	10.3
Total	3,302	100	100

Source: aggregated lower Super Output Area (LSOA) Small Area Population Estimates, 2017, Office for National Statistics (ONS)



- ⇒ 22nd highest ward population in Carmarthenshire, and 23rd highest population density.
- ⇒ Highest proportion of people aged over 45, proportion aged 15-24 lower than the Carmarthenshire average.
- ⇒ Higher proportion of people with higher level qualifications
- ⇒ Proportion of Welsh Speakers slightly lower than the Camarthenshire average.

2011 Census Data

Population: Key Facts	Hendy	Hendy %	Carmarthenshire
People: born in Wales	2739	84.9	76.0
born outside UK	94	2.9	4.1
in non-white ethnic groups	37	1.3	1.9
with limiting long-term illness	710	22.0	25.4
with no qualifications (aged 16-74)	560	21.1	26.8
with higher level qualifications (aged 16-74)	840	31.7	23.9
able to speak Welsh	1362	43.8	43.9

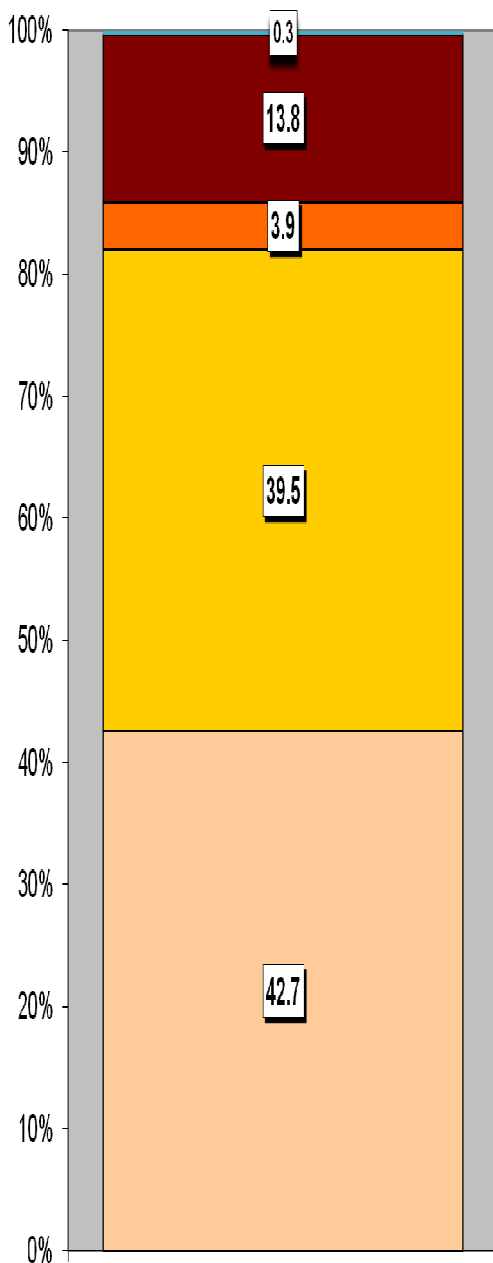
Household Composition	Hendy	Hendy %	Carmarthenshire
Total Households/ (Average Household Size)	1370	(2.3)	(2.3)
Household Type: one person: pensioner	173	12.6	14.8
one person: other	203	14.8	15.4
one family: all pensioners	115	8.4	9.8
one family: married couple	559	40.8	34.1
one family: cohabiting couple	124	9.1	8.7
one family: lone parent	121	8.8	11.3
one family: other	75	5.5	5.9

Source: 2011 Census, ONS

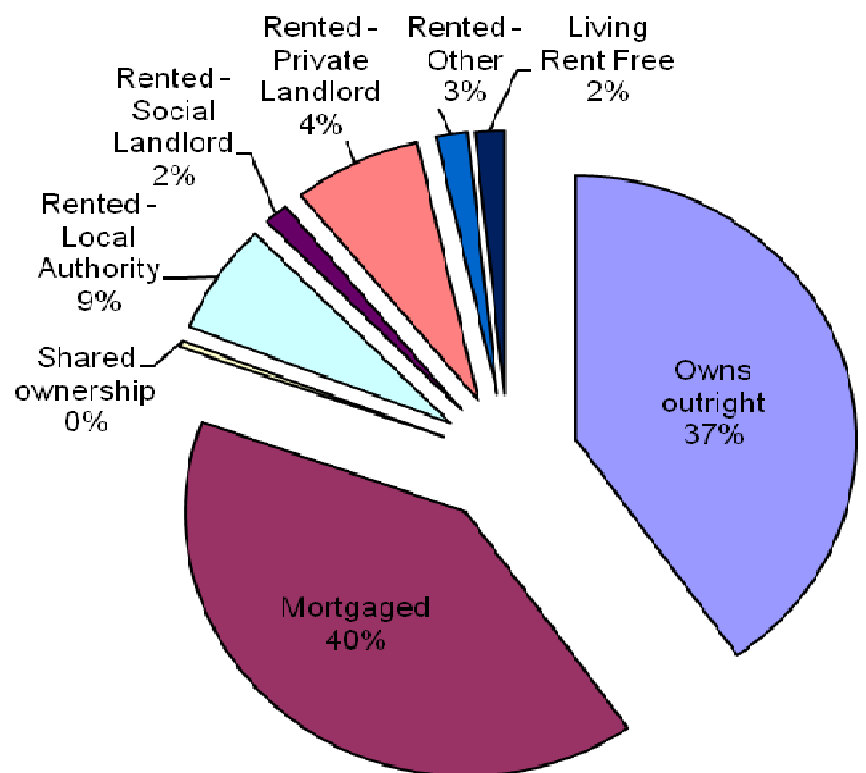
HOUSING

The area's housing consists mainly of detached and semi-detached accommodation, which are almost equal in their proportions. Cumulatively they equal almost 81% of the housing stock. The smallest proportion is attributed to the flat, maisonette or apartment category. The ward consists of 93 local authority owned properties and 19 Housing Association properties.

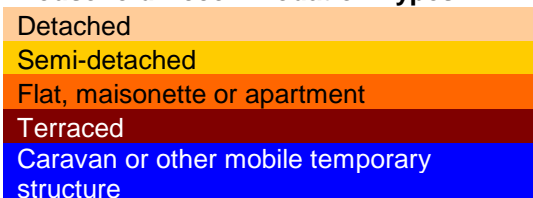
Household Accommodation Types



Household Tenure	%
Owns outright	40.3
Mortgaged	40.4
Shared ownership	0.4
Rented - Local Authority	6.8
Rented - Social Landlord	1.4
Rented - Private Landlord	7.4
Rented - Other	1.8
Living Rent Free	1.7



Household Accommodation Types



SOCIO-ECONOMIC CHARACTERISTICS

- ⇒ The estimated median household income for Hendy, based on CACI's 2018 'PayCheck' data, is £30,656 which is the 9th highest (of 58 wards) in Carmarthenshire and 16.9% above the Carmarthenshire median of £25,488.
- ⇒ The social profile information indicates a higher than average level of people employed in higher and lower managerial professional administrative occupations (Levels 1-2).

Social Profile	Hendy	%	Carmarthenshire %
<i>All people aged 16-74 in households</i>	2403	100	100
1: Higher Managerial & Professional Admin. Occupations	488	20.4	13.8
2: Lower Managerial & Professional Admin. Occupations	620	25.8	19.9
3: Intermediate Occupations	313	13.0	11.6
4: Small Employers & Own Account Workers	234	9.7	12.6
5: Lower Supervisory & Technical Occupations	186	7.7	7.6
6: Semi-routine Occupations	333	13.9	16.7
7: Routine Occupations	255	10.6	13.0
8: Never Worked & Long Term Unemployed	86	3.6	4.9

Source: 2011 Census, ONS

ECONOMY AND LABOUR MARKET

Benefit Claimants	Hendy	Rate %	Carmarthenshire Working Population %
Unemployment Benefit (JSA): November 2018	#	#	1.4
Incapacity Benefits (ESA/IB/SDA) May 2018	120	5.9	9.0
Income Support: May 2018	15	0.7	1.5
Disability Living Allowance: May 2018	95	4.7	6.2
Pension Credit: May 2018 (Population 65+)	90	13.2	15.3
State Pension Claimants: May 2018	685	-	-

Source: Jobcentre Plus administrative system Dept. for Work & Pensions

These figures are suppressed as value is 1 or 2.

Economic Status (people aged 16-74)	Hendy	Hendy %	Carmarthenshire %
Economically Active	1681	69.9	64.9
Employees: Part-time	336	14.0	13.9
Employees: Full-time	996	41.4	33.7
Self-employed	236	9.8	11.0
Unemployed	52	2.2	3.7
Full-time Student	61	2.5	2.5
Economically Inactive	722	30.1	35.1
Retired	420	17.5	18.1
Student	75	3.1	4.5
Looking after home/family	60	2.5	3.8
Permanently sick/disabled	124	5.2	6.8
Other	43	1.8	1.9

Source: 2011 Census, ONS

WELSH INDEX OF MULTIPLE DEPRIVATION (WIMD)

WIMD 2014 based on fine-grained geography of lower Super Output Areas (LSOAs). The WIMD 2014 is compiled from eight domains, Income, Employment, Health, Education, Housing, Access to Services, Physical Environment and Community Safety and is published at Lower Super Output Area of which there are 112 in Carmarthenshire.

Under WIMD, where Rank 1 is the most deprived, **Hendy 1** ranks 112 out of 112 LSOAs in Carmarthenshire (the least deprived LSOA in Carmarthenshire) and is ranked 1777 in Wales from 1909 LSOAs. **Hendy 2** ranks 70 in Carmarthenshire and is ranked 1069 from 1909 LSOAs in Wales.

The highest level of deprivation attributed to **Hendy 1** is the Access to Services domain, being ranked 89th in Carmarthenshire and 1135th in Wales for this domain. In **Hendy 2** the Income domain is the most prominent ranking 43 in Carmarthenshire and 883 in Wales.

Hendy 1 – Fforest Hendy 2 – Hendy

LSOA	Overall Index		Income		Employment		Health		Education		Access to Services		Community Safety		Physical Environment		Housing	
	Rank	Wales	Rank	Wales	Rank	Wales	Rank	Wales	Rank	Wales	Rank	Wales	Rank	Wales	Rank	Wales	Rank	Wales
Hendy 1	1777	112	1633	107	1548	106	1730	110	1565	103	1135	89	1723	93	1625	102	1475	91
Hendy 2	1069	70	883	43	957	61	740	43	1017	57	1401	96	1275	53	783	48	1160	64

Source: Welsh Index of Multiple Deprivation 2014 (updated August 2016), Welsh Assembly Government.

Note: LSOAs ranked 1-112 (Carmarthenshire), 1-1909 (Wales).

CRIME

Hendy	Offence Group												Annual Total	
	Arson & Criminal Damage	Burglary – Business & Community	Burglary – Residential	Drug Offences	Miscellaneous Crime Against Society	Possession of Weapons	Public Order Offences	Robbery	Sexual Offences	Theft	Vehicle Offences	Violence Against the Person		
Fiscal Year (1st April to 31st March)														
2017/2018	31	4	1	9	0	0	3	0	3	12	6	23	92	

Source: Dyfed Powys Police, Headquarters, Llangunnor.

For further information please contact:

Lesley Rees, Policy & Research Officer

01267 224462

llrees@carmarthenshire.gov.uk