

## HENGOED WARD: ELECTORAL DIVISION PROFILE

Policy Research and Information Section, Carmarthenshire County Council, January 2018

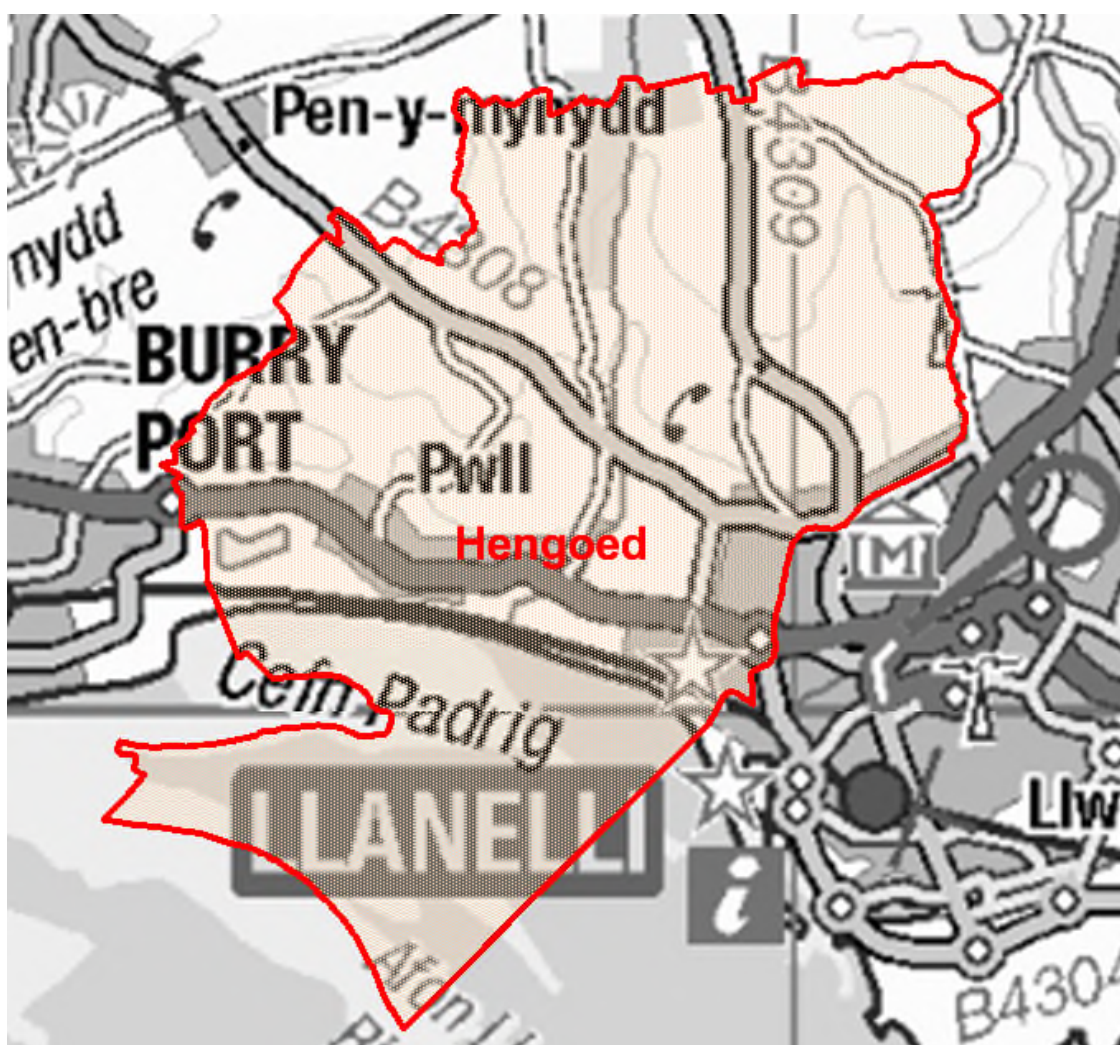
**Councillors (Electoral Vote 2017 - Turnout = 41.55%):** Penny Edwards (Labour) and Jennifer Phillips (Plaid Cymru).

**Electorate (December 2017):** 3,141

**Population:** 3,846 (2016 Mid Year Population Estimates, ONS)

**Welsh Assembly and UK Parliamentary Constituency:** Llanelli

**Council owned Facilities:** Furnace Community School, Pwll C.P. School, Ysgol Gyfun Y Strade, Pwll Community Centre, Trebeddrod Reservoir, Pwll Park, Sandy Water Park (Phase 3), Sandy Water Park (East), Eisteddfod Fields & Southern Greenway, Stradey Hill Woodland, Cilymaenllwyd Woodland, Tŷ Cariad Day Centre.



© Hawlfraint y Goron a hawliau cronfa ddata 2017 Arolwg Ordnans 100023377

© Crown copyright and database rights 2017 Ordnance Survey 100023377

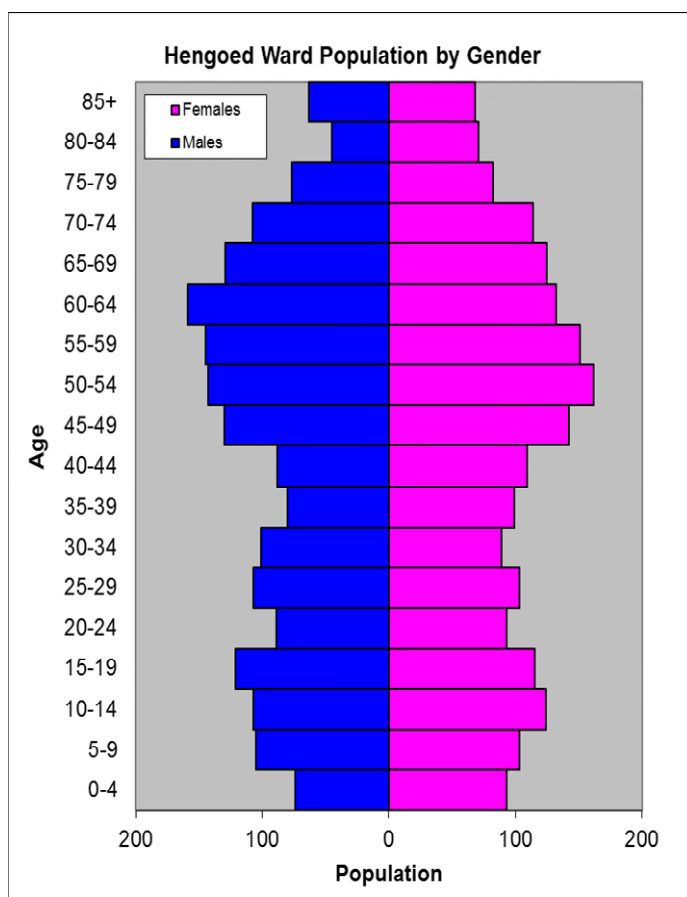
**Location: Approximately 27km from Carmarthen Town**

- ⇒ Area: 19.09km<sup>2</sup>
- ⇒ Population Density: 201 people per km<sup>2</sup>
- ⇒ Population Change: 2011-2016: +101 (+2.7%)
- ⇒ Major Employers: Carmarthenshire County Council (schools and leisure)

## POPULATION STATISTICS 2016 Mid Year Population Estimates

Age Structure	Hengoed Population	Hengoed %	Carmarthenshire %
Aged: 0-4	167	4.3	5.3
5-14	439	11.4	11.3
15-24	418	10.9	10.8
25-44	776	20.2	21.6
45-64	1164	30.3	28.0
65-74	476	12.4	12.8
75+	406	10.6	10.2
<b>Total</b>	<b>3,846</b>	<b>100</b>	<b>100</b>

Source: aggregated lower Super Output Area (LSOA) Small Area Population Estimates, 2016, Office for National Statistics (ONS)



- ⇒ 16<sup>th</sup> highest ward population in Carmarthenshire, and 26<sup>th</sup> highest population density
- ⇒ Highest proportion of people aged over 45
- ⇒ Higher proportion of people with higher level qualifications
- ⇒ Lower proportion of Welsh Speakers than the Carmarthenshire average

## 2011 Census Data

Population: Key Facts	Hengoed	Hengoed %	Carmarthenshire
<b>People:</b> born in Wales	3119	83.3	76.0
born outside UK	147	3.9	4.1
in non-white ethnic groups	71	1.9	1.9
with limiting long-term illness	970	25.9	25.4
with no qualifications (aged 16-74)	719	23.3	26.8
with higher level qualifications (aged 16-74)	814	26.4	23.9
able to speak Welsh	1189	32.7	43.9

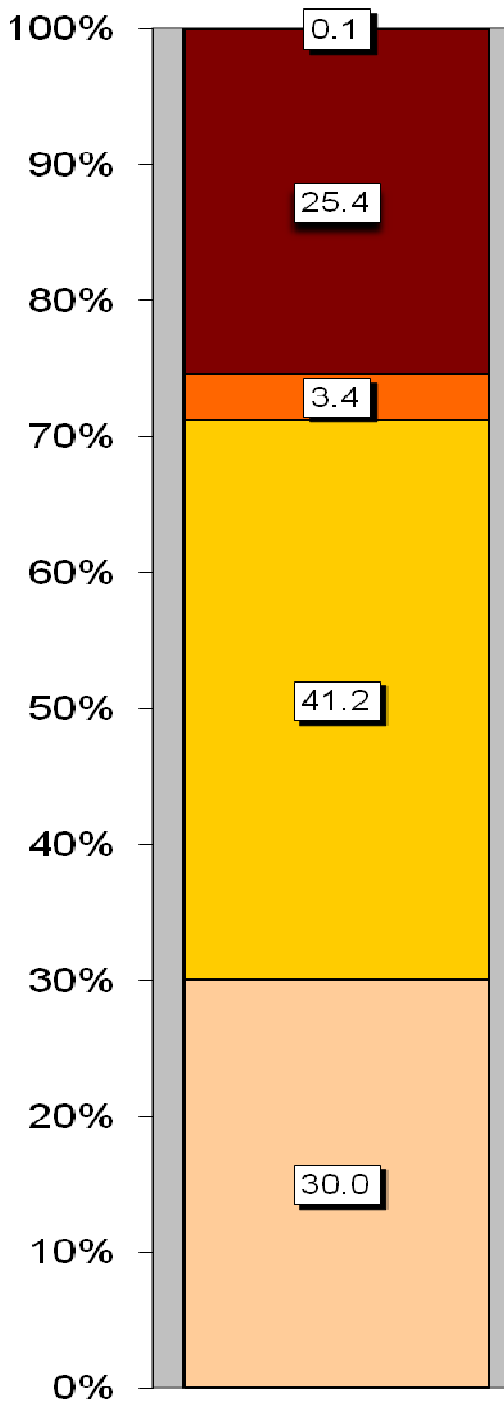
Household Composition	Hengoed	Hengoed %	Carmarthenshire
<b>Total Households/</b> (Average Household Size)	1605	(2.3)	(2.3)
Household Type: one person: pensioner	223	13.9	14.8
one person: other	221	13.8	15.4
one family: all pensioners	192	12.0	9.8
one family: married couple	564	35.1	34.1
one family: cohabiting couple	132	8.2	8.7
one family: lone parent	194	12.0	11.3
one family: other	79	4.9	5.9

Source: 2011 Census, ONS

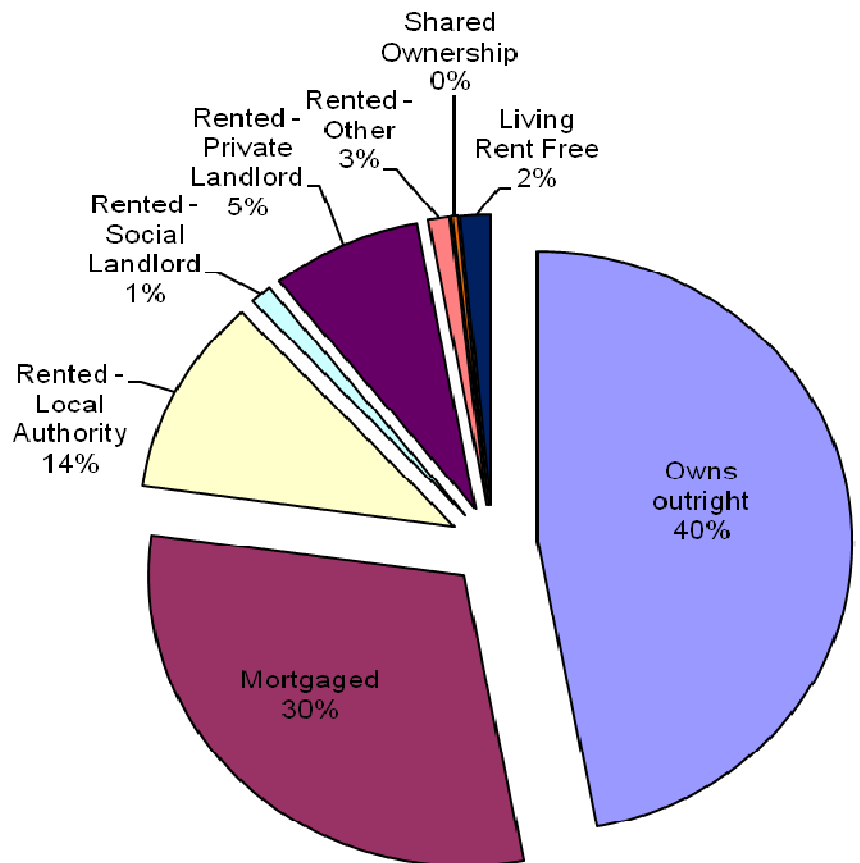
## HOUSING

The area's housing consists mostly of semi-detached houses and a higher proportion of detached accommodation in comparison to the number of terraced. Caravan or other mobile temporary structure make up the smallest proportion of the accommodation. The ward consists of 176 local authority owned properties and 17 Housing Association properties.

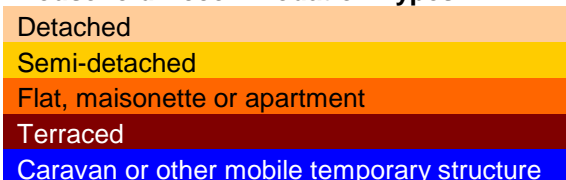
### Household Accommodation Types



Household Tenure	%
Owns outright	47
Mortgaged	30.3
Rented - Local Authority	11
Rented - Social Landlord	1.1
Rented - Private Landlord	7.7
Rented - Other	1.1
Shared Ownership	0.3
Living Rent Free	1.6



### Household Accommodation Types



## SOCIO-ECONOMIC CHARACTERISTICS

- ⇒ The estimated median household income for Hengoed, based on CACI's 2017 'PayCheck' data, is £26,318 which is the 28<sup>th</sup> lowest (of 58 wards) in Carmarthenshire and 3.6% higher than the Carmarthenshire median of £25,365.
- ⇒ The social profile information indicates a higher than average level of people classed as being in higher and lower managerial and professional administrative occupations (Levels 1-2). The number of people that have never worked and long term unemployed (Level 8) matches the average for Carmarthenshire.

Social Profile	Hengoed	%	Carmarthenshire %
<i>All people aged 16-74 in households</i>	2674	100	100
<b>1: Higher Managerial &amp; Professional Admin. Occupations</b>	432	16.2	13.8
<b>2: Lower Managerial &amp; Professional Admin. Occupations</b>	601	22.5	19.9
<b>3: Intermediate Occupations</b>	331	12.4	11.6
<b>4: Small Employers &amp; Own Account Workers</b>	246	9.2	12.6
<b>5: Lower Supervisory &amp; Technical Occupations</b>	194	7.3	7.6
<b>6: Semi-routine Occupations</b>	478	17.9	16.7
<b>7: Routine Occupations</b>	306	11.4	13.0
<b>8: Never Worked &amp; Long Term Unemployed</b>	131	4.9	4.9

Source: 2011 Census, ONS

## ECONOMY AND LABOUR MARKET

Benefit Claimants	Hengoed	Rate %	Carmarthenshire Working Population %
Unemployment Benefit (JSA): November 2017	23	1.0	1.0
Incapacity Benefits (ESA/IB/SDA) May 2017	200	8.8	9.1
Income Support: May 2017	30	1.3	1.6
Disability Living Allowance: May 2017	165	7.3	7.2
Pension Credit: May 2017 (Population 65+)	125	14.1	16.5
State Pension Claimants: May 2017	915	-	-

Source: Jobcentre Plus administrative system Dept. for Work & Pensions

Economic Status (people aged 16-74)	Hengoed	Hengoed %	Carmarthenshire %
<b>Economically Active</b>	1700	63.6	64.9
Employees: Part-time	370	13.8	13.9
Employees: Full-time	940	35.2	33.7
Self-employed	224	8.4	11.0
Unemployed	102	3.8	3.7
Full-time Student	64	2.4	2.5
<b>Economically Inactive</b>	974	36.4	35.1
Retired	549	20.5	18.1
Student	115	4.3	4.5
Looking after home/family	85	3.2	3.8
Permanently sick/disabled	167	6.2	6.8
Other	58	2.2	1.9

Source: 2011 Census, ONS

## WELSH INDEX OF MULTIPLE DEPRIVATION (WIMD)

WIMD 2014 based on fine-grained geography of lower Super Output Areas (LSOAs). The WIMD 2014 is compiled from eight domains, Income, Employment, Health, Education, Housing, Access to Services, Physical Environment and Community Safety and is published at Lower Super Output Area of which there are 112 in Carmarthenshire.

Under WIMD, where Rank 1 is the most deprived, **Hengoed 1** ranks 77 in Carmarthenshire from 112 LSOAs and is ranked 1098 in Wales from 1909 LSOAs. **Hengoed 2** ranks 55 in Carmarthenshire and 902 in Wales.

The highest level of deprivation attributed to **Hengoed 1** is the Physical Environment domain, being ranked 13<sup>th</sup> in Carmarthenshire and 244<sup>th</sup> in Wales for this domain. In **Hengoed 2** the Physical Environment domain is the most prominent ranking 26<sup>th</sup> in Carmarthenshire and 446<sup>th</sup> in Wales.

**Hengoed 1 – Furnace, Sandy Pentrepoeth. Hengoed 2 – Pwll, Stradey Woods, Sandy Water Park.**

LSOA	Overall Index		Income		Employment		Health		Education		Access to Services		Community Safety		Physical Environment		Housing	
	Rank	Score	Rank	Score	Rank	Score	Rank	Score	Rank	Score	Rank	Score	Rank	Score	Rank	Score	Rank	Score
Hengoed 1	1098	77	1182	77	705	38	1083	78	1144	71	1226	91	1308	56	244	13	1696	107
Hengoed 2	902	55	899	47	897	53	784	45	1048	60	411	46	1351	60	446	26	1659	105

Source: Welsh Index of Multiple Deprivation 2014 (updated August 2016), Welsh Assembly Government.

Note: LSOAs ranked 1-112 (Carmarthenshire), 1-1909 (Wales).

## CRIME

Fiscal Year (1st April to 31st March)	Offence Group												Annual Total
	Arson & Criminal Damage	Burglary – Business & Community	Burglary – Residential	Drug Offences	Miscellaneous Crime Against Society	Possession of Weapons	Public Order Offences	Robbery	Sexual Offences	Theft	Vehicle Offences	Violence Against the Person	
<b>2016/2017</b>	46	11	8	12	4	1	3	0	7	21	14	51	<b>178</b>

Source: Dyfed Powys Police, Headquarters, Llangunnor.

**For further information please contact:**

Lesley Rees, Policy & Research Officer

01267 224462

llrees@carmarthenshire.gov.uk