

## LLANDEILO WARD: ELECTORAL DIVISION PROFILE

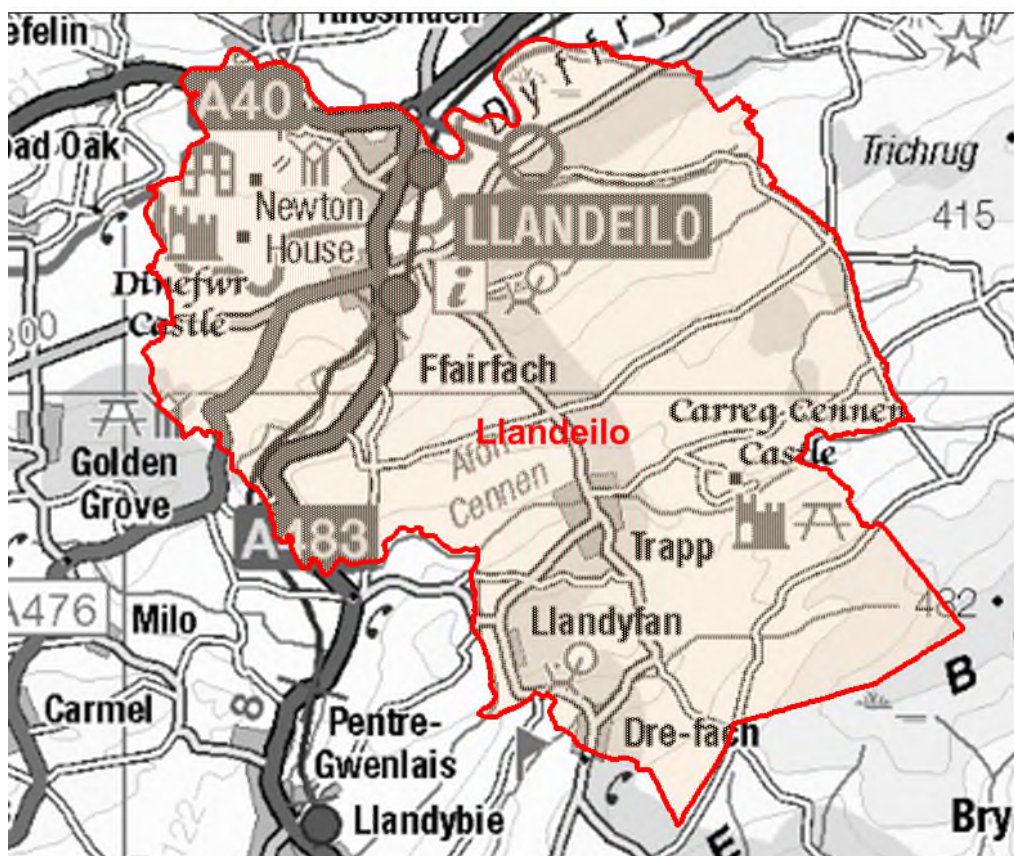
Policy Research and Information Section, Carmarthenshire County Council, January 2019

**Councillors (Electoral Vote 2017):** Edward Gwynne Thomas (Independent). Turnout = 60.48%  
**Electorate (December 2018):** 2,281

**Population:** 3,014 (2017 Mid Year Population Estimates, ONS)

**Welsh Assembly and UK Parliamentary Constituency:** Carmarthenshire East & Dinefwr

**Council owned Facilities:** Llandeilo Livestock Market, Municipal Offices Llandeilo, Llandeilo Civic Hall, Awel Tywi Care Home, Ffairfach C.P. School, Ysgol Teilo Sant, Llandeilo C.P. School, Bro Dinefwr (Llandeilo) Ysgol Bro Dinefwr (Ffairfach), Llandeilo Community Centre, Llandeilo Market Hall, Llandeilo Library, Parc le Conquet, Penlan Park, Carreg Cennen Public Toilets, Carmarthen Street Car Park, Ffairfach Playing Fields.



© Hawlfraint y Goron a hawliau cronfa ddata 2017 Arolwg Ordnans 100023377  
© Crown copyright and database rights 2017 Ordnance Survey 100023377

### Location: Approximately 24km from Carmarthen Town

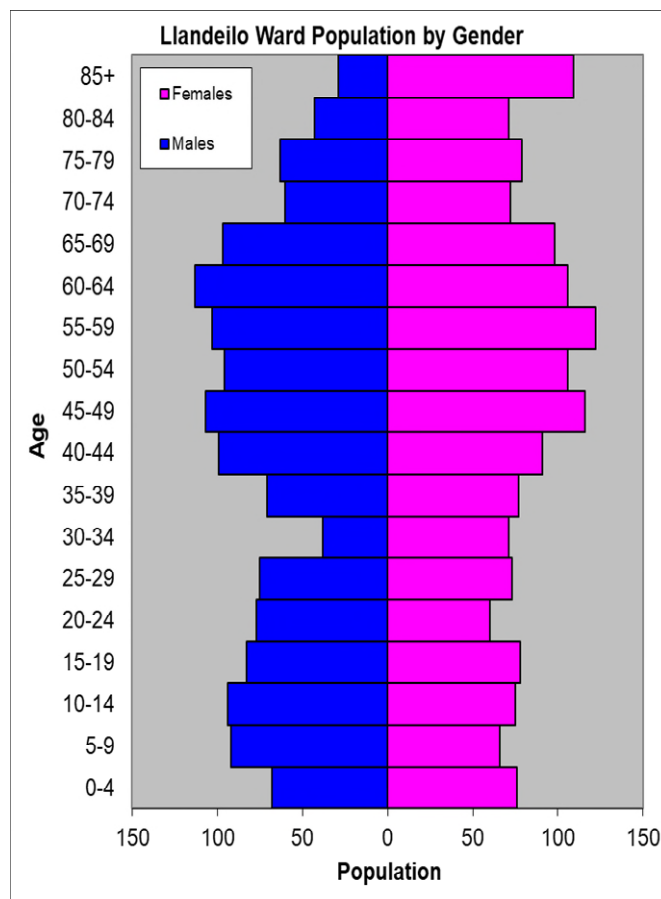
- ⇒ Regeneration Designations: Rural Development Plan 2007-2013 eligible ward
- ⇒ Area: 47.49km<sup>2</sup>
- ⇒ Population Density: 63 people per km<sup>2</sup>
- ⇒ Population Change: 2011-2017: +43 (+1.4%)
- ⇒ Major Employers: Carmarthenshire County Council (schools and leisure)

## POPULATION STATISTICS

### 2017 Mid Year Population Estimates

Age Structure	Llandeilo Population	Llandeilo %	Carmarthenshire %
Aged: 0-4	109	3.6	5.2
5-14	350	11.6	11.4
15-24	270	9.0	10.5
25-44	565	18.7	21.6
45-64	902	29.9	28.0
65-74	419	13.9	13.0
75+	399	13.2	10.3
<b>Total</b>	<b>3,014</b>	<b>100</b>	<b>100</b>

Source: aggregated lower Super Output Area (LSOA) Small Area Population Estimates, 2017, Office for National Statistics (ONS)



- ⇒ 25<sup>th</sup> highest ward population in Carmarthenshire, and 20<sup>th</sup> lowest population density.
- ⇒ Highest proportion of people aged over 45, proportion aged over 75 higher than the Carmarthenshire Average.
- ⇒ Higher proportion of people with higher level qualifications
- ⇒ High proportion of Welsh Speakers

## 2011 Census Data

Population: Key Facts	Llandeilo	Llandeilo %	Carmarthenshire
<b>People:</b> born in Wales	2130	71.7	76.0
born outside UK	89	3.0	4.1
in non-white ethnic groups	39	1.2	1.9
with limiting long-term illness	731	24.6	25.4
with no qualifications (aged 16-74)	577	23.4	26.8
with higher level qualifications (aged 16-74)	796	32.3	23.9
able to speak Welsh	1454	50.3	43.9

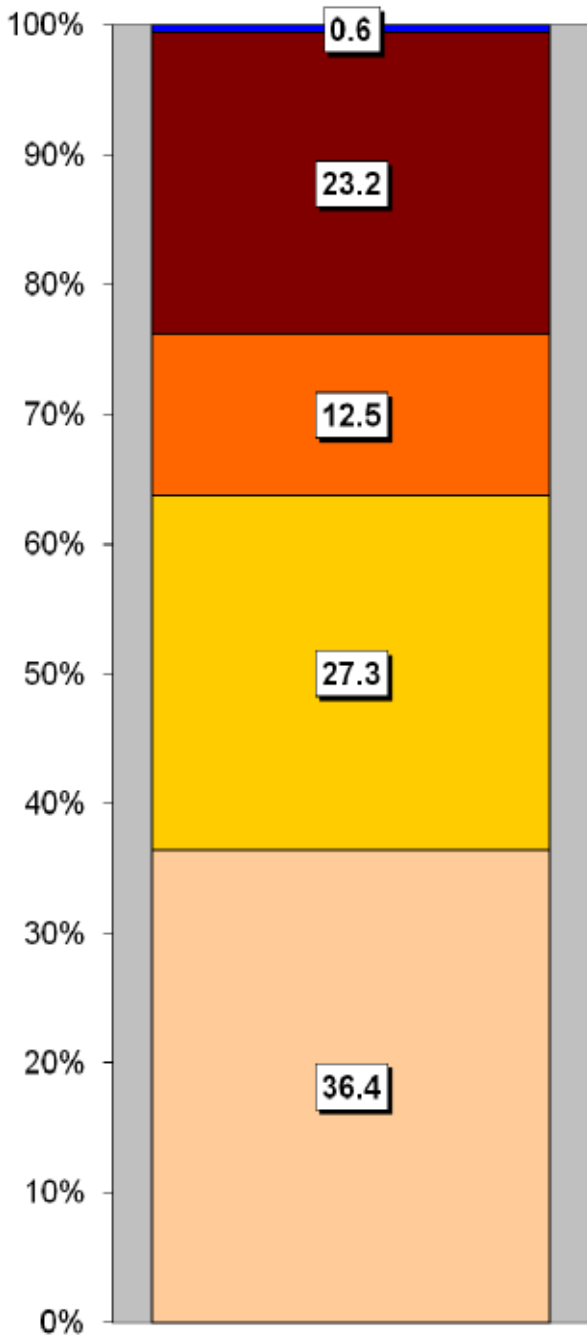
Household Composition	Llandeilo	Llandeilo %	Carmarthenshire
<b>Total Households/</b> (Average Household Size)	1386	(2.1)	(2.3)
Household Type: one person: pensioner	261	18.8	14.8
one person: other	282	20.3	15.4
one family: all pensioners	128	9.2	9.8
one family: married couple	385	27.8	34.1
one family: cohabiting couple	93	6.7	8.7
one family: lone parent	165	11.9	11.3
one family: other	72	5.2	5.9

Source: 2011 Census, ONS

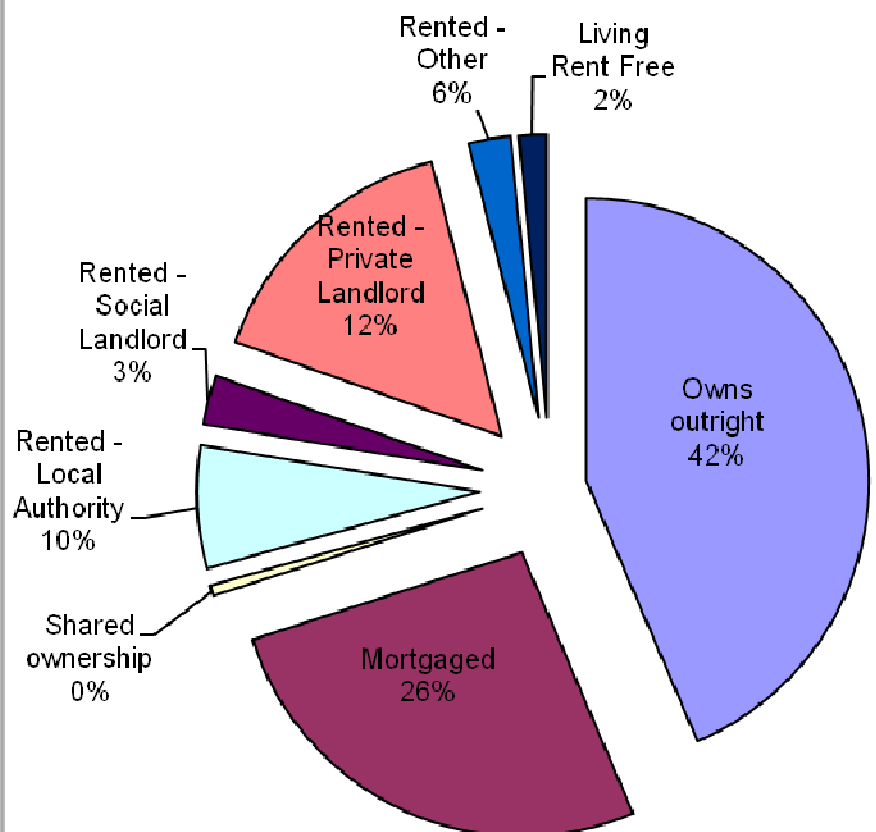
## HOUSING

The area mostly contains three types of housing, detached, semi-detached and terraced, with detached being the largest proportion. Caravan or other mobile temporary structure is the smallest in proportion. The ward consists of 97 local authority owned properties and 39 Housing Association properties.

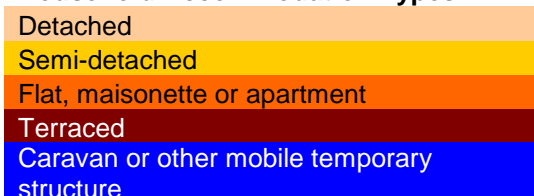
### Household Accommodation Types



Household Tenure	%
Owns outright	43.6
Mortgaged	26.5
Shared ownership	0.6
Rented - Local Authority	7.0
Rented - Social Landlord	2.8
Rented - Private Landlord	15.6
Rented - Other	2.4
Living Rent Free	1.6



### Household Accommodation Types



## SOCIO-ECONOMIC CHARACTERISTICS

- ⇒ The estimated median household income for Llandeilo, based on CACI's 2018 'PayCheck' data, is £27,186 which is the 26<sup>th</sup> highest (of 58 wards) in Carmarthenshire and 6.2% above the Carmarthenshire median of £25,488.
- ⇒ The social profile information indicates a higher than average level of people in higher managerial and professional administrative occupations (Levels 1-2), over 7% higher than the Carmarthenshire average and over 3% higher than the Carmarthenshire average of small employers and own account workers (Level 4).

Social Profile	Llandeilo	%	Carmarthenshire %
<i>All people aged 16-74 in households</i>	2057	100	100
<b>1:</b> Higher Managerial & Professional Admin. Occupations	434	21.1	13.8
<b>2:</b> Lower Managerial & Professional Admin. Occupations	464	22.6	19.9
<b>3:</b> Intermediate Occupations	217	10.5	11.6
<b>4:</b> Small Employers & Own Account Workers	329	16.0	12.6
<b>5:</b> Lower Supervisory & Technical Occupations	116	5.6	7.6
<b>6:</b> Semi-routine Occupations	287	14.0	16.7
<b>7:</b> Routine Occupations	224	10.9	13.0
<b>8:</b> Never Worked & Long Term Unemployed	77	3.7	4.9

Source: 2011 Census, ONS

## ECONOMY AND LABOUR MARKET

Benefit Claimants	Llandeilo	Rate %	Carmarthenshire Working Population %
Unemployment Benefit (JSA): November 2018	21	1.2	1.4
Incapacity Benefits (ESA/IB/SDA) May 2018	110	6.7	9.0
Income Support: May 2018	15	0.9	1.5
Disability Living Allowance: May 2018	80	4.8	6.2
Pension Credit: May 2018 (Population 65+)	110	13.8	15.3
State Pension Claimants: May 2018	780	-	-

Source: Jobcentre Plus administrative system Dept. for Work & Pensions

Economic Status (people aged 16-74)	Llandeilo	Llandeilo %	Carmarthenshire %
<b>Economically Active</b>	1385	67.3	64.9
Employees: Part-time	273	13.3	13.9
Employees: Full-time	677	32.9	33.7
Self-employed	330	16.0	11.0
Unemployed	77	3.7	3.7
Full-time Student	28	1.4	2.5
<b>Economically Inactive</b>	672	32.7	35.1
Retired	344	16.7	18.1
Student	98	4.8	4.5
Looking after home/family	71	3.5	3.8
Permanently sick/disabled	120	5.8	6.8
Other	39	1.9	1.9

Source: 2011 Census, ONS

## WELSH INDEX OF MULTIPLE DEPRIVATION (WIMD)

WIMD 2014 based on fine-grained geography of lower Super Output Areas (LSOAs). The WIMD 2014 is compiled from eight domains, Income, Employment, Health, Education, Housing, Access to Services, Physical Environment and Community Safety and is published at Lower Super Output Area of which there are 112 in Carmarthenshire.

Under WIMD, where Rank 1 is the most deprived, **Llandeilo 1** ranks 105 out of 112 LSOAs in Carmarthenshire and is ranked 1416 in Wales from 1909 LSOAs. **Llandeilo 2** ranks 50 in Carmarthenshire and is ranked 857 in Wales.

The highest level of deprivation attributed to **Llandeilo 1** is the Access to Services domain, being ranked 24<sup>th</sup> in Carmarthenshire and 182<sup>nd</sup> in Wales for this domain. In **Llandeilo 2** the Community Safety domain is the most prominent ranking 19<sup>th</sup> in Carmarthenshire and 672<sup>nd</sup> in Wales.

### Llandeilo 1 – Dynefwr Park Llandeilo 2 – Llandeilo Town Centre

LSOA	Overall Index		Income		Employment		Health		Education		Access to Services		Community Safety		Physical Environment		Housing	
	Rank	Wales	Count	Rank	Count	Rank	Count	Count	Rank	Count	Count	Rank	Count	Count	Rank	Count	Count	Rank
Llandeilo 1	1416	105	1372	93	1444	99	1386	95	1745	111	182	24	1494	72	1275	82	1574	99
Llandeilo 2	857	50	682	31	579	31	636	36	1396	92	1653	103	672	19	1328	84	763	39

Source: Welsh Index of Multiple Deprivation 2014 (updated August 2016) Welsh Assembly Government.

Note: LSOAs ranked 1-112 (Carmarthenshire), 1-1909 (Wales).

## CRIME

Llandeilo	Offence Group												Annual Total
	Arson & Criminal Damage	Burglary – Business & Community	Burglary – Residential	Drug Offences	Miscellaneous Crime Against Society	Possession of Weapons	Public Order Offences	Robbery	Sexual Offences	Theft	Vehicle Offences	Violence Against the Person	
<b>2017/2018</b>	17	2	3	12	2	1	4	0	8	19	3	34	<b>105</b>

Source: Dyfed Powys Police, Headquarters, Llanguonno.

**For further information please contact:**

Lesley Rees, Policy & Research Officer

01267 224462

llrees@carmarthenshire.gov.uk