

LLANDOVERY WARD: ELECTORAL DIVISION PROFILE

Policy Research and Information Section, Carmarthenshire County Council, January 2018

Councillors (Electoral Vote 2017): Handel Davies (Plaid Cymru) – Turnout = 50.56%

Electorate (December 2017): 2,010

Population: 2,590 (2016 Mid Year Population Estimates, ONS)

Welsh Assembly and UK Parliamentary Constituency: Carmarthenshire East & Dinefwr

Council owned Facilities: Llandovery Livestock Market, Llandovery Library, Ysgol Rhys Pritchard, Ysgol Bro Dinefwr (Llandovery), Sugar Loaf Mountain Picnic Site, Castle Sports Ground, Llandovery Castle Grounds & Play Area, Green Lodge Recreation Area, Llandovery Castle Fields Public Toilets, Llandovery Castle Car Park, Llandovery Station Car Park, Llandovery Craft Centre.



© Hawlfraint y Goron a hawliau cronfa ddata 2017 Arolwg Ordnans 100023377

© Crown copyright and database rights 2017 Ordnance Survey 100023377

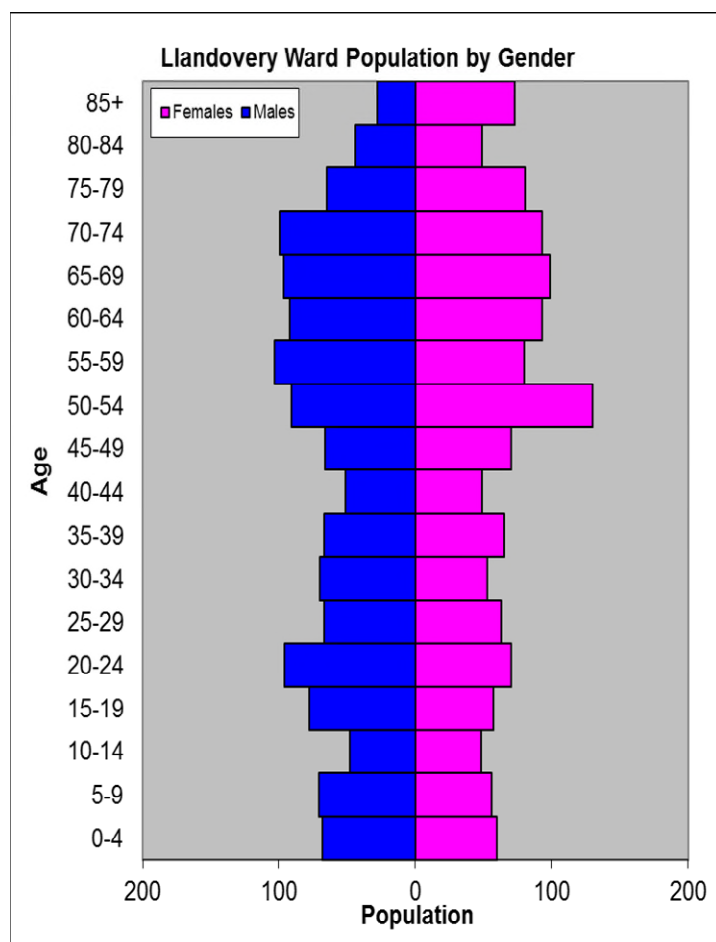
Location: Approximately 43km from Carmarthen Town

- ⇒ Regeneration Designations: Rural Development Plan 2007-2013 eligible ward
- ⇒ Area: 115.80km²
- ⇒ Population Density: 22 people per km²
- ⇒ Population Change: 2011-2016: -99 (-3.7%)
- ⇒ Major Employers: Carmarthenshire County Council (schools and leisure)

POPULATION STATISTICS 2016 Mid Year Population Estimates

Age Structure	Llandoverly Population	Llandoverly %	Carmarthenshire %
Aged: 0-4	128	4.9	5.3
5-14	223	8.6	11.3
15-24	301	11.6	10.8
25-44	485	18.7	21.6
45-64	725	28.0	28.0
65-74	388	15.0	12.8
75+	340	13.1	10.2
Total	2,590	100	100

Source: aggregated lower Super Output Area (LSOA) Small Area Population Estimates, 2016, Office for National Statistics (ONS)



- ⇒ 23rd lowest ward population in Carmarthenshire, and 7th lowest population density.
- ⇒ Highest proportion of people aged over 45, proportion aged over 65 higher than the Carmarthenshire Average.
- ⇒ Higher proportion of people with no qualifications than the Carmarthenshire average
- ⇒ A lower proportion of Welsh Speakers than the Carmarthenshire average.

2011 Census Data

Population: Key Facts	Llandoverly	Llandoverly %	Carmarthenshire
People: born in Wales	1745	64.9	76.0
born outside UK	137	5.1	4.1
in non-white ethnic groups	70	2.4	1.9
with limiting long-term illness	671	25.0	25.4
with no qualifications (aged 16-74)	684	30.2	26.8
with higher level qualifications (aged 16-74)	544	24.0	23.9
able to speak Welsh	1056	40.3	43.9

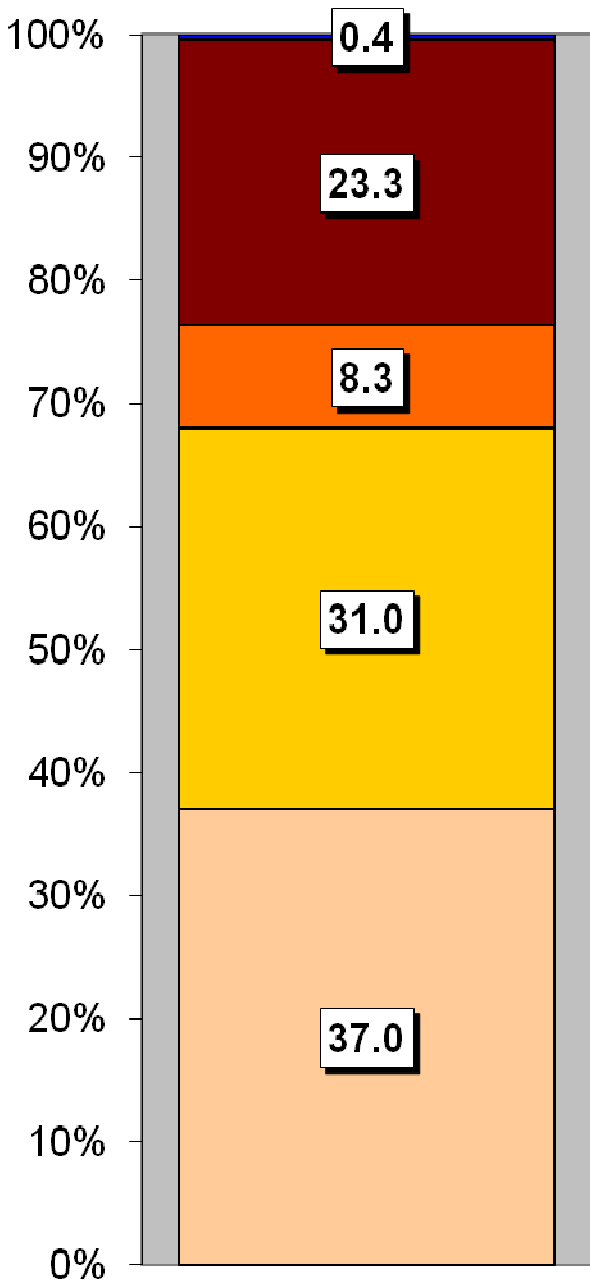
Household Composition	Llandoverly	Llandoverly %	Carmarthenshire
Total Households/ (Average Household Size)	1170	(2.1)	(2.3)
Household Type: one person: pensioner	250	21.4	14.8
one person: other	175	15.0	15.4
one family: all pensioners	127	10.9	9.8
one family: married couple	340	29.1	34.1
one family: cohabiting couple	88	7.6	8.7
one family: lone parent	131	11.2	11.3
one family: other	59	5.1	5.9

Source: 2011 Census, ONS

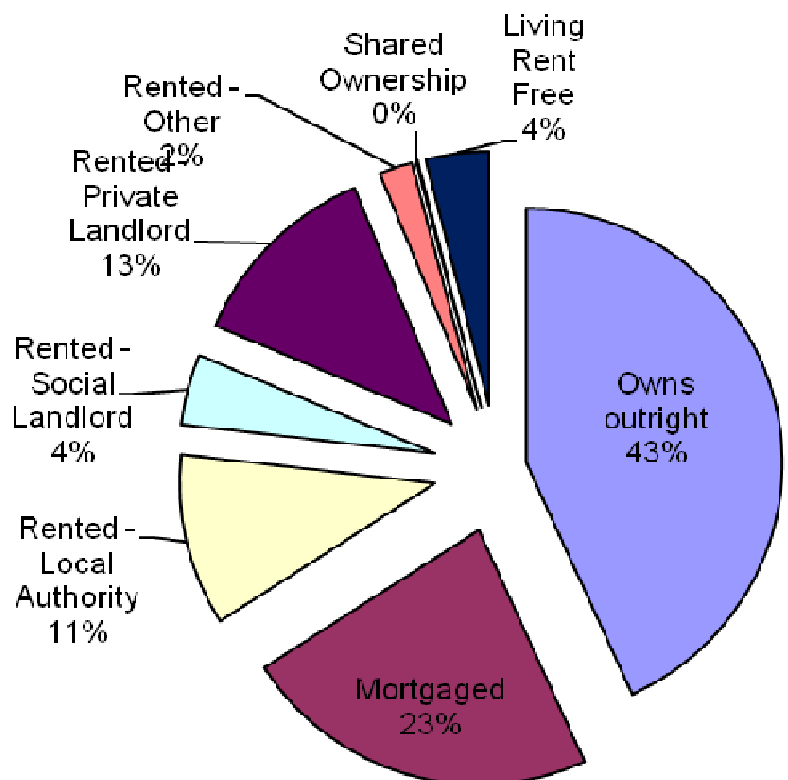
HOUSING

The area's housing consists mostly of detached houses and a higher proportion of semi-detached accommodation in comparison to the proportion of terraced housing. The ward consists of 128 local authority owned properties and 53 Housing Association properties.

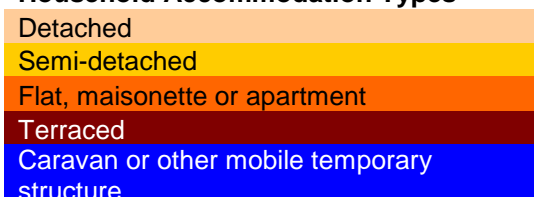
Household Accommodation Types



Household Tenure	%
Owns outright	43.2
Mortgaged	22.7
Rented - Local Authority	10.9
Rented - Social Landlord	4.5
Rented - Private Landlord	12.5
Rented - Other	2.1
Shared Ownership	0.1
Living Rent Free	4.0



Household Accommodation Types



SOCIO-ECONOMIC CHARACTERISTICS

- ⇒ The estimated median household income for Llandovery, based on CACI's 2017 'PayCheck' data, is £22,455 which is the 10th lowest (of 58 wards) in Carmarthenshire and 13% below the Carmarthenshire median of £25,365.
- ⇒ The social profile information indicates a higher than average level of people who are small employers and own account workers (Level 4).

Social Profile	Llandovery	%	Carmarthenshire %
<i>All people aged 16-74 in households</i>	1916	100	100
1: Higher Managerial & Professional Admin. Occupations	228	11.9	13.8
2: Lower Managerial & Professional Admin. Occupations	380	19.8	19.9
3: Intermediate Occupations	144	7.5	11.6
4: Small Employers & Own Account Workers	337	17.6	12.6
5: Lower Supervisory & Technical Occupations	157	8.2	7.6
6: Semi-routine Occupations	309	16.1	16.7
7: Routine Occupations	215	11.2	13.0
8: Never Worked & Long Term Unemployed	87	4.5	4.9

Source: 2011 Census, ONS

ECONOMY AND LABOUR MARKET

Benefit Claimants	Llandovery	Rate %	Carmarthenshire Working Population %
Unemployment Benefit (JSA): November 2017	10	0.7	1.0
Incapacity Benefits (ESA/IB/SDA) May 2017	110	7.2	9.1
Income Support: May 2017	15	1.0	1.6
Disability Living Allowance: May 2017	80	5.2	7.2
Pension Credit: May 2017 (Population 65+)	140	19.7	16.5
State Pension Claimants: May 2017	735	-	-

Source: Jobcentre Plus administrative system Dept. for Work & Pensions

Economic Status (people aged 16-74)	Llandovery	Llandovery %	Carmarthenshire %
Economically Active	1187	62.0	64.9
Employees: Part-time	239	12.5	13.9
Employees: Full-time	547	28.5	33.7
Self-employed	304	15.9	11.0
Unemployed	55	2.9	3.7
Full-time Student	42	2.2	2.5
Economically Inactive	729	38.0	35.1
Retired	376	19.6	18.1
Student	133	6.9	4.5
Looking after home/family	60	3.1	3.8
Permanently sick/disabled	101	5.3	6.8
Other	59	3.1	1.9

Source: 2011 Census, ONS

WELSH INDEX OF MULTIPLE DEPRIVATION (WIMD)

WIMD 2014 based on fine-grained geography of lower Super Output Areas (LSOAs). The WIMD 2014 is compiled from eight domains, Income, Employment, Health, Education, Housing, Access to Services, Physical Environment and Community Safety and is published at Lower Super Output Area of which there are 112 in Carmarthenshire.

Under WIMD, where Rank 1 is the most deprived, **Llandovery 1** ranks 41 out of 112 LSOAs in Carmarthenshire and is ranked 756 in Wales from 1909 LSOAs. **Llandovery 2** is ranked 87 in Carmarthenshire and 1243 from 1909 LSOAs in Wales.

The highest level of deprivation attributed to **Llandovery 1** is the Access to Services domain, being ranked 13th in Carmarthenshire and 81st in Wales for this domain. In **Llandovery 2** the Housing domain is the most prominent ranking 28th in Carmarthenshire and 576 in Wales.

Llandovery 1 – Cyngordy.

Llandovery 2- Llandovery College

LSOA	Overall Index		Income		Employment		Health		Education		Access to Services		Community Safety		Physical Environment		Housing	
	Rank	Wales	Rank	Wales	Rank	Wales	Rank	Wales	Rank	Wales	Rank	Wales	Rank	Wales	Rank	Wales	Rank	Wales
Llandovery 1	756	41	884	44	992	64	825	51	1069	62	81	13	1597	78	780	47	516	22
Llandovery 2	1243	87	1078	66	1139	76	1055	74	1043	59	1524	100	1492	71	554	33	576	28

Source: Welsh Index of Multiple Deprivation 2014 (updated August 2016), Welsh Assembly Government.

Note: LSOAs ranked 1-112 (Carmarthenshire), 1-1909 (Wales).

CRIME

Llandovery	Offence Group												Annual Total
	Arson & Criminal Damage	Burglary – Busnes & Community	Burglary – Residential	Drug Offences	Miscellaneous Crime Against Society	Possession of Weapons	Public Order Offences	Robbery	Sexual Offences	Theft	Vehicle Offences	Violence Against the Person	
2016/2017	12	6	1	14	2	0	3	0	7	12	6	36	99

Source: Dyfed Powys Police, Headquarters, Llangunon.

For further information please contact:

Lesley Rees, Policy & Research Officer

01267 224462

llrees@carmarthenshire.gov.uk