

LLANFIHANGEL-AR-ARTH WARD: ELECTORAL DIVISION PROFILE

Policy Research and Information Section, Carmarthenshire County Council, January 2018

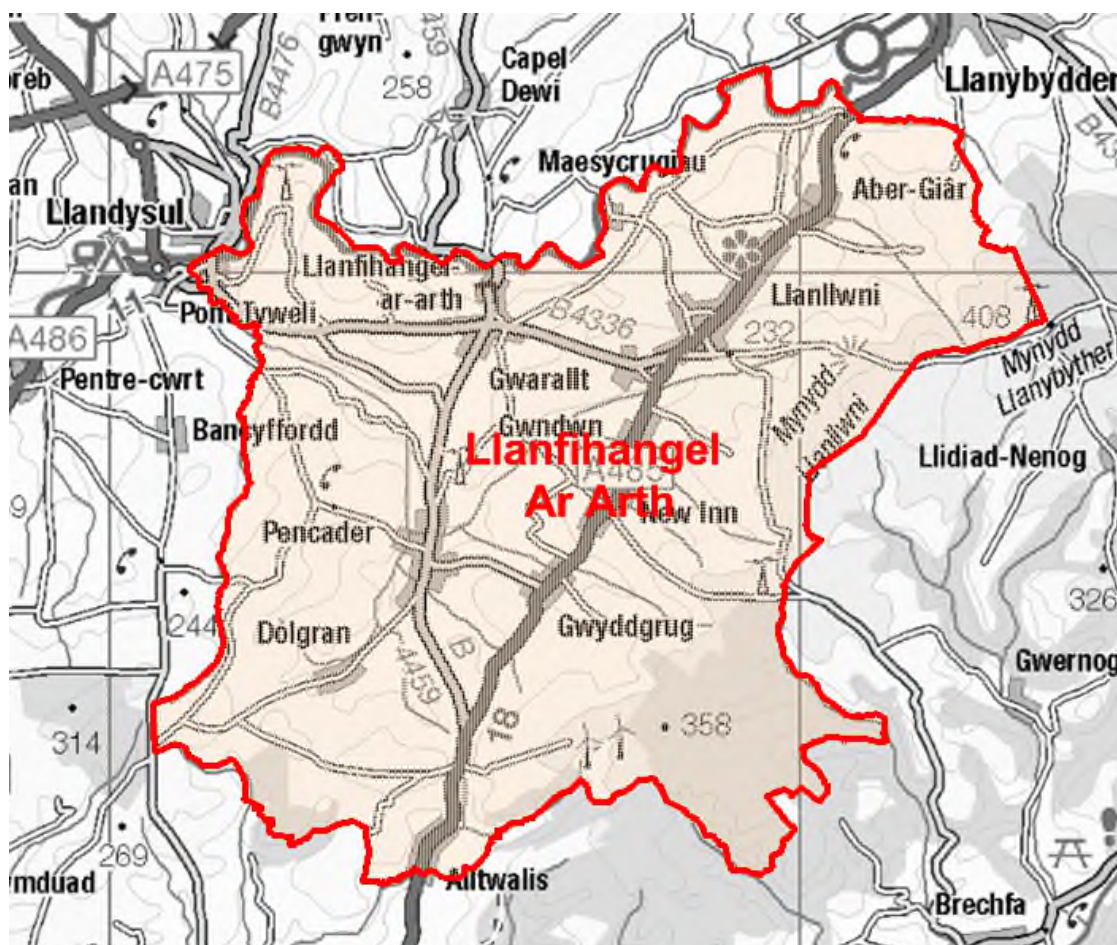
Councillors (Electoral Vote 2017): Linda Evans (Plaid Cymru) – NO ELECTION

Electorate (December 2017): 2,183

Population: 2,839 (2016 Mid Year Population Estimates, ONS)

Welsh Assembly and UK Parliamentary Constituency: Carmarthenshire East & Dinefwr

Council owned Facilities: Ysgol Cae'r Felin, Llanllwni V.C.P. School, Llandysul Canoeing Centre, Mynydd Llanybydder Picnic Site, Alltwalis Public Toilets, Pontwelly Public Toilets, Pencader Public Toilets, New Inn CP School (school closed).



© Hawlfraint y Goron a hawliau cronfa ddata 2017 Arolwg Ordnans 100023377

© Crown copyright and database rights 2017 Ordnance Survey 100023377

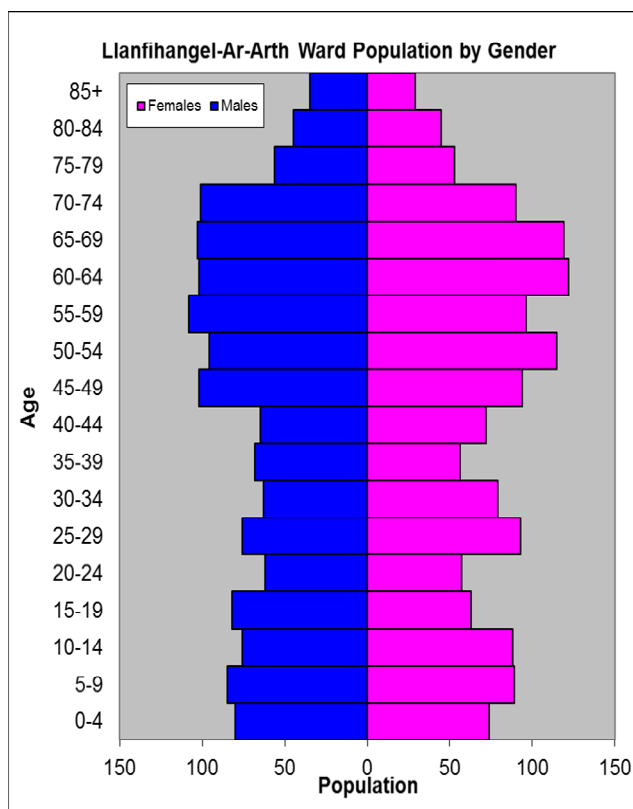
Location: Approximately 22km from Carmarthen Town

- ⇒ Regeneration Designations: Rural Development Plan 2007-2013 eligible ward
- ⇒ Area: 88.97km²
- ⇒ Population Density: 32 people per km²
- ⇒ Population Change: 2011-2016: -12 (-0.4%)
- ⇒ Major Employers: Carmarthenshire County Council (schools and leisure)

POPULATION STATISTICS 2016 Mid Year Population Estimates

Age Structure	Llanfihangel Ar-Arth Population	Llanfihangel Ar-Arth %	Carmarthenshire %
Aged: 0-4	154	5.4	5.2
5-14	338	11.9	11.3
15-24	264	9.3	10.8
25-44	572	20.1	21.6
45-64	835	29.4	28.0
65-74	413	14.5	12.8
75+	263	9.3	10.2
Total	2,839	100	100

Source: aggregated lower Super Output Area (LSOA) Small Area Population Estimates, 2016, Office for National Statistics (ONS)



- ⇒ 28th highest ward population in Carmarthenshire, and 12th lowest population density.
- ⇒ Highest proportion of people aged over 45, proportion aged 65-74 is higher than the Carmarthenshire Average.
- ⇒ Slightly lower proportion of people with limiting long term illness than the Carmarthenshire average.
- ⇒ Higher proportion of Welsh Speakers than the Carmarthenshire average.

2011 Census Data

Population: Key Facts	Llanfihangel Ar-Arth	Llanfihangel Ar-Arth %	Carmarthenshire
People: born in Wales	1843	64.6	76.0
born outside UK	123	4.3	4.1
in non-white ethnic groups	23	1.0	1.9
with limiting long-term illness	659	23.1	25.4
with no qualifications (aged 16-74)	625	26.7	26.8
with higher level qualifications (aged 16-74)	543	23.2	23.9
able to speak Welsh	1588	57.5	43.9

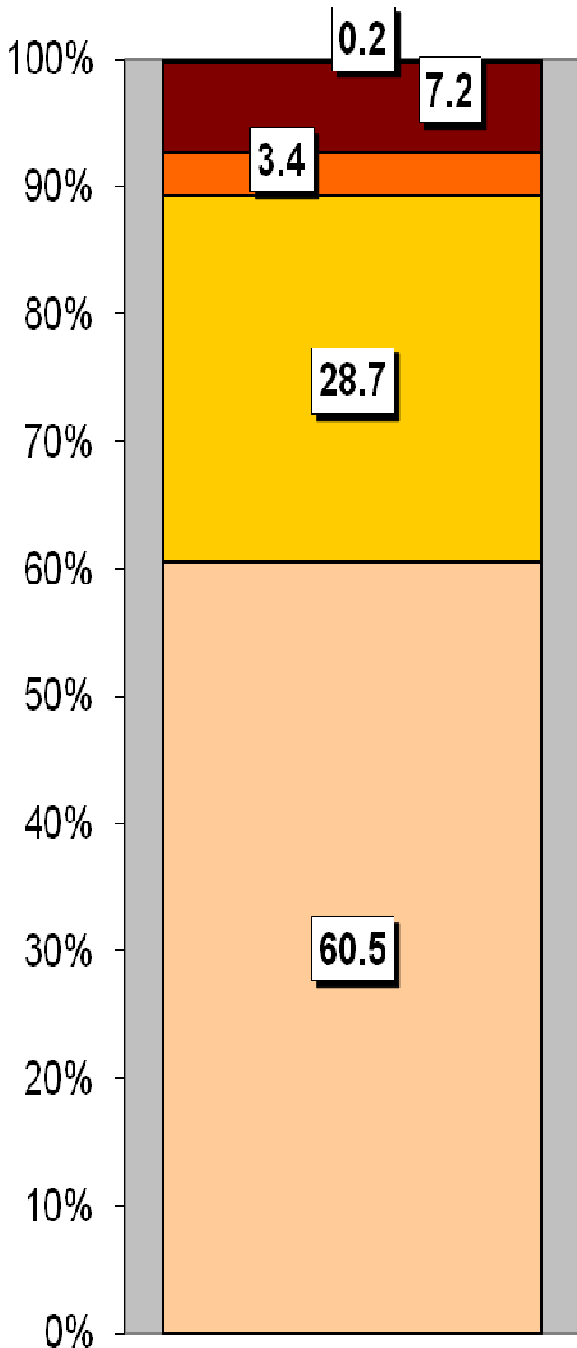
Household Composition	Llanfihangel Ar-Arth	Llanfihangel Ar-Arth %	Carmarthenshire
Total Households/ (Average Household Size)	1213	(2.3)	(2.3)
Household Type: one person: pensioner	145	12.0	14.8
one person: other	196	16.2	15.4
one family: all pensioners	129	10.6	9.8
one family: married couple	436	35.9	34.1
one family: cohabiting couple	110	9.1	8.7
one family: lone parent	123	10.2	11.3
one family: other	74	6.1	5.9

Source: 2011 Census, ONS

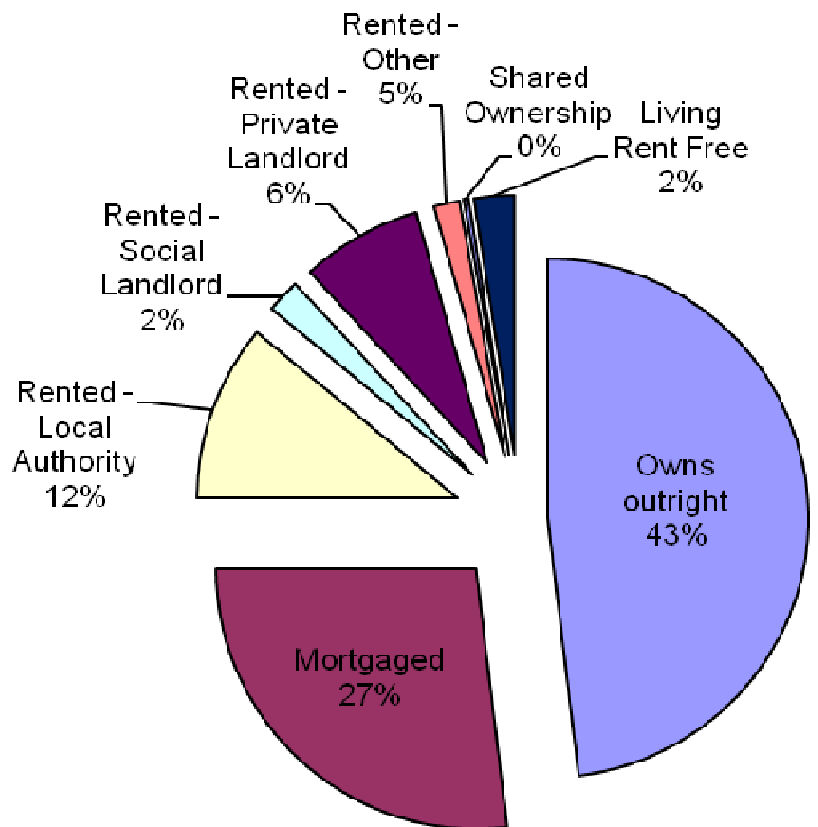
HOUSING

The area's housing consists mostly of detached houses, which make up over 60% of the accommodation. There is a higher proportion of terraced accommodation than flat, maisonette and apartments. The ward consists of 134 local authority owned properties and 25 Housing Association properties.

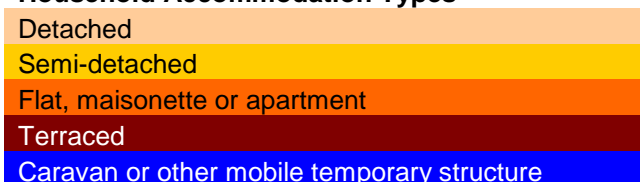
Household Accommodation Types



Household Tenure	%
Owns outright	48.1
Mortgaged	26.9
Rented - Local Authority	11
Rented - Social Landlord	2.1
Rented - Private Landlord	7.5
Rented - Other	1.6
Shared Ownership	0.3
Living Rent Free	2.5



Household Accommodation Types



SOCIO-ECONOMIC CHARACTERISTICS

- ⇒ The estimated median household income for Llanfihangel-Ar-Arth, based on CACI's 2017 'PayCheck' data, is £25,385 which is the 25th lowest (of 58 wards) in Carmarthenshire and 0.1% above the Carmarthenshire median of £25,365.
- ⇒ The social profile information indicates a lower than average level of people who have never worked and long term unemployed (Level 8) and a higher than average number of small employers and own account workers (Level 4).

Social Profile	Llanfihangel Ar-Arth	%	Carmarthenshire %
<i>All people aged 16-74 in households</i>	2096	100	100
1: Higher Managerial & Professional Admin. Occupations	266	12.7	13.8
2: Lower Managerial & Professional Admin. Occupations	346	16.5	19.9
3: Intermediate Occupations	234	11.2	11.6
4: Small Employers & Own Account Workers	481	22.9	12.6
5: Lower Supervisory & Technical Occupations	153	7.3	7.6
6: Semi-routine Occupations	328	15.6	16.7
7: Routine Occupations	239	11.4	13.0
8: Never Worked & Long Term Unemployed	74	3.5	4.9

Source: 2011 Census, ONS

ECONOMY AND LABOUR MARKET

Benefit Claimants	Llanfihangel Ar-Arth	Rate %	Carmarthenshire Working Population %
Unemployment Benefit (JSA): November 2017	13	0.8	1.0
Incapacity Benefits (ESA/IB/SDA) May 2017	125	7.4	9.1
Income Support: May 2017	20	1.2	1.6
Disability Living Allowance: May 2017	85	5.0	7.2
Pension Credit: May 2017 (Population 65+)	80	11.7	16.5
State Pension Claimants: May 2017	705	-	-

Source: Jobcentre Plus administrative system Dept. for Work & Pensions

Economic Status (people aged 16-74)	Llanfihangel Ar-Arth	Llanfihangel Ar-Arth %	Carmarthenshire %
Economically Active	1422	67.8	58.6
Employees: Part-time	245	11.7	10.75
Employees: Full-time	668	31.9	32.67
Self-employed	398	19.0	10.02
Unemployed	66	3.1	3.37
Full-time Student	45	2.1	1.78
Economically Inactive	674	32.2	41.4
Retired	371	17.7	16.12
Student	65	3.1	4.51
Looking after home/family	92	4.4	6.23
Permanently sick/disabled	127	6.1	11.07
Other	19	0.9	3.47

Source: 2011 Census, ONS

WELSH INDEX OF MULTIPLE DEPRIVATION (WIMD)

WIMD 2014 based on fine-grained geography of lower Super Output Areas (LSOAs). The WIMD 2014 is compiled from eight domains, Income, Employment, Health, Education, Housing, Access to Services, Physical Environment and Community Safety and is published at Lower Super Output Area of which there are 112 in Carmarthenshire.

Under WIMD, where Rank 1 is the most deprived, **Llanfihangel Ar Arth 1** ranks 42 out of 112 LSOAs in Carmarthenshire and is ranked 766 in Wales from 1909 LSOAs.

Llanfihangel Ar Arth 2 ranks 93 in Carmarthenshire and is ranked 1317 in Wales.

The highest level of deprivation attributed to **Llanfihangel Ar Arth 1** is the Housing domain, being ranked 3rd in Carmarthenshire and 196 in Wales for this domain. In **Llanfihangel Ar Arth 2** the Access to Services domain is the most prominent ranking 19th in Carmarthenshire and 137 in Wales.

Llanfihangel Ar Arth 1 – Pencader Llanfihangel Ar Arth 2 – Llanllwni Gwyddgrug

LSOA	Overall Index		Income		Employment		Health		Education		Access to Services		Community Safety		Physical Environment		Housing	
	Rank	Wales	Rank	Wales	Rank	Wales	Rank	Wales	Rank	Wales	Rank	Wales	Rank	Wales	Rank	Wales	Rank	Wales
Llanfihangel-ar-Arth 1	766	42	906	49	1016	66	1104	81	879	45	147	22	982	33	827	52	196	3
Llanfihangel-ar-Arth 2	1317	93	1379	95	1469	102	1230	86	1283	81	137	19	1848	102	1652	103	1298	75

Source: Welsh Index of Multiple Deprivation 2014 (updated August 2016), Welsh Assembly Government.

Note: LSOAs ranked 1-112 (Carmarthenshire), 1-1909 (Wales).

CRIME

Llanfihangel Ar Arth	Offence Group												Annual Total				
	Arson & Criminal Damage	Burglary – Business & Community	Burglary – Residential	Drug Offences	Miscellaneous Crime Against Society	Possession of Weapons	Public Order Offences	Robbery	Sexual Offences	Theft	Vehicle Offences	Violence Against the Person					
Fiscal Year (1st April to 31st March)																	
2016/2017	3	5	3	5	3	0	1	0	3	12	6	19	60				

Source: Dyfed Powys Police, Headquarters, Llangunnon.

For further information please contact:

Lesley Rees, Policy & Research Officer

01267 224462

llrees@carmarthenshire.gov.uk