

LLANGENNECH WARD: ELECTORAL DIVISION PROFILE

Policy Research and Information Section, Carmarthenshire County Council, January 2018

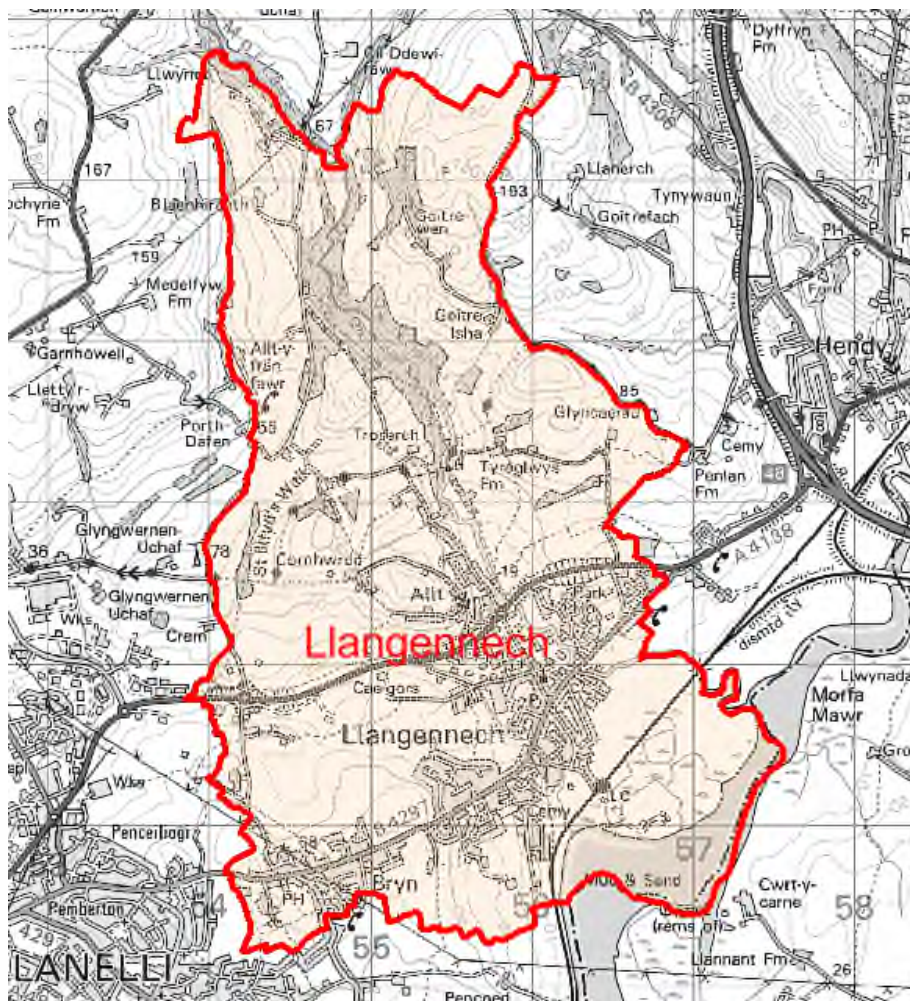
Councillors (Electoral Vote 2017 – Turnout = 43.30%): Gwyneth Thomas (Plaid Cymru), and Gary Jones (Labour)

Electorate (December 2017): 3,942

Population: 5,222 (2016 Mid Year Population Estimates, ONS)

Welsh Assembly and UK Parliamentary Constituency: Llanelli

Council owned Facilities: Bryn C.P. School, Llangennech C.P. Infant & Junior School, Llangennech Library, Former Llangennech Library/Community Centre Hendre Park Play Area.



© Hawlfraint y Goron a hawliau cronfa ddata 2017 Arolwg Ordnans 100023377

© Crown copyright and database rights 2017 Ordnance Survey 100023377

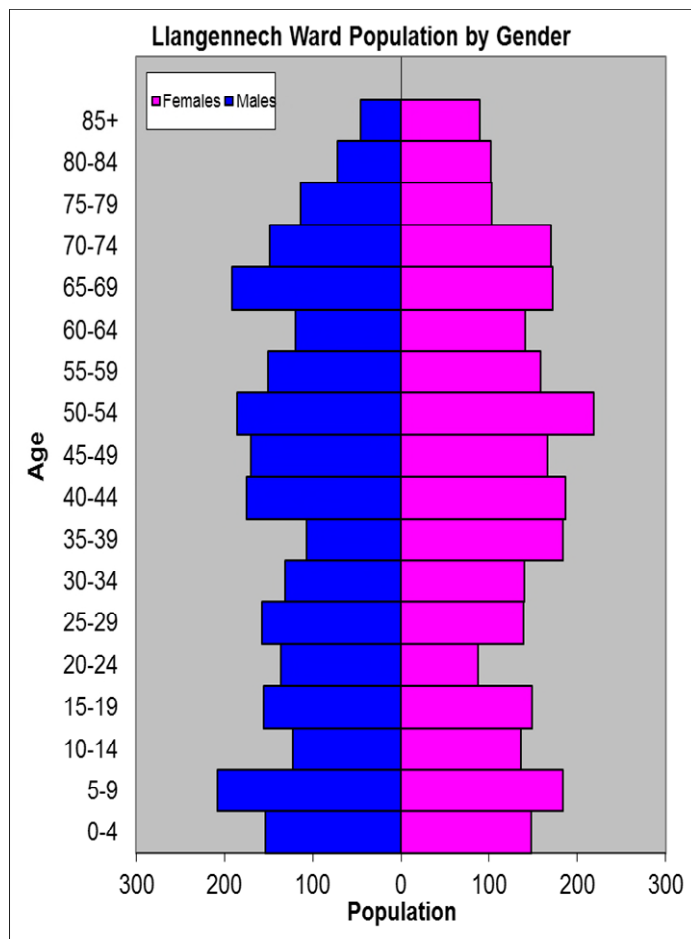
Location: Approximately 31km from Carmarthen Town

- ⇒ Area: 12.70km²
- ⇒ Population Density: 411 people km²
- ⇒ Population Change: 2011-2016:+258 (+5.2%)
- ⇒ Major Employers: Carmarthenshire County Council (schools and leisure)

POPULATION STATISTICS 2016 Mid Year Population Estimates

Age Structure	Llangennech Population	Llangennech %	Carmarthenshire %
Aged: 0-4	302	5.8	5.3
5-14	651	12.5	11.3
15-24	528	10.1	10.8
25-44	1,221	23.4	21.6
45-64	1,311	25.1	28.0
65-74	683	13.1	12.8
75+	526	10.1	10.2
Total	5,222	100	100

Source: aggregated lower Super Output Area (LSOA) Small Area Population Estimates, 2016, Office for National Statistics (ONS)



- ⇒ 6th highest ward population in Carmarthenshire, and 17th highest population density.
- ⇒ Highest proportion of people aged under 45.
- ⇒ Higher proportion of people with higher level qualifications
- ⇒ Lower proportion of Welsh Speakers

2011 Census Data

Population: Key Facts	Llangennech	Llangennech %	Carmarthenshire
People: born in Wales	4088	82.4	76.0
born outside UK	171	3.4	4.1
in non-white ethnic groups	119	2.3	1.9
with limiting long-term illness	1268	25.5	25.4
with no qualifications (aged 16-74)	927	23.0	26.8
with higher level qualifications (aged 16-74)	1013	25.1	23.9
able to speak Welsh	1912	39.9	43.9

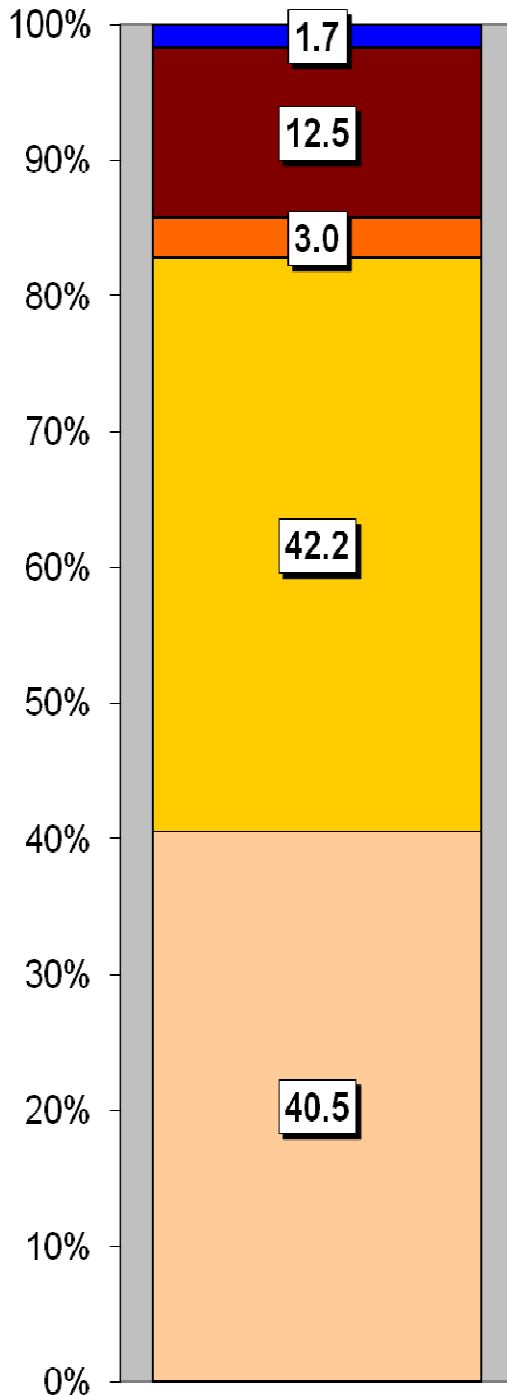
Household Composition	Llangennech	Llangennech %	Carmarthenshire
Total Households/ (Average Household Size)	2084	(2.4)	(2.3)
Household Type: one person: pensioner	305	14.6	14.8
one person: other	245	11.8	15.4
one family: all pensioners	240	11.5	9.8
one family: married couple	820	39.3	34.1
one family: cohabiting couple	176	8.4	8.7
one family: lone parent	205	9.8	11.3
one family: other	93	4.5	5.9

Source: 2011 Census, ONS

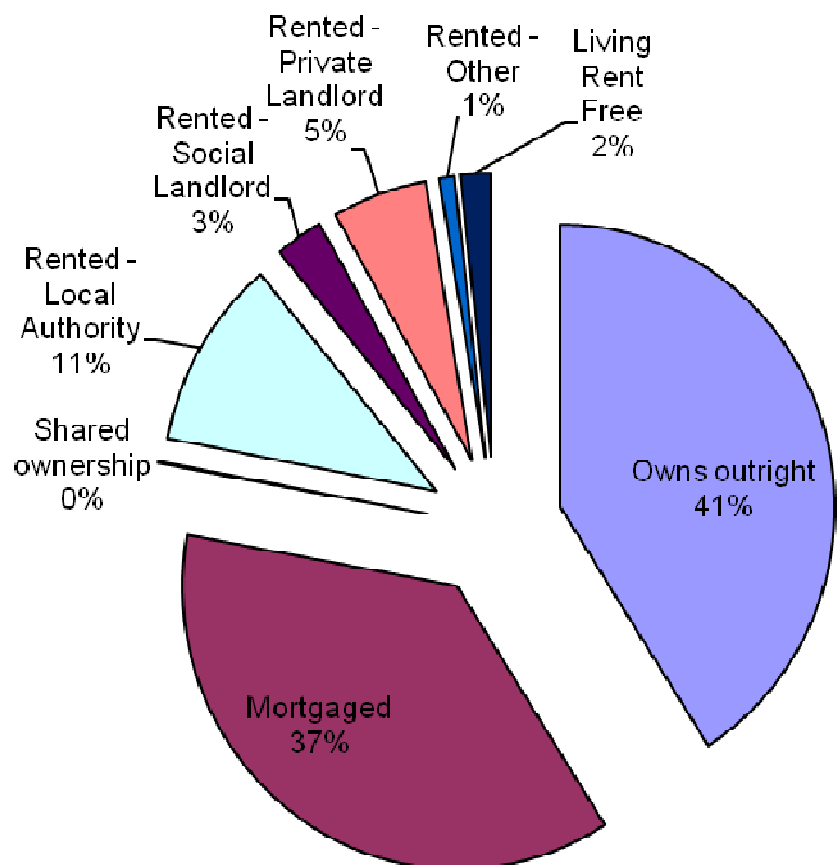
HOUSING

The area's housing consists mostly of semi-detached houses and a higher proportion of detached houses compared to the number of terraced housing. The ward consists of 228 local authority owned properties and 58 Housing Association properties.

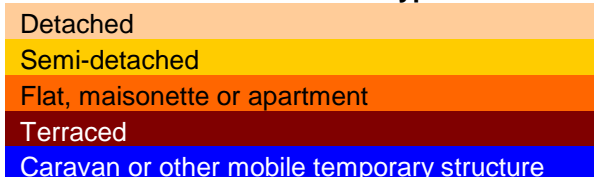
Household Accommodation Types



Household Tenure	%
Owns outright	40.9
Mortgaged	36.9
Shared ownership	0.1
Rented - Local Authority	10.9
Rented - Social Landlord	2.8
Rented - Private Landlord	5.6
Rented - Other	0.9
Living Rent Free	1.8



Household Accommodation Types



SOCIO-ECONOMIC CHARACTERISTICS

- ⇒ The estimated median household income for Llangennech based on CACI's 2017 'PayCheck' data, is £28,104 which is the 15th highest (of 58 wards) in Carmarthenshire and 9.7% above the Carmarthenshire median of £25,365.
- ⇒ The social profile information indicates a higher than average level of people in higher/lower managerial and professional administrative occupations and intermediate occupations (Levels 1-3) and a lower than average in routine occupations (Level 7).

Social Profile	Llangennech	%	Carmarthenshire %
<i>All people aged 16-74 in households</i>	3564	100	100
1: Higher Managerial & Professional Admin. Occupations	548	15.4	13.8
2: Lower Managerial & Professional Admin. Occupations	817	22.9	19.9
3: Intermediate Occupations	548	15.4	11.6
4: Small Employers & Own Account Workers	280	7.9	12.6
5: Lower Supervisory & Technical Occupations	297	8.3	7.6
6: Semi-routine Occupations	563	15.8	16.7
7: Routine Occupations	397	11.1	13.0
8: Never Worked & Long Term Unemployed	145	4.1	4.9

Source: 2011 Census, ONS

ECONOMY AND LABOUR MARKET

Benefit Claimants	Llangennech	Rate %	Carmarthenshire Working Population %
Unemployment Benefit (JSA): November 2017	27	0.9	1.3
Incapacity Benefits (ESA/IB/SDA) May 2017	235	7.9	9.1
Income Support: May 2017	45	1.5	1.6
Disability Living Allowance: May 2017	270	9.1	7.2
Pension Credit: May 2017 (Population 65+)	170	14.1	16.5
State Pension Claimants: May 2017	1,205	-	-

Source: Jobcentre Plus administrative system Dept. for Work & Pensions

Economic Status (people aged 16-74)	Llangennech	Llangennech %	Carmarthenshire %
Economically Active	2310	64.9	64.9
Employees: Part-time	526	14.8	13.9
Employees: Full-time	1337	37.5	33.7
Self-employed	248	7.0	11.0
Unemployed	103	2.9	3.7
Full-time Student	96	2.7	2.5
Economically Inactive	1254	35.3	35.1
Retired	723	20.3	18.1
Student	152	4.3	4.5
Looking after home/family	106	3.0	3.8
Permanently sick/disabled	210	5.9	6.8
Other	63	1.8	1.9

Source: 2011 Census, ONS

WELSH INDEX OF MULTIPLE DEPRIVATION (WIMD)

WIMD 2014 based on fine-grained geography of lower Super Output Areas (LSOAs). The WIMD 2014 is compiled from eight domains, Income, Employment, Health, Education, Housing, Access to Services, Physical Environment and Community Safety and is published at Lower Super Output Area of which there are 112 in Carmarthenshire.

Under WIMD, where Rank 1 is the most deprived, **Llangennech 1** ranks 94 in Carmarthenshire from 112 LSOAs and is ranked 1325 in Wales from 1909 LSOAs.

Llangennech 2 ranks 65 in Carmarthenshire and is ranked 1012 from 1909 LSOAs in Wales, whilst **Llangennech 3** ranks 85 in Carmarthenshire and ranked 1210 in Wales from 1909 LSOAs.

The highest level of deprivation attributed to **Llangennech 1** is the Community Safety domain being ranked 67th in Carmarthenshire and 1442nd in Wales. In **Llangennech 2** the Access to Services domain is the most prominent ranking 45th in Carmarthenshire and 393rd in Wales. In **Llangennech 3** the Physical Environment domain is the most dominant ranking 22nd in Carmarthenshire and 395th in Wales.

Llangennech 1 - Troserch

Llangennech 2 - Bryn

Llangennech 3 – Llangennech Park

LSOA	Overall Index		Income		Employment		Health		Education		Access to Services		Community Safety		Physical Environment		Housing	
	Rank	Wales	Rank	Wales	Rank	Wales	Rank	Wales	Rank	Wales	Rank	Wales	Rank	Wales	Rank	Wales	Rank	Wales
Llangennech 1	1325	94	1270	83	1115	75	990	68	1192	74	694	68	1442	67	1396	87	1255	70
Llangennech 2	1012	65	958	53	858	47	1024	73	1001	56	393	45	1609	79	1854	111	1068	60
Llangennech 3	1210	85	1142	73	1140	77	793	47	1090	63	1123	88	1393	63	395	22	1704	108

Source: Welsh Index of Multiple Deprivation 2014 (updated August 2016), Welsh Assembly Government.

Note: LSOAs ranked 1-112 (Carmarthenshire), 1-1909 (Wales).

CRIME

Llangennech	Offence Group												Annual Total
	Arson & Criminal Damage	Burglary – Business & Community	Burglary – Cartref	Drug Offences	Miscellaneous Crime Against Society	Possession of Weapons	Public Order Offences	Robbery	Sexual Offences	Theft	Vehicle Offences	Violence Against the Person	
Fiscal Year (1st April to 31st March)													
2016/2017	34	5	4	6	7	0	6	0	3	7	9	36	117

Source: Dyfed Powys Police, Headquarters, Llangunnor.

For further information please contact:

Lesley Rees, Policy & Research Officer

01267 224462

lrees@carmarthenshire.gov.uk