

## LLANGUNNOR WARD: ELECTORAL DIVISION PROFILE

Policy Research and Information Section, Carmarthenshire County Council, January 2019

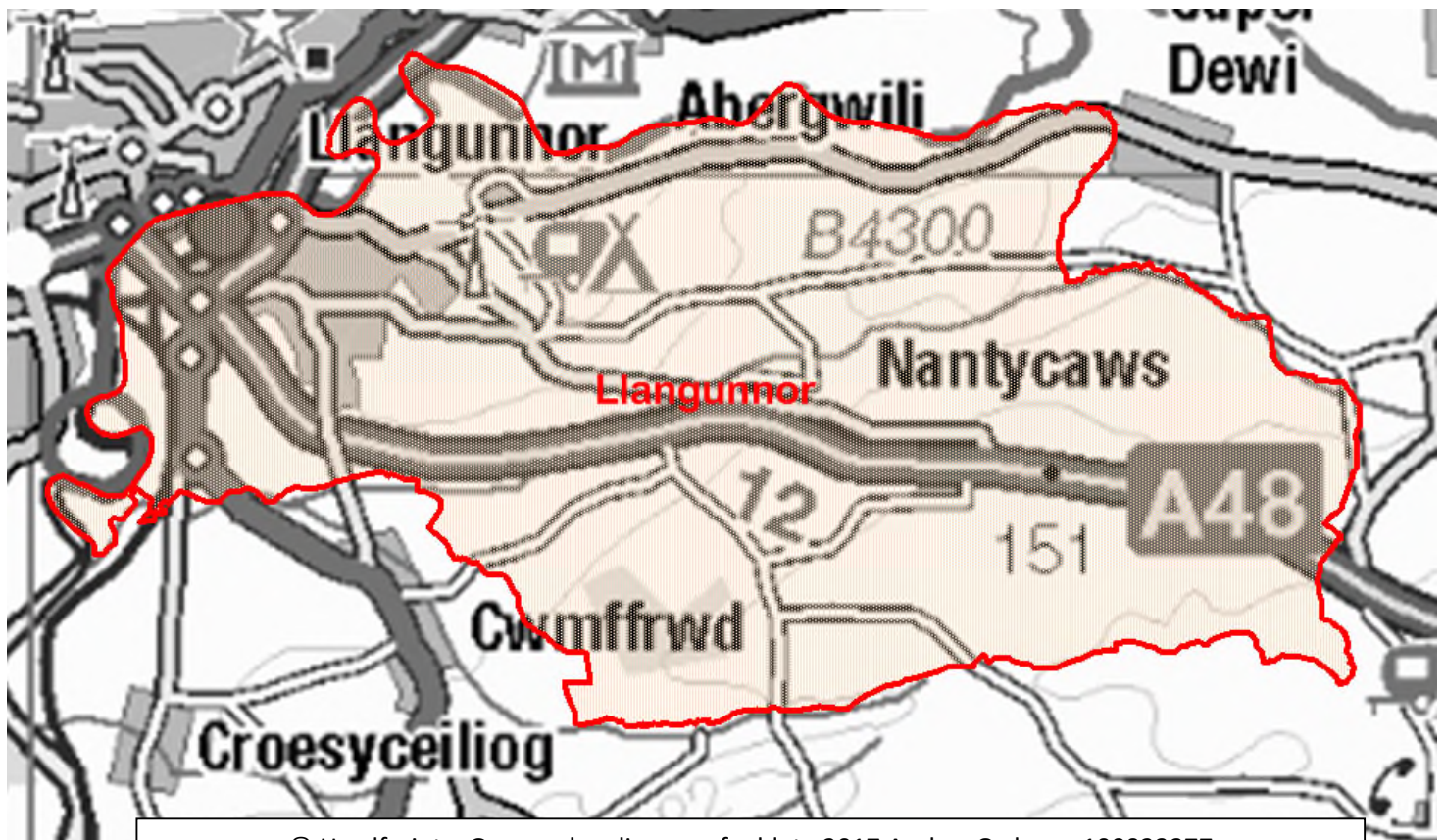
**Councillors (Electoral Vote 2017):** Dewi Elwyn Williams (Plaid Cymru). Turnout = 53.91%

**Electorate (December 2018):** 2,071

**Population:** 2,600 (2017 Mid Year Population Estimates, ONS)

**Welsh Assembly and UK Parliamentary Constituency:** Carmarthenshire East & Dinefwr

**Council owned Facilities:** Llangunnor C.P. School, Llangunnor Playing Fields, Station Approach Car Park.



© Hawlfraint y Goron a hawliau cronfa ddata 2017 Arolwg Ordnans 100023377

© Crown copyright and database rights 2017 Ordnance Survey 100023377

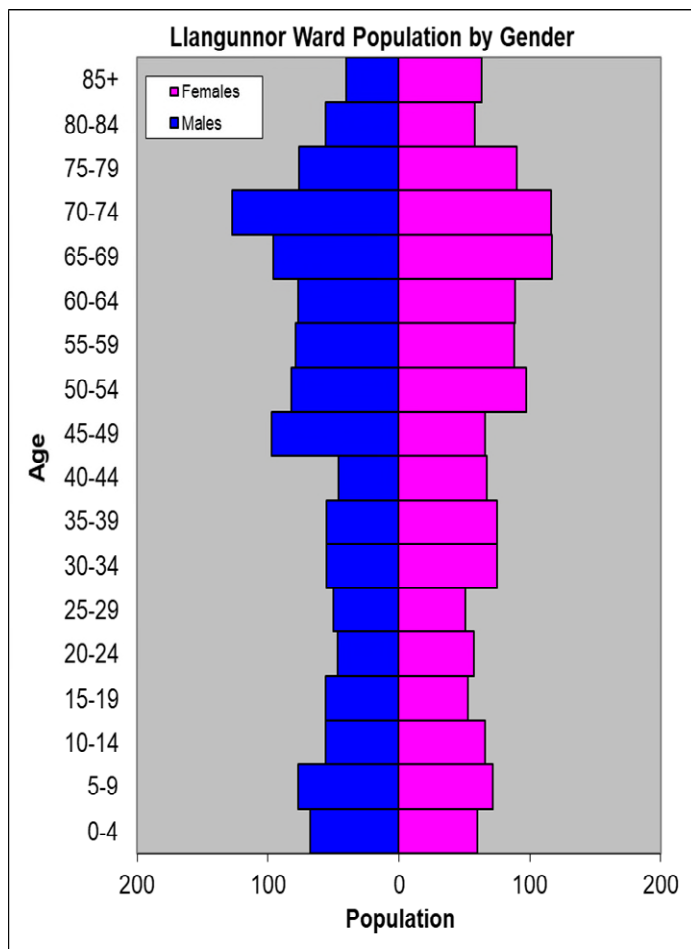
### Location: Approximately 2km from Carmarthen Town

- ⇒ Regeneration Designations: Rural Development Plan 2007-2013 eligible ward
- ⇒ Area: 23.32km<sup>2</sup>
- ⇒ Population Density: 111 people per km<sup>2</sup>
- ⇒ Population Change: 2011-2017: +219 (+9.2%)
- ⇒ Major Employers: Carmarthenshire County Council (schools and leisure)

## POPULATION STATISTICS 2017 Mid Year Population Estimates

Age Structure	Llangunnor Population	Llangunnor %	Carmarthenshire %
Aged: 0-4	128	4.9	5.2
5-14	271	10.4	11.4
15-24	213	8.2	10.5
25-44	474	18.2	21.6
45-64	675	26.0	28.0
65-74	456	17.5	13.0
75+	383	14.7	10.3
<b>Total</b>	<b>2,600</b>	<b>100</b>	<b>100</b>

Source: aggregated lower Super Output Area (LSOA) Small Area Population Estimates, 2017, Office for National Statistics (ONS)



- ⇒ 23<sup>rd</sup> lowest ward population in Carmarthenshire, and 27<sup>th</sup> lowest population density.
- ⇒ Highest proportion of people aged over 45.
- ⇒ Higher proportion of people with no qualifications
- ⇒ Just over 4% higher proportion of Welsh Speakers than the Carmarthenshire average.

## 2011 Census Data

Population: Key Facts	Llangunnor	Llangunnor %	Carmarthenshire
<b>People:</b> born in Wales	1885	79.2	76.0
born outside UK	75	3.2	4.1
in non-white ethnic groups	37	1.4	1.9
with limiting long-term illness	601	25.3	25.4
with no qualifications (aged 16-74)	582	28.9	26.8
with higher level qualifications (aged 16-74)	551	27.3	23.9
able to speak Welsh	1111	48.0	43.9

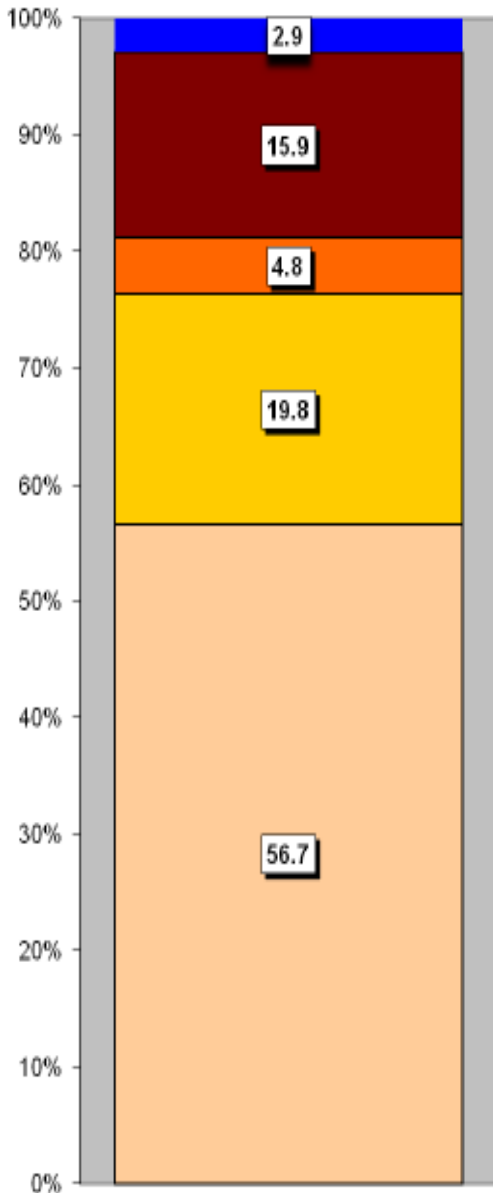
Household Composition	Llangunnor	Llangunnor %	Carmarthenshire
<b>Total Households/</b> (Average Household Size)	1063	(2.2)	(2.3)
Household Type: one person: pensioner	178	16.7	14.8
one person: other	126	11.9	15.4
one family: all pensioners	163	15.3	9.8
one family: married couple	376	35.4	34.1
one family: cohabiting couple	65	6.2	8.7
one family: lone parent	111	10.5	11.3
one family: other	44	4.1	5.9

Source: 2011 Census, ONS

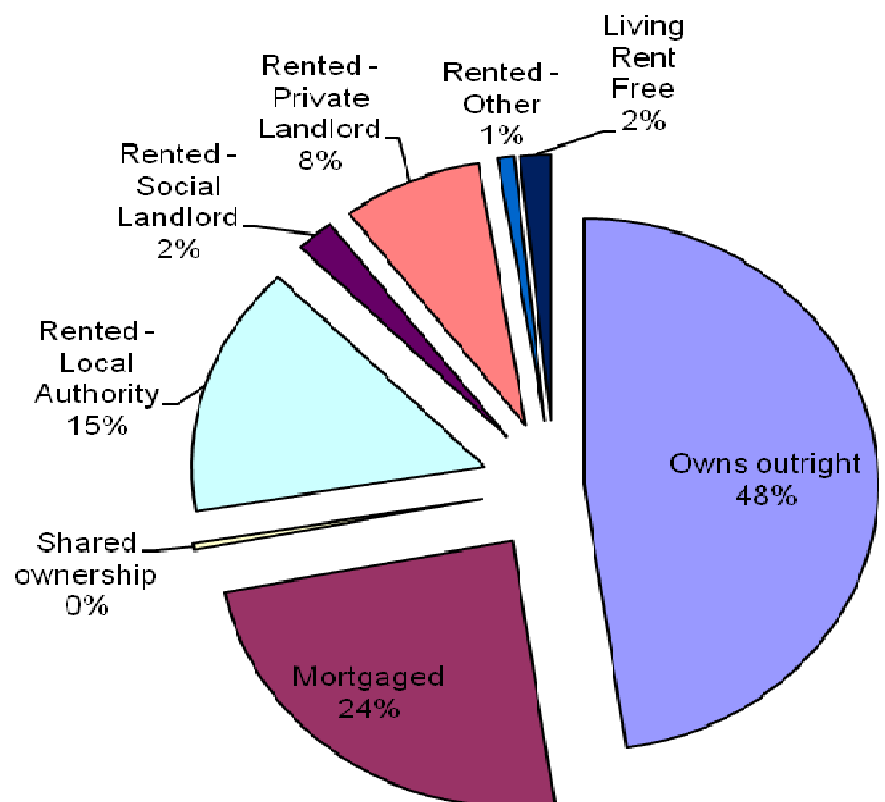
## HOUSING

The area's housing consists mostly of detached houses, making up almost 57% of the housing stock. Semi-detached and terrace have similar proportions, and flat, maisonette and apartment has the smallest proportion with 3%. The ward consists of 163 local authority owned properties and 22 Housing Association properties.

### Household Accommodation Types



Household Tenure	%
Owns outright	47.7
Mortgaged	24.2
Shared ownership	0.4
Rented - Local Authority	15.3
Rented - Social Landlord	2.1
Rented - Private Landlord	7.7
Rented - Other	0.9
Living Rent Free	1.7



### Household Accommodation Types



## SOCIO-ECONOMIC CHARACTERISTICS

- ⇒ The estimated median household income for Llangunnor, based on CACI's 2018 'PayCheck' data, is £28,347 which is the 15<sup>th</sup> highest (of 58 wards) in Carmarthenshire and 10.1% above the Carmarthenshire median of £25,488.
- ⇒ The social profile information indicates a higher than average level of people in higher/lower managerial and professional administrative occupations and intermediate occupations (Levels 1-3) and a lower than average proportion in lower supervisory and technical occupations (Level 5).

Social Profile	Llangunnor	%	Carmarthenshire %
<i>All people aged 16-74 in households</i>	1735	100	100
<b>1: Higher Managerial &amp; Professional Admin. Occupations</b>	284	16.4	13.8
<b>2: Lower Managerial &amp; Professional Admin. Occupations</b>	396	22.8	19.9
<b>3: Intermediate Occupations</b>	236	13.6	11.6
<b>4: Small Employers &amp; Own Account Workers</b>	215	12.4	12.6
<b>5: Lower Supervisory &amp; Technical Occupations</b>	102	5.9	7.6
<b>6: Semi-routine Occupations</b>	273	15.7	16.7
<b>7: Routine Occupations</b>	223	12.9	13.0
<b>8: Never Worked &amp; Long Term Unemployed</b>	42	2.4	4.9

Source: 2011 Census, ONS

## ECONOMY AND LABOUR MARKET

Benefit Claimants	Llangunnor	Rate %	Carmarthenshire Working Population %
Unemployment Benefit (JSA): November 2018	9	0.7	1.4
Incapacity Benefits (ESA/IB/SDA) May 2018	95	7.2	9.0
Income Support: May 2018	15	1.1	1.5
Disability Living Allowance: May 2018	75	5.7	6.2
Pension Credit: May 2018 (Population 65+)	85	10.6	15.3
State Pension Claimants: May 2018	785	-	-

Source: Jobcentre Plus administrative system Dept. for Work & Pensions

Economic Status (people aged 16-74)	Llangunnor	Llangunnor %	Carmarthenshire %
<b>Economically Active</b>	1094	63.0	64.9
Employees: Part-time	276	15.9	13.9
Employees: Full-time	544	31.4	33.7
Self-employed	191	11.0	11.0
Unemployed	32	1.8	3.7
Full-time Student	51	2.9	2.5
<b>Economically Inactive</b>	641	36.9	35.1
Retired	442	25.5	18.1
Student	56	3.2	4.5
Looking after home/family	37	2.1	3.8
Permanently sick/disabled	88	5.1	6.8
Other	18	1.0	1.9

Source: 2011 Census, ONS

## WELSH INDEX OF MULTIPLE DEPRIVATION (WIMD)

WIMD 2014 based on fine-grained geography of lower Super Output Areas (LSOAs). The WIMD 2014 is compiled from eight domains, Income, Employment, Health, Education, Housing, Access to Services, Physical Environment and Community Safety and is published at Lower Super Output Area of which there are 112 in Carmarthenshire.

Under WIMD, where Rank 1 is the most deprived, **Llangunnor 1** ranks 58 in Carmarthenshire from 112 LSOAs and is ranked 921 in Wales from 1909 LSOAs.

**Llangunnor 2** ranks 100 in Carmarthenshire and 1409 from 1909 LSOAs in Wales.

The highest level of deprivation attributed to **Llangunnor 1** is the Access to Services domain domain, being ranked 35<sup>th</sup> in Carmarthenshire and 285<sup>th</sup> in Wales for this domain.

Likewise, in **Llangunnor 2** the Access to Services domain is also the most prominent ranking 27<sup>th</sup> in Carmarthenshire and 218<sup>th</sup> in Wales.

### Llangunnor 1 – Police HQ, Brynmeurig    Llangunnor 2 – Nantycaws, Pibwrlwyd

LSOA	Overall Index		Income		Employment		Health		Education		Access to Services		Community Safety		Physical Environment		Housing	
	Rank	Score	Rank	Score	Rank	Score	Rank	Score	Rank	Score	Rank	Score	Rank	Score	Rank	Score	Rank	Score
Llangunnor 1	937	59	1020	58	864	49	969	64	977	55	285	35	1318	58	1038	65	1070	61
Llangunnor 2	1402	101	1596	106	1379	95	1586	107	1342	83	218	27	1139	43	1185	74	1172	66

Source: Welsh Index of Multiple Deprivation 2014 (updated August 2016), Welsh Assembly Government.

Note: LSOAs ranked 1-112 (Carmarthenshire), 1-1909 (Wales).

## CRIME

Llangunnor	Offence Group												Annual Total
	Arson & Criminal Damage	Burglary – Business & Community	Burglary – Residential	Drug Offences	Miscellaneous Crime Against Society	Possession of Weapons	Public Order Offences	Robbery	Sexual Offences	Theft	Vehicle Offences	Violence Against the Person	
<b>2017/2018</b>	25	1	0	11	2	0	3	0	4	94	3	37	<b>180</b>

Source: Dyfed Powys Police, Headquarters, Llangunnor.

**For further information please contact:**

Lesley Rees, Policy & Research Officer

01267 224462

llrees@carmarthenshire.gov.uk