

ST. ISHMAEL WARD: ELECTORAL DIVISION PROFILE

Policy Research and Information Section, Carmarthenshire County Council January 2019

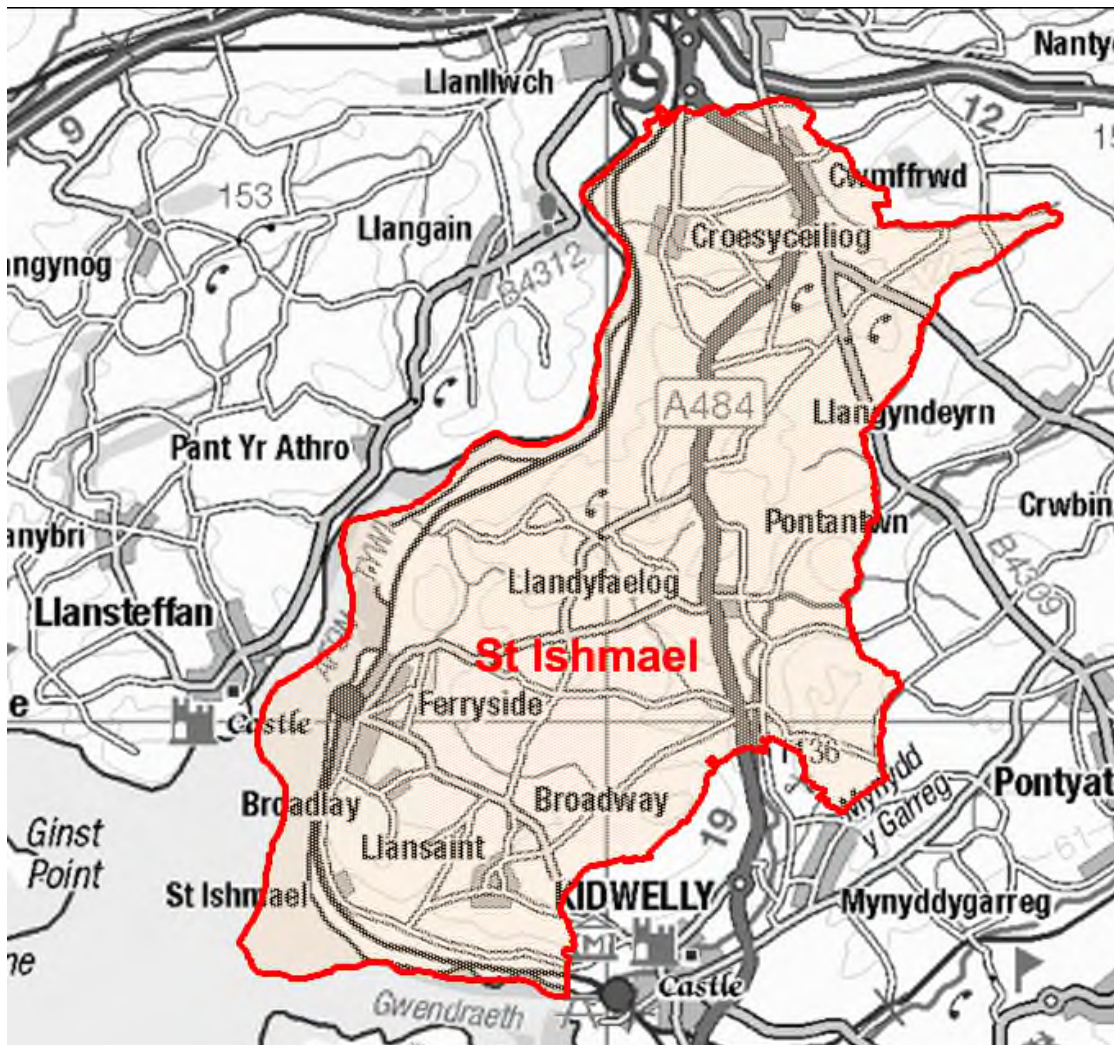
Councillors (Electoral Vote 2017): Mair Stephens (Independent). Turnout = 53.29%

Electorate (December 2018): 2,282

Population: 2,631 (2017 Mid Year Population Estimates, ONS)

Welsh Assembly and UK Parliamentary Constituency: Carmarthenshire East & Dinefwr

Council owned Facilities: Ysgol Y Fro Idole (school closed), Ferryside Playing Fields, Ferryside V.C.P. School, Ysgol Gyfun Bro Myrddin, Ferryside Public Toilets, Eva Terrace Car Park Ferryside.



© Hawlfraint y Goron a hawliau cronfa ddata 2017 Arolwg Ordnans 100023377

© Crown copyright and database rights 2017 Ordnance Survey 100023377

Location: Approximately 18km from Carmarthen Town

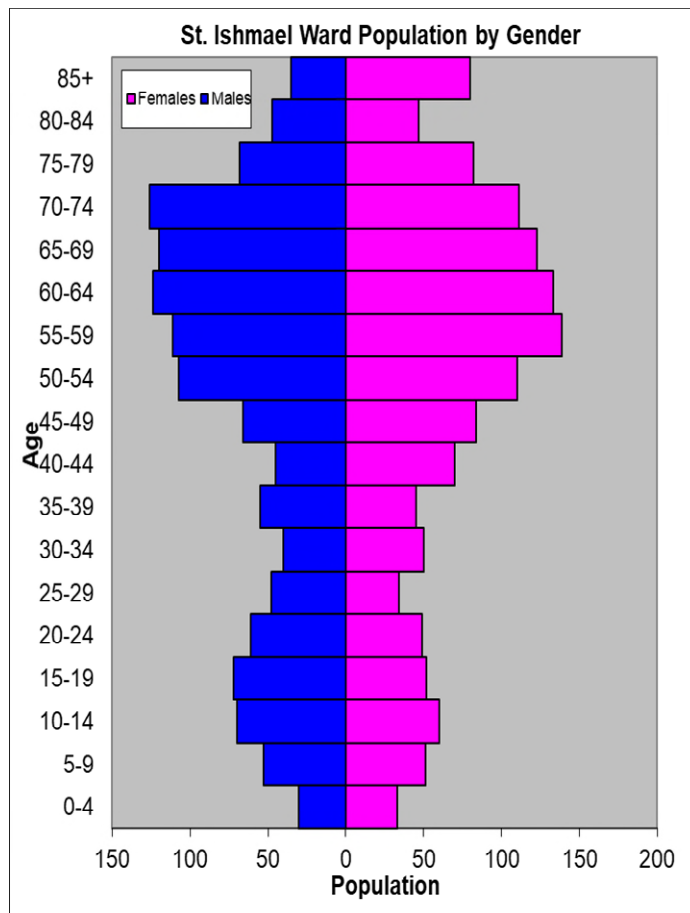
- ⇒ Regeneration Designations: Rural Development Plan 2007-2013 eligible ward
- ⇒ Area: 57.81km²
- ⇒ Population Density: 46 people per km²
- ⇒ Population Change: 2011-2017:-43 (-1.6%)
- ⇒ Major Employers: Carmarthenshire County Council (schools and leisure)

POPULATION STATISTICS

2017 Mid Year Population Estimates

Age Structure	St. Ishmael Population	St. Ishmael %	Carmarthenshire %
Aged: 0-4	63	2.4	5.2
5-14	234	8.9	11.4
15-24	234	8.9	10.5
25-44	387	14.7	21.6
45-64	874	33.2	28.0
65-74	480	18.2	13.0
75+	359	13.6	10.3
Total	2,631	100	100

Source: aggregated lower Super Output Area (LSOA) Small Area Population Estimates, 2017, Office for National Statistics (ONS)



- ⇒ 25th lowest ward population in Carmarthenshire, and 16th lowest population density.
- ⇒ Highest proportion of people aged over 45, proportion aged over 75 higher than the Carmarthenshire Average.
- ⇒ High proportion of people with higher level qualifications
- ⇒ Higher proportion of Welsh Speakers than the Carmarthenshire average.

2011 Census Data

Population: Key Facts	St. Ishmael	St. Ishmael %	Carmarthenshire
People: born in Wales	1895	70.9	76.0
born outside UK	85	3.1	4.1
in non-white ethnic groups	32	1.1	1.9
with limiting long-term illness	700	26.1	25.4
with no qualifications (aged 16-74)	493	21.4	26.8
with higher level qualifications (aged 16-74)	771	33.5	23.9
able to speak Welsh	1275	48.7	43.9

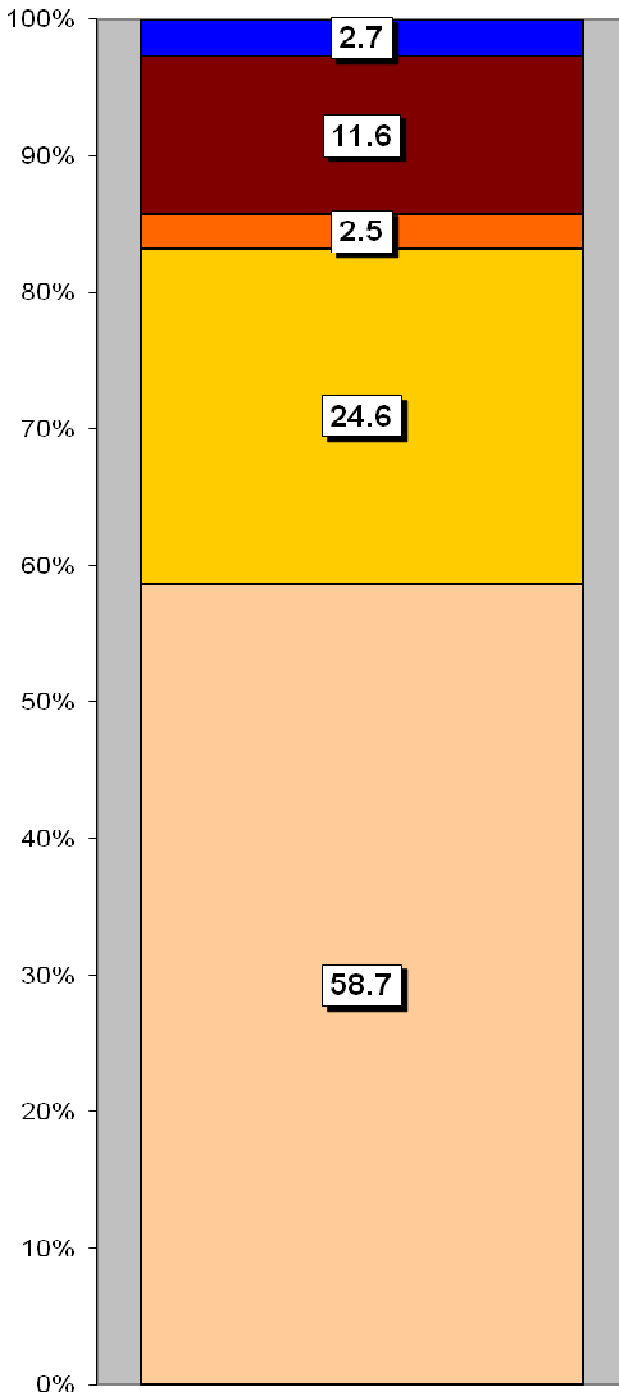
Household Composition	St. Ishmael	St. Ishmael %	Carmarthenshire
Total Households/ (Average Household Size)	1158	(2.3)	(2.3)
Household Type: one person: pensioner	183	15.8	14.8
one person: other	151	13.0	15.4
one family: all pensioners	149	12.9	9.8
one family: married couple	465	40.1	34.1
one family: cohabiting couple	72	6.1	8.7
one family: lone parent	77	6.6	11.3
one family: other	61	5.2	5.9

Source: 2011 Census, ONS

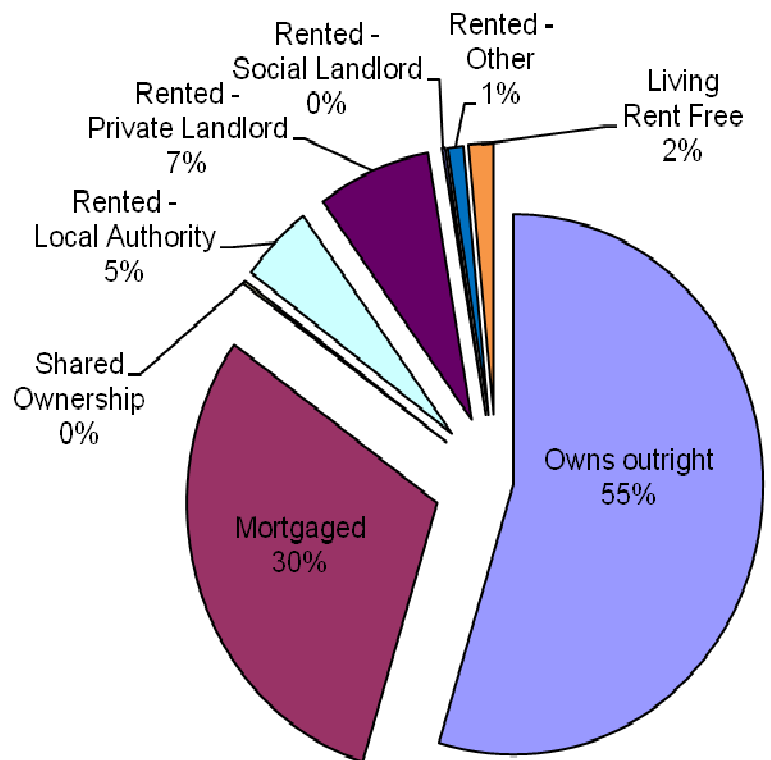
HOUSING

The area's housing consists mostly of detached houses and a lower proportion of flat/maisonette or apartments in comparison to the number of semi-detached and terraced housing. The ward consists of 55 local authority owned properties and 2 Housing Association properties.

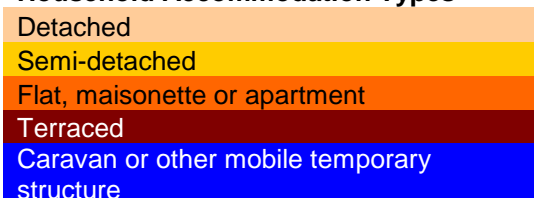
Household Accommodation Types



Household Accommodation Types	%
Detached	58.7
Semi-detached	24.6
Flat, maisonette or apartment	2.5
Terraced	11.6
Caravan or other mobile temporary structure	2.7



Household Accommodation Types



SOCIO-ECONOMIC CHARACTERISTICS

- ⇒ The estimated median household income for St. Ishmael, based on CACI's 2018 'PayCheck' data, is £30,514 which is the 10th highest (of 58 wards) in Carmarthenshire and 16.5% above the Carmarthenshire median of £25,488.
- ⇒ The social profile information indicates a higher than average level of people in higher/lower managerial and professional administrative occupations (Levels 1-2) and a lower than average number of people in lower supervisory and technical occupations and semi/routine occupations (Levels 5-7) than the average.

Social Profile	St. Ishmael	%	Carmarthenshire %
<i>All people aged 16-74 in households</i>	1974	100	100
1: Higher Managerial & Professional Admin. Occupations	418	21.2	13.8
2: Lower Managerial & Professional Admin. Occupations	505	25.6	19.9
3: Intermediate Occupations	233	11.8	11.6
4: Small Employers & Own Account Workers	360	18.2	12.6
5: Lower Supervisory & Technical Occupations	108	5.5	7.6
6: Semi-routine Occupations	241	12.2	16.7
7: Routine Occupations	152	7.7	13.0
8: Never Worked & Long Term Unemployed	54	2.7	4.9

Source: 2011 Census, ONS

ECONOMY AND LABOUR MARKET

Benefit Claimants	St. Ishmael	Rate %	Carmarthenshire Working Population %
Unemployment Benefit (JSA): November 2018	5	0.3	1.4
Incapacity Benefits (ESA/IB/SDA) May 2018	85	5.7	9.0
Income Support: May 2018	15	1.0	1.5
Disability Living Allowance: May 2018	85	5.7	6.2
Pension Credit: May 2018 (Population 65+)	75	9.1	15.3
State Pension Claimants: May 2018	880	-	-

Source: Jobcentre Plus administrative system Dept. for Work & Pensions

Economic Status (people aged 16-74)	St. Ishmael	St. Ishmael %	Carmarthenshire %
Economically Active	1293	65.6	64.9
Employees: Part-time	246	12.5	13.9
Employees: Full-time	639	32.4	33.7
Self-employed	324	16.4	11.0
Unemployed	39	2.0	3.7
Full-time Student	45	2.3	2.5
Economically Inactive	681	34.4	35.1
Retired	446	22.6	18.1
Student	68	3.4	4.5
Looking after home/family	48	2.4	3.8
Permanently sick/disabled	93	4.7	6.8
Other	26	1.3	1.9

Source: 2011 Census, ONS

WELSH INDEX OF MULTIPLE DEPRIVATION (WIMD)

WIMD 2014 based on fine-grained geography of lower Super Output Areas (LSOAs). The WIMD 2014 is compiled from eight domains, Income, Employment, Health, Education, Housing, Access to Services, Physical Environment and Community Safety and is published at Lower Super Output Area of which there are 112 in Carmarthenshire.

Under WIMD, where Rank 1 is the most deprived, **St. Ishmael 1** ranks 108 in Carmarthenshire from 112 LSOAs (one of the least deprived areas) and is ranked 1545 in Wales from 1909 LSOAs. **St. Ishmael 2** ranks 48 in Carmarthenshire and is ranked 837 from 1909 LSOAs in Wales.

The highest level of deprivation attributed to **St. Ishmael 1** is the Access to Services domain, being ranked 26th in Carmarthenshire and 189th in Wales for this domain. In **St. Ishmael 2** the Access to Services domain is also the most prominent ranking 10th in Carmarthenshire and 50th in Wales.

St. Ishmael 1 – Llandyfaelog, Croesyceilog, St. Ishmael 2 – Llansaint.

LSOA	Overall Index		Income		Employment		Health		Education		Access to Services		Community Safety		Physical Environment		Housing	
	Rank	Wales	Rank	Wales	Rank	Wales	Rank	Wales	Rank	Wales	Rank	Wales	Rank	Wales	Rank	Wales	Rank	Wales
St Ishmael 1	1545	108	1590	105	1679	111	1426	101	1661	109	189	26	1909	112	1193	75	1495	93
St Ishmael 2	837	48	1191	78	1061	70	676	39	1383	89	50	10	1443	68	763	45	972	53

Source: Welsh Index of Multiple Deprivation 2014 (updated August 2016), Welsh Assembly Government.

Note: LSOAs ranked 1-112 (Carmarthenshire), 1-1909 (Wales).

CRIME

St Ishmael	Offence Group												Annual Total					
	Arson & Criminal Damage	Burglary – Business & Community	Burglary – Residential	Drug Offences	Miscellaneous Crime Against Society	Possession of Weapons	Public Order Offences	Robbery	Sexual Offences	Theft	Vehicle Offences	Violence Against the Person						
Fiscal Year (1st April to 31st March)																		
2017/2018	10	6	4	4	3	1	1	0	2	17	1	32	81					

Source: Dyfed Powys Police, Headquarters, Llangunnor.

For further information please contact:

Lesley Rees, Policy & Research Officer

01267 224462

llrees@carmarthenshire.gov.uk