

## TYISHA WARD: ELECTORAL DIVISION PROFILE

Policy Research and Information Section, Carmarthenshire County Council, January 2019

**Councillors (Electoral Vote 2017 – Turnout = 38.42%):** Suzy Curry and Andre McPherson (Labour)

**Electorate (December 2018):** 2,555

**Population:** 4,149 (2017 Mid Year Population Estimates, ONS)

**Welsh Assembly and UK Parliamentary Constituency:** Llanelli

**Council owned Facilities:** St. Paul's Care Home & Day Centre, Copperworks Infants School, Lakefield C.P. School, Bigyn C.P. School, St. Pauls Graveyard, Great Western Crescent Car Park, Dewi Sant Play Centre.



© Hawlfraint y Goron a hawliau cronfa ddata 2017 Arolwg Ordnans 100023377  
© Crown copyright and database rights 2017 Ordnance Survey 100023377

**Location: Approximately 35km from Carmarthen Town**

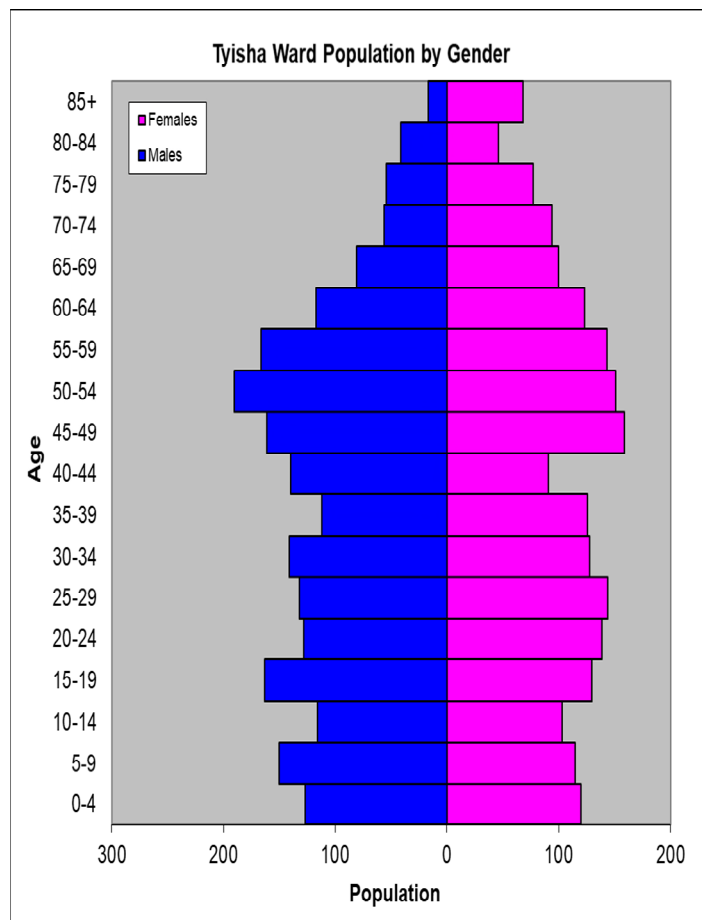
- ⇒ Area: 0.63km<sup>2</sup>
- ⇒ Population Density: 6,586 people per km<sup>2</sup>
- ⇒ Population Change: 2011-2017: +70 (+1.7%)
- ⇒ Major Employers: Carmarthenshire County Council (schools and leisure)

## POPULATION STATISTICS

### 2017 Mid Year Population Estimates

Age Structure	Tyisha Population	Tyisha %	Carmarthenshire %
Aged: 0-4	247	6.0	5.2
5-14	484	11.7	11.4
15-24	560	13.5	10.5
25-44	1,014	24.4	21.6
45-64	1,210	29.2	28.0
65-74	331	8.0	13.0
75+	303	7.3	10.3
<b>Total</b>	<b>4,149</b>	<b>100</b>	<b>100</b>

Source: aggregated lower Super Output Area (LSOA) Small Area Population Estimates, 2017, Office for National Statistics (ONS)



- ⇒ 14<sup>th</sup> highest ward population in Carmarthenshire, and highest population density in the county.
- ⇒ Highest proportion of people aged 45-64, proportion aged 75+ is 1.9% lower than the Carmarthenshire Average.
- ⇒ Higher proportion of people with no qualifications
- ⇒ Lower than average proportion of Welsh Speakers

## 2011 Census Data

Population: Key Facts	Tyisha	Tyisha %	Carmarthenshire
People: born in Wales	3107	76.2	76.0
born outside UK	462	11.4	4.1
in non-white ethnic groups	136	3.2	1.9
with limiting long-term illness	1113	27.3	25.4
with no qualifications (aged 16-74)	1132	34.1	26.8
with higher level qualifications (aged 16-74)	417	12.6	23.9
able to speak Welsh	842	21.5	43.9

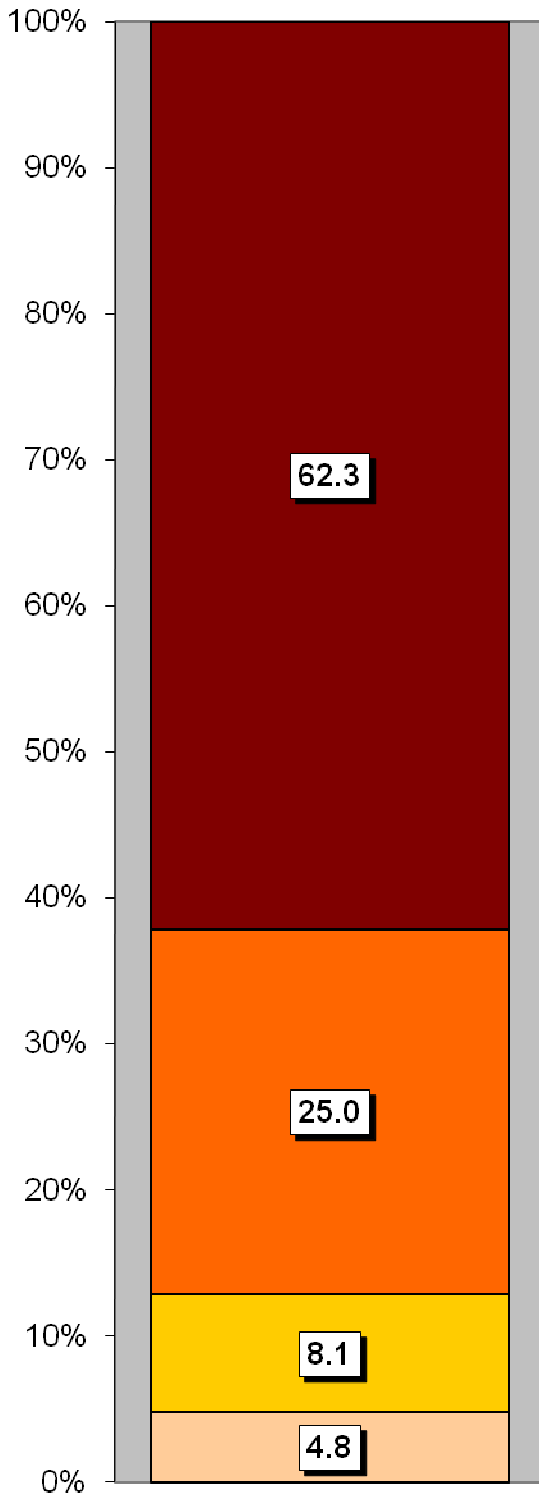
Household Composition	Tyisha	Tyisha %	Carmarthenshire
<b>Total Households/</b> (Average Household Size)	1928	(2.1)	(2.3)
Household Type: one person: pensioner	291	15.1	14.8
one person: other	507	26.3	15.4
one family: all pensioners	78	4.0	9.8
one family: married couple	429	22.3	34.1
one family: cohabiting couple	177	9.2	8.7
one family: lone parent	292	15.2	11.3
one family: other	154	8.0	5.9

Source: 2011 Census, ONS

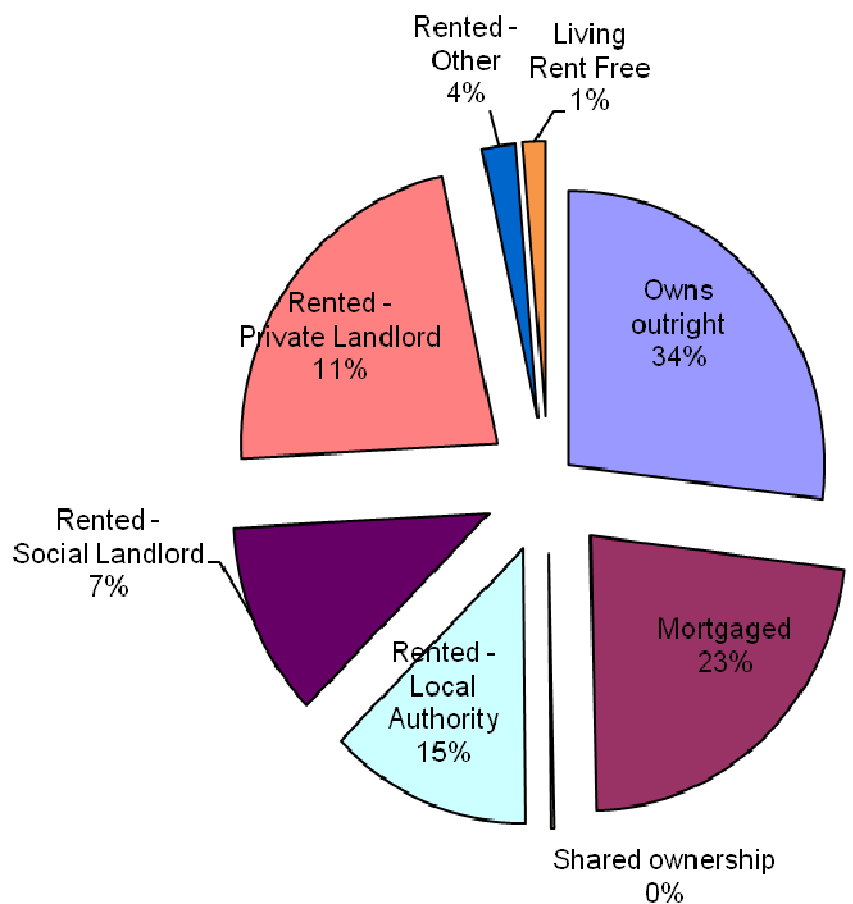
## HOUSING

The area's housing consists mostly of terraced houses and 25% flats/maisonette/apartments in comparison to the low number of detached and semi-detached houses. The ward consists of 247 local authority owned properties and 221 Housing Association properties.

### Household Accommodation Types



Household Tenure	%
Owns outright	27.0
Mortgaged	22.7
Shared ownership	0.2
Rented - Local Authority	12.8
Rented - Social Landlord	11.5
Rented - Private Landlord	22.4
Rented - Other	2.1
Living Rent Free	1.4



### Household Accommodation Types

- Detached
- Semi-detached
- Flat, maisonette or apartment
- Terraced
- Caravan or other mobile temporary structure

## SOCIO-ECONOMIC CHARACTERISTICS

- ⇒ The estimated median household income for Tyisha, based on CACI's 2018 'PayCheck' data, is £17,891 which is the lowest (of 58 wards) in Carmarthenshire and 42.5% below the Carmarthenshire median of £25,488.
- ⇒ The social profile information indicates a higher than average level of people who have never worked and long term unemployed (Level 8) and a lower than average number of people in higher/lower managerial and professional administrative occupations (Levels 1-2).

Social Profile	Tyisha	%	Carmarthenshire %
<i>All people aged 16-74 in households</i>	2997	100	100
<b>1: Higher Managerial &amp; Professional Admin. Occupations</b>	214	7.2	13.8
<b>2: Lower Managerial &amp; Professional Admin. Occupations</b>	360	12.0	19.9
<b>3: Intermediate Occupations</b>	257	8.6	11.6
<b>4: Small Employers &amp; Own Account Workers</b>	173	5.8	12.6
<b>5: Lower Supervisory &amp; Technical Occupations</b>	272	9.1	7.6
<b>6: Semi-routine Occupations</b>	733	24.5	16.7
<b>7: Routine Occupations</b>	598	20.0	13.0
<b>8: Never Worked &amp; Long Term Unemployed</b>	293	9.8	4.9

Source: 2011 Census, ONS

## ECONOMY AND LABOUR MARKET

Benefit Claimants	Tyisha	Rate %	Carmarthenshire Working Population %
Unemployment Benefit (JSA): November 2018	100	3.7	1.4
Incapacity Benefits (ESA/IB/SDA) May 2018	455	16.9	9.0
Income Support: May 2018	60	2.2	1.5
Disability Living Allowance: May 2018	190	7.0	6.2
Pension Credit: May 2018 (Population 65+)	180	28.3	15.3
State Pension Claimants: May 2018	650	-	-

Source: Jobcentre Plus administrative system Dept. for Work & Pensions

Economic Status (people aged 16-74)	Tyisha	Tyisha %	Carmarthenshire %
<b>Economically Active</b>	1901	63.4	64.9
Employees: Part-time	453	15.1	13.9
Employees: Full-time	1022	34.1	33.7
Self-employed	125	4.2	11.0
Unemployed	226	7.5	3.7
Full-time Student	75	2.5	2.5
<b>Economically Inactive</b>	1096	36.5	35.1
Retired	376	12.5	18.1
Student	131	4.4	4.5
Looking after home/family	156	5.2	3.8
Permanently sick/disabled	333	11.1	6.8
Other	100	3.3	1.9

Source: 2011 Census, ONS

## WELSH INDEX OF MULTIPLE DEPRIVATION (WIMD)

WIMD 2014 based on fine-grained geography of lower Super Output Areas (LSOAs). The WIMD 2014 is compiled from eight domains, Income, Employment, Health, Education, Housing, Access to Services, Physical Environment and Community Safety and is published at Lower Super Output Area of which there are 112 in Carmarthenshire.

Under WIMD, where Rank 1 is the most deprived, **Tyisha 1** ranks as the 20<sup>th</sup> most deprived area in Carmarthenshire from 112 LSOAs and is ranked 505 in Wales from 1909 LSOAs. **Tyisha 2** ranks as the most deprived area in Carmarthenshire and is ranked 55<sup>th</sup> from 1909 LSOAs in Wales, whilst **Tyisha 3** ranks as the 5<sup>th</sup> most deprived area in Carmarthenshire and is ranked 187 from 1909 LSOAs in Wales.

The highest level of deprivation attributed to **Tyisha 1** is the Community Safety domain, being ranked 7<sup>th</sup> in Carmarthenshire and 156<sup>th</sup> in Wales for this domain. In **Tyisha 2** the Community Safety, Employment and Health domains are the most prominent, ranking 1<sup>st</sup> in Carmarthenshire and 17<sup>th</sup>, 28<sup>th</sup>, and 64<sup>th</sup> respectively in Wales. In **Tyisha 3** the Employment domain is the most prominent, ranking 3<sup>rd</sup> in Carmarthenshire and 137<sup>th</sup> in Wales.

### Tyisha 1 - Lakefield

### Tyisha 2 – Ann Street

### Tyisha 3 – St Pauls

LSOA	Overall Index		Income		Employment		Health		Education		Access to Services		Community Safety		Physical Environment		Housing	
	Rank	Score	Rank	Score	Rank	Score	Rank	Score	Rank	Score	Rank	Score	Rank	Score	Rank	Score	Rank	Score
Tyisha 1	505	20	710	33	544	26	475	26	383	12	1769	109	156	7	202	9	447	15
Tyisha 2	55	1	114	2	28	1	64	1	115	2	1503	99	17	1	300	17	238	6
Tyisha 3	187	5	193	4	137	3	390	14	306	10	1304	94	40	4	228	12	497	19

Source: Welsh Index of Multiple Deprivation 2011 (updated August 2016), Welsh Assembly Government.

Note: LSOAs ranked 1-112 (Carmarthenshire), 1-1909 (Wales).

## CRIME

Tyisha	Offence Group												Annual Total
	Arson & Criminal Damage	Burglary – Business & Community	Burglary – Residential	Drug Offences	Miscellaneous Crime Against Society	Possession of Weapons	Public Order Offences	Robbery	Sexual Offences	Theft	Vehicle Offences	Violence Against the Person	
<b>2017/2018</b>	107	36	14	32	12	5	42	2	18	144	30	240	<b>682</b>

Source: Dyfed Powys Police, Headquarters, Llangunnon.

#### For further information please contact:

Lesley Rees, Policy & Research Officer

01267 224462

llrees@carmarthenshire.gov.uk