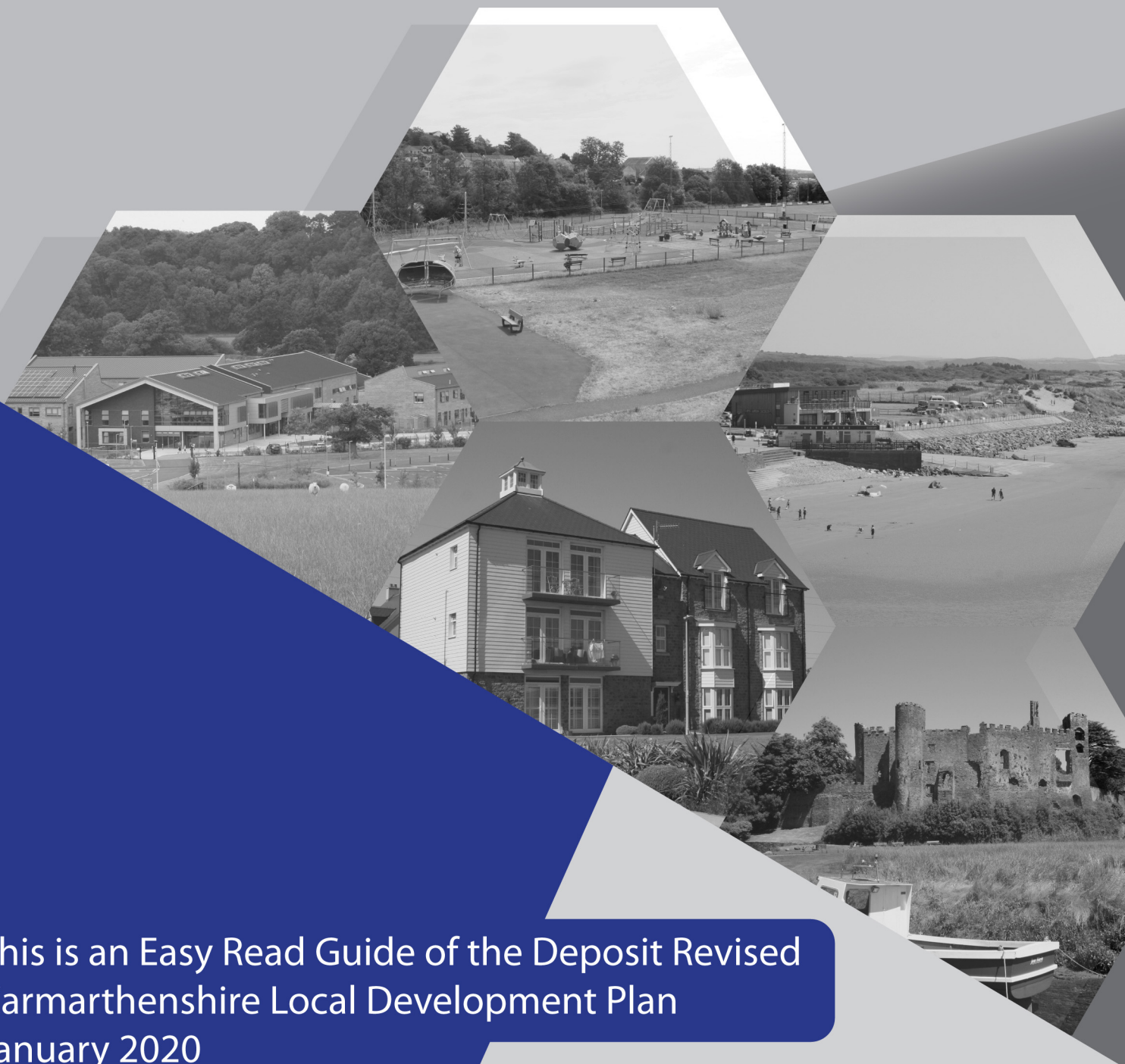


Carmarthenshire 2018-2033



What we need to think about in planning new homes, jobs and the environment in Carmarthenshire.



This is an Easy Read Guide of the Deposit Revised
Carmarthenshire Local Development Plan
January 2020

You can find out more and read to full plan on our website
www.carmarthenshire.gov.uk

How to use this document



This is an easy read version.

The words and their meaning are easy to read and understand. You may need support to read and understand this document. Ask someone you know to help you.



Some words may be hard to understand. These are in **bold blue writing** and have been explained in a box beneath the word.

Where the document says we, this means Carmarthenshire County Council.



Where the document says the Plan, this means the Revised Local Development Plan.

For more information contact:



Address: Forward Planning Section,
Carmarthenshire County Council,
3 Spilman Street, Carmarthen,
Carmarthenshire,
SA31 1LE



Tel: 01267 228818

Website: www.carmarthenshire.gov.uk

Please tell us your comments on the Carmarthenshire Revised Local Development Plan by the 13th March 2020.



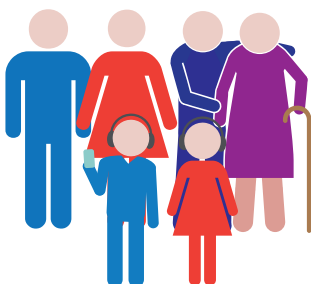
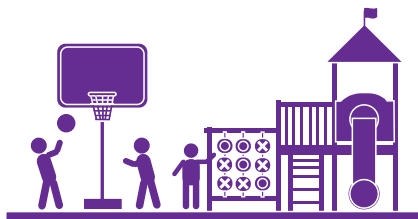
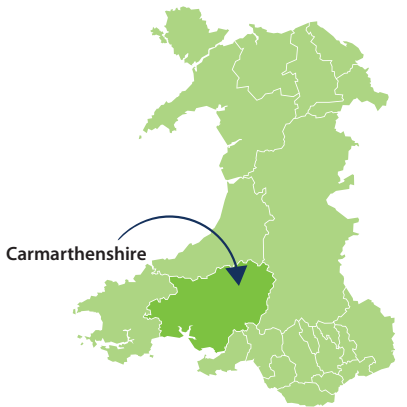
Introduction

Carmarthenshire County Council has written its Local Development Plan.

We want Carmarthenshire to be the best place it can be. A great place for people to live, learn, shop, work, play, enjoy and visit both now and in the future.

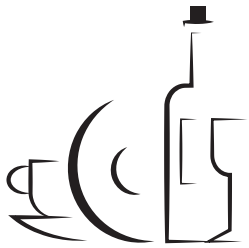
The Plan looks at and says how the County will look and grow in the next 15 years.

We need to think about where people live and will live, and what they need to live good and happy lives. For example:



- Homes,
- Jobs,
- Roads,
- Transport,
- **Environment** and Countryside,
- Water supplies,
- Energy,
- Places to play and enjoy,
- Places to learn,
- Health care,
- Climate.

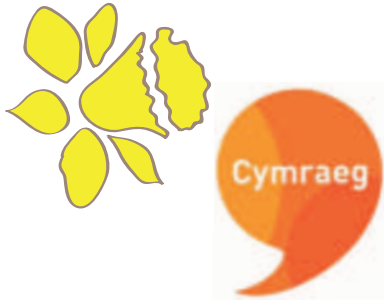
The **environment** is where we live. It is the land, the sea, the air, and everything that lives in and on it. For example plants, animals and fish.



How we can grow and change to make our places great. So we can:

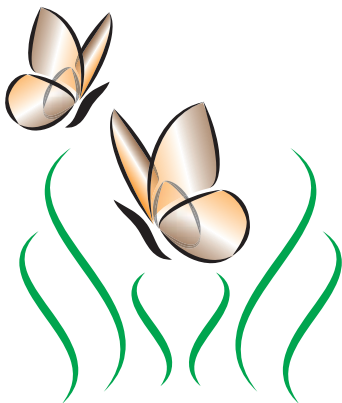


- Grow our towns and communities, have good homes with jobs and services.
- Have strong business and employment.
- Give young people reasons to stay living in, and return to Carmarthenshire.
- Face up to climate change
- Make use of clean energy
- Support communities in the countryside
- Support the use of the Welsh language.
- To look after **natural resources**. To have less **pollution**.



Natural resources are things like wind, the sun, coal and iron. They come from nature and we can use them for things like energy, power and food.

Pollution is when anything that harms the environment is let off.



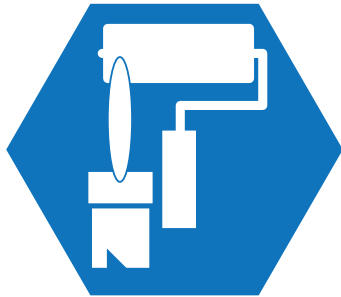
- Strong and valued animal and plant life.

Growing Carmarthenshire



The Plan says where these new homes can be built and where new employment should be provided.

We understand that parts of Carmarthenshire have different needs and have split it into 6 clusters.



We want to focus new homes and jobs in towns and villages which can accommodate them whilst also supporting our communities.



Most of the growth will go to the 3 main settlements where people already live and where some of our key services (including hospitals, shops and larger schools) are located :

- Llanelli
- Ammanford/Cross Hands
- Carmarthen



We know that we need to build more homes before 2033 and that the demand for housing is as follows:

- More than 8,800 new homes
- This includes more than 1,500 homes that people can afford
- These homes should be in areas that already have houses





The Plan supports providing over 5,000 new jobs.

Allow for over 77 hectares of land for new employment to be built.



We need to get and keep people of working age living in the countryside. This will help us keep and grow services.



Protect and promote the Welsh language.

Make our town centres places for people to visit for shopping and leisure.



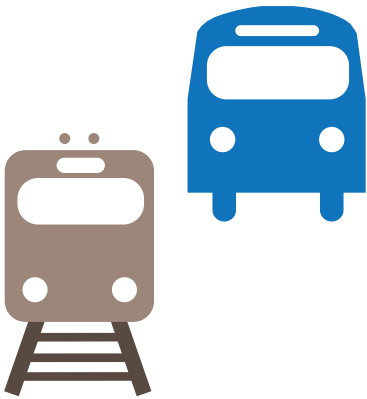
Supports high quality tourism and visitor attractions.

How we Plan for the growth



We want places to be healthy where people can do well and live happy lives.

Places must be well planned and can access services.



People should be able to access transport other than the car - walk, cycle or use public transport

Homes and businesses can get access to important services, including good internet access.

There should be good social spaces, meeting places and **green spaces**.



Green spaces are areas of open land.



We know that many of our settlements by rivers or the sea. We must think about flooding when planning for the future.

Good planning is important in making all this happen. We have written policies to help us manage growth and change well.



We want to encourage clean energy vehicles like electric cars and include places to charge electric cars. These give off fewer gasses that are harmful to the **environment**.



We want to:

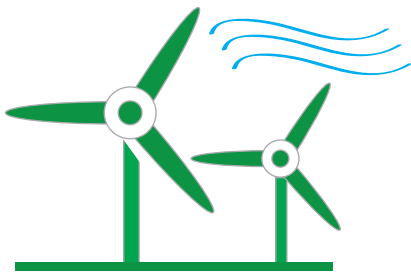
- protect plants and animals
- make our **environment** stronger
- protect important places.

The **environment** is where we live. It is the land, the sea, the air, and everything that lives in and on it. For example plants, animals and fish.



We are interested in all types of clean energy that can help us meet our future needs.

- Sun farms use solar panels to make energy from the sun.



- Wind farms use large wind machines to make energy from the wind.

There are clear rules about this.

Want to share your views



You can tell us what you think through our website at www.carmarthenshire.gov.uk

Or, by using a downloadable form.

Please tell us your comments on the Carmarthenshire Revised Local Development Plan by the 13th March 2020.