



The **Carmarthenshire Nature Partnership** has produced this profile to highlight some of the wildlife, habitats, and important sites in your local area.

Carmarthenshire is justly celebrated for the variety within its natural environment, from the uplands in the north-east of the county to our magnificent coastline.

Every ward contributes to the rich and varied network of wildlife habitats that make up the county, whether that be woodlands, grasslands hedgerows, rivers or gardens.

There are still gaps in our knowledge about Carmarthenshire's natural environment and the wildlife it supports. Despite having a wealth of data, some species and pockets of special habitats remain unrecorded and

unmapped. There is always more to find out.

Wildlife and our natural environment reflect local culture and past human activity. We see this in the field and hedgerow patterns in our agricultural landscapes, and in areas previously dominated by industry where, today, new habitats develop on abandoned land. And our farm, house and street names provide clues to the history of our natural environment.

The mosaic of habitats in Llangadog make up an **ecological network**. If these habitats are well managed, are well connected and are sufficiently extensive, they will support a diversity of species and help to make a **resilient** natural environment.

A **resilient** natural environment supports wildlife and provides a range of **ecosystem services**, e.g. agricultural products, pollinators, timber, drinking water, regulation of floods and soil erosion, carbon storage and recreation and inspiration. Find out more at:

<https://bit.ly/3U12Nvp>

We hope it you will find this profile interesting and that it might encourage you to explore your local area and record what you see. There are links in the profile that will help you to find out more and take action locally.

Thank you to all those in Llangadog who have already sent information and photos. These profiles can be updated so please continue to send us information about the Wildlife in your Ward'.

Funded by Welsh Government through the Local Nature Partnership Cymru project.

Produced by Carmarthenshire County Council for the Carmarthenshire Nature Partnership

For further information please contact: Biodiversity@carmarthenshire.gov.uk



Stretching east from the Tywi Valley, with its meandering river, floodplain grasslands and shingle banks, up into the Brecon Beacons National Park, the Black Mountain exerts a strong psychological pull over this large ward. The more lowland areas are characterised by mosaics of sheep- and cattle-grazed pastures with patches of species-rich wet and dry grassland and wetland fen meadows and flush habitats. There are also extensive conifer plantations, fringed by smaller pockets of deciduous woodland which run along stream valleys running up into the open uplands of the Black Mountain and Mynydd Myddfai. Here areas of blanket bog, heathland, upland grassland, wet flushes and rocky outcrops influenced by the local geology make this a rich natural environment.

Rare and unusual plants can still be found around Myddfai, Llanddeusant and Llyn y Fan Fach, land long associated with the medieval Physicians of Myddfai whose 'recipes' for treating medical conditions can be found in the Red Book of Hergest, one of the most important medieval manuscripts written in Welsh.

From the Carreg Sawdde Common on the edge of the drovers town of Llangadog up to the slopes of the Black Mountain, this ward has some of the best grassland fungi sites in the county.

Special species in your ward



All the species in your ward are important in some way and help make your natural environment special. Some of the species recorded in Llangadog are listed by Welsh Government as being of principal importance for biodiversity in Wales – so your area is important. Here are some species highlights from your ward.



Your wards have a number of records for grassland fungi. These include waxcaps often brightly-coloured mushrooms with a waxy or shiny-looking cap. They are found in grasslands that are generally poor in nutrients – such as old pasture, lawns and cemeteries. Wales is very important for these grassland fungi.



The distinctive white little egret was once a rare visitor to the UK but can now be regularly spotted around the coastline and wetlands of the county. Their range is expanding, possibly due to increasing temperatures caused by climate change. It first bred in Wales in 2002.



Sixty-five species of caddis fly have been recorded in Llangadog. These will be a vital food source for the important but threatened salmon and trout populations also dippers. They are an indicator of river health. The larvae make cases of stone, sand and leaves to pupate in.



Otter numbers have recovered from a serious decline and are now recorded on watercourses and linked habitats in your ward. Today road traffic accidents are one of the main causes of death and a lack of suitable isolated breeding sites may limit breeding success, so they are still vulnerable.



Kestrels are now a scarce resident breeder occurring extremely locally throughout the county in open 'rough' habitats, which supports its small mammal prey. There are a number of records in your ward. They nest in holes in trees so a Kestrel box can really help.

How can you help?

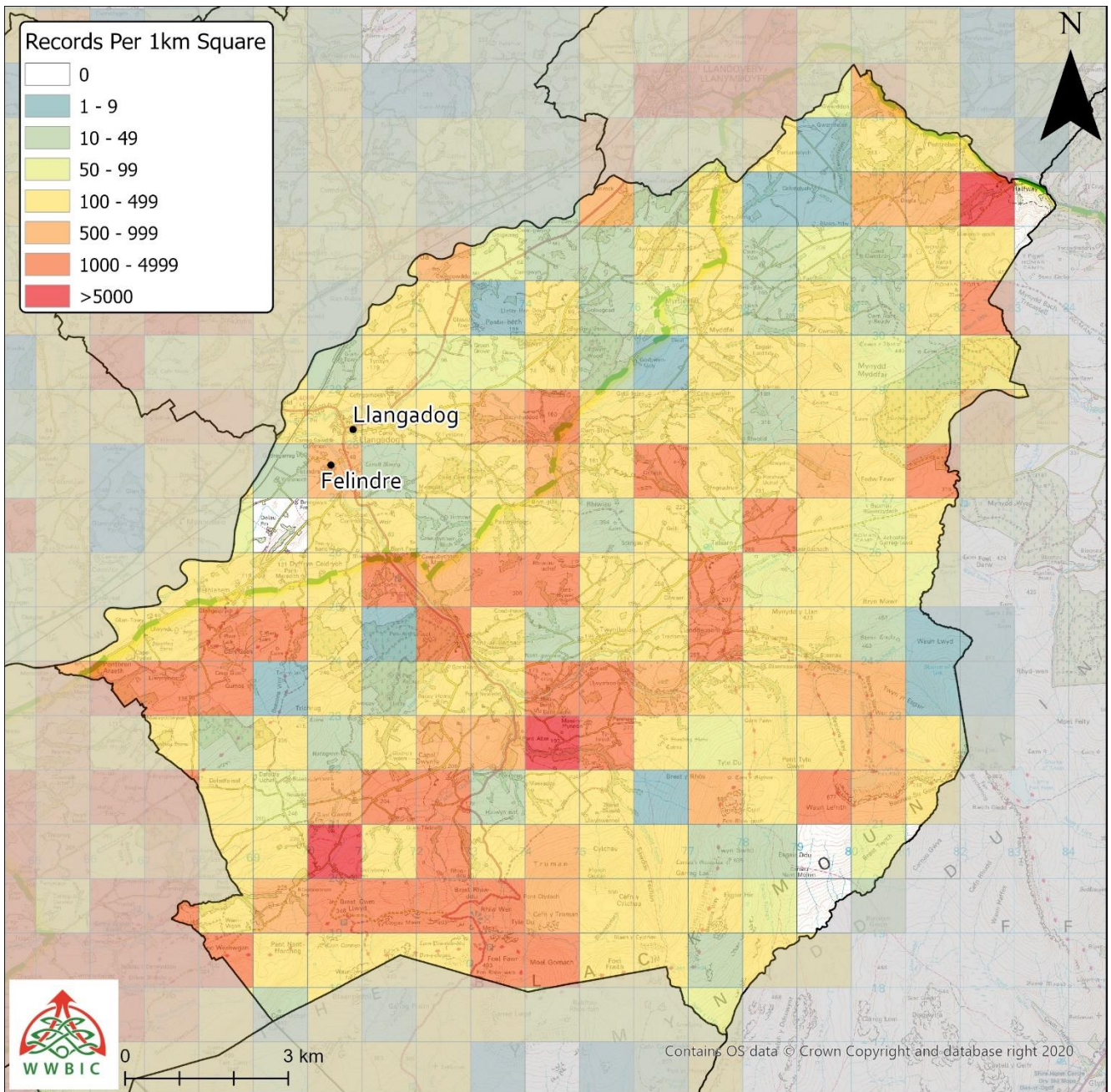
If we want to protect the wildlife in in Llangadog, help from people who live here can make a real difference. There are many groups and individuals recording their local wildlife and managing areas for Nature in the county.

- Llangadog has the greatest number of individual species records for any ward in the county – including over 100 species of spider.
- Why not visit the Council's biodiversity web pages and the section on priority habitats and species in the county: <https://bit.ly/3gsZgyP>
- Discover what is in your area – take a closer look at what is around you – let us know. It's amazing!
- Manage areas in your local school, village and gardens for wildlife – make space for Nature.
- Get involved with a local conservation group – volunteer some of your time for Nature.
- For a range of ideas visit: <https://bit.ly/2EENrZ6>

Useful links:

- Carmarthenshire biodiversity web pages: <https://bit.ly/3jb2Krl>
- Carmarthenshire Nature Recovery Plan: <https://bit.ly/2QqmfOe>
- Wales Biodiversity Partnership: <https://www.biodiversitywales.org.uk/Home>





Help record the species in your area

West Wales Biodiversity Information Centre (WWBIC) is a valuable source of information about the county's wildlife, and anyone can contribute. Common species are often under-recorded, so you don't need to be an expert.

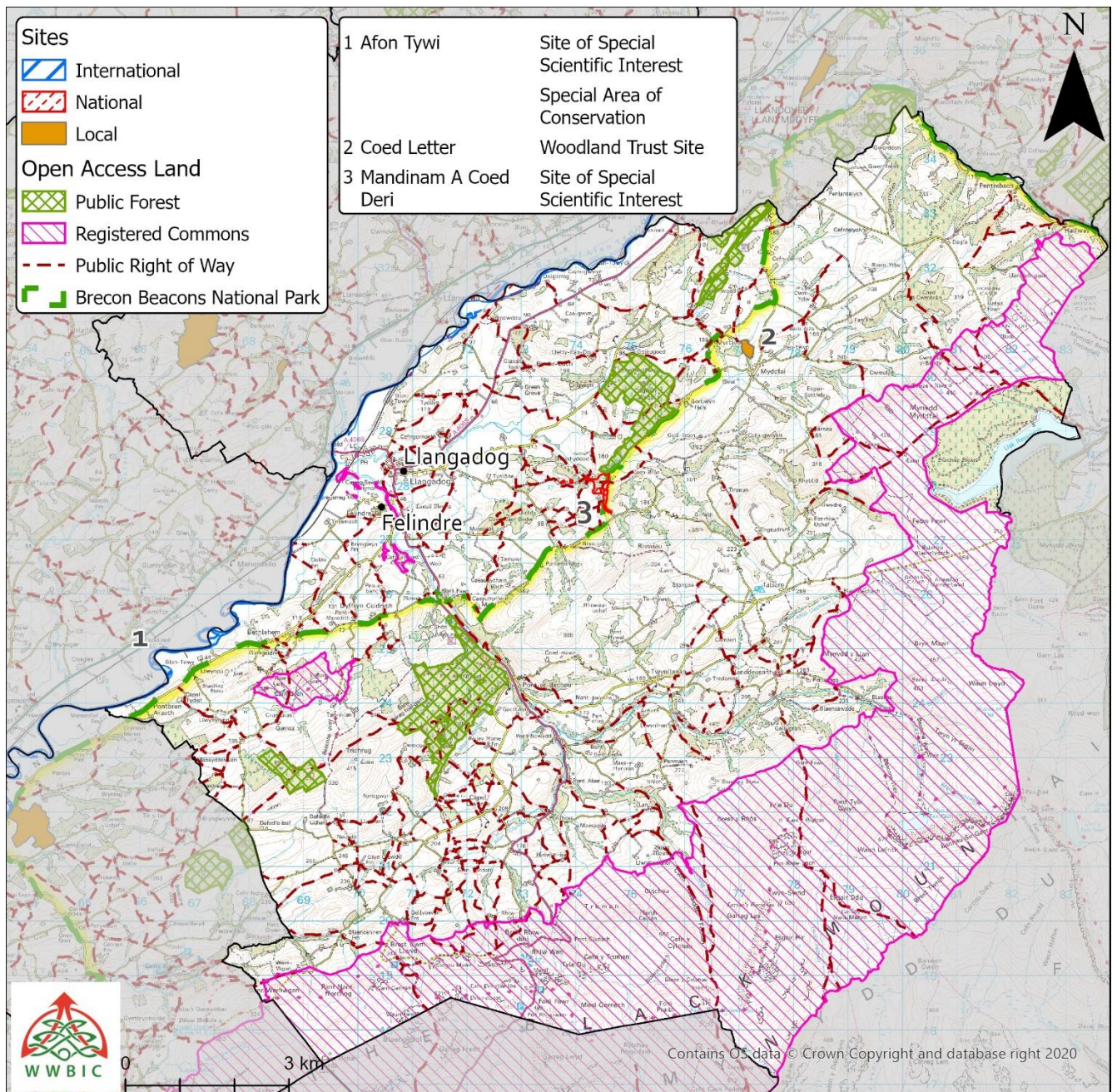
WWBIC holds a lot of biological records for Llangadog (see the map above) but there are three 1-km square with 0 records and 10 with less than 10 species records. Can you help fill in the gaps?

Why not record the species that you see in your garden or when you are out and about? There are several ways you can record with WWBIC, by email, on the WWBIC website or using the LERC Wales App. More information can be found here: <https://www.wwbic.org.uk/wildlife-recording/>

There are many websites that can help with species identification. If you are on social media why not join West Wales Biological Recording (<http://www.facebook.com/groups/westwalesbiorecording/>)



Special sites in your area



This map highlights the special sites for wildlife in your ward and also places to walk and visit in Llangadog.

➤ In Carmarthenshire we have a network of 'designated' sites, protected at a national or international level – these are the best examples of particular habitats in Carmarthenshire or even the UK and/or places where important species live. They are the cornerstones of conservation work, protecting the core of our natural heritage.

Want to find out more? Visit the Natural Resources Wales website - <https://bit.ly/2YwEybo>.

NB. These protected sites do not necessarily have public access unless they have a Public Right of Way passing through them or are Open Access Land (see next page).

➤ Locally we also have nature reserves with important habitats and species which are managed by a range of organisations. Find out more at: <https://bit.ly/2LcLJkM>



➔ Your ward has a network of Public Rights of Way (PROW). These footpaths are open to everyone to enjoy and a great way for you to explore your local area and the habitats and wildlife within it. The county also has areas of 'Open Access land'.



➔ Open Access land', under the CRow Act (2000), consists of open country (mountain, moor and heath land) and 'registered common land. It also includes areas of 'dedicated land' where owners, such as Natural Resources Wales, allow free access.. In these areas you can walk wherever you like, and in the NRW managed forests you can also ride a horse or a bike on the forest tracks, but please be considerate of other users.

Find out more at: <https://bit.ly/3n2tahp>



➔ PROWs include Footpaths, Bridleways, Restricted Byways and Byways Open to All Traffic. There are over 2400 km of PROW across Carmarthenshire providing different levels of off road public access from walking to horse riding and cycling, each has its own unique character, you may already have your own favourite. Find out more at: <https://bit.ly/2K7k9VK>



➔ The maps in this profile are Ordnance Survey maps (OS) – they are a great way to help you find local Public Right of Way and Open Access Land either through paper maps or through their phone App. Find out more at: <https://bit.ly/2Wi52Mo>



➔ The County also boasts numerous designated cycle paths, many of which make up part of the National Cycle network and Carmarthenshire's Active Travel network. There is over 100 km of designated cycle path in the county. Find out more at: <https://bit.ly/3gQopVC> and <https://bit.ly/3gPcck8>



➔ When you are out and about - always follow the Countryside Code: <https://bit.ly/37hFjJS>

Local Walks/sites to explore

You may already have your own favourite walk in your patch, where you experience the seasonal changes throughout the year. You may walk the same route regularly, but wildlife will not. So, keep your eyes peeled there is always something new to see/experience. But why not try walking another way? You might see something different but also the same sights – just in a different way.

Please tell us about your favourite walk or place to visit - here are some ideas.

General

➔ There are four local **Ramblers** groups in Carmarthenshire that explore the county. Find out more about the Ramblers' groups in Carmarthenshire: <https://bit.ly/3r6xZZn>

➔ **Walking Well Carmarthenshire** is an initiative which aims to encourage people of all ages and abilities to take advantage of the physical, social and mental health benefits offered by walking in groups of like-minded people. It does this by setting up walking groups around the County. Find out more: <https://bit.ly/2J48FCc>

➔ The **Discover Carmarthenshire** website promotes local walk and cycle routes: <https://bit.ly/3r35xYi>

Some local suggestions:

- Black Mountain
- Garn Goch
- Usk Reservoir

Your Ward

These are some of the photos we have received from you.

