

## ST. ISHMAEL WARD: ELECTORAL DIVISION PROFILE

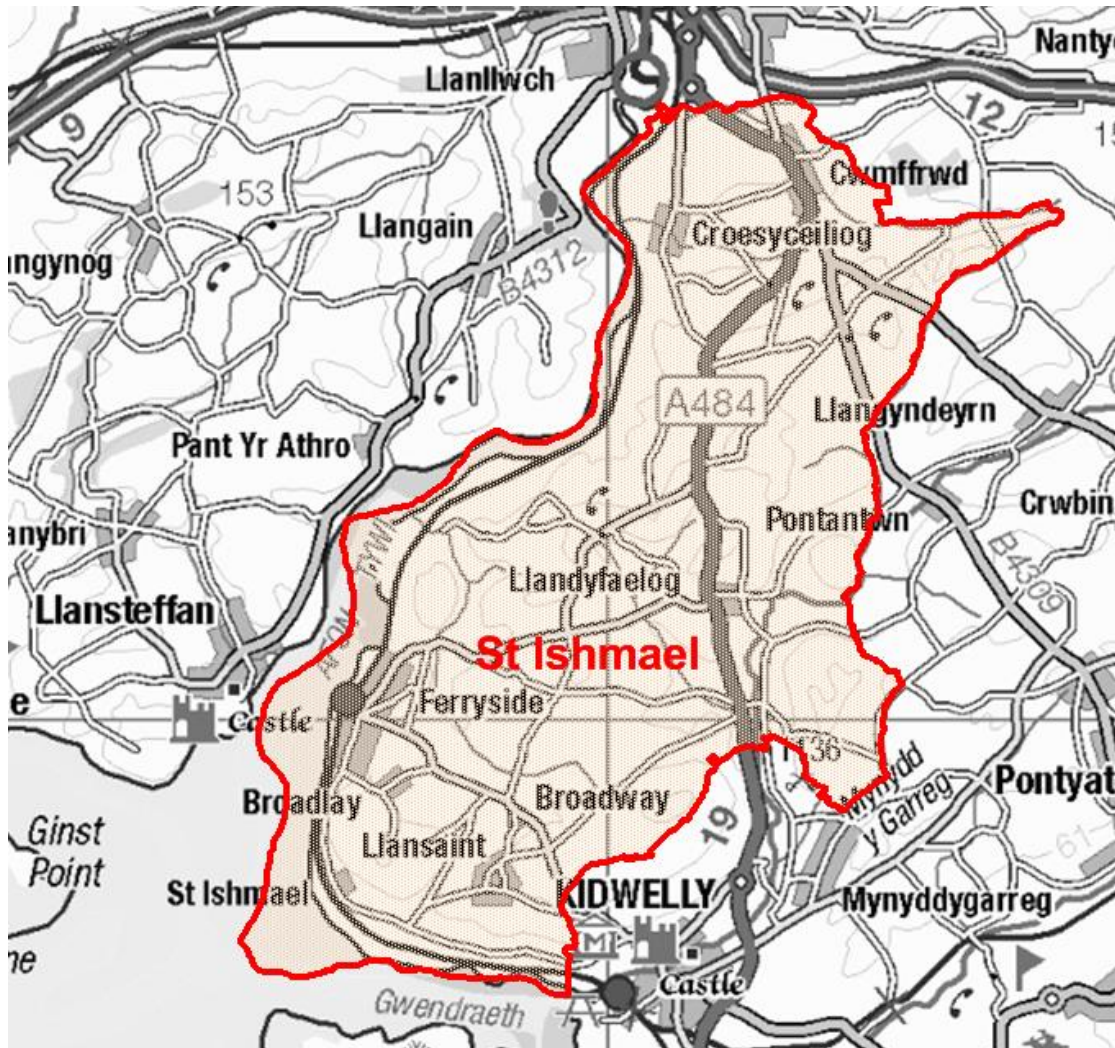
Policy Research and Information Section, Carmarthenshire County Council May 2021

**Councillors (Electoral Vote 2017):** Mair Stephens (Independent). Turnout = 53.29%

**Electorate (April 2021):** 2,332

**Population:** 2,695 (2019 Mid Year Population Estimates, ONS)

**Welsh Assembly and UK Parliamentary Constituency:** Carmarthenshire East & Dinefwr



© Hawlfraint y Goron a hawliau cronfa ddata 2017 Arolwg Ordnans 100023377

© Crown copyright and database rights 2017 Ordnance Survey 100023377

**Location: Approximately 18km from Carmarthen Town**

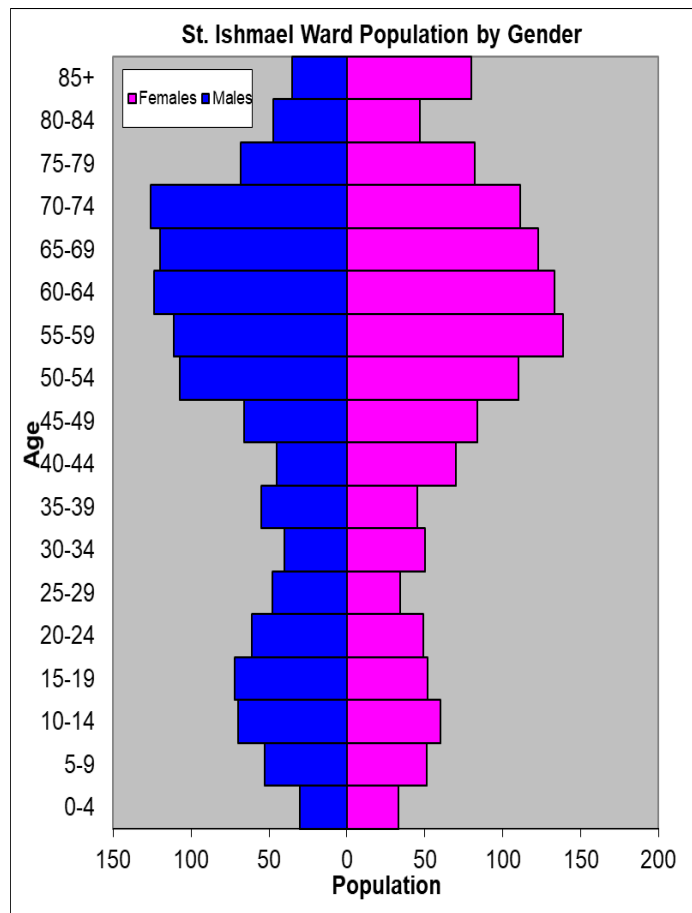
- ⇒ Area: 57.81km<sup>2</sup>
- ⇒ Population Density: 47 people per km<sup>2</sup>
- ⇒ Population Change: 2011-2019: +21 (+0.8%)

## POPULATION STATISTICS

### 2019 Mid Year Population Estimates

Age Structure	St. Ishmael Population	St. Ishmael %	Carmarthenshire %
Aged: 0-4	69	2.6	5.0
5-14	239	8.9	11.5
15-24	211	7.8	10.2
25-44	415	15.4	21.6
45-64	866	32.1	28.0
65-74	458	17.0	11.9
75+	437	16.2	11.9
<b>Total</b>	<b>2,695</b>	<b>100</b>	<b>100</b>

Source: aggregated lower Super Output Area (LSOA) Small Area Population Estimates, 2019, Office for National Statistics (ONS)



- ⇒ 24<sup>th</sup> lowest ward population in Carmarthenshire, and 23<sup>rd</sup> lowest population density.
- ⇒ Highest proportion of people aged over 45, proportion aged over 75 higher than the Carmarthenshire Average.
- ⇒ High proportion of people with higher level qualifications
- ⇒ Higher proportion of Welsh Speakers than the Carmarthenshire average.

## 2011 Census Data

Population: Key Facts	St. Ishmael	St. Ishmael %	Carmarthenshire
<b>People:</b> born in Wales	1895	70.9	76.0
born outside UK	85	3.1	4.1
in non-white ethnic groups	32	1.1	1.9
with limiting long-term illness	700	26.1	25.4
with no qualifications (aged 16-74)	493	21.4	26.8
with higher level qualifications (aged 16-74)	771	33.5	23.9
able to speak Welsh	1275	48.7	43.9

Household Composition	St. Ishmael	St. Ishmael %	Carmarthenshire
<b>Total Households/</b> (Average Household Size)	1158	(2.3)	(2.3)
Household Type: one person: pensioner	183	15.8	14.8
one person: other	151	13.0	15.4
one family: all pensioners	149	12.9	9.8
one family: married couple	465	40.1	34.1
one family: cohabiting couple	72	6.1	8.7
one family: lone parent	77	6.6	11.3
one family: other	61	5.2	5.9

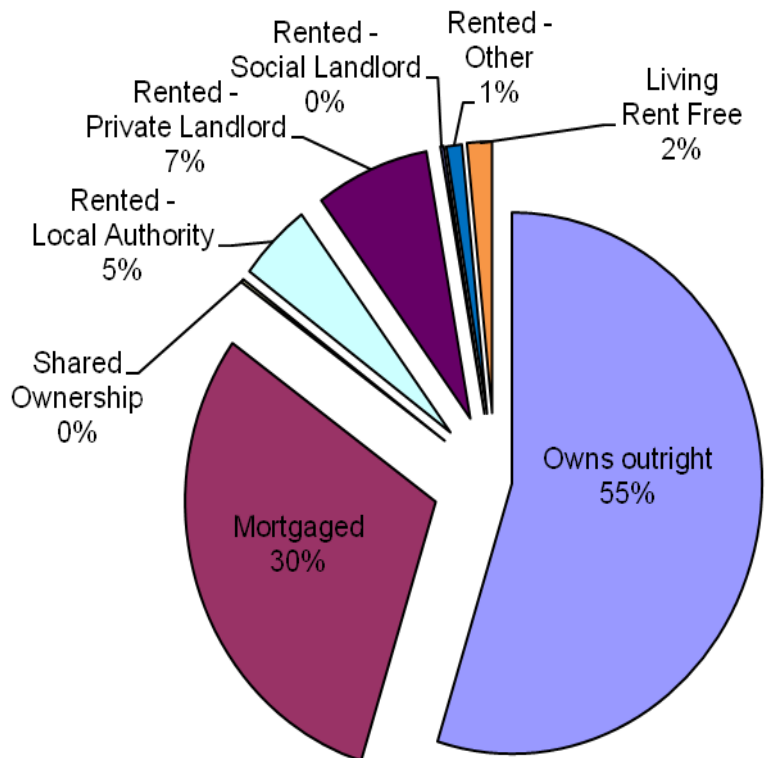
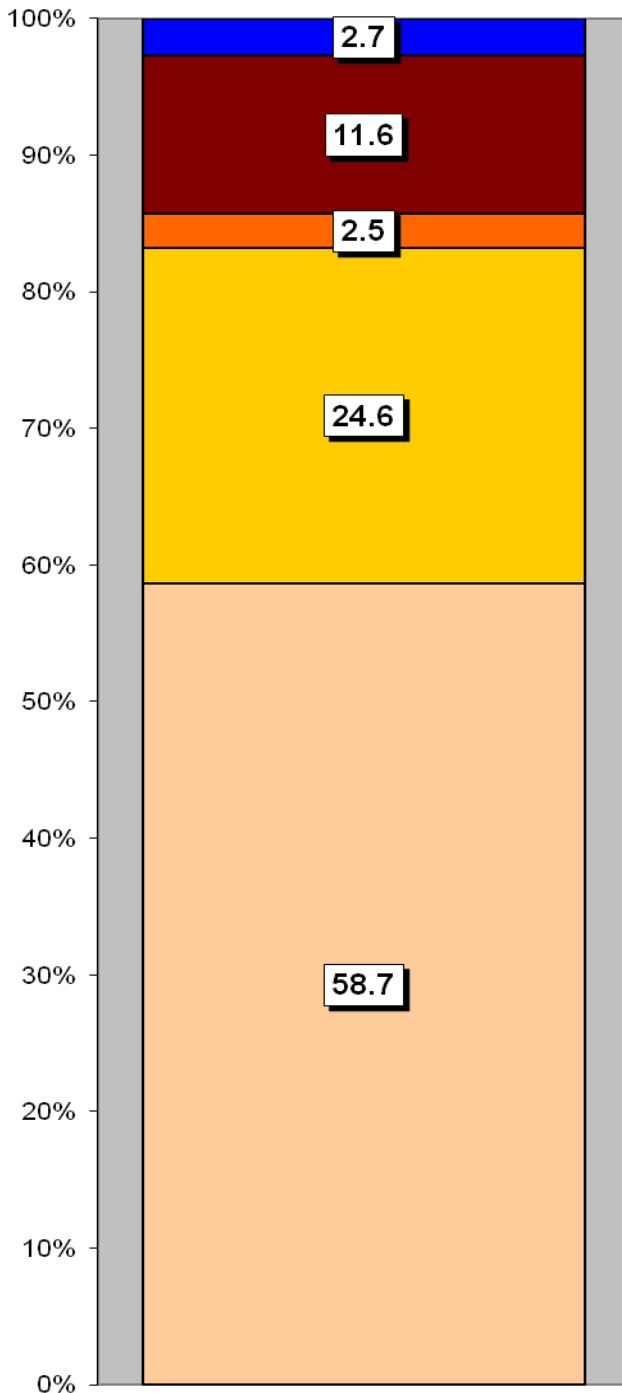
Source: 2011 Census, ONS

## HOUSING

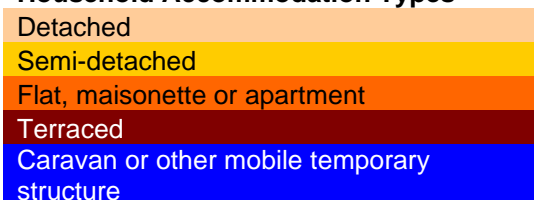
The area's housing consists mostly of detached houses and a lower proportion of flat/maisonette or apartments in comparison to the number of semi-detached and terraced housing. The ward consists of 55 local authority owned properties and 2 Housing Association properties.

### Household Accommodation Types

Household Accommodation Types	%
Detached	58.7
Semi-detached	24.6
Flat, maisonette or apartment	2.5
Terraced	11.6
Caravan or other mobile temporary structure	2.7



### Household Accommodation Types



## SOCIO-ECONOMIC CHARACTERISTICS

- ⇒ The estimated median household income for St. Ishmael, based on CACI's 2020 'PayCheck' data, is £32,128 which is the 10<sup>th</sup> highest (of 58 wards) in Carmarthenshire and 12.3% above the Carmarthenshire median of £28,186.
- ⇒ The social profile information indicates a higher than average level of people in higher/lower managerial and professional administrative occupations (Levels 1-2) and a lower than average number of people in lower supervisory and technical occupations and semi/routine occupations (Levels 5-7) than the average.

Social Profile	St. Ishmael	%	Carmarthenshire %
<i>All people aged 16-74 in households</i>	1974	100	100
<b>1: Higher Managerial &amp; Professional Admin. Occupations</b>	418	21.2	13.8
<b>2: Lower Managerial &amp; Professional Admin. Occupations</b>	505	25.6	19.9
<b>3: Intermediate Occupations</b>	233	11.8	11.6
<b>4: Small Employers &amp; Own Account Workers</b>	360	18.2	12.6
<b>5: Lower Supervisory &amp; Technical Occupations</b>	108	5.5	7.6
<b>6: Semi-routine Occupations</b>	241	12.2	16.7
<b>7: Routine Occupations</b>	152	7.7	13.0
<b>8: Never Worked &amp; Long Term Unemployed</b>	54	2.7	4.9

Source: 2011 Census, ONS

## ECONOMY AND LABOUR MARKET

Economic Status (people aged 16-74)	St. Ishmael	St. Ishmael %	Carmarthenshire %
<b>Economically Active</b>	1293	65.6	64.9
Employees: Part-time	246	12.5	13.9
Employees: Full-time	639	32.4	33.7
Self-employed	324	16.4	11.0
Unemployed	39	2.0	3.7
Full-time Student	45	2.3	2.5
<b>Economically Inactive</b>	681	34.4	35.1
Retired	446	22.6	18.1
Student	68	3.4	4.5
Looking after home/family	48	2.4	3.8
Permanently sick/disabled	93	4.7	6.8
Other	26	1.3	1.9

Source: 2011 Census, ONS

Benefit Claimants (June 2020)	St. Ishmael	Rate %	Carmarthenshire Working Population %
Claimant Count unemployment (JSA) – March 2021	#	#	0.6
Universal Credit (total claimants) – February 2021	87	5.9	11.3
Incapacity Benefits (ESA and IB/SDA) – August 2020	79	5.4	7.9
Disability-related benefits (PIP, DLA and AA) – August 2020	311	21.1	22.3
Pension Credit (PC) – August 2020	76	8.5	13.0

**# These figures are suppressed as value is 1 or 2.**

Source: Department for Work & Pensions and ONS.

Note: Claimant Count unemployment includes Jobseeker's Allowance (JSA) claimants plus Universal Credit (UC) claimants who are required to seek work.

ESA = Employment Support Allowance; IB/SDA = Incapacity Benefit / Severe Disablement Allowance; PIP = Personal Independence Payment;

DLA = Disability Living Allowance; AA = Attendance Allowance. Estimated rates shown as % of population aged 16-64, except disability benefits (all people) and PC (aged 65+). Universal Credit is replacing six means-tested benefits and tax credits (known as legacy benefits): Income-based JSA; Income-related ESA; Income Support; Working Tax Credit; Child Tax Credit; Housing Benefit. Further statistical information on UC and other benefits is available.

## WELSH INDEX OF MULTIPLE DEPRIVATION (WIMD)

WIMD 2019 based on fine-grained geography of lower Super Output Areas (LSOAs). The WIMD 2019 is compiled from eight domains, Income, Employment, Health, Education, Housing, Access to Services, Physical Environment and Community Safety and is published at Lower Super Output Area of which there are 112 in Carmarthenshire.

Under WIMD, where Rank 1 is the most deprived, **St. Ishmael 1** ranks 105 in Carmarthenshire from 112 LSOAs and is ranked 1445 in Wales from 1909 LSOAs. **St. Ishmael 2** ranks 44 in Carmarthenshire and is ranked 787 from 1909 LSOAs in Wales.

The highest level of deprivation attributed to **St. Ishmael 1** is the Access to Services domain, being ranked 26<sup>th</sup> in Carmarthenshire and 195 in Wales for this domain. In **St. Ishmael 2** the Physical Environment domain is the most prominent ranking 2<sup>nd</sup> in Carmarthenshire and 132 in Wales.

### St. Ishmael 1 – Llandyfaelog, Croesyceilog, St. Ishmael 2 – Llansaint.

LSOA	Overall Index		Income		Employment		Health		Education		Access to Services		Community Safety		Physical Environment		Housing	
	Rank	Wales	Rank	Wales	Rank	Wales	Rank	Wales	Rank	Wales	Rank	Wales	Rank	Wales	Rank	Wales	Rank	Wales
St Ishmael 1	1445	105	1554	106	1642	110	1494	94	1536	104	195	26	1873	110	637	37	1224	85
St Ishmael 2	787	44	1104	69	1105	79	1055	59	926	52	129	20	1418	67	132	2	498	33

Source: Welsh Index of Multiple Deprivation 2019 Welsh Assembly Government.

Note: LSOAs ranked 1-112 (Carmarthenshire), 1-1909 (Wales).

## CRIME

Fiscal Year (1st April to 31st March)	Offence Group												Annual Total
	Arson & Criminal Damage	Burglary – Business & Community	Burglary – Residential	Drug Offences	Miscellaneous Crime Against Society	Possession of Weapons	Public Order Offences	Robbery	Sexual Offences	Theft	Vehicle Offences	Violence Against the Person	
<b>2020/2021</b>	4	7	4	1	1	0	6	0	4	5	2	53	<b>87</b>

Source: Dyfed Powys Police, Headquarters, Llangunnor.

**For further information please contact:**

Lesley Rees, Policy & Research Officer

01267 224462

llrees@carmarthenshire.gov.uk