

# CARMARTHENSHIRE COUNTY PROFILE

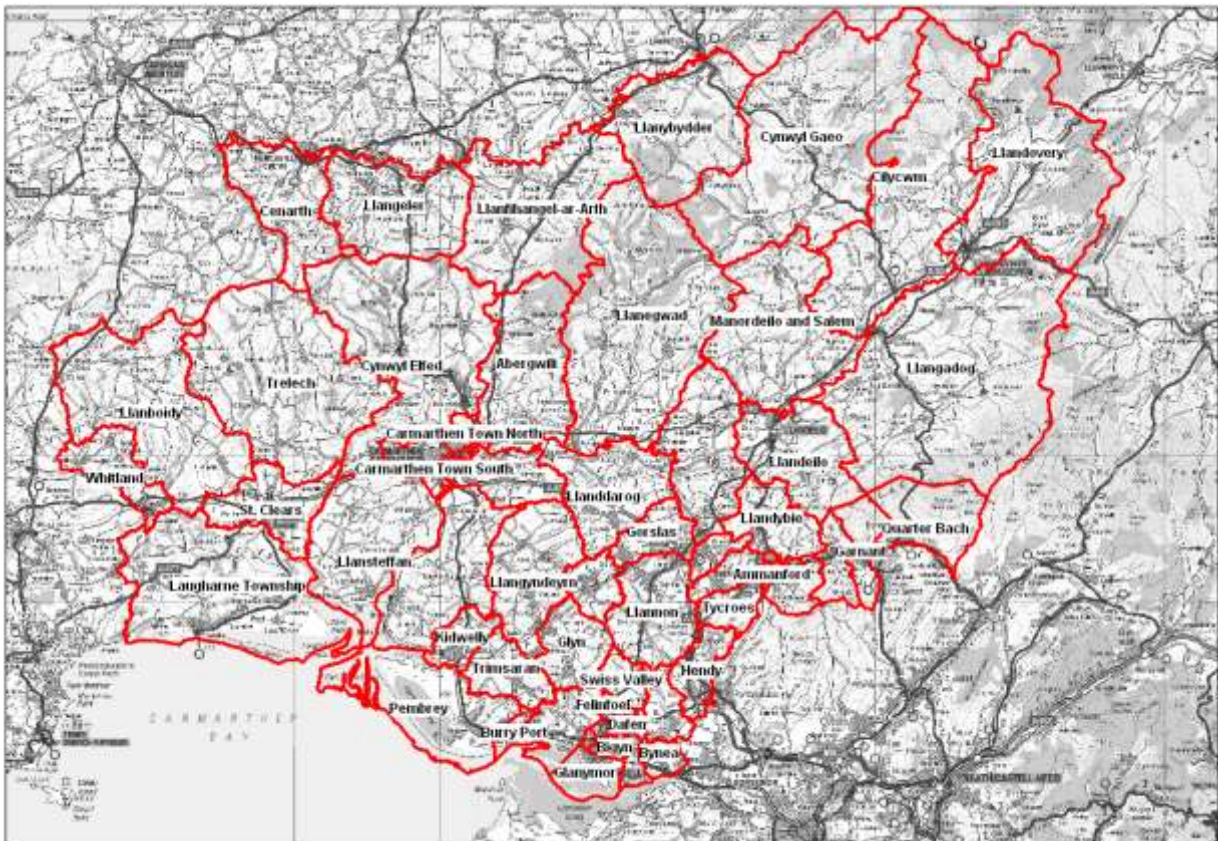
Research and Information Unit, Carmarthenshire County Council, January 2019

**Councillors (Electoral Vote 2017):** 74 Elected Members Turnout = 46.81%

**Electorate (December 2018):** 140,190

**Population:** 186,452 (2017 Mid Year Population Estimates)

**Welsh Assembly and UK Parliamentary Constituencies:** Carmarthenshire East & Dinefwr; Carmarthen West & Pembrokeshire; and Llanelli

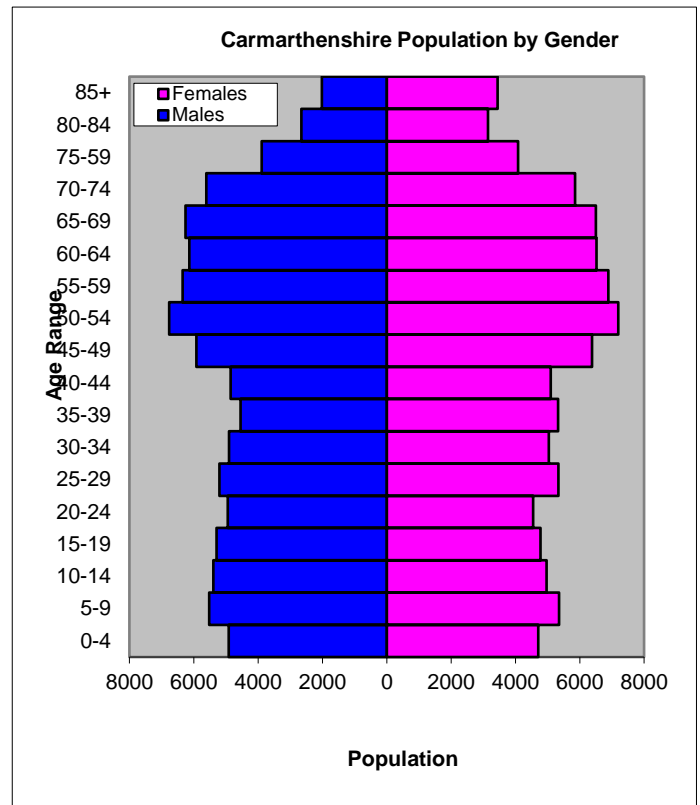


- ⇒ Location: West Wales
- ⇒ Neighbouring Authorities: Ceredigion, Pembrokeshire, Swansea, Powys and Neath Port Talbot
- ⇒ Area: 2,370 km<sup>2</sup>
- ⇒ Population Density: 77 people km<sup>2</sup>
- ⇒ Population Change: 2011-2017 +2,675 (+1.5%)
- ⇒ Major Employers: Carmarthenshire County Council, Dyfed Powys Police

## POPULATION STATISTICS 2017 Mid-year Population Estimates

Age Structure	Carms Population	Carms %	Wales Population	Wales %
Aged: 0-4	9,621	5.2	170,709	5.5
5-14	21,234	11.4	355,925	11.4
15-24	19,560	10.5	385,673	12.3
25-44	40,302	21.6	742,574	23.8
45-64	52,264	28.0	827,015	26.5
65-74	24,224	13.0	356,622	11.4
75+	19,247	10.3	286,647	9.2
<b>Total</b>	<b>186,452</b>	<b>100</b>	<b>3,125,165</b>	<b>100</b>

Source: 2017 Mid Year Population Estimates, ONS.



- ⇒ Carmarthenshire has the 4<sup>th</sup> highest population in Wales.
- ⇒ Highest proportion of people are aged over 45 accounting for 51% of the total population, and 23% of the total population are aged over 65.
- ⇒ 76% of the population were born in Wales and 44% are able to speak the Welsh Language.

## 2011 Census Data

Population: Key Facts	Carms	Carms %	Ceredigion %	Pembs %	S'sea %	Wales %
<b>People:</b> born in Wales	139,639	76.0	55.3	67.0	77.7	72.7
born outside UK	7,585	4.1	5.9	4.6	7.2	5.5
in non-white ethnic groups	3,454	1.9	2.9	1.7	5.6	3.9
with limiting long-term illness	46,675	25.4	21.1	22.5	23.4	22.7
with no qualifications (aged 16-74)	40,334	26.8	19.8	24.6	23.9	25.9
with higher level qualifications (aged 16-74)	103,813	23.9	27.9	24.8	25.8	24.5
able to speak Welsh	78,048	43.9	47.3	19.2	11.4	19.0

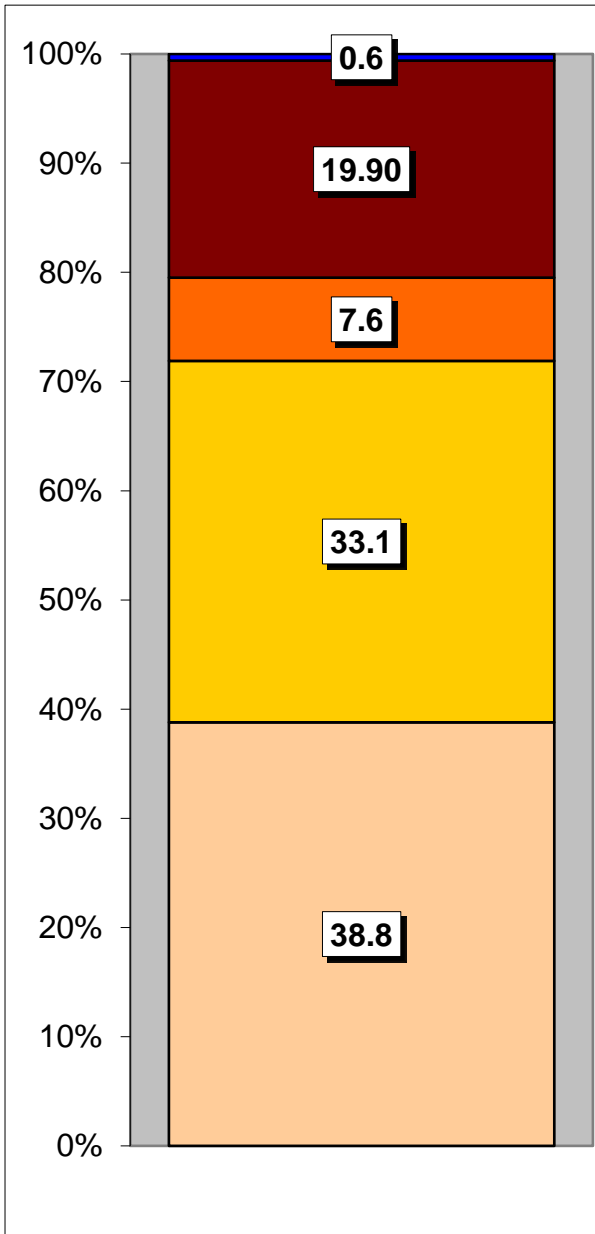
Household Composition	Carms	Carms %	Ceredigion %	Pembs %	S'sea %	Wales %
<b>Total Households/ (Average Household Size)</b>	78,829					
Household Type: one person: pensioner	11,652	14.8	15.5	15.0	13.4	13.7
one person: other	12,118	15.4	17.7	15.8	19.9	17.1
one family: all pensioners	7,729	9.8	10.1	10.9	8.7	8.9
one family: married couple	26,819	34.1	30.3	33.1	30.4	32.8
one family: cohabiting couple	6,904	8.7	9.1	8.7	8.6	9.6
one family: lone parent	8,922	11.3	7.9	11.0	11.6	11.3
Other Household Types	4,685	5.9	9.4	5.4	7.3	6.4

Source: 2011 Census, ONS

## HOUSING

The County's housing consists mostly of detached houses with a very low proportion of flats, maisonettes, apartments and caravan or temporary structures.

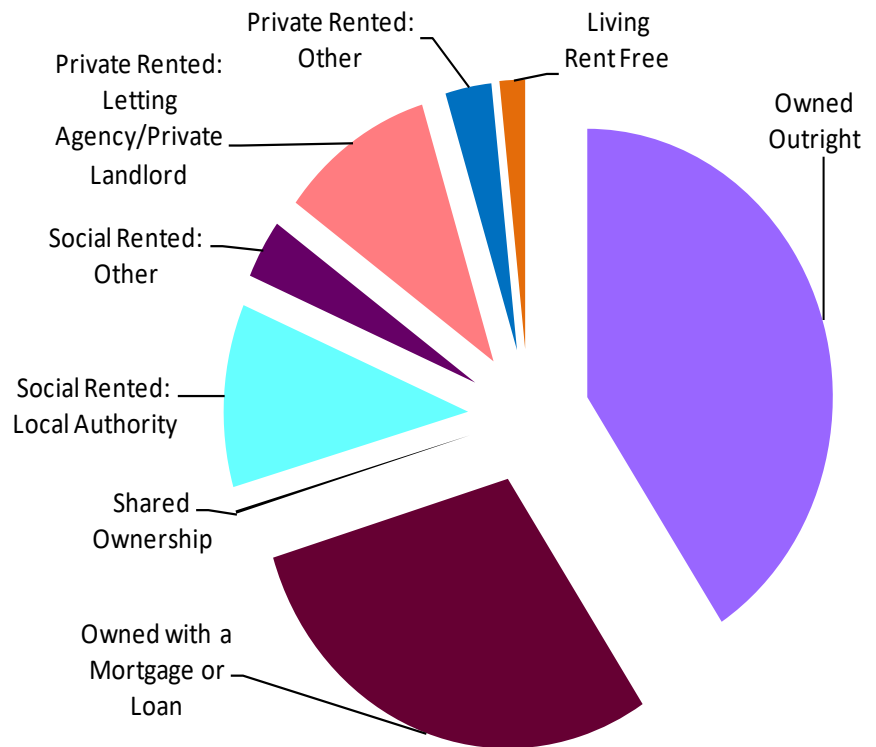
### Household Accommodation Types



### Household Tenure

Owns outright	41.4%
Mortgaged	30.0%
Shared Ownership	0.2%
Rented from Local Authority	11.2%
Rented from Registered Social Landlord	3.6%
Rented from Private Landlord	10.4%
Rented from other	1.4%
Living Rent Free	1.7%

Source: 2011 Census, ONS



### Household Accommodation Types

- Caravan or other mobile temporary structure
- Flat, maisonette or apartment
- Terraced
- Semi-detached
- Detached

## SOCIO-ECONOMIC CHARACTERISTICS

- ⇒ The estimated median household income for Carmarthenshire, based on CACI's 2018 'PayCheck' data, is £25,488 which is the 7<sup>th</sup> lowest from the 22 authorities in Wales and 5.7% below the Wales median of £26,931.
- ⇒ The social profile information indicates the County has a higher percentage of Managerial, Professional, Administrative & Intermediate Occupations (Levels 1-3) and a lower percentage than Wales of people who have Never Worked & Long Term Unemployed (Level 8)

(In statistics, a **median** is described as the numerical value separating the higher half of a sample, a statistical population, probability distribution from the lower half. Whilst the **mean** is just the average of the numbers).

Social Profile	Carms	Carms %	Ceredigion %	Pembs %	S'sea %	Wales %
<b>All people aged 16-74 in households</b>	132,930					
<b>1: Higher Managerial &amp; Professional Admin. Occupations</b>	18,216	13.8	16.1	12.8	15.8	15.6
<b>2: Lower Managerial &amp; Professional Admin. Occupations</b>	26,462	19.9	18.2	19.9	19.6	19.6
<b>3: Intermediate Occupations</b>	15,416	11.6	8.7	10.3	13.2	12.0
<b>4: Small Employers &amp; Own Account Workers</b>	16,708	12.6	16.0	15.0	7.1	9.4
<b>5: Lower Supervisory &amp; Technical Occupations</b>	10,152	7.6	6.0	9.0	16.7	8.1
<b>6: Semi-routine Occupations</b>	22,210	16.7	12.1	16.9	15.0	16.0
<b>7: Routine Occupations</b>	17,291	13.0	8.1	12.1	11.5	12.8
<b>8: Never Worked &amp; Long Term Unemployed</b>	6,522	4.9	3.1	4.7	5.2	5.4

Source: 2011 Census, ONS

## ECONOMY AND LABOUR MARKET

Benefit Claimants (All people Aged 16-64)	Carms	Carms %	Ceredigion %	Pembs %	S'sea %	Wales %
Unemployment Benefit (JSA) November 2018	1,595	1.4	0.8	1.1	0.6	0.8
Incapacity Benefits (ESA/IB/SDA) May 2018	9,960	9.0	6.9	8.1	8.4	8.2
Income Support: May 2018	1,650	1.5	0.9	1.7	1.6	1.7
Disability Living Allowance May 2018	6,870	6.2	4.3	5.0	5.4	6.4
Pension Credit: May 2018	6,520	15.3	13.0	14.1	17.1	16.3
State Pension Claimants: May 2018	43,370					

Source: Jobcentre Plus Administrative System Dept. for Work & Pensions

Economic Status (People Aged 16-74)	Carms	Carms %	Ceredigion %	Pembs %	S'sea %	Wales %
<b>Economically Active</b>	86,217	64.9	61.0	66.0	63.0	65.8
Employees: Part-time	18,475	13.9	11.5	15.3	14.2	13.9
Employees: Full-time	44,839	33.7	26.4	30.9	33.7	35.6
Self-employed	14,642	11.0	14.4	13.5	6.6	8.6
Unemployed	4,962	3.7	2.6	4.0	3.9	4.3
Full-time Student	3,299	2.5	6.2	2.2	4.6	3.3
<b>Economically Inactive</b>	46,713	35.1	38.9	34.0	37.0	34.2
Retired	19,809	18.1	16.6	18.7	15.6	16.1
Student	5,539	4.5	13.6	3.8	4.7	6.0
Looking after home/family	7,658	3.8	2.8	4.3	3.7	3.8
Permanently sick/disabled	13,599	6.8	4.4	5.3	6.9	6.3
Other	4,258	1.9	1.4	1.9	2.1	2.0

Source: 2011 Census, ONS



## WELSH INDEX OF MULTIPLE DEPRIVATION (WIMD)

WIMD 2014 based on fine-grained geography of Lower Super Output Areas (LSOAs). The WIMD 2014 is compiled from eight domains: Income; Employment; Health, Education; Housing; Access to Services; Physical Environment; and Community Safety and is published at Lower Super Output Area of which there are 112 in Carmarthenshire.

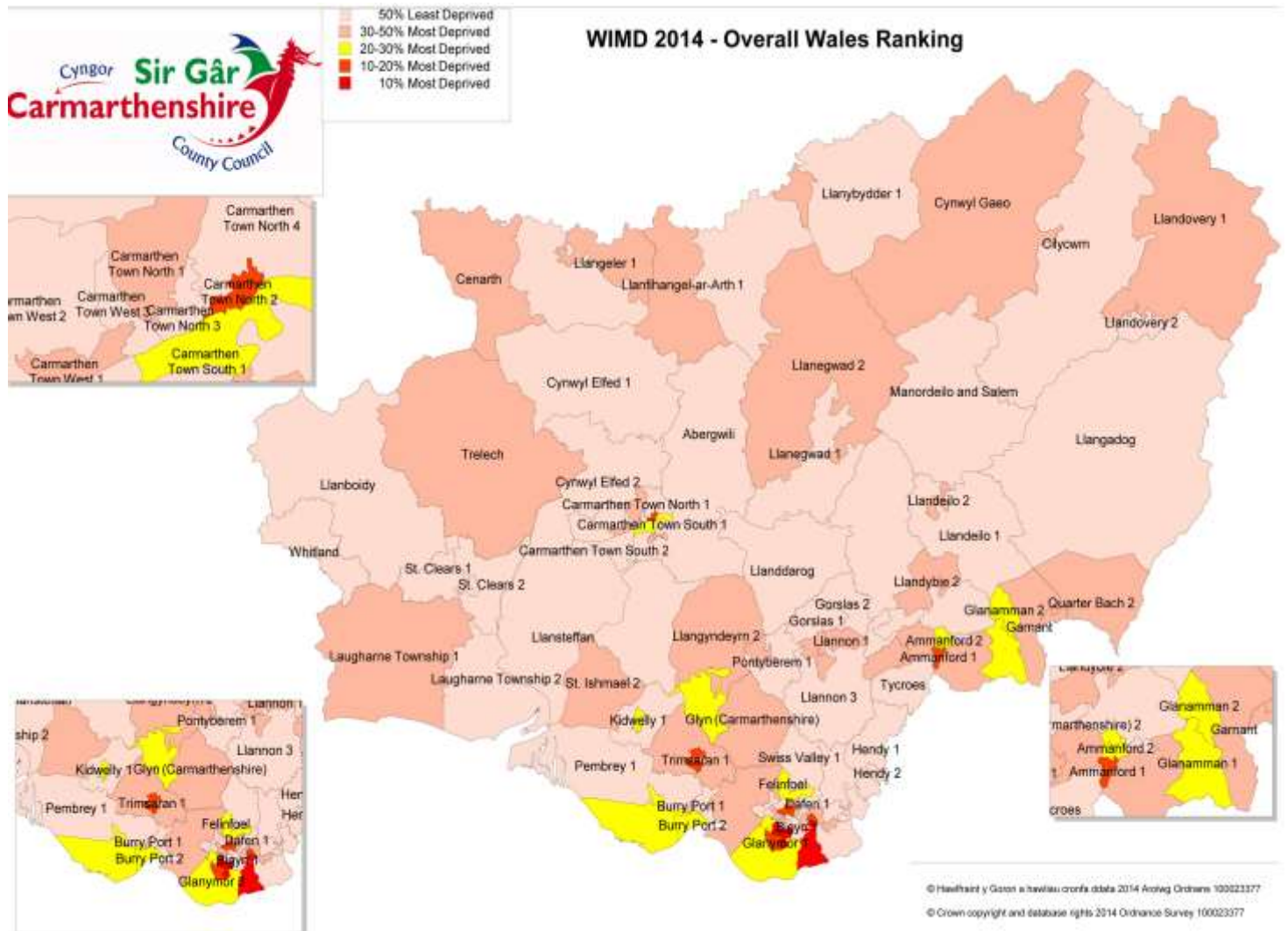
The table below indicates the % of our LSOAs which are in the most deprived % of all Wales.

These figures clearly state that 53% of our LSOAs are in the most deprived 50% of All Wales and 4% of them are in the most deprived 10% of All Wales.

Local Authority	Number of LSOAs	% of LSOAs in most deprived 10% of All Wales	% of LSOAs in most deprived 20% of All Wales	% of LSOAs in most deprived 30% of All Wales	% of LSOAs in most deprived 50% of All Wales
Carmarthenshire	112	4	11	22	53
Ceredigion	46	2	2	7	39
Pembrokeshire	71	6	8	15	37
Swansea	148	12	24	28	47

Source: Welsh Index of Multiple Deprivation 2014 (released November 2014), Welsh Assembly Government.

Note: LSOAs ranked 1-112 (Carmarthenshire), 1-1909 (Wales).



**CRIME (\* Fraud reports are now recorded centrally by Action Fraud)**

County: Carmarthenshire	Offence group												Annual Total
Fiscal Year (1st April to 31st March)	Arson & Criminal Damage	Burglary Business & Community	Burglary Residential	Drug Offences	Miscellaneous Crimes Against	Possession of Weapons	Public Order Offences	Robbery	Sexual Offences	Theft	Vehicle Offences	Violence Against the Person	
<b>2017-18</b>	1,670	401	207	669	221	46	463	17	420	2,130	356	3,532	<b>10,132</b>

Source: Dyfed Powys Police, Headquarters, Llangunnor.

**For further information please contact:**

Lesley Rees, Policy & Research Officer

01267 224462

llrees@carmarthenshire.gov.uk