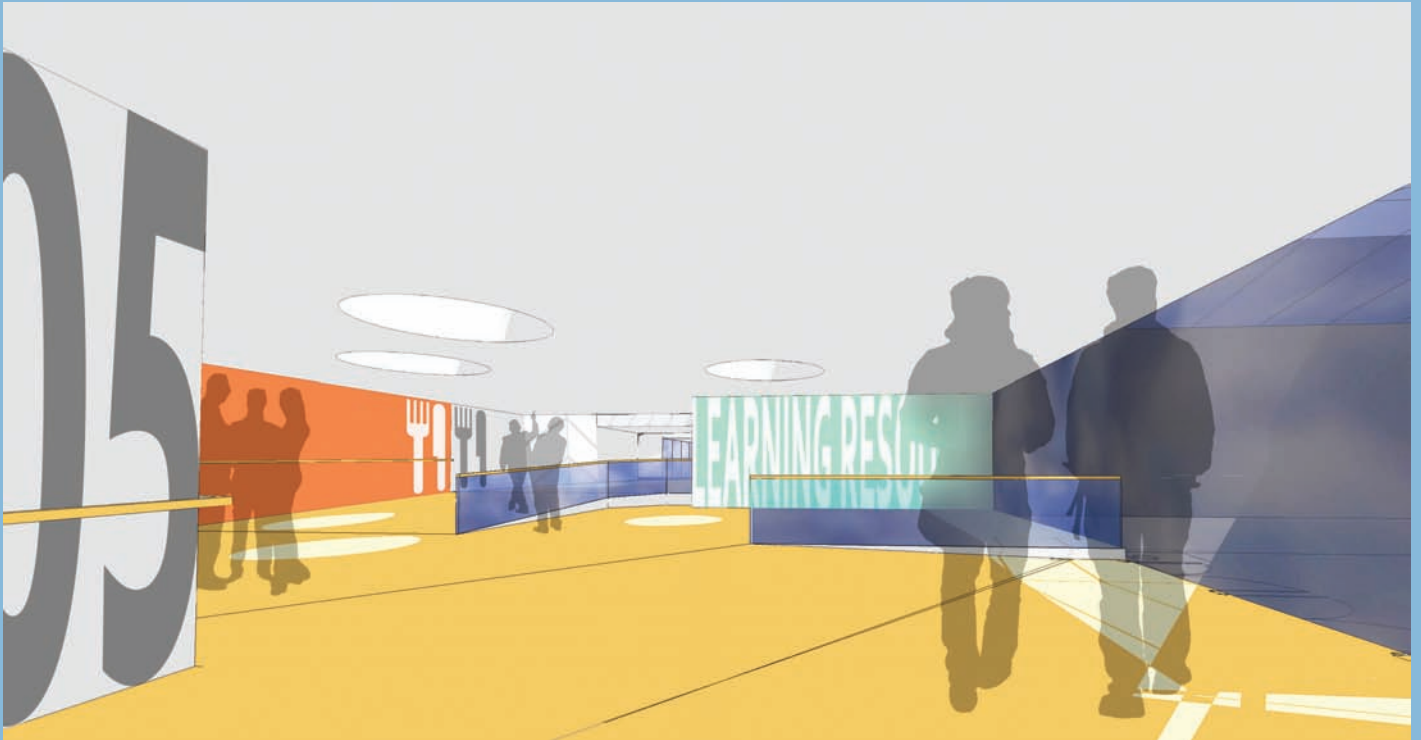


# The Statutory Proposals for the Transformation and Re-configuration of Secondary Education in the Dinefwr area of Carmarthenshire

A formal consultation document



<b>Contents</b>	<b>Page</b>
<b>Foreword</b>	3
<b>Introduction</b>	4
• Reasons and rationale for change	5
• Consultation and business cases	9
<b>The proposals for Dinefwr</b>	12
1. The proposal for Dyffryn Tywi	12
2. The proposal for Dyffryn Aman	13
3. The proposal for Cwm Gwendraeth	14
<b>Transition arrangements</b>	16
1. Dyffryn Tywi	16
2. Dyffryn Aman	17
3. Cwm Gwendraeth	18
<b>Additional information</b>	19
• Effect on standard of education	19
• Provision for pupils with special educational needs	20
• Catchment areas	21
• Transport	22
• The Welsh language and Welsh medium education	23
• Learning Pathways 14-19	25
• Post-16 provision	25
• Staffing issues	26
• Governance	26
• Effect on other schools	26
• Community use of school premises	27
<b>Views of stakeholders and consultation with pupils, parents, staff, governors and the community</b>	27
• Time-table for consultation	27
• The statutory process	28
• Your opportunity to respond to our proposals	28
<b>Appendix 1: Response sheet</b>	29
<b>Appendix 2: Documents and publications</b>	30



## Foreword

Carmarthenshire County Council after much discussion and informal consultation is now in a position to present its formal proposals with respect to transformation and re-configuration of secondary education in the Dinefwr area of the county. Dinefwr is one of three clusters of secondary schools within Carmarthenshire and within these clusters many aspects of education is managed and organised. The transformation of secondary education is also affecting schools in the other two clusters of the Authority. Dinefwr is located to the north and east of Carmarthenshire and currently includes five secondary schools, namely Pantycelyn, Tre-Gib, Dyffryn Aman, Maes Yr Yrfa and Gwendraeth.

A period of Dinefwr tri-level discussions commenced in August 2007 and concluded with the publication of a PAWB (Partneriaeth ar Waith Bro/Community Partnership in Action) paper and agreement which formed the basis of a transformation consultation document in December 2008. A period of informal public consultation ended in March 2009 and following the successful submission of three business cases to the Welsh Assembly Government, the County Council wishes to formally present its long-term Dinefwr statutory proposals.

If you require this document in any other format please contact the Governor Support Unit, Education and Children's Services Department on (01267) 246500.



# Introduction

Education leaders in Dinefwr and Carmarthenshire had expressed concern for some time as to the creation of sustainable learning communities in Dinefwr. This was at a time of great change in response to local and national priorities and an emphasis on improved outcomes for children and young people. The Dinefwr area of the county reflects many features which are common to other areas of Wales; it includes the smallest and the largest secondary school in the Authority, it also includes large rural areas which are experiencing depopulation and in other parts a large fairly densely populated semi-urban and former industrial areas. Dinefwr is also an area where a high percentage of the population is Welsh speaking and includes the most densely Welsh speaking populated areas in Wales. There are an increasing number of surplus places in some schools whilst others are becoming increasingly short of space. In addition the fabric of the school buildings was seen to be deteriorating and in much need of refurbishment. This traditional environment which had served the area well over a long period of time was not appropriate for the Twenty-First Century. It was in this context that the officers of the Authority and the leaders of the schools embarked on the pioneering tri level discussions.

The Dinefwr Tri-level process commenced in August 2007 and concluded with the production of a paper known as the PAWB (Partneriaeth ar Waith Bro/Community Partnership in Action) agreement in July 2008. This Tri-level group consisted of representatives of the Department for Children, Education Lifelong Learning and Skills (DCELLS) of the Welsh Assembly Government, Carmarthenshire County Council and representatives of secondary schools, Coleg Sir Gâr and the voluntary sector in Dinefwr.

The main proposals of the PAWB paper as agreed by all partners are listed below and formed the basis of further consultation.

*"To reconfigure the existing learning settings of five 11-19 secondary schools and the post 16 further education college as follows:*

- *three 11-19 learning centres to replace the existing five secondary schools*
  - *one learning centre based on the two sites of the existing Maes Yr Yrfa and Gwendraeth schools*
  - *one learning centre based on the existing site of Dyffryn Aman school*
  - *one learning centre*
    - Either***
      - *based on the two sites of the existing Pantycelyn and Tre-Gib schools*
    - Or***
      - *based on a single site*
- *each of the three learning centres to adopt a common approach to the implementation of the 7-14 curriculum in conjunction with partner primary schools and a phased continuation of the bilingual model of curricular delivery already undertaken by the vast majority of primary schools*
- *the three 11-19 learning centres and the post-16 further education college to collaborate formally for 14-19 learning provision through the establishment of a joint management committee, to include representatives from the local authority, training providers and the voluntary sector."*

In December 2008 the Authority published its *“Tri-level Reform in the Dinefwr area of Carmarthenshire, a first strategic review for consultation”* in response to the Tri-level discussions and PAWB agreement. The document described in some detail the need for change and outlined a number of options for consideration during an informal consultation period.

## Reasons and rationale for change

The reasons for change within Dinefwr are educational, demographic and financial. The need for change and why these proposals have been brought forward may be described under the following headings:

### 1. Changes to the curriculum and the requirements of the Learning and Skills Measure (Wales) 2009

Recent changes to the curriculum and the increased expectations on schools, colleges and other providers of education to provide a greater choice of courses for its pupils in the 14 – 19 age range is placing pressure on the current education structure. Whilst the Measure applies to all 14-19 educational institutions in all parts of Wales it is therefore affecting the courses provided in Coleg Sir Gâr and the secondary schools in Dinefwr. The recently implemented Learning and Skills (Wales) Measure 2009 requires all pupils in Key Stage 4 and the Sixth Form to be offered a minimum of 30 courses. These courses are to be offered to pupils in a range of academic and vocational areas and courses are to be offered bilingually. This is placing additional pressure on schools with smaller sixth forms and it is becoming increasingly apparent that historical and current solutions are not sustainable in the new era when learners are entitled to a greater choice at the 14 – 19 phase.

### 2. The decline in pupil numbers

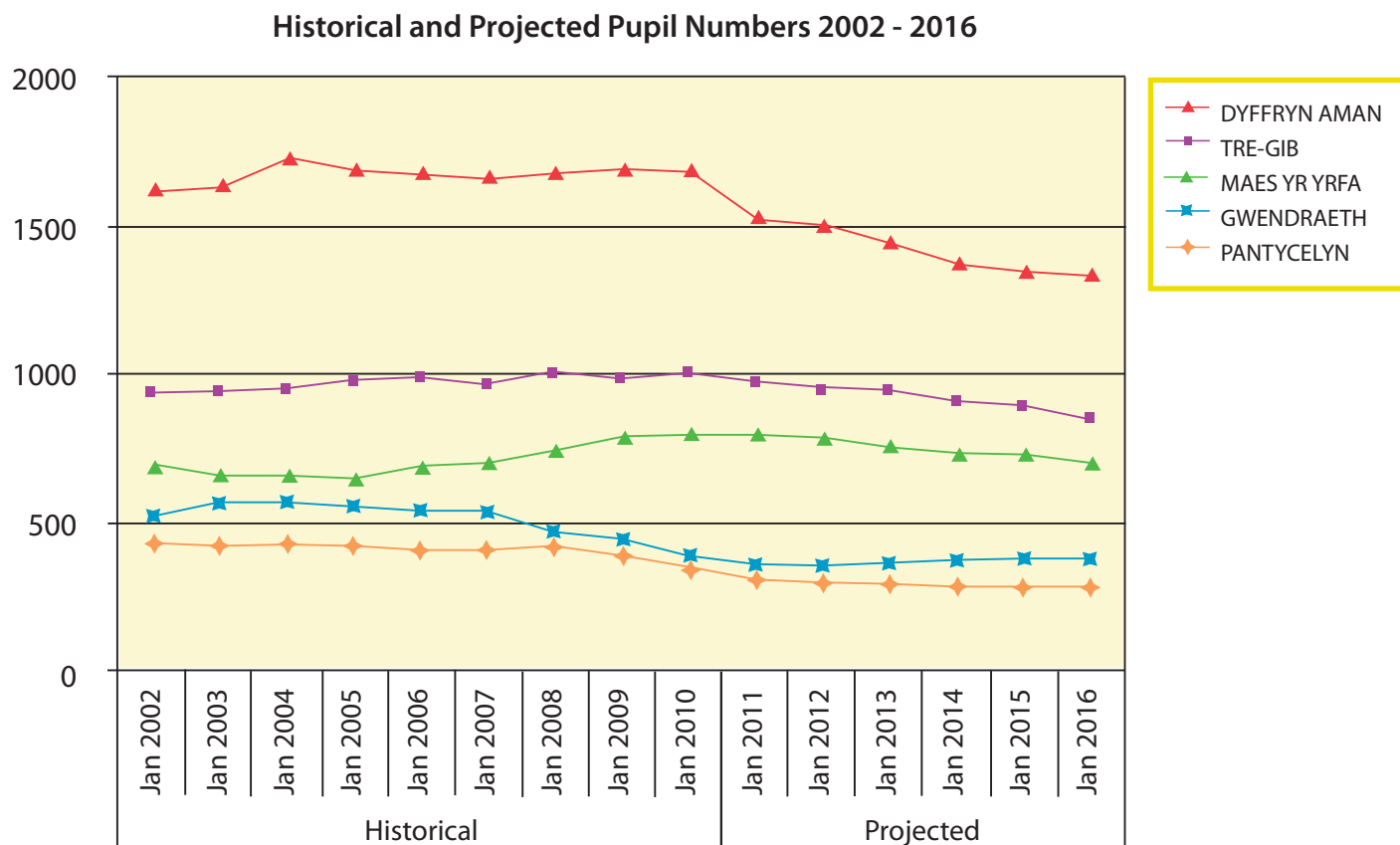
During recent years there has been a decline in pupil numbers across Dinefwr and the effect of the decline has been greatest in the smaller secondary schools. This trend will continue in the near future as the following pupil projections and data indicate. This is placing additional educational and financial pressures on schools.

**TABLE 1: The current total pupil numbers for Dinefwr secondary schools with Local Authority projections for the period 2010 - 2016.**

School	Total Pupils	LA projections for each school (2010)			
	Jan. 2011	2010	2012	2014	2016
Pantycelyn	313	317	297	283	279
Tre-Gib	1,008	993	943	901	851
Dyffryn Aman	1,625	1,596	1,496	1,368	1,335
Maes Yr Yrfa	786	796	784	736	705
Gwendraeth	359*	372	352	371	375

\*Includes 17 pupils in the Garreg Lwyd unit

The following graph also illustrates recent historical trends and future projections for the five secondary schools during the period 2002 – 2016 and shows the general decline in pupil numbers across all Dinefwr schools.



The very small student numbers in some Sixth Forms is also placing pressures on schools. With the general decline in secondary school pupil numbers, the sixth forms are likely to decline even further placing additional constraints on schools to provide choice and quality for their learners.

**TABLE 2: The current Sixth Form numbers (Years 12 and 13) for Dinefwr secondary schools with Local Authority projections for the period 2010 - 2016.**

School	Total Yrs 12/13	LA projections for each school (2010)			
	Jan. 2011	2010	2012	2014	2016
Pantycelyn	68	66	65	51	51
Tre-Gib	193	181	179	172	158
Dyffryn Aman	303	303	298	294	223
Maes Yr Yrfa	141	149	160	164	138
Gwendraeth	38	51	38	26	39

### 3. The need to reduce surplus places

The decline in pupil numbers is greater in Dinefwr than in other areas of Carmarthenshire and this pattern is set to continue into the foreseeable future. Table 3 shows the current pupil numbers (January 2011) at each of the 5 Dinefwr schools, the capacity of each school and the number of surplus places at the schools.

**TABLE 3: The current total pupil numbers for Dinefwr secondary schools, numbers in the Sixth Form (Years 12 and 13), the capacity in terms of pupil numbers and the current number of surplus places.**

School	Total no. of pupils	No. Yr 12/13	Current Capacity	Surplus Places
	(Jan. 2011)	(Jan. 2011)	(MCSW)	
Pantycelyn	313	68	613	300
Tre-Gib	1,008	193	931	-77
Dyffryn Aman	1,625	303	1,732	107
Maes Yr Yrfa	786	141	783	-3
Gwendraeth	359*	38	739	397

\*Includes 17 pupils in the Garreg Lwyd unit

The table shows that two of the current schools, Tre-Gib and Maes Yr Yrfa are over capacity, whilst Pantycelyn and Gwendraeth are well under capacity. Over the whole of Dinefwr there is a net surplus of 724 places whilst the two smallest schools have a total of 697 surplus places between them. An excessive number of surplus places mean that resources are tied up unproductively. The proposals contained in this document provide Carmarthenshire an opportunity to re-structure the secondary schools on a more equitable basis and to ensure that funding is used cost effectively.

### 4. Recent changes to budgets and the increased pressures on schools

Recent changes to school budgets has also put pressure on schools at a time when there is an expectation to provide more courses for learners. The most significant change during recent years is the change in the funding mechanism responsible for the allocation of post 16 budgets. Post 16 funding is now the responsibility of DCELL at the Welsh Assembly with a new method of allocating finance to schools. These pressures are reflected in the allocation of resources to different schools and these vary a great deal even within the 5 schools in Dinefwr. The average budget share per pupil (2010-11 data) varies from £4,124 per pupil to £5,404 per pupil within the five schools which is a significant difference of £1,280. Schools are aware that they are working with fewer resources and with the increased efficiency expectations it is likely that the pressures imposed on budgets will increase.

### 5. The need to provide more Welsh medium courses in response to the Welsh Education Scheme

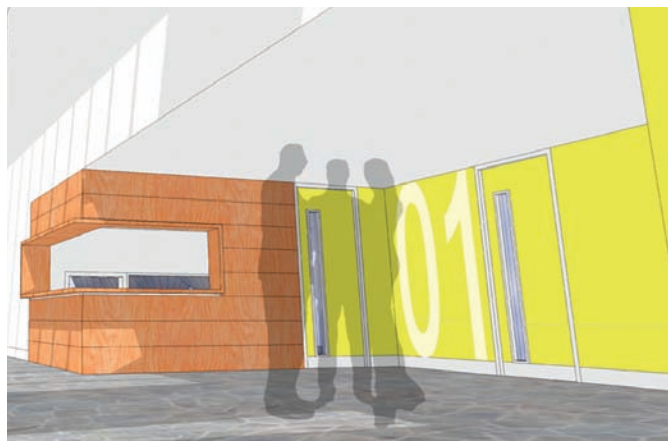
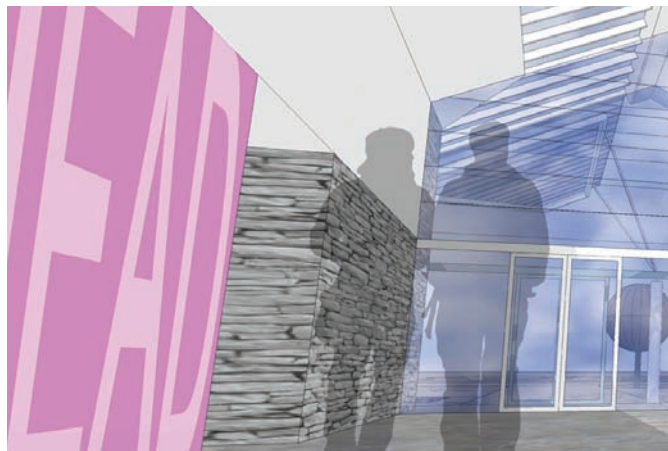
The opportunities to develop the Welsh language skills of young learners and hence their bilingualism, is an important aspect of the work of Dinefwr schools. This is the challenge facing schools and yet, when classes are small with limited resources, developing a curriculum through the medium of Welsh is difficult.

As schools are required to provide a greater choice of courses for their pupils, maintaining and increasing the size of Welsh medium classes and improving the bilingual skills of pupils will remain a priority for Dinefwr schools. These proposals will assist schools to enhance the opportunities to develop the bilingualism of their pupils and enable them to move along the language continuum of Carmarthenshire's Welsh Education Scheme and also implement the requirements of the recently published Welsh Medium Education Strategy of the Welsh Assembly Government.

## **6. Transforming education as result of “The Transforming Education and Training Provision for Wales” document published by DCELLS in September 2008**

The Welsh Assembly Government is seeking ways to more fully integrate the work of schools, colleges and post-16 providers by transforming ways in which education and training is delivered. Local Authorities in discharging their community leadership function have a responsibility to co-ordinate the transformation of 14 – 19 education with the re-organisation of secondary schools. The transformation paper emphasises that there are too many sixth forms, too many secondary schools in some areas, small sixth form classes in some schools and surplus 11 – 16 places in others and all this results in high staffing and building costs. This is another reason for presenting our Dinefwr proposals.

In addition a condition survey of Dinefwr secondary schools have concluded that much needed investment is required to modernise provision and improve facilities in order to provide for our children schools which are fit for the Twenty-First Century. These proposals have provided Carmarthenshire with this unique opportunity.



## **7. Inclusion and Special Educational Needs**

These proposals to re-organise secondary education in Dinefwr have provided the Authority with an opportunity to re-appraise the inclusive nature of its schools and the provision for pupils with Special Educational Needs. A later section of this document describes the increased and improved facilities proposed for Special Educational Needs pupils in Dinefwr.

## **8. Welsh Assembly Government funding**

Carmarthenshire County Council's successful submission for a substantial capital investment in Dinefwr schools has provided an opportunity to re-model and re-furbish Ysgol Dyffryn Aman and the new school at Cwm Gwendraeth and build a large new school in Dyffryn Tywi. This investment will provide much needed improvement to the schools and provide our pupils with facilities and resources which meet the needs of the Twenty-First Century.



## Consultation and business cases

The *“Tri-level Reform in the Dinefwr area of Carmarthenshire, a first strategic review for consultation”* document included a total of 13 possible options for Dinefwr and these formed the basis for discussion during the informal consultation period. In addition, an initial analysis of advantages/strengths and weaknesses/challenges were made for the more favoured options in order to assist with consultation and decision-making. Further options were also raised and considered during the consultation period.

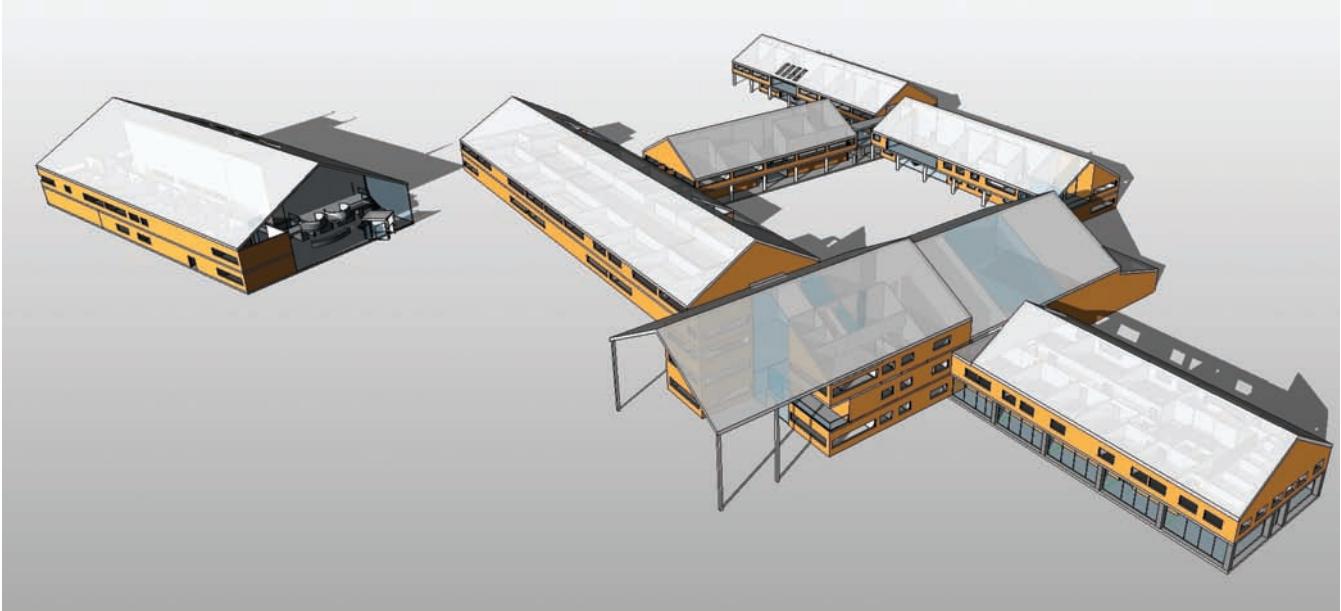
The informal consultation period took place between January and March 2009. A total of 23 meetings took place during this period involving school pupils, governors, staff and parents in each of the five secondary schools in Dinefwr and also in two community meetings. Following the consultation period a report was produced describing the main findings and the views expressed.

The response to the informal consultation period has been included in the *“Tri-Level Reform in the Dinefwr area of Carmarthenshire - a Report on the Informal Public Consultation, January – March 2009”* which was published in May 2009. The total number of responses received during the consultation was 7,952 of which 2,589 were in the form of letters whilst 23 associations and groups submitted a response. Three petitions with a combined total number of 5,363 signatories were received. The majority of the views expressed during this informal consultation have been incorporated into the proposals.

Nevertheless a strong representation was made during the informal consultation period to retain the current 11 – 19 school at Ysgol Pantycelyn, Llandovery. During the tri level discussions and within the strategic document which was published as a part of the informal consultation a number of options were considered in an attempt to retain a school at Pantycelyn. These included the following:

- A 3-19 through school incorporating Ysgol Rhys Pritchard and Pantycelyn
- A 11-19 school at Pantycelyn
- A 11-16 school at Pantycelyn with post 16 education at Tre-Gib
- A 11-14 school at Pantycelyn with post 14 education at Tre-Gib
- A 11-16 Bilingual Category 2A school at Pantycelyn
- A split site school with 11-14 education at Pantycelyn and 14-19 education at Tre-Gib
- A Dinefwr sixth form college
- Collaboration with Llandovery College.

These alternative options to the current arrangement, apart from the establishment of a bilingual school at Pantycelyn, received very little support during the consultation period. The most favoured option was the establishment of one new 11-19 school in a location which would best serve the needs of the current Pantycelyn and Tre-Gib catchment areas.



A vitally important component in the development of the Authority's proposals for Dinefwr has been the requirement on the Authority to submit a series of business cases to the Welsh Assembly Government in line with the new requirement to comply with the Treasury Five Case Business Model. The Authority submitted its Strategic Outline Programme (SOP) in January 2009 which included the three school proposal with respect to Dinefwr.

The Authority's Strategic Outline Case (SOC) was submitted in December 2009 and included the proposed language categories of the three schools following a survey of parents conducted during the summer of 2009. The language categories of the proposed schools are based on evidence from the informal consultation meetings and written responses, Welsh Assembly Government Welsh Medium Education Strategy and *Iaith Pawb* and the Authority's own Welsh Education Scheme. This ensures that the schools make progress along the language continuum established by the Authority. This also ensures that the Authority complies with its statutory duty with respect to planning school places. The language categories of schools as defined by the Welsh Assembly Government and as applied to our Dinefwr proposals are described in detail on pages 24-25 of this document.

During the compilation of the Strategic Outline Case and the Outline Business Case the following investment objectives were identified and formed the basis of Carmarthenshire County Council's submission to the Welsh Assembly Government.

- To ensure that the high standards of education currently achieved within Dinefwr secondary schools are maintained and continue to rise during the period 2010 – 2016 as measured by Estyn inspection reports and a range of external examination results
- To reduce duplication of courses and to increase average size of post 16 teaching groups in Dinefwr secondary schools
- To reduce the number of surplus places in Dinefwr secondary schools
- To ensure that Dinefwr secondary schools annually operate within the allocated budget.
- To increase the number and size of Welsh medium teaching groups in all Years 7 – 13
- To reduce the number of pupils that leave Welsh first language learning programmes from KS2 through to KS4
- To increase the number and range of courses, particularly in the 14 – 19 age range, that are taught in collaboration between the schools, Coleg Sir Gâr, higher education institutions, work-based providers and the voluntary sector and to utilise the resources and expertise available within the Carmarthenshire network and neighbouring authorities.

These investment objectives remain central to Carmarthenshire's reorganisation proposals for Dinefwr.

The Authority's Outline Business Case (OBC) was submitted in May 2010 and was based on a significant amount of feasibility work by our architects and consultants. This included a preferred option with respect to the sites of the proposed schools and outline designs and costs of the new buildings, extensions and refurbishment work. The total capital cost of all the Dinefwr projects described in this document was estimated at almost £70 million at the Outline Business Case stage.

The consultants arrived at the conclusion that the current Maes Yr Yrfa site in Cefneithin is the most favourable to develop and extend as a new school for Cwm Gwendraeth. This conclusion was reached following feasibility studies and a number of possible options for the valley.

In Dyffryn Tywi the consultants initially identified a long list of 16 sites, before a short list of 7 were selected for more detailed scrutiny. As a result of this work a preferred site at Ffairfach (Love Lodge Farm) has been identified. The consultants report describes the feasibility process in Dyffryn Tywi and the factors that continually emerged as constraints to the building of a large 1,200 pupil Twenty First Century school in the area.

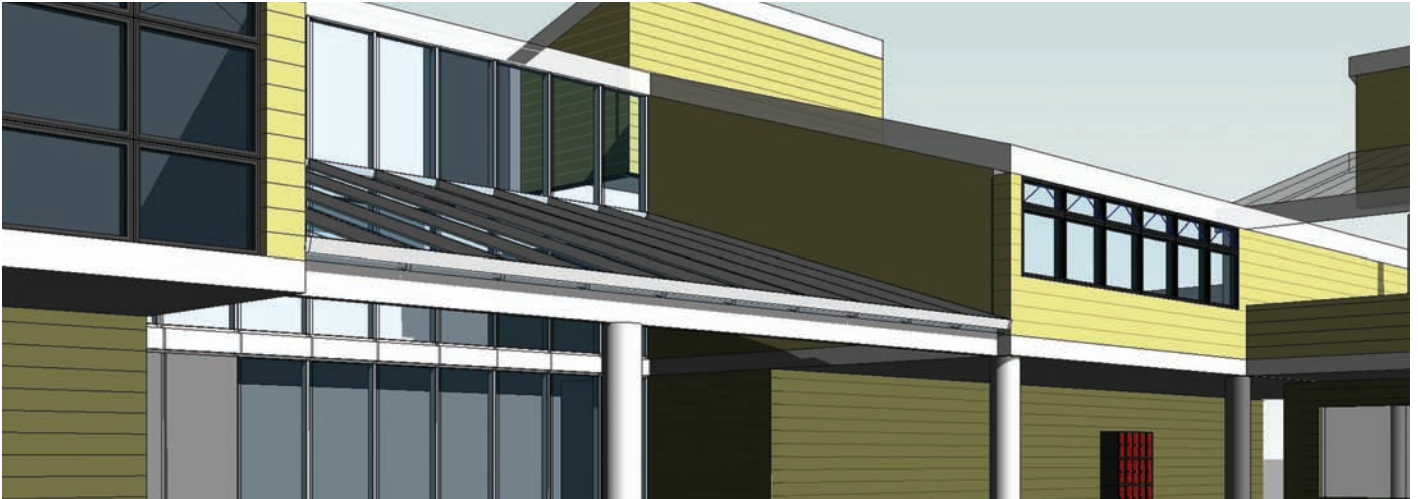
The following constraints made a significant impact on the selection process:

- Flood risk on the floor of the Tywi valley
- Unsuitable topography away from the valley floor
- The Brecon Beacons National Park constraints including the visual impact from within the park
- The planning restrictions on building a large secondary school in open country
- The constraints of building a school adjacent to the busy A40 trunk road.

In addition, once the technical analysis of all sites had been conducted, it is vitally important to bear in mind that the mean centre of gravity of the current primary pupils in the combined Pantycelyn and Tre-Gib catchment areas lies near Llandeilo. Bearing in mind that the current Tre-Gib school attracts a large number of pupils (over 200) from outside and to the south of its current catchment area, the preferred site identified on Love Lodge Farm at Ffairfach is at the demographic centre of the combined Pantycelyn and Tre-Gib catchment areas. In addition, our transport consultants have shown that average pupil travel time is less and transport costs are less for a location which is near to the demographic centre of the new catchment area than a location which is geographically central. For these reasons, in the main, the proposed new building for the new Dyffryn Tywi school is to be located at Love Lodge Farm in Ffairfach.

It is emphasised that all dates published in the remainder of this document are correct at the time of publication, but may be subject to change at a later time.





# The Proposals for Dinefwr

## 1. The Proposal for Dyffryn Tywi

To establish one new build 11 – 19 community secondary school for boys and girls to replace the existing Pantycelyn and Tre-Gib schools.

This means that this new school will have one head teacher, one budget, one staff and one governing body. This new school will be located on a greenfield site at Ffairfach (Love Lodge Farm) to the south of Llandeilo. This new school is to be a Bilingual Category 2B secondary school (see pages 24-25 for a full explanation of language categories) and will cater for 1,200 pupils in 2015. Due to Carmarthenshire County Council's proposals which affect other secondary schools in Dinefwr, and described in this booklet, the designated catchment area of this new Dyffryn Tywi school will extend beyond the current Pantycelyn and Tre-Gib schools towards the south. This new extended catchment area will be phased in with each year group from 2012 onwards.

The building of this new school will lead to the eventual closure of both the current Pantycelyn and Tre-Gib sites as secondary schools. It is proposed that the building work for the school will commence in May 2013 and the new school building will open to pupils in September 2015.

The new building and playing fields will provide the best modern facilities and resources available within the given budget. Although initial designs have been presented to the school communities, the detailed design will be finalised following further consultation and feasibility work during the next few months. The school will be designed to incorporate the very latest principles with regard to sustainability and use of resources and energy, and will aim to provide inspirational environments for pupils, staff and the wider community.

Carmarthenshire County Council propose that the current Pantycelyn and Tre-Gib schools become one new school to cater for the needs of the pupils living in both catchment areas from September 1st, 2012. Carmarthenshire County Council must then formally discontinue Pantycelyn and Tre-Gib schools on August 31st at the end of the Summer Term 2012. The existing buildings at Pantycelyn and Tre-Gib will be used to cater for the merger of the two schools during the period September 2012 – August 2015.

The current provision for pupils with Special Educational Needs in Dyffryn Tywi will be enhanced with the implementation of the Dinefwr proposals. The current provision at Garreg Lwyd, Gwendraeth will be relocated to the new Dyffryn Tywi school with increased capacity from the current 18 places to accommodate up to 30 pupils. In addition, a specialist resource base for speech and language for up to 30 pupils on a part-time basis will be established at the new school. This latter provision is currently available at Tre-Gib.

The existing buildings at the current Pantycelyn and Tre-Gib sites will be used to cater for the needs of the new school during the period September 2012 – August 2015 whilst the new building on Love Lodge Farm, Ffairfach is being built. The last intake of pupils to the current Pantycelyn and Tre-Gib sites will be in September 2014 before the opening of the new building in September 2015.

Reasons for this preferred option:

- Establish a 1,200 pupil school with a sustainable Sixth Form on a modern campus
- Establish a viable and sustainable school which can provide a range of curriculum provision through the medium of both Welsh and English
- Provide a range of high quality vocational courses in partnership with other Dinefwr schools and Coleg Sir Gâr
- Replace the current secondary schools at Pantycelyn and Tre-Gib with a state of the art Twenty-First Century school with improved educational opportunities and superior facilities
- Provide an enhanced opportunity to maximise social inclusion
- The increased viability of this one new school combined with the improved facilities will further raise educational standards in the area
- Enhance opportunities for community use

## **2. The proposal for Dyffryn Aman**

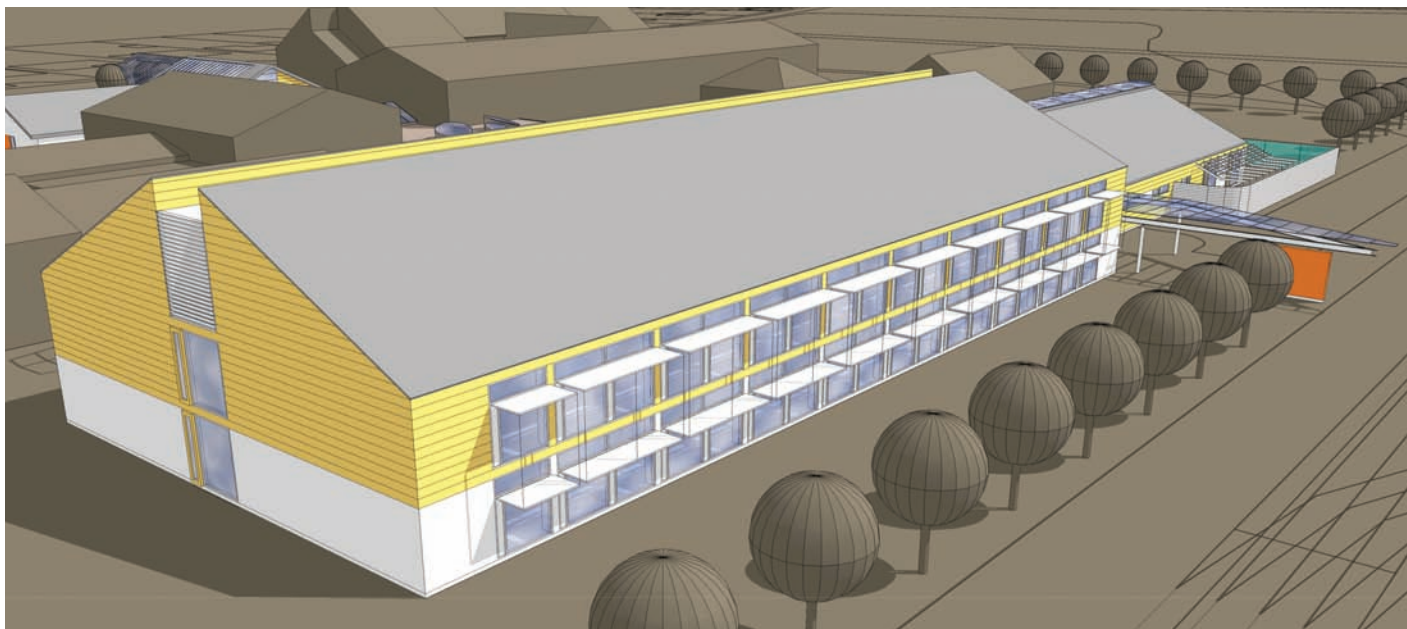
Generally Ysgol Dyffryn Aman is not included in the statutory process that is affecting the other schools in Dinefwr. The proposed changes to the main body of the school do not make it a requirement on the Authority to consult formally with stakeholders. The changes taking place to Ysgol Dyffryn Aman will affect pupils and parents in other parts of Dinefwr and these are the reasons for describing and including them in this document.

Nevertheless the proposals include providing facilities to cater for up to 24 pupils with Severe Learning Difficulties and Profound Learning Difficulties at Ysgol Dyffryn Aman. This replaces the 12 secondary places currently provided for at Ysgol Bro Banw. This proposal will enable pupils of secondary age to have their education with their peers. This element of the proposal and the way it affects Ysgol Dyffryn Aman is included in the statutory process.

Ysgol Dyffryn Aman will continue as an 11 – 19 community comprehensive school for boys and girls. The school will continue in its current form with the same head teacher, the same staff with one budget and with the current governing body. The school will cater for 1,500 pupils in September 2015. In line with other developments across Dinefwr, it is proposed that the Governing Body of the school incorporate the following changes to Ysgol Dyffryn Aman from September 2012 onwards:

- The school will become a Bilingual Category 2B secondary school
- The improved provision for pupils with Special Educational Needs at the school
- The designated catchment area of Ysgol Dyffryn Aman will extend beyond the current Dyffryn Aman catchment area towards the south into the Gwendraeth valley.

The Dyffryn Aman campus will be extensively extended and refurbished in accordance with the building standards advocated for Twenty-First Century schools. This building work will take place in various phases, whilst the school is operational, approximately during the period February 2012 to May 2014. The refurbishment will provide the best modern facilities and resources available within the given budget. Although initial designs have been presented to the school community, the proposed design will be finalised following further consultation and feasibility work during the next few months.



### **3. The proposal for Cwm Gwendraeth**

To establish one new Bilingual Category 2A 11 – 19 community secondary school for boys and girls to replace the existing Gwendraeth and Maes Yr Yrfa schools.

This means that this new school will have one head teacher, one budget, one staff and one governing body. This new school for Cwm Gwendraeth will be located on the current Maes Yr Yrfa site at Cefneithin. This new school is to be a Bilingual Category 2A secondary school and will cater for 1,000 pupils in 2015. The Dinefwr catchment area will apply to the newly established school.

The new campus in Cwm Gwendraeth on the current Maes Yr Yrfa site will be extensively extended and refurbished in accordance with the building standards advocated for Twenty-First Century schools. This building work will take place in various phases, whilst the school is operational, during the period February 2013 to April 2015. The refurbishment will provide the best modern facilities and resources available within the given budget. Although initial designs have been presented to the school community, the proposed design will be finalised following further consultation and feasibility work during the next few months.

The establishment of this new school will lead to the eventual closure of both the current Gwendraeth and Maes Yr Yrfa schools. Carmarthenshire County Council proposes that the new school for Cwm Gwendraeth be established from September 1st, 2012. Carmarthenshire County Council must then formally discontinue Gwendraeth and Maes Yr Yrfa schools on August 31st at the end of the Summer Term 2012.

The current provision for pupils with Special Educational Needs in Cwm Gwendraeth will be enhanced with the implementation of the Dinefwr proposals. The current provision at Garreg Lwyd, Gwendraeth will be relocated to the new Dyffryn Tywi school with increased capacity from the current 18 places to accommodate up to 30 pupils. In addition the current Welsh medium resource base at Maes Yr Yrfa will be extended to cater for up to 16 pupils compared to the current 8 places.

The existing buildings at the current Gwendraeth and Maes Yr Yrfa sites will be used to cater for the needs of the new school during the period September 2012 – August 2015 whilst the refurbishment work takes place on the site of the new school. The last intake of pupils to the current Gwendraeth school will be in September 2011 and these pupils will continue their education at Gwendraeth up to Year 11 in 2015. The last intake of pupils to Year 12 at Gwendraeth will be in September 2011 and the Sixth Form will end with the departure of Year 13 students during the summer of 2013. Those Gwendraeth students wishing a Sixth Form education from September 2012 onwards will be able to access this provision in a Dinefwr school according to their designated catchment school.

If these proposals are implemented, views are invited regarding the provision for Year 10 and 11 Gwendraeth pupils in 2014 and 2015. A decision needs to be made whether it is preferable for GCSE pupils to remain in their existing school base during these academic years, or whether they should transfer to another base with other pupils. The parents of these pupils may wish that their children access a learning pathway from the range of opportunities available within Dinefwr. We seek the views of parents on this issue during the consultation period.

Reasons for this preferred option:

- Establish a 1,000 pupil school with a sustainable Sixth Form on a modern campus
- Establish a viable and sustainable school which can provide a range of curriculum provision in a bilingual category 2A school
- Provide a range of high quality vocational courses in partnership with other Dinefwr schools and Coleg Sir Gâr
- Replace the current secondary schools at Gwendraeth and Maes Yr Yrfa with a Twenty-First Century school with improved educational opportunities and superior facilities
- Provide an enhanced opportunity to maximise social inclusion
- The increased viability of this one new school combined with the improved facilities will further raise educational standards in the area
- Enhance opportunities for community use.



# Transition arrangements

## 1. Dyffryn Tywi

A successful proposal will result in the Authority establishing a shadow Governing Body, to take all appropriate actions, including appointing staff, in advance of the new school being opened in September 2012. The shadow Governing Body will be formed in accordance with the statutory guidance on composition. The existing Governing Bodies of Pantycelyn and Tre-Gib schools will continue until both schools are closed at the end of the summer term 2012.

The new Dyffryn Tywi school will operate on both current Pantycelyn and Tre-Gib sites during the period 2012 and 2015 until the new school building at Ffairfach is opened in September 2015. The new shadow Governing Body will decide on the precise organisation of the new school during the transition period. This will result in as little disruption as possible. The following shows how the merger of Pantycelyn and Tre-Gib will take place between September 2012 and the opening of the new school building in September 2015. Some slight variation may take place to these proposals depending on pupil numbers.

### September 2012

- Pantycelyn Year 12 taught at Tre-Gib site
- Gwendraeth Year 12 (according to designated catchment area) taught at Tre-Gib site
- Years 7 – 11 of the current Pantycelyn catchment area taught on Pantycelyn site until the new Dyffryn Tywi school is opened on the Ffairfach site in September 2015
- Year 7 from extended catchment area in Cwm Gwendraeth admitted to new school (on Tre-Gib site)
- Years 12 from extended catchment area in Cwm Gwendraeth admitted to new school (on Tre-Gib site)
- Years 7 at new school on Pantycelyn and Tre-Gib site to be organised as a Bilingual Category 2B school.

### September 2013

- Pantycelyn Years 12 and 13 taught on Tre-Gib site
- Years 7 and 8 from extended catchment area in Cwm Gwendraeth admitted to new school (on Tre-Gib site)
- Years 12 and 13 from extended catchment area in Cwm Gwendraeth admitted to new school (on Tre-Gib site)
- Years 7 and 8 at new school on Pantycelyn and Tre-Gib site to be organised as a Bilingual Category 2B school.

### September 2014

- Pantycelyn Years 12 and 13 taught on Tre-Gib site
- Years 12 and 13 from extended catchment area in Cwm Gwendraeth admitted to new school (on Tre-Gib site)
- Years 7, 8 and 9 from extended catchment area in Cwm Gwendraeth admitted to new school (on Tre-Gib site)
- Years 7, 8 and 9 at new school on Pantycelyn and Tre-Gib sites to be organised as a Bilingual Category 2B school.

### September 2015 and subsequent years

- All Years 7 - 13 pupils to attend the new building for the Dyffryn Tywi school at the Ffairfach site
- New Special Educational Needs facilities at Dyffryn Tywi school completed
- The current Pantycelyn and Tre-Gib schools buildings become vacant on August 31st, 2015.



## 2. Dyffryn Aman

The Governing Body of Ysgol Dyffryn Aman will take all appropriate actions to implement the proposed changes to the school in advance of the Dinefwr reorganisation date of September 2012 and the proposed completion date of September 2015. This will result in as little disruption as possible.

The following shows how the re-organisation affecting other parts of Dinefwr will be reflected in the organisation of Dyffryn Aman between September 2012 and September 2015.

### September 2012

- Year 12 from extended catchment area in Cwm Gwendraeth (according to designated catchment area) admitted to Ysgol Dyffryn Aman
- Year 7 from extended catchment area in Cwm Gwendraeth admitted to Ysgol Dyffryn Aman
- Year 7 to be organised as a Bilingual Category 2B school.

### September 2013

- Years 7 and 8 from extended catchment area in Cwm Gwendraeth admitted to Ysgol Dyffryn Aman
- Years 12 and 13 from extended catchment area in Cwm Gwendraeth admitted to Ysgol Dyffryn Aman
- Years 7 and 8 to be organised as a Bilingual Category 2B school.

### September 2014

- Years 7, 8 and 9 from extended catchment area in Cwm Gwendraeth admitted to Ysgol Dyffryn Aman
- Years 12 and 13 from extended catchment area in Cwm Gwendraeth admitted to Ysgol Dyffryn Aman
- Years 7, 8 and 9 to be organised as a Bilingual Category 2B school.

### September 2015 and subsequent years

- Years 7, 8, 9 and 10 from extended catchment area in Cwm Gwendraeth admitted to Ysgol Dyffryn Aman
- Years 12 and 13 from extended catchment area in Cwm Gwendraeth admitted to Ysgol Dyffryn Aman
- Years 7, 8, 9 and 10 to be organised as a Bilingual Category 2B school.

### 3. Cwm Gwendraeth

A successful proposal will result in the Authority establishing a shadow Governing Body, to take all appropriate actions, including appointing staff, in advance of the new school being opened in September 2012. The shadow Governing Body will be formed in accordance with the statutory guidance on composition. The existing Governing Bodies of Gwendraeth and Maes Yr Yrfa schools will continue until both schools are closed at the end of the summer term 2012.

The new school in Cwm Gwendraeth will operate on both current Gwendraeth and Maes Yr Yrfa sites until the extensions and refurbishment to the new school on the current Maes Yr Yrfa site is completed in September 2014. The new shadow Governing Body will decide on the precise organisation of the new school during the transition period. This will result in as little disruption as possible. The following shows how the discontinuation of Gwendraeth as a site and the development of the new school will be phased in during the period between September 2012 and September 2015 when the re-organisation across Dinefwr will be completed.

#### September 2012

- The new Cwm Gwendraeth school confirmed as a Bilingual Category 2A school
- All current Maes Yr Yrfa pupils transfer to new Cwm Gwendraeth school
- Current Gwendraeth pupils (with the exception of those listed below) to continue with education at the Gwendraeth site managed by the new Cwm Gwendraeth school
- Year 12 Gwendraeth students taught at the new Cwm Gwendraeth school or at a Dinefwr school (according to designated catchment area)
- Year 7 Gwendraeth valley pupils transfer to new Cwm Gwendraeth school or Dinefwr catchment school
- Closure of Gwendraeth for Years 7 and 12 .

#### September 2013

- Years 12 and 13 Gwendraeth students taught at new Cwm Gwendraeth school or Dinefwr catchment school
- Years 7 and 8 Gwendraeth valley pupils transfer to new Cwm Gwendraeth school or Dinefwr catchment school
- Closure of Gwendraeth for Years 7, 8, 12 and 13.

#### September 2014

- Years 12 and 13 Gwendraeth students taught at new Cwm Gwendraeth school or Dinefwr catchment school
- Years 7, 8 and 9 Gwendraeth valley pupils transfer to new Cwm Gwendraeth school or Dinefwr catchment school
- Closure of Gwendraeth for Years 7, 8, 9, 12 and 13.

#### September 2015 and subsequent years

- Years 7, 8, 9 and 10 Gwendraeth valley pupils transfer to new Cwm Gwendraeth school or Dinefwr catchment school
- Closure of Gwendraeth for Years 7, 8, 9, 10, 12 and 13
- Year 11 complete education at Gwendraeth site (September 2011 intake)
- Gwendraeth building becomes vacant at the end of the Summer Term 2016.

# Additional Information

## Effect on the standard of education

The reorganisation of secondary education in Dinefwr will build on the very high standards currently existing in all five secondary schools. The external examination results compare very favourably with other schools in Carmarthenshire and those achieved by similar schools across Wales. Similarly Dinefwr schools have achieved well in recent Estyn inspections as shown in Table 4.

**TABLE 4: The standards achieved by the current 5 Dinefwr secondary schools as measured by Estyn inspectors during the period September 2004 – July 2010**

School/inspection date	Grade awarded by Estyn inspectors						
	KQ1	KQ2	KQ3	KQ4	KQ5	KQ6	KQ7
Pantycelyn (2005)	2	2	3	1	3	4	2
Tre-Gib (2009)	2	1	1	1	1	1	2
Dyffryn Aman (2006)	2	1	3	1	2	2	1
Maes Yr Yrfa (2010)	2	1	1	1	1	2	2
Gwendraeth (2010)	3	2	2	1	3	3	2

**The five-point scale used to represent all inspection judgements (2004-2010) is as follows:**

Grade 1 - good with outstanding features

Grade 2 - good features and no important shortcomings

Grade 3 - good features outweigh shortcomings

Grade 4 - some good features, but shortcomings in important areas

Grade 5 - many important shortcomings

**The standards assessed according to Estyn's key questions (2004-2010) are as follows:**

Key Question 1: How well do learners achieve?

Key Question 2: How effective are teaching, training and assessment?

Key Question 3: How well do the learning experiences meet the needs and interests of learners and the wider community?

Key Question 4: How well are learners cared for, guided and supported?

Key Question 5: How effective are leadership and strategic management?

Key Question 6: How well do leaders and managers evaluate and improve quality and standards?

Key Question 7: How efficient are leaders and managers in using resources?

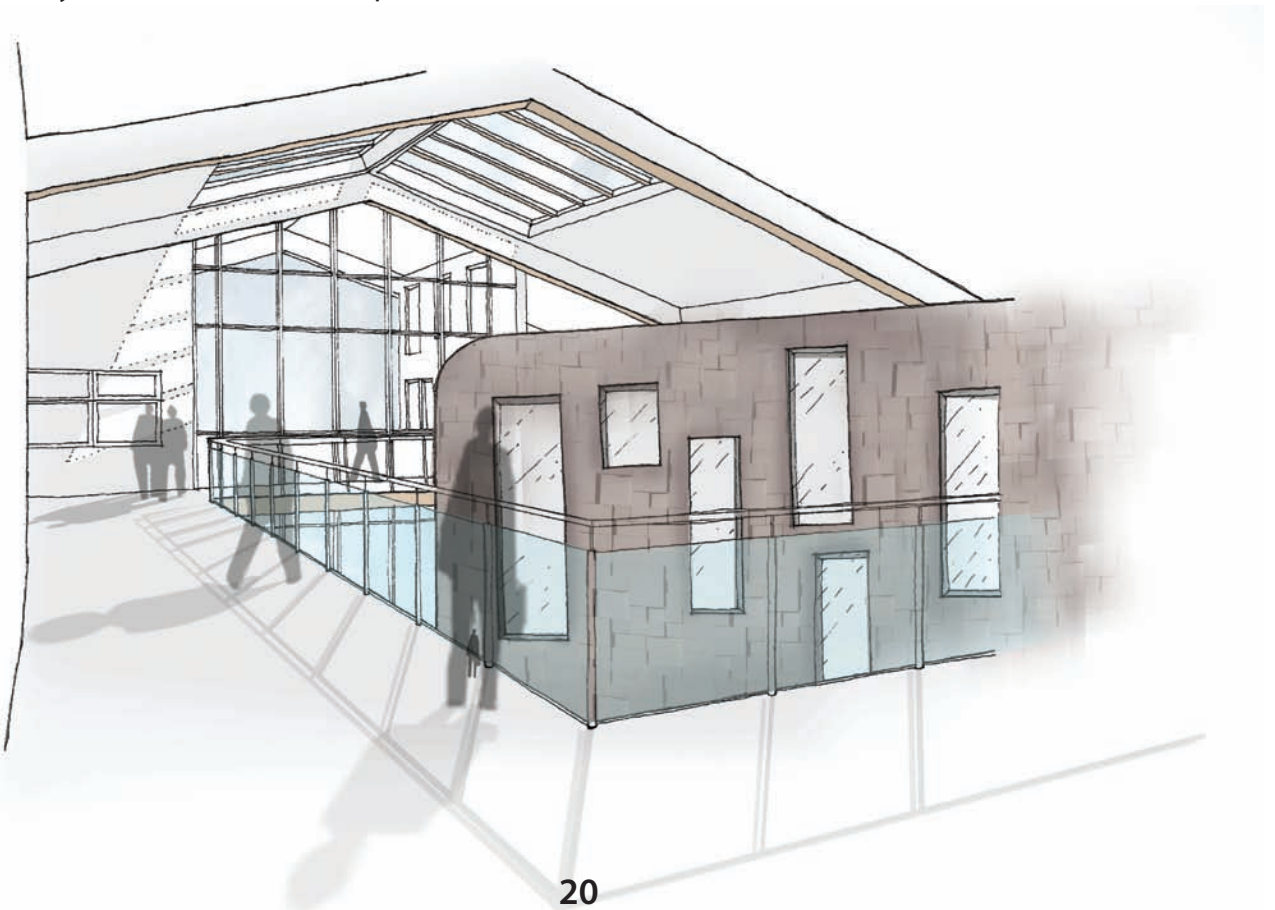
The Authority anticipates that the pupils in Dinefwr schools will perform even better after reorganisation following the investment in better facilities and improved resources. To ensure that the high standards of education currently achieved within Dinefwr secondary schools are maintained and continue to rise, as measured by Estyn inspection reports and a range of external examination results, has been included as one of the main investment objectives in our business cases.

## Provision for pupils with special educational needs

The substantial capital investment including the extensive refurbishment of the existing school at Dyffryn Aman, the new Cwm Gwendraeth school and the new build at Dyffryn Tywi includes proposals to increase and improve the Special Educational Needs provision within Dinefwr. All three schools will conform to the most recent building guidelines and as such will ensure improved accessibility to all pupils. In addition, the improved facilities will enable the schools, in collaboration with Coleg Sir Gâr and other providers, to provide a broad curriculum which will cater for the needs of all pupils.

In addition the reorganisation is allowing the Authority to improve and modify the current special educational needs provision across Dinefwr. This improved range of provision is an important component of these proposals. The following facilities will be included in the schools:

- Provide facilities for up to 30 pupils on the ASD (Autistic Spectrum Disorder) continuum in an unit at Dyffryn Tywi. This is partly the relocation and an extension of the current Garreg Lwyd provision at Gwendraeth which caters for 18 pupils.
- Provide a specialist resource base for speech and language at Dyffryn Tywi for up to 30 pupils on a part-time basis. The new school building will enable the Authority to provide purposeful and suitable facilities for pupils with Additional Learning Needs. This provision is currently available at Tre-Gib.
- Provide two classes to cater for up to 24 pupils with Severe Learning Difficulties and Profound Learning Difficulties at Dyffryn Aman. This replaces the 12 secondary places currently provided for at Ysgol Bro Banw Community Primary School.
- Provide a Welsh medium resource base at Cwm Gwendraeth by creating facilities to cater for the needs of up to 16 pupils with Severe Learning Difficulties. This extends the current facility at Maes Yr Yrfa.
- Provide a residential unit on the Gwendraeth site for 4 pupils with a range of learning needs. This facility will be planned and developed after 2015 when the building works in all three Dinefwr secondary schools has been completed.





## Catchment areas

In response to the Dinefwr reorganisation proposals the Authority has reviewed the primary and secondary catchment areas. As a result of this review minor changes have taken place to the primary catchment areas although generally the current arrangements have been retained in order to provide a sense of community and retain stability. Nevertheless with the reduction in the number of secondary schools it is inevitable that there have been some significant changes in some localities.

The transitional and future arrangements are as follows:

### Dyffryn Tywi

1. Caio, Capel Cynfab, Cilycwm, Rhys Pritchard, Llansadwrn, Llanwrda and Llangadog remain within the catchment of the Pantycelyn site until September 2015 when pupils will be transferred to the new Category 2B Dyffryn Tywi school at Ffairfach. These primary schools also become within the catchment area of the new Cwm Gwendraeth school for those preferring a Bilingual Category 2A linguistic provision.
2. Llansawel, Talley, Llandeilo, Teilo Sant, Cwmifor, Ffairfach, Llandybie, Blaenau, Penygroes, Cwrt Henri and Llanfynydd remain within the catchment of the Tre-Gib site until September 2015 when pupils will be transferred to the new Category 2B Dyffryn Tywi school at Ffairfach. These primary schools also become within the catchment area of the new Cwm Gwendraeth school for those preferring a Bilingual Category 2A linguistic provision.

## **Dyffryn Aman**

Brynaman, Y Bedol, Betws, Bro Banw, Gymraeg Rhydaman, Saron, Parcyrhun, Tycroes and Llanedi remain within the Category 2B Dyffryn Aman catchment area. These primary schools also become within the catchment area of the new Cwm Gwendraeth school for those preferring a Bilingual Category 2A linguistic provision.

## **Cwm Gwendraeth**

1. Maesybont, Cefneithin, Cross Hands, Llechyfedach, Gorslas, Llannon, Tymbl, Drefach, Pontyberem, Bancffosfelen, Llanddarog, Gwynfryn, Ponthenri, Pontiets and Carway will from September 2012 become within the catchment area of the new Cwm Gwendraeth school for those preferring a Bilingual Category 2A linguistic provision.

2. From September 2012, for those preferring a Bilingual Category 2B provision the following will apply:
- (i) Llanddarog, Maesybont and Gorslas will be within the catchment of the new Dyffryn Tywi school on the Tre-Gib site until the new building is completed in September 2015.
  - (ii) Bancffosfelen, Llannon, Drefach, Cross Hands, Cefneithin, Llechyfedach, Pontyberem, Tymbl, Gwynfryn, Ponthenri, Pontiets and Carway will be within the Dyffryn Aman catchment area.

The Transport Policy of the Council will apply in all cases and in essence means that pupils have been allocated to a designated secondary school catchment area within Dinefwr and transport will be provided to these schools, and that the Authority also recognises that in several cases the home addresses are actually nearer to schools outside Dinefwr. Transport would be provided to these secondary schools under the nearest qualification if pupils preferred those schools.

As indicated above, in keeping with the policy of the Council to provide access to a Bilingual Category 2A provision for all secondary-age pupils, all schools become within the new Cwm Gwendraeth school catchment area.

## **Transport**

School transport to and from the new schools will be provided in accordance with Carmarthenshire County Council's Transport Policy. This section on school transport should be read in conjunction with the previous section on catchment areas. The definitive statement on transport is to be found in the 'Information for Parents Booklet 2011-2012' and parents must confirm eligibility before making any decision on the choice of school.

Pupils will be transported to their Dinefwr catchment school of their choice, which may be either a Bilingual Category 2B school or a Bilingual Category 2A school, when the school is further than three miles from the home address. In addition, pupils may also be transported to a school outside Dinefwr if such a school is the nearest suitable school and is further than three miles from the home address.

The Dinefwr reorganisation proposals will result in the reduction in the number of schools and will mean that some pupils may have to travel a longer distance to school. Carmarthenshire County Council has conducted a travel impact assessment in response to these proposals and will ensure that the vast majority of pupils will have a one way journey time of less than one hour to school. This conforms to Welsh Assembly Government guidelines.



## The Welsh language and Welsh medium education

The Dinefwr proposals have been prepared in response to Carmarthenshire County Council Welsh Education Scheme and the more recently published Welsh Assembly Government’s Welsh Medium Education Strategy. The Authority has also conducted a Welsh language impact assessment whilst drafting these proposals. The proposals’ investment objectives which form an integral part of the business cases submissions have also indicated the need to further develop Welsh medium provision within Dinefwr schools. The proposals are also in response to a survey of all Years 1 to 5 primary school parents in Dinefwr conducted during the summer term 2009.

The survey was conducted as a further element of the consultation process and as a direct result of the initial informal consultation. The survey was implemented by Dinefwr primary headteachers. The parents of all Dinefwr primary school pupils in Years 1 – 5 were involved in the survey. The survey referred to the language category of schools discussed in the consultation meetings and the names of specific schools and location were not mentioned in the questionnaire.

A total of 3,750 questionnaires were distributed and 1,510 were returned, 40% of the total. Although there was some variation in the response of parents in different secondary catchment areas, across Dinefwr as a whole 34% of parents who responded showed a preference for a Bilingual Category 1/2A school whilst 66% favoured a Bilingual Category 2B school. The language categories of the schools proposed in this document reflect this survey of parents.

	Category 1	Category 2A	Category 2B
<b>Total = 1510 40% response</b>	258	262	990
	17%	17%	66%

The proposals indicate a proposed bilingual language category for each of the three schools. The new Dyffryn Tywi school is to be a Bilingual Category 2B school and replaces the current Bilingual Category 2C schools at Pantycelyn and Tre-Gib. The Dyffryn Aman school will develop from its current 2C Category to become a Bilingual Category 2B school. The new Cwm Gwendraeth school is to be a Bilingual Category 2A school and replaces the current Category 2A school at Maes Yr Yrfa and a Category 3 school at Gwendraeth.

These categories of schools as provided in the Welsh Assembly Government publication – ‘Defining schools according to Welsh medium provision : Secondary School Categories’ – are described below:

### **1. Welsh-Medium Secondary School**

**Curriculum** - All subjects (including RE and PSE) apart from English are taught through the medium of Welsh to all pupils, although some schools may introduce English terminology in one or two subjects.

**Language of the School** - Welsh is the day to day language of the school. Welsh is used as the language of communication with the pupils and for the school’s administration. The school communicates with parents in both languages.

**Outcomes** - For all pupils the normal expectation is that assessment at KS3 and KS4 will be through the medium of Welsh in all subjects apart from English or other languages, and that pupils will be able to progress easily to Welsh medium Post 16 provision.

### **2. Bilingual Secondary School**

**Curriculum** - This category has 4 sub-divisions according to the percentage of subjects taught through the medium of Welsh and whether there is parallel provision in English. The categories and definitions do not reflect the number or proportion of pupils taking advantage of provision in Welsh in a school. Governing bodies will be expected to provide information in the school prospectus on the extent to which choice of provision is available and whether access to Welsh medium provision is conditional on the level of competence the pupil has in Welsh. The prospectus should also indicate the number of pupils taking up choices of provision.

**Category 2A** - At least 80% of subjects apart from English and Welsh are taught only through the medium of Welsh to all pupils. One or two subjects are taught to some pupils in English or in both languages.

**Category 2B** - At least 80% of subjects (excluding Welsh and English) are taught through the medium of Welsh but are also taught through the medium of English.

**Category 2C** - 50 - 79% of subjects (excluding Welsh and English) are taught through the medium of Welsh but are also taught through the medium of English.

**Category 2CH** - All subjects, except Welsh and English taught to all pupils using both languages.

**Language of the School** - The day to day language or languages of the school will be determined by its linguistic context. Both languages are used to communicate with pupils and for the school’s administration. A high priority is given to creating a Welsh ethos. The school communicates with parents in both languages.

**Outcomes** - For pupils in 2A, 2B and 2C following the maximum number of courses through the medium of Welsh, the normal expectation is that assessment at KS3 and KS4 would be through the medium of Welsh in those subjects and that they would be able to progress easily to post 16 provision through the medium of Welsh in chosen subjects. For pupils in Category 2Ch the normal expectation is that assessment at KS3 and KS4 would be through the medium of Welsh in all subjects except English and that they would normally be able to progress easily to study at Post 16 through the medium of Welsh in chosen subjects.

### **3. Predominantly English medium secondary school with significant use of Welsh**

**Curriculum** - Both languages are used in teaching with 20 - 49% of subjects taught through the medium of Welsh. All subjects would normally also be taught through the medium of English.

**Language of the School** - The day to day language or languages of the school will be determined by its linguistic context. Both languages are used for communication with the pupils and for the school's administration. A high priority is given to creating a Welsh ethos. The school communicates with parents either in both languages or in English.

**Outcomes** - The normal expectation is that pupils choosing Welsh medium options could be assessed through the medium of Welsh in those subjects at all levels and may be capable of progressing to study at Post 16 through the medium of Welsh for those subjects.

#### **4. Predominantly English Medium secondary school**

**Curriculum** - Pupils are mainly taught through the medium of English. Welsh is taught as a second language up to KS4. One or two subjects (which would include Welsh first language) may be taught as an option through the medium of Welsh or using both languages.

**Language of the School** - English is the day to day language of the school, but some Welsh is also used as a language of communication with the pupils, with the aim of improving their capacity to use everyday Welsh. The school communicates with parents either in English or in both languages.

**Outcomes** - The normal expectation is that any pupils choosing Welsh medium options could be assessed through the medium of Welsh in those subjects at all levels and may be capable of progression to study at post 6 through the medium of Welsh for those subjects. Most pupils would be assessed in English in most subjects and would progress to English medium Post 16 study.

The proposed new schools will build on the excellent work achieved with respect to Welsh language teaching and Welsh medium education in Dinefwr primary schools. The new schools will continue to develop the all important bilingual skills of its pupils and work with the secondary schools to embed a 7 – 14 curriculum in order to ease the transfer from the primary to the secondary school. Schools will ensure that the language skills of primary pupils will be further developed through appropriate programmes of study in the secondary schools up to the end of Key Stage 3 and beyond. In addition the bilingual ethos and extra curricular activities of the current schools will be further developed and nurtured in the proposed new schools.

## **Learning Pathways 14 – 19 and Post-16 provision**

The Learning Pathways programme, through the Learning and Skills (Wales) Measure 2009, aims to provide new opportunities for 14 – 19 year olds. The schools' curriculum aims to provide young people with a greater choice and flexibility, particularly in vocational areas and an increased range of choices through the medium of Welsh. These courses are in addition to the more established GCSE, AS and A level courses offered by the schools. The Dinefwr cluster of secondary schools and Coleg Sir Gâr has responded to the needs of the Learning Pathways initiative over recent years. This will continue following reorganisation as improved facilities are being provided in each of the proposed three secondary schools. In addition to the construction facilities at Coleg Sir Gâr campus at Ammanford and land-based activities at Gelli Aur, improved specialist facilities to cater for the needs of all Dinefwr pupils will be developed in catering/hospitality and salon services at Dyffryn Tywi, engineering at Dyffryn Aman and public services at Cwm Gwendraeth. These specialist courses will be in addition to those developed at each individual school and Coleg Sir Gâr.

The collaboration between providers within the Dinefwr cluster described above, particularly Coleg Sir Gâr and the schools, will also be the basis for the cost-effective delivery of post-16 education. The Authority is supportive of developing post-16 education within the school setting and the reduction in

the number of school sixth forms following reorganisation will increase their size and viability in the foreseeable future. This will allow the proposed new schools to increase student choice in Welsh medium, English medium and bilingually in response to the requirements of the Learning and Skills (Wales) Measure 2009. The young people in Dinefwr schools have responded positively to the increased choice of courses in the 14 – 19 age range over recent years and it is expected that the improved provision following reorganisation will increase participation in these courses and in education in general Post 16. The Dinefwr proposals have been discussed extensively by the cluster management group and the Joint Committee of governors during recent years.

In practical terms and on a day to day basis during the 14 – 19 phase, some pupils, depending on the choice of courses, will experience their education in places other than their home school base. The schools and Coleg Sir Gâr will co-operate with the planning of courses, timetables and transport in order to maximise the use of resources and facilities for the benefit of the learners.

As a result of the use of new technologies for teaching and learning it may be possible that some individual and minority courses may well be provided outside the Dinefwr area.

## **Staffing issues**

The establishment of the new schools in Dyffryn Tywi and Cwm Gwendraeth in September 2012 will necessitate the appointment of the two head teachers well in advance of the opening date. The shadow governing bodies of the new schools will decide on the curriculum, management structure and the other major statutory policies for the new schools.

The Authority has staffing policies and procedures in respect of school reorganisation and these will be recommended for implementation in Dinefwr. The Authority's recommendation is, wherever possible, that staff employed at the point of school closure will be found mutually suitable alternative employment in the new schools. The process for selection to posts in the new school will be fully consulted upon with staff and trade unions with a view to reaching agreement.

## **Governance**

A successful proposal will result in the Authority establishing a Shadow Governing Body, to take all appropriate actions, including appointing staff, in advance of the new schools being opened in Dyffryn Tywi and Cwm Gwendraeth in September 2012. The current and existing governing bodies of the four schools affected by these statutory proposals, namely Pantycelyn, Tre-Gib, Maes Yr Yrfa and Gwendraeth will continue until the four schools are closed at the end of the summer term 2012. The membership of the Dinefwr Joint Committee of governors with representatives from the five secondary schools, Coleg Sir Gâr and the community will reflect the changes contained in these proposals.

## **Effect on other schools**

It is not envisaged that the reorganisation proposals for Dinefwr will have an effect on other schools outside the Dinefwr cluster area. The schools affected have been included in these proposals. Nevertheless, the reduction in the number of schools across Dinefwr may lead some parents in some specific parts of Cwm Gwendraeth choosing a nearer suitable school, outside the current Dinefwr cluster, in Carmarthen and Llanelli.

## Community use of school premises

The educational interests of pupils in the area is a prime concern in presenting these proposals but the enhanced facilities at Dyffryn Aman and the new school in Cwm Gwendraeth will become the focal point for community activity. In the same way the new school building in Dyffryn Tywi becomes an exciting new asset to its wider community. The new community provision in all three schools has been designed to improve access and increase usage by members of the community. The refurbishment work at Dyffryn Aman has provided an opportunity to construct a large community training barn for all field games on the site of the school. Carmarthenshire County Council has conducted a community impact assessment on the effect of these proposals and is committed to ensuring that the best alternate use be made of the buildings at Pantycelyn and Gwendraeth when the schools are discontinued. At the same time it must be emphasised that the swimming pool at Pantycelyn and the community hall and leisure centre at Gwendraeth are not affected by the closure of the schools. The Authority wishes to use this formal consultation process to invite members of the community to suggest new and innovative use of these school buildings. These suggestions may be placed on the response sheet which is provided in Appendix 1.

## Views of stakeholders and consultation with pupils, parents, staff, governors and the community

The Education Authority has consulted with its stakeholders in a large number of informal meetings and discussions over a period of about two years prior to the publication of these formal statutory proposals. This will now be followed by a series of formal consultation meetings and these details are included below.

### Time-table for consultation

Date	Stakeholder group
April 19th, 2011	Dinefwr elected members, Council Chamber, County Hall, 2pm
May 3rd, 2011	Secondary head teachers and chairs of governors, 2.00pm Primary head teachers and chairs of governors, 3.30pm
May 4th, 2011	Ysgol Dyffryn Aman governors, pupils, staff and parents and prospective parents
May 5th, 2011	Ysgol Tre-Gib governors, pupils, staff and parents and prospective parents
May 9th, 2011	Ysgol Pantycelyn governors, pupils, staff and parents and prospective parents
May 10th, 2011	Ysgol Maes Yr Yrfa governors, pupils, staff and parents and prospective parents
May 11th, 2011	Ysgol Gwendraeth governors, pupils, staff and parents and prospective parents
May 12th, 2011	Community meeting at Ysgol Tre-Gib, 7pm
May 16th, 2011	Community meeting at Ysgol Gwendraeth, 7pm

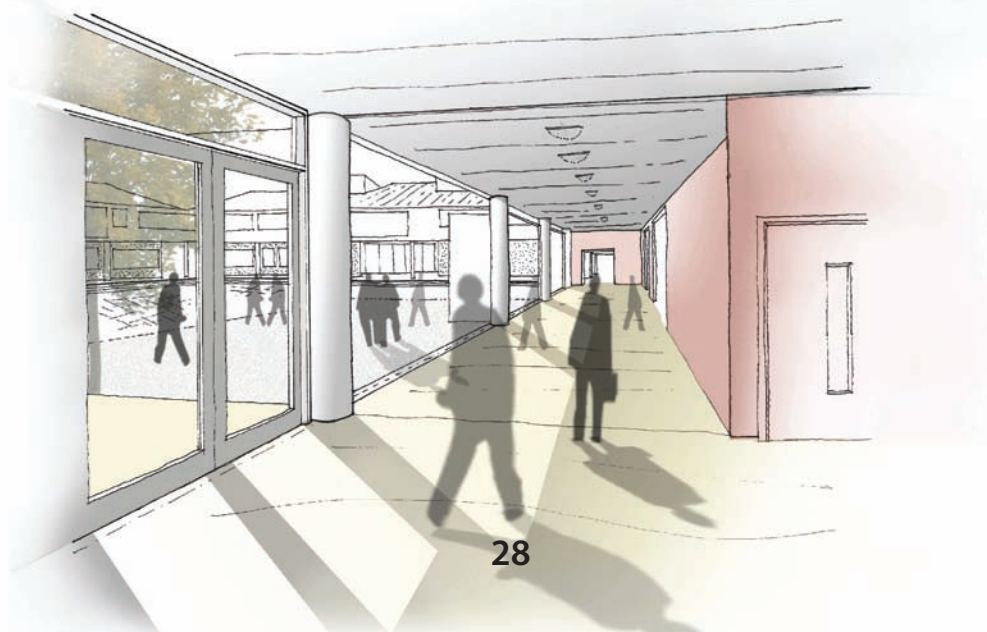
## The statutory process

Date	Process
April 2011	Consultation document produced
May 2011	Consultation meetings with all stakeholders
June 17th, 2011	Closing date for receipt of observations on the proposals to be received by Carmarthenshire County Council
July 2011	Analysis of responses to Formal Consultation document prepared for Executive Board
September 2011	Executive Board decision whether to approve publishing a statutory notice. If approved: publication of statutory notice If not approved : proposals end
October 2011	End of formal one month objection period. If there are no objections, the Executive Board of Carmarthenshire County Council will consider the proposal again and can decide to proceed with the proposals.
October 2011	Final date for objections to be forwarded to the National Assembly, where the proposal could be accepted, rejected or modified.  Decision by Welsh Assembly Government (if required)

The earliest date for the new schools to come into being will be September 2012.

## Your opportunity to respond to our proposals

We are very keen to receive as many views as possible on these Dinefwr proposals. In addition to written responses to this document we will take into account the views expressed during the consultation meetings which have been listed above. Written comments on this document may be submitted by letter or alternatively on the accompanying response sheet which can be detached from Appendix 1. These written responses should be received by the Director of Education and Children's Services (Mr. Rob Sully) no later than June 17th, 2011 at the following address : Mr. Rob Sully, Director of Education and Children's Services, Carmarthenshire County Council, County Hall, Carmarthen SA31 1JP or by e-mail to : [direct@carmarthenshire.gov.uk](mailto:direct@carmarthenshire.gov.uk)



# Appendix 1: Response sheet

Please provide us with your comments on the Dinefwr proposals.

Do you have any other issue that you wish to bring to our attention?

Your comments :

Signature .....

Print name .....

Address .....

and category .....

of respondent .....

.....

.....

.....

Please note, that unless you indicate otherwise, your comments will be open to the public as part of the formal records of the consultation.

Date .....

Please detach this form and return to: Mr. Rob Sully, Director of Education and Children's Services, Carmarthenshire County Council, County Hall, Carmarthen. SA31 1JP

# **Appendix 2: Carmarthenshire County Council documents and Welsh Assembly Government publications relevant to the proposals**

## **Carmarthenshire County Council documents available on Council website: [www.carmarthenshire.gov.uk](http://www.carmarthenshire.gov.uk)**

Tri-level Reform in the Dinefwr area of Carmarthenshire, a first strategic review for consultation. December 2008. Appendices include PAWB paper and Learning and Skills (Wales) Measure proposals for KS4.

Tri-Level Reform in the Dinefwr area of Carmarthenshire - a Report on the Informal Public Consultation, January – March 2009. May 2009.

Carmarthenshire Schools Information for Parents 2010 – 2011.

Welsh Education Scheme, Carmarthenshire County Council

## **Welsh Assembly Government publications available on WAG website: [www.wales.gov.uk](http://www.wales.gov.uk)**

Iaith Pawb: A National Action Plan for a Bilingual Wales. 2007

Skills that Work for Wales, Welsh Assembly Government, July 2008.

Defining schools according to Welsh medium provision

Learning and Skills Measure (Wales) 2009, Welsh Assembly Government, circular 021/2010

Transforming Education and Training Provision in Wales, Welsh Assembly Government, September 2008.

School Effectiveness Framework, Welsh Assembly Government, 2008.

Collaborative Arrangements between Further Education Institutions and Schools. Welsh Assembly Government, circular 007/2009, February 2009.

Learning and Skills Measure (Wales) 2009 (Proposals in earlier paper of same name, 046/2008), Welsh Assembly Government.

Welsh Medium Education Strategy, Welsh Assembly Government

Learning and Skills Measure (Wales) 2009. Local curriculum for students aged 16 to 18 guidance. Circular 021/2010. Welsh Assembly Government. July 2010

Wider choice and the learning core – progress in implementing a wider option choice and the learning core for 14-19 learners. Estyn. August 2010