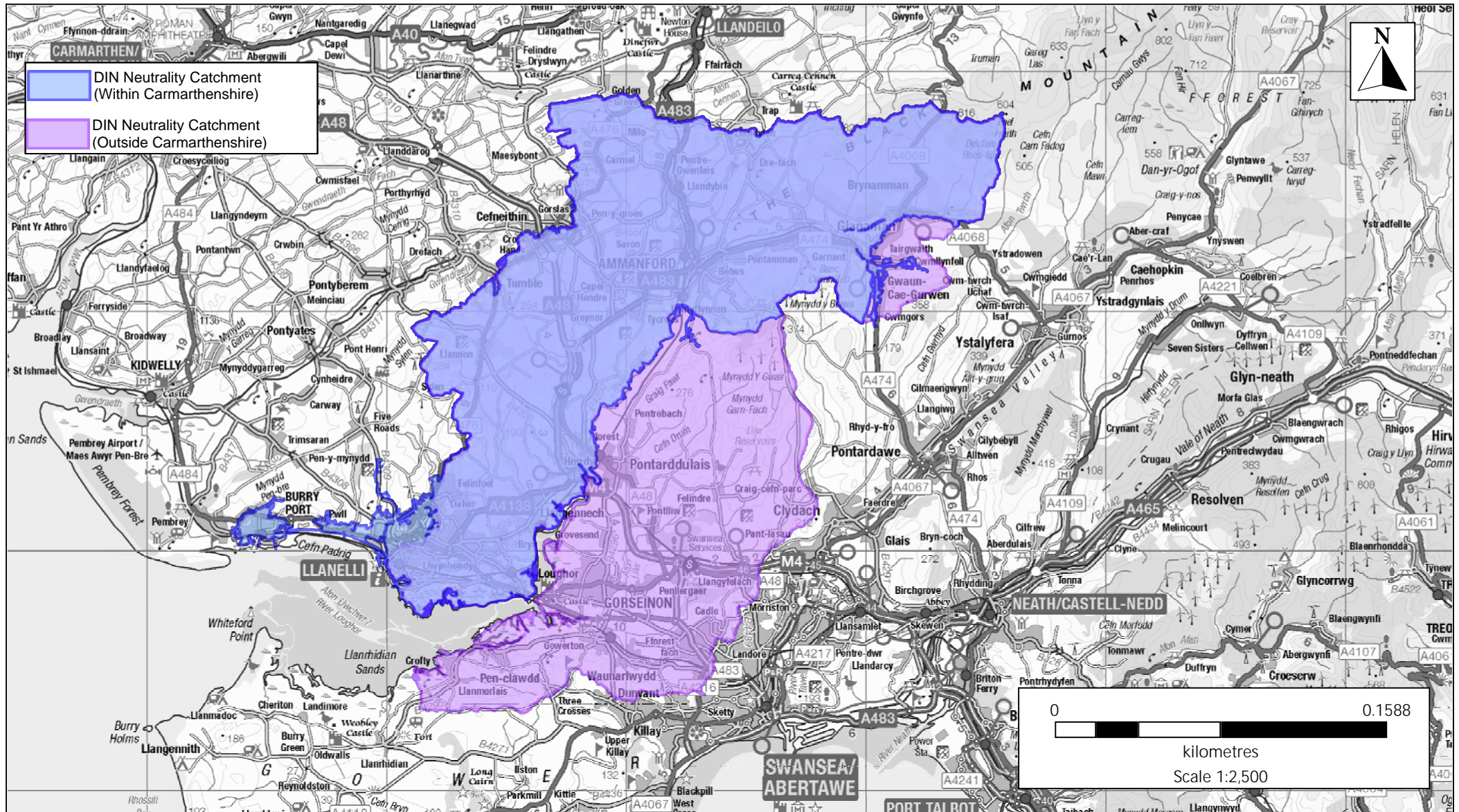


Indicative DIN Neutrality Catchment Areas – Refined Carmarthenshire and Wider NRW Zone

**The Carmarthenshire boundary is a locally refined version of the NRW Marine SAC DIN Neutrality Catchment, adjusted for the public sewerage network and clipped to the county boundary. It is to be used as a guide only. Site specific confirmation should be sought through consultation with NRW and DCWW to confirm drainage and nutrient neutrality requirements.*

Cyngor Sir Caerfyrddin
Is-Adran Lle a Chynaliadwyedd,
Adran Lle a Seilwaith
3 Heol Spilman, Caerfyrddin. SA31 1LE

Carmarthenshire County Council
Place and Sustainability Division,
Place and Infrastructure Department,
3 Spilman Street, Carmarthen. SA31 1LE



Indicative DIN Neutrality Catchment Areas – Refined Carmarthenshire and Wider NRW Zone

**The blue area shows the small part of the NRW Marine SAC DIN Neutrality Catchment (Milford Haven Inner) that lies within Carmarthenshire. No local refinement has been made using sewerage data, as there is no mains sewerage in this area. This map is provided as a guide only. Site-specific confirmation must be sought to confirm nutrient neutrality requirements.*

Cyngor Sir Caerfyrddin
Is-Adran Lle a Chynaliadwyedd,
Adran Lle a Seilwaith
3 Heol Spilman, Caerfyrddin. SA31 1LE

Carmarthenshire County Council
Place and Sustainability Division,
Place and Infrastructure Department,
3 Spilman Street, Carmarthen. SA31 1LE

