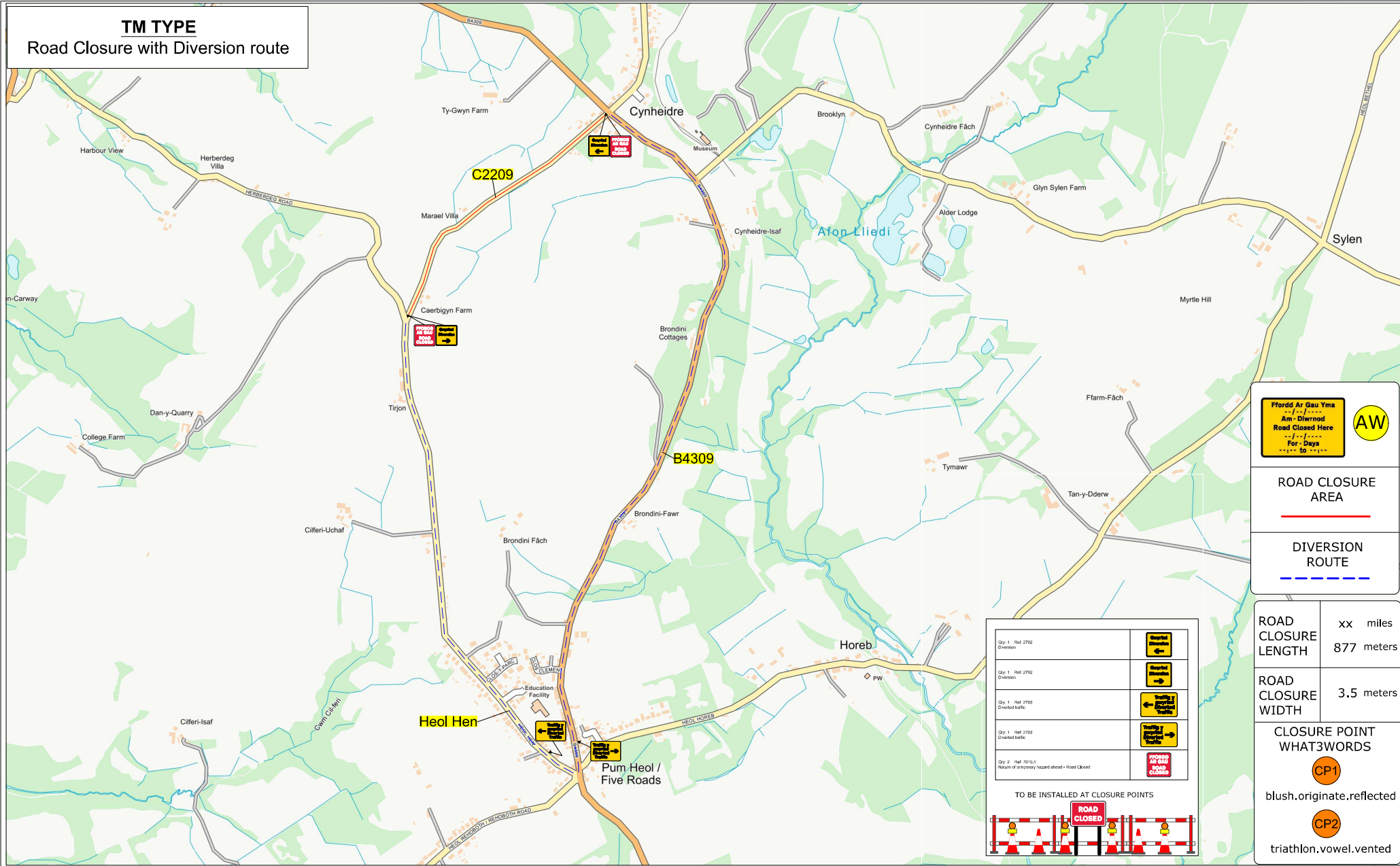


TM TYPE
Road Closure with Diversion route



Flordd Ar Gau Yma
Am - Diwrnod
Road Closed Here
For - Days

AW

ROAD CLOSURE AREA

DIVERSION ROUTE

ROAD CLOSURE LENGTH	xx miles 877 meters
ROAD CLOSURE WIDTH	3.5 meters
CLOSURE POINT WHAT3WORDS	CP1 blush.originate.reflected CP2 triathlon.vowel.vented

Qty: 1 Ref: 2702 Direction	
Qty: 1 Ref: 2702 Direction	
Qty: 1 Ref: 2703 Diverted traffic	
Qty: 1 Ref: 2703 Diverted traffic	
Qty: 2 Ref: 7010.1 Nature of temporary hazard ahead - Road Closed	

TO BE INSTALLED AT CLOSURE POINTS

Contract No	220-S012544	Client:	Openreach
Date	15/09/2025	Site Location / Drawing Title	C2209, Llanelli Rural, SA15 5YH
Drawn by	220-KF		
Approved By	220-KF		
Purpose of works	Access Network		
DWG Version No	001		
Amended By	XXX/XXX	Scale	NOT TO SCALE
Amendment Date	XX/XX/XXXX	OS Licence No	OI - xxxxxxxx
Sheet No	1 of 1		

Note

- All equipment shall be approved and shall comply with the Department of Transport specification MCE0111. This drawing does not show the normal road works signage that will be required as per Chapter 8.
- All signs to be in accordance with TSGRD 2016 and to minimum class retroreflective.
- Minimum height of lettering to be 60mm and sign boards to be 1000mm (750mm where appropriate).

The information in this drawing may not be copied or used by third parties without written consent from Sunbelt Rentals Ltd (Traffic Management).
This layout is for installation by NRSWA, Lantra 12A,12B,12C,12D qualified persons.
All works shall be in accordance with Safety at Street Works and Road Works, A Code of Practice 2013 & Chapter 8

DETAIL B

Single/Dual carriageway 400mm or less - 400mm traffic cones, spacing 1.5m.
Dual/Dual carriageway 500mm or more - 750mm traffic cones, spacing 1.5m.
Dual/Dual carriageway national speed limit - 750mm traffic cones, spacing 1.5m.
reduction 3m.

Note:
1) During darkness, warning lights to BS EN 12352:2006 should be provided in accordance with Table A1.3 (Appendix 1).
2) 45° tapered signs have 1.2m spacing, no reduction.
3) On narrow roads and 90° or 45° roads with hard shoulders, 1m cones will be required for both standard and reduction works
4) Road taper and the facing wall of these changes.

DETAIL C1

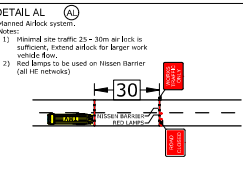
Single/Dual carriageway 400mm or less - 100mm traffic cones.
Single/Dual carriageway 500mm or more - 750mm traffic cones.

Note:
1) During darkness, warning lights to BS EN 12352:2006 should be provided in accordance with Table A1.3 (Appendix 1).
2) For reduction to Detail C1 see Table A1.3 (Appendix 1).

DETAIL C2

Single carriageway 400mm or less - 400mm traffic cones.
Single/Dual carriageway 500mm or more - 750mm traffic cones.

Note:
1) During darkness, warning lights to BS EN 12352:2006 should be provided in accordance with Table A1.3.



THIS DOCUMENT IS UNCONTROLLED WHEN PRINTED
The electronic version of this document is the approved and most current. Any printed version is uncontrolled and may not be current.

SUNBELT RENTALS
Sunbelt Rentals UK (Traffic Management)
Kemble Airfield Enterprise Park, Cirencester Road,
Kemble GL7 6BQ
Telephone: 0370 050 0792