

## **ORDER**

### **ROAD TRAFFIC REGULATION ACT 1984**

### **SECTION 16A (SPECIAL EVENTS ACT 1994)**

### **RALI CEREDIGION ALL ROADS CLOSED RALLY**

**4<sup>th</sup>, 5<sup>th</sup>, 6<sup>th</sup> and 7<sup>th</sup> SEPTEMBER 2025**

### **(CLOSURE OF VARIOUS ROADS, FOOTWAYS, GREEN LANES, PUBLIC RIGHTS OF WAY, OPERATION AND 24-HOUR CLEARWAYS) JOINT ORDER 2025**

**WHEREAS** THE CYNGOR SIR CEREDIGION COUNTY COUNCIL ('the Council') is empowered by Section 16A of the Road Traffic Regulation Act 1984 ('the Act') to make orders for the roads and lengths of road in the County of Ceredigion as described in column 1 and 2 of the Schedules hereto to be observed by pedestrians, cyclist, equestrian and vehicular traffic and for preventing the obstruction of the said lengths of road, footway, Green Lane and Public Rights of Way during periods specified in the Schedules 1, 2, 3 and 4 during the Rali Ceredigion all closed road car rally when the lengths of road are thronged or liable to be obstructed. The Order is made jointly between Ceredigion County Council, Powys County Council and Carmarthenshire County Council and with the consent of the Welsh Government.

**IT IS** proposed to hold the Rali Ceredigion All Roads Closed Rally 2025; the restrictions within the Schedules of this Order will commence at 21:00 hours on the 4<sup>th</sup> September 2025 and continue until 20:00 hours on the 7<sup>th</sup> September 2025 or as specified in the Schedules of this Order, and where appropriate signs are showing.

**AND WHEREAS** after consulting with the Police and Fire Service it is concluded that in order that the said rally may take place it is necessary to close those lengths of road as described in column 1 and 2 of Schedule 1 hereto, to impose 24 hour clearway restrictions on the lengths of road as described in column 1 and 2 of Schedule 2 and 3, to impose restrictions to all lengths of public rights of way, byways open to all traffic/bridleways as stated in column 1 and 2 of Schedule 4 on those days and between those hours as they appear in column 3 of the said Schedules.

**NOTICE** is given that the Council has agreed the following Order, with the consent of the Welsh Minister, in pursuance of the Road Traffic Regulation Act 1984 Section 16A (Special Events Act 1994) and hereby order and direct as follows :-

- 1.** In the Order:  
'carriageway' means a way constituting or comprised in a highway being a way (other than a cycle track) over which the public have a right of way for the passage of vehicles  
'layby' means any area intended for the waiting of vehicles and lying at a side of the road and separated from the carriageway by road markings of the type shown in diagram 1010 of the Traffic Signs Regulations and General Directions 2016 and  
'promoter' means the person or company that finances or organizes the event.
- 2.** Nothing in the **Order** will prevent access of the closed roads by:  
vehicles driven by the organisers and the competitors of the said Rally or persons acting on their behalf;



Ambulances and vehicles used by or on behalf of doctors, the Police, the Fire Service and Statutory Undertakers in the event of an emergency.

3. Nothing in the **Schedule 4** will prevent access of the closed Public Rights of Way by: the local authority, doctors, the Police, the Fire Service and Statutory Undertakers in the event of an emergency.
4. Alternative routes for the road closures, where available, will be signed appropriately.
5. Nothing in Schedules 1 and 2, of this Order shall apply to any vehicles, giving rise to this Order, residents in receipt of a Rali Ceredigion pass to access their properties on incidental closures, or anything done with the permission or under the direction of a police officer.

The Promoter is to:-

1. Carry out inspection of the route as defined in the Motor Race Order (Road Traffic Act 1988) and S.16A (Special Events Act 1994) Road Traffic Regulation Act 1984, two days before and two days after the Event and video footage taken to agree road condition which will be used as the measurement for any subsequent damage. The inspection is to be carried out together with a County Council highway authority representative.
2. Be responsible for carrying out repairs caused to the public highway or verge by any competing vehicle along any race stage closure or along any incidental closure which are required as a result of the Event as defined in the Motor Race Order (Road Traffic Act 1988) and S.16A (Special Events Act 1994) Road Traffic Regulation Act 1984.
3. Pay the cost of any damage to the public highway or verge caused by any other rally vehicle/machinery/equipment along any race stage closure or along any incidental road closure which are required as a result of the Event as defined in the Motor Race Order (Road Traffic Act 1988) and S.16A (Special Events Act 1994) Road Traffic Regulation Act 1984.
4. Pay the cost of any damage to the public highway or verge caused by spectators or spectator vehicles along any race stage closure or along any incidental closure or any holding area within Council owned land which are required as a result of the Event as defined in the Motor Race Order (Road Traffic Act 1988) and S.16A (Special Events Act 1994) Road Traffic Regulation Act 1984.
5. Pay the cost of any repairs to statutory undertakers' equipment or highway asset which includes, street lighting, road signs, drainage structures, traffic signals, street furniture, salt bins, which are required as a result of the Event as defined in the Motor Race Order (Road Traffic Act 1988) and S.16A (Special Events Act 1994) Road Traffic Regulation Act 1984.
6. Pay all third-party claims for any damage to private property caused by race vehicles, any vehicles/machinery/equipment associated with the rally, spectator vehicles or spectators which are required as a result of the Event as defined in the Motor Race Order (Road Traffic Act 1988) and S.16A (Special Events Act 1994) Road Traffic Regulation Act 1984.

Access for emergency vehicles will be maintained at all times during the closure. Pedestrian access to residential properties on or adjacent to the road will be permitted at safe intervals and escorted by marshals on site.



Under the direction of a police officer any vehicle causing an obstruction along a rally stage, incidental closure or clearway, as identified in the mentioned schedules, may be removed to a safe parking facility at cost to the vehicle owner.



**GIVEN** under the Common Seal of the Ceredigion County Council this ...13.... day of August Two Thousand and Twenty-Five.

The **COMMON SEAL** of CYNGOR SIR )  
**CEREDIGION COUNTY COUNCIL** )  
was hereunto affixed in the presence of )



Corporate Lead Officer  
Legal & Governance Services  
Democratic



9680

8.8



**GIVEN** under the Common Seal of Powys County Council this 7<sup>th</sup> day of August Two Thousand and Twenty-Five.

**THE COMMON SEAL of POWYS** )  
**COUNTY COUNCIL** was hereunto )  
Affixed in presence of:- )



B. Jarman  
Bethan Jarman  
Property Solicitor

21.240.



GIVEN under the Common Seal of Carmarthenshire County Council this .....7.....day of August  
Two Thousand and Twenty-Five.

THE COMMON SEAL OF CARMARTHENSHIRE  
COUNTY COUNCIL was hereunto affixed in the  
presence of:

Steven P Murphy

Steven P Murphy

Head of Law, Governance and Civil Services



19296



List of Abbreviations: **NTR**. No through Road. **N**. North. **S**. South. **E**. East. **W**. West.  
**RC**. Rali Ceredigion. **SS**. Street Stage. **IC**. Incidental Closure.

## **SCHEDULE 1.**

### **LENGTHS OF ROAD TO BE CLOSED TO VEHICULAR TRAFFIC, PEDESTRIANS, QUAD BIKES, CYCLISTS AND HORSE RIDERS \*SS Street Stage Closures. Incidental Closures**

Said roads and footways along said roads will be closed during the periods specified in Schedule 1 of this Notice, or until such times as all traffic management restriction signs have been removed.

1.

<b>Road Descriptor</b>	<b>Extent</b>	<b>Times</b>
<b><u>*Service Area</u></b> <b><u>Aberystwyth</u></b>		
<b>Boulevard St. Brieuc, Aberystwyth</b> <b>*SS Service Area</b>	<b>Length of road which extends from Boulevard St. Brieuc roundabout, N.W. for a distance of approximately 800m to its junction with Dyfed Powys Police Station access.</b> <b>SN 593807-586812</b>	<b>06:00 05/09/2025 – 20:00 07/09/2025</b>
<b><u>*SS Qualifying &amp; Shakedown - Pendam</u></b>		
<b>C1016, Ponterwyd (Street Stage Closure)</b> <b>*SS &amp; QS</b>	<b>Length of road which extends from the property known as Delmor, N.W. for a distance of approximately 6900m to its junction with the U1070.</b> <b>SN 748808-709839</b>	<b>21:00 04/09/2025 – 23:59 05/09/2025</b>
<b>C1016, Penrhyncoch (Incidental Closure)</b> <b>*SS &amp; QS</b>	<b>Length of road which extends from its junction with the U1091, E. for a distance of approximately 4150m to its junction with the U1070.</b> <b>SN 670840-709839</b>	<b>21:00 04/09/2025 – 23:59 05/09/2025</b>
<b>U1070, Goginan (Incidental Closure)</b> <b>*SS &amp; QS</b>	<b>Length of road which extends from its junction with the C1016, S.E. for a distance of approximately 1000m to its junction with the C1016.</b> <b>SN 709839-716834</b>	<b>21:00 04/09/2025 – 23:59 05/09/2025</b>



<b>U1076, Ponterwyd (Incidental Closure) *SS &amp; QS</b>	Length of road which extends from its junction with the C1016, S.W. for a distance of approximately 560m to the end of adopted road. SN 746810-743806	21:00 04/09/2025 – 23:59 05/09/2025
<b>C1016, Ponterwyd (Incidental Closure) *SS &amp; QS</b>	Length of road which extends from the property known as Delmor, S. for a distance of approximately 50m to its junction with the A44T. SN 748808-748808	21:00 04/09/2025 – 23:59 05/09/2025
<b><u>*SS1 &amp; SS8 Aberystwyth</u></b>		
<b>New Promenade, Aberystwyth (Street Stage Closure) *SS1 &amp; SS8</b>	Length of road which extends from its junction with Pier Street, S.W. for a distance of approximately 600m to its junction with South Marine Terrace. SN 581817-579814	06:00 05/09/2025 – 23:59 06/09/2025
<b>South Marine Terrace, Aberystwyth (Street Stage Closure) *SS1 &amp; SS8</b>	Length of road which extends from its junction with New Promenade, S. for a distance of approximately 150m to its junction with Quay Road. SN 579814-580812	06:00 05/09/2025 – 23:59 06/09/2025
<b>Quay Road, Aberystwyth (Street Stage Closure) *SS1 &amp; SS8</b>	Length of road which extends from its junction with South Marine Terrace, E. for a distance of approximately 37m to its junction with Harbour Road. SN 580812-580812	06:00 05/09/2025 – 23:59 06/09/2025
<b>Harbour Road, Aberystwyth (Street Stage Closure) *SS1 &amp; SS8</b>	Length of road which extends from its junction with Quay Road, N.E. for a distance of approximately 155m to its junction with Tan-Y-Cae. SN 580812-581813	06:00 05/09/2025 – 23:59 06/09/2025
<b>Tan-Y-Cae, Aberystwyth (Street Stage Closure) *SS1 &amp; SS8</b>	Length of road which extends from its junction with Harbour Road, E. for a distance of approximately 155m to its junction with Riverside Terrace. SN 581813-583813	06:00 05/09/2025 – 23:59 06/09/2025
<b>Riverside Terrace, Aberystwyth (Street Stage Closure) *SS1 &amp; SS8</b>	Length of road which extends from its junction with Tan-Y-Cae, S.E. for a distance of approximately 170m to its junction with Maesyrafon. SN 583813-584812	06:00 05/09/2025 – 23:59 06/09/2025





<b>Greenfield Street, Aberystwyth (Street Stage Closure) *SS1 &amp; SS8</b>	<b>Length of road which extends from its junction with Riverside Terrace, N.E. for a distance of approximately 160m to its junction with Park Avenue. SN 584813-585814</b>	<b>06:00 05/09/2025 – 23:59 06/09/2025</b>
<b>B4346, Marine Terrace, Aberystwyth (Southbound Lane Closure) *SS1 &amp; SS8</b>	<b>Length of road which extends from its junction with Pier Street, N.E. for a distance of approximately 225m to its junction with Terrace Road. SN 581817- 583819</b>	<b>06:00 05/09/2025 – 23:59 06/09/2025</b>
<b>B4346, Marine Terrace, Aberystwyth (Northbound Lane Closure) *SS1 &amp; SS8</b>	<b>Length of road which extends from its junction with Albert Place, S. for a distance of approximately 320m to its junction with Terrace Road. SN 583822-583819</b>	<b>06:00 05/09/2025 – 23:59 06/09/2025</b>
<b>B4346, Marine Terrace, Aberystwyth (Area Closure) *SS1 &amp; SS8</b>	<b>Length of highway which extends from outside of property number 4 Marine Terrace, N.E. for a distance of approximately 45m to outside property number 9 Marine Terrace. SN 581817-582817</b>	<b>06:00 05/09/2025 – 23:59 06/09/2025</b>
<b>King Street, Aberystwyth (Incidental Closure) SS1 &amp; SS8</b>	<b>Length of road which extends from its junction with Pier Street, S.W. for a distance of approximately 260m to its junction with New Promenade. SN 581817-579816</b>	<b>06:00 05/09/2025 – 23:59 06/09/2025</b>
<b>Castle Street, Aberystwyth (Incidental Closure) SS1 &amp; SS8</b>	<b>Length of road which extends from its junction with Upper Great Darkgate Street, N. for a distance of approximately 130m to its junction with King Street. SN 581815-581817</b>	<b>06:00 05/09/2025 – 23:59 06/09/2025</b>
<b>Laura Place, Aberystwyth (Incidental Closure) SS1 &amp; SS8</b>	<b>Length of road which extends from its junction with Upper Great Darkgate Street, N. for a distance of approximately 120m to its junction with King Street. SN 581815-580816</b>	<b>06:00 05/09/2025 – 23:59 06/09/2025</b>
<b>New Street, Aberystwyth (Incidental Closure) SS1 &amp; SS8</b>	<b>Length of road which extends from its junction with Peir Street, S.W. for a distance of approximately 100m to its junction with Laura Place. SN 581816-581816</b>	<b>06:00 05/09/2025 – 23:59 06/09/2025</b>



<b>Upper Great Darkgate Street, Aberystwyth</b> (Incidental Closure) SS1 & SS8	Length of road which extends from its junction with Great Darkgate Street (A487T), S.W. for a distance of approximately 140m to its junction with St Michael's Place. SN 582816-580815	06:00 05/09/2025 – 23:59 06/09/2025
<b>St James's Square, Aberystwyth</b> (Incidental Closure) SS1 & SS8	Length of road which extends from its junction with Princess Street, N. for a distance of approximately 45m to its junction with Upper Great Darkgate Street. SN 581815-581815	06:00 05/09/2025 – 23:59 06/09/2025
<b>St Michael's Place, Aberystwyth</b> (Incidental Closure) SS1 & SS8	Length of road which extends from its junction with Upper Great Darkgate Street, S. for a distance of approximately 45m to its junction with Vulcan Street. SN 580815-581815	06:00 05/09/2025 – 23:59 06/09/2025
<b>Vulcan Street, Aberystwyth</b> (Incidental Closure) SS1 & SS8	Length of road which extends from its junction with High Street, S.W. for a distance of approximately 80m to its junction with Penmaesglas Road. SN 581815-580814	06:00 05/09/2025 – 23:59 06/09/2025
<b>Sea View Place, Aberystwyth</b> (Incidental Closure) SS1 & SS8	Length of road which extends from its junction with Penmaesglas Road, S.W. for a distance of approximately 140m to its junction with South Road. SN 580814-580814	06:00 05/09/2025 – 23:59 06/09/2025
<b>Prospect Street, Aberystwyth</b> (Incidental Closure) SS1 & SS8	Length of road which extends from its junction with Vulcan Street, S. for a distance of approximately 105m to its junction with South Road. SN 581815-581814	06:00 05/09/2025 – 23:59 06/09/2025
<b>Penmaesglas Road, Aberystwyth</b> (Incidental Closure) SS1 & SS8	Length of road which extends from its junction with Vulcan Street, S. for a distance of approximately 75m to its junction with South Road. SN 580814-581814	06:00 05/09/2025 – 23:59 06/09/2025
<b>Custom House Street, Aberystwyth</b> (Incidental Closure) SS1 & SS8	Length of road which extends from its junction with Penmaesglas Road, S.W. for a distance of approximately 75m to its junction with South Road. SN 580814-580814	06:00 05/09/2025 – 23:59 06/09/2025



**South Road,  
Aberystwyth**  
(Incidental Closure)  
SS1 & SS8

Length of road which extends from its junction with South Marine Terrace, E. for a distance of approximately 240m to its junction with High Street.  
SN 579814-582813

06:00 05/09/2025 –  
23:59 06/09/2025

**Quay Road,  
Aberystwyth**  
(Incidental Closure)  
SS1 & SS8

Length of road which extends from its junction with South Road, S. for a distance of approximately 135m to its junction with Harbour Road.  
SN 580814-580814

06:00 05/09/2025 –  
23:59 06/09/2025

**Rheidol Terrace,  
Aberystwyth**  
(Incidental Closure)  
SS1 & SS8

Length of road which extends from its junction with South Road, S. for a distance of approximately 75m to the end of adopted road.  
SN 580814-580813

06:00 05/09/2025 –  
23:59 06/09/2025

**Riverside Terrace,  
Aberystwyth**  
(Incidental Closure)  
SS1 & SS8

Length of road which extends from its junction with Tan-Y-Cae, N.E. for a distance of approximately 35m to its junction with Mill Street (A487T).  
SN 583813-583813

06:00 05/09/2025 –  
23:59 06/09/2025

**Glyndwr Road,  
Aberystwyth**  
(Incidental Closure)  
SS1 & SS8

Length of road which extends from its junction with Park Avenue, S.W. for a distance of approximately 40m to the end of adopted road.  
SN 584814-584814

06:00 05/09/2025 –  
23:59 06/09/2025

**Maesyrafon,  
Aberystwyth**  
(Incidental Closure)  
SS1 & SS8

Length of road which extends from its junction with Riverside Terrace, N.E. for a distance of approximately 100m to the end of adopted road.  
SN 584812-585813

06:00 05/09/2025 –  
23:59 06/09/2025

**\*SS2 & SS5**  
**Cwm Elan –**  
**Powys & Ceredigion**

**C1204**  
**Cwm Elan**  
**(Street Stage**  
**Closure)**  
**\*SS2 & SS5**

Length of road which extends from its junction with C1206, for a distance of approximately 5218m in a north westerly direction.  
SN 905716-866746

18:00 05/09/2025 –  
23:59 06/09/2025

**C1206**  
**Cwm Elan**  
**(Street Stage**  
**Closure)**  
**\*SS2 & SS5**

Length of road which extends from its junction with C1204, for a distance of approximately 12588m to Garreg Ddu Dam.  
SN 905716-911640

18:00 05/09/2025 –  
23:59 06/09/2025



<b>C1204 Cwm Elan</b> (Incidental Closure) *SS2 & SS5	Length of road which extends from a point 5218m north west of the C1206, for a distance of approximately 1978m to the County Boundary. SN 866746-853757	18:00 05/09/2025 – 23:59 06/09/2025
<b>C1204 Cwm Elan</b> (Incidental Closure) *SS2 & SS5	Length of road which extends from its junction of the C1206, for a distance of approximately 6885m to its junction with C1228. SN 905716-959683	18:00 05/09/2025 – 23:59 06/09/2025
<b>U1551 Cwm Elan</b> (Incidental Closure) *SS2 & SS5	Length of road which extends from its junction of the C2106 for its entire length SN 892686-894686	18:00 05/09/2025 – 23:59 06/09/2025
<b>U1534 Cwm Elan</b> (Incidental Closure) *SS2 & SS5	Length of road which extends from its junction with C2106, for its entire length SN 915665-912676	18:00 05/09/2025 – 23:59 06/09/2025
<b>C1118, Cwmystwyth</b> (Incidental Closure) *SS2 & SS5	Length of road which extends from the layby 250m N.E of the property known as Bwlchgwynt, E. for a distance of approximately 6020m to the County boundary. SN 799743-583757	18:00 05/09/2025 – 23:59 06/09/2025
<b><u>*SS3 &amp; SS6 Y Diafol – Powys, Ceredigion, &amp; Carmarthenshire</u></b>		
<b>U0009 Y Diafol</b> (Street Stage Closure) *SS3 & SS6	Length of road which extends from spur off U0009 to Ceredigion. for a distance of approximately 5550m in a south easterly direction. SN 805537-816501	18:00 05/09/2025 – 23:59 06/09/2025
<b>U1516, Llanddewi Brefi</b> (Street Stage Closure) *SS3 & SS6	Length of road which extends from the County boundary, W. for a distance of approximately 2640m to its junction with the U1511. SN 804537-784534	18:00 05/09/2025 – 23:59 06/09/2025
<b>U1511, Tregaron</b> (Street Stage Closure) *SS3 & SS6	Length of road which extends from its junction with the U1516, N. for a distance of approximately 5260m to its junction with the C1240. SN 784534-763575	18:00 05/09/2025 – 23:59 06/09/2025





<b>C1240, Tregaron (Street Stage Closure) *SS3 &amp; SS6</b>	<b>Length of road which extends from its junction with the U1511, E. for a distance of approximately 4680m to the County boundary. SN 763575-803571</b>	<b>18:00 05/09/2025 – 23:59 06/09/2025</b>
<b>C0002 Y Diafol (Street Stage Closure) *SS3 &amp; SS6</b>	<b>Length of road which extends from its junction with the C0004 for a distance of approximately 7948m to County Boundary. SN 854527-803571</b>	<b>18:00 05/09/2025 – 23:59 06/09/2025</b>
<b>C0004 Y Diafol (Street Stage Closure) *SS3 &amp; SS6</b>	<b>Length of road which extends from its junction with the C0002 for its entire length to its junction with A483(T). SN 854527-918512</b>	<b>18:00 05/09/2025 – 23:59 06/09/2025</b>
<b>C1240, Tregaron, (Incidental Closure) *SS3 &amp; SS6</b>	<b>Length of road which extends from its junction with the U1511, W. for a distance of approximately 2820m to its junction with the Forestry Commission (Cwm Berwyn). SN 763575-739577</b>	<b>18:00 05/09/2025 – 23:59 06/09/2025</b>
<b>C0005 Y Diafol (Incidental Closure) *SS3 &amp; SS6</b>	<b>Length of road which extends from its junction with the C0004. for a distance of approximately 496m to the river bridge. SN 912512-916519</b>	<b>18:00 05/09/2025 – 23:59 06/09/2025</b>
<b>U0009 Y Diafol (Incidental Closure) *SS3 &amp; SS6</b>	<b>Length of road which extends from its junction with C0002 for a distance of approximately 2791m to its spur off U0009 to Ceredigion. SN 811562-805537</b>	<b>18:00 05/09/2025 – 23:59 06/09/2025</b>
<b>U4174 Carmarthenshire (Incidental Closure) *SS3 &amp; SS6</b>	<b>Length of road which extends from its junction with the C2163 (from Rhandirmwyn) for a distance of 6.2km to the County Boundary. SN 793481-804489</b>	<b>18:00 05/09/2025 – 23:59 06/09/2025</b>
<b>C0002 Y Diafol (Incidental Closure) *SS3 &amp; SS6</b>	<b>Length of road which extends from its junction with C0004 for a distance of approximately 2571m in a south easterly direction. SN 854527-856506</b>	<b>18:00 05/09/2025 – 23:59 06/09/2025</b>
<b>U0009 Y Diafol (Incidental Closure) *SS3 &amp; SS6</b>	<b>Length of road which extends from a point 4.096km from the Country Boundary for a distance of approximately 4096m to the County Boundary. SN 816501-804489</b>	<b>18:00 05/09/2025 – 23:59 06/09/2025</b>



**\*SS4 & SS7**  
**Mydroilyn**

<b>B4342C, Dihewyd (Street Stage Closure) *SS4 &amp; SS7</b>	<b>Length of road which extends from its junction with the C1053, W. for a distance of approximately 3660m to its junction with the C1015. SN 488556-458552</b>	<b>18:00 05/09/2025 – 23:59 06/09/2025</b>
<b>C1015, Mydroilyn (Street Stage Closure) *SS4 &amp; SS7</b>	<b>Length of road which extends from its junction with the B4342C, S.E. for a distance of approximately 3000m to its junction with the C1185. SN 458552-477531</b>	<b>18:00 05/09/2025 – 23:59 06/09/2025</b>
<b>C1185, Dihewyd (Street Stage Closure) *SS4 &amp; SS7</b>	<b>Length of road which extends from its junction with the C1015, S.W. for a distance of approximately 3000m to its junction with the C1144. SN 477531-470520</b>	<b>18:00 05/09/2025 – 23:59 06/09/2025</b>
<b>C1144, Gorsgoch (Street Stage Closure) *SS4 &amp; SS7</b>	<b>Length of road which extends from its junction with the C1185, S. for a distance of approximately 1630m to its junction with the B4338. SN 470520-476507</b>	<b>18:00 05/09/2025 – 23:59 06/09/2025</b>
<b>B4338, Gorsgoch (Street Stage Closure) *SS4 &amp; SS7</b>	<b>Length of road which extends from its junction with the C1144, W. for a distance of approximately 3280m to its junction with the C1111. SN 476507-448516</b>	<b>18:00 05/09/2025 – 23:59 06/09/2025</b>
<b>C1111, Talgarreg (Street Stage Closure) *SS4 &amp; SS7</b>	<b>Length of road which extends from its junction with the B4338, N.W. for a distance of approximately 1500m to its junction of the U5192. SN 448516-436525</b>	<b>18:00 05/09/2025 – 23:59 06/09/2025</b>
<b>B4342C, Dihewyd (Incidental Closure) *SS4 &amp; SS7</b>	<b>Length of road which extends from its junction with the U5353, W. for a distance of approximately 3710m to its junction with the C1053. SN 524558-488556</b>	<b>18:00 05/09/2025 – 23:59 06/09/2025</b>
<b>U5354, Dihewyd (Incidental Closure) *SS4 &amp; SS7</b>	<b>Length of road which extends from its junction with the B4342C, N.E. for a distance of approximately 1295m to the end of adopted road. SN 501556-511564</b>	<b>18:00 05/09/2025 – 23:59 06/09/2025</b>



<b>U5355, Dihewyd</b> (Incidental Closure) <b>*SS4 &amp; SS7</b>	Length of road which extends from its junction with the B4342C, N. for a distance of approximately 1390m to its junction of the U5184. SN 496556-498570	18:00 05/09/2025 – 23:59 06/09/2025
<b>U5184, Dihewyd</b> (Incidental Closure) <b>*SS4 &amp; SS7</b>	Length of road which extends from its junction with the U5184, N. for a distance of approximately 375m to its junction of the B4339. SN 498570-497573	18:00 05/09/2025 – 23:59 06/09/2025
<b>B4339, Cilliau Aeron</b> (Incidental Closure) <b>*SS4 &amp; SS7</b>	Length of road which extends from its junction of the B4342C, N.E. for a distance of approximately 2920m to its junction with the U5182. SN 486558-501581	18:00 05/09/2025 – 23:59 06/09/2025
<b>U5183, Cilliau Aeron</b> (Incidental Closure) <b>*SS4 &amp; SS7</b>	Length of road which extends from its junction with the B4339, N.W. for a distance of approximately 1560m to the end of adopted road. SN 492569-483577	18:00 05/09/2025 – 23:59 06/09/2025
<b>C1107, Dihewyd</b> (Incidental Closure) <b>*SS4 &amp; SS7</b>	Length of road which extends from its junction with the B4342C, N.W. for a distance of approximately 2250m to its junction with the U5179. SN 486558-478578	18:00 05/09/2025 – 23:59 06/09/2025
<b>C1053, Dihewyd</b> (Incidental Closure) <b>*SS4 &amp; SS7</b>	Length of road which extends from its junction with the B4342C, S. for a distance of approximately 3725m to its junction with the C1015. SN 488556-499522	18:00 05/09/2025 – 23:59 06/09/2025
<b>C1083, Dihewyd</b> (Incidental Closure) <b>*SS4 &amp; SS7</b>	Length of road which extends from its junction with the C1053, S.E. for a distance of approximately 4375m to its junction with the U5353. SN 490553-519524	18:00 05/09/2025 – 23:59 06/09/2025
<b>U5352, Dihewyd</b> (Incidental Closure) <b>*SS4 &amp; SS7</b>	Length of road which extends from its junction with the C1083, N. for a distance of approximately 725m to the end of adopted road. SN 511538-521544	18:00 05/09/2025 – 23:59 06/09/2025
<b>C1185, Dihewyd</b> (Incidental Closure) <b>*SS4 &amp; SS7</b>	Length of road which extends from its junction with the B4342C, S. for a distance of approximately 2930m to its junction with the C1015. SN 485556-480560	18:00 05/09/2025 – 23:59 06/09/2025



<b>U5185, Dihewyd</b> (Incidental Closure) <b>*SS4 &amp; SS7</b>	Length of road which extends from its junction with the B4342C, S. for a distance of approximately 900m to the end of adopted road. SN 482555-478548	18:00 05/09/2025 – 23:59 06/09/2025
<b>C1015, Cribyn</b> (Incidental Closure) <b>*SS4 &amp; SS7</b>	Length of road which extends from its junction with the C1185, S.E. for a distance of approximately 4805m to its junction with the C1018. SN 477531-518512	18:00 05/09/2025 – 23:59 06/09/2025
<b>U5180, Dihewyd</b> (Incidental Closure) <b>*SS4 &amp; SS7</b>	Length of road which extends from its junction with the B4342C, N. for a distance of approximately 2380m to its junction with the C1017. SN 471558-466575	18:00 05/09/2025 – 23:59 06/09/2025
<b>B4342C, Mydroilyn</b> (Incidental Closure) <b>*SS4 &amp; SS7</b>	Length of road which extends from its junction with the C1015, N.W. for a distance of approximately 490m to its junction with the C1146. SN 458552-455555	18:00 05/09/2025 – 23:59 06/09/2025
<b>Caer Gof, Mydroilyn</b> (Incidental Closure) <b>*SS4 &amp; SS7</b>	Length of road which extends from its junction with the B4342C, N.E. for a distance of approximately 50m to the end of adopted road. SN 456553-457554	18:00 05/09/2025 – 23:59 06/09/2025
<b>Bro Mydyr, Mydroilyn</b> (Incidental Closure) <b>*SS4 &amp; SS7</b>	Length of road which extends from its junction with the B4342C, S. for a distance of approximately 105m to the end of adopted road. SN 457552-457551	18:00 05/09/2025 – 23:59 06/09/2025
<b>U5188, Mydroilyn</b> (Incidental Closure) <b>*SS4 &amp; SS7</b>	Length of road which extends from its junction with the B4342C, S.W. for a distance of approximately 1260m to its junction with the C1108. SN 457552-447544	18:00 05/09/2025 – 23:59 06/09/2025
<b>U5186, Mydroilyn</b> (Incidental Closure) <b>*SS4 &amp; SS7</b>	Length of road which extends from its junction with the C1015, S. for a distance of approximately 3010m to its junction with the C1108. SN 459551-456524	18:00 05/09/2025 – 23:59 06/09/2025





<b>U5187, Mydroilyn</b> (Incidental Closure) <b>*SS4 &amp; SS7</b>	Length of road which extends from its junction with the C1015, W. for a distance of approximately 1805m to its junction with the U5186. SN 471540-460539	18:00 05/09/2025 – 23:59 06/09/2025
<b>C1185, Gorsgoch</b> (Incidental Closure) <b>*SS4 &amp; SS7</b>	Length of road which extends from its junction with the C1144, S.W. for a distance of approximately 1625m to its junction with the C1108. SN 470520-457511	18:00 05/09/2025 – 23:59 06/09/2025
<b>C1108, Mydroilyn</b> (Incidental Closure) <b>*SS4 &amp; SS7</b>	Length of road which extends from its junction with the B4338, N. for a distance of approximately 4970m to its junction with the C1057. SN 457509-442554	18:00 05/09/2025 – 23:59 06/09/2025
<b>C1072, Gorsgoch</b> (Incidental Closure) <b>*SS4 &amp; SS7</b>	Length of road which extends from the B4338, S.W. for a distance of approximately 2365m to its junction with the U5304. SN 457509-442491	18:00 05/09/2025 – 23:59 06/09/2025
<b>B4338, Talgarreg</b> (Incidental Closure) <b>*SS4 &amp; SS7</b>	Length of road which extends from its junction with the C1144, E. for a distance of approximately 705m to its junction with the U5348. SN 476507-483506	18:00 05/09/2025 – 23:59 06/09/2025
<b>B4338, Talgarreg</b> (Incidental Closure) <b>*SS4 &amp; SS7</b>	Length of road which extends from its junction with the C1111, S.E. for a distance of approximately 1565m to its junction with the U5192. SN 448516-434510	18:00 05/09/2025 – 23:59 06/09/2025
<b>U5192, Talgarreg</b> (Incidental Closure) <b>*SS4 &amp; SS7</b>	Length of road which extends from its junction with the C1111, S. for a distance of approximately 1535m to its junction with the B4338. SN 436525-434510	18:00 05/09/2025 – 23:59 06/09/2025
<b>C1111, Talgarreg</b> (Incidental Closure) <b>*SS4 &amp; SS7</b>	Length of road which extends from its junction of the U5192, N.W. for a distance of approximately 235m to its junction with the U5189. SN 434510-435527	18:00 05/09/2025 – 23:59 06/09/2025
<b>U5189, Talgarreg</b> (Incidental Closure) <b>*SS4 &amp; SS7</b>	Length of road which extends from its junction with the C1111, W. for a distance of approximately 1750m to its junction with the B4338. SN 435527-418530	18:00 05/09/2025 – 23:59 06/09/2025



**\*SS9 & SS11**  
**Nant-Y-Moch**

<b>C1142, Ponterwyd (Street Stage Closure) *SS9 &amp; SS11</b>	<b>Length of road which extends from its junction with the A44T, N. for a distance of approximately 4275m to its junction with the U1062. SN 751811-758849</b>	<b>18:00 06/09/2025 – 20:00 07/09/2025</b>
<b>U1062, Ponterwyd (Street Stage Closure) *SS9 &amp; SS11</b>	<b>Length of road which extends from its junction with the C1142, N. for a distance of approximately 1525m to its junction with the U1090. SN 758849-762864</b>	<b>18:00 06/09/2025 – 20:00 07/09/2025</b>
<b>U1090, Talybont (Street Stage Closure) *SS9 &amp; SS11</b>	<b>Length of road which extends from its junction with the U1062, N.W. for a distance of approximately 9295m to its junction with the U1086. SN 762864-723909</b>	<b>18:00 06/09/2025 – 20:00 07/09/2025</b>
<b>U1086, Talybont (Incidental Closure) *SS9 &amp; SS11</b>	<b>Length of road which extends from its junction with the U1090, S.W. for a distance of approximately 3805m to its junction with the U1048. SN 723909-693900</b>	<b>18:00 06/09/2025 – 20:00 07/09/2025</b>
<b>U1048, Talybont (Incidental Closure) *SS9 &amp; SS11</b>	<b>Length of road which extends from its junction with the U1086, W. for a distance of approximately 3705m to its junction with the C1019. SN 693900-658893</b>	<b>18:00 06/09/2025 – 20:00 07/09/2025</b>
<b>U1062, Ponterwyd (Incidental Closure) *SS9 &amp; SS11</b>	<b>Length of road which extends from its junction with the U1090, N. for a distance of approximately 2245m to the property known as Maesnant. SN 762864-774879</b>	<b>18:00 06/09/2025 – 20:00 07/09/2025</b>
<b>U1077, Ponterwyd (Incidental Closure) *SS9 &amp; SS11</b>	<b>Length of road which extends from its junction with the A44T, N. for a distance of approximately 735m to the end of adopted road. SN 751812-755818</b>	<b>18:00 06/09/2025 – 20:00 07/09/2025</b>
<b>Un-named Road, Ponterwyd (Incidental Closure) *SS9 &amp; SS11</b>	<b>Length of road which extends from its junction with the C1142, S. for a distance of approximately 460m to its junction with the A44T. SN 749812-749808</b>	<b>18:00 06/09/2025 – 20:00 07/09/2025</b>



**\*SS10 & SS12**  
**Mynnydd Bach**

U1162, Llanfihangel-Y- Creuddyn (Street Stage Closure) *SS10 & SS12	Length of road which extends from its junction with the C1055, E. for a distance of approximately 4660m to its junction with the C1043. SN 665761-707765	18:00 06/09/2025 – 20:00 07/09/2025
C1043, Trisant (Street Stage Closure) *SS10 & SS12	Length of road which extends from its junction with the U1162, S.E. for a distance of approximately 1180m to its junction with the U1160. SN 707765-714758	18:00 06/09/2025 – 20:00 07/09/2025
U1160, Trisant (Street Stage Closure) *SS10 & SS12	Length of road which extends from its junction with the C1043, N.E. for a distance of approximately 785m to its junction with the C1145. SN 714758-718765	18:00 06/09/2025 – 20:00 07/09/2025
C1145, Devils Bridge (Street Stage Closure) *SS10 & SS12	Length of road which extends from its junction with the U1160, E. for a distance of approximately 1820m to its junction with the B4343. SN 718765-735764	18:00 06/09/2025 – 20:00 07/09/2025
B4343, Devils Bridge (Street Stage Closure) *SS10 & SS12	Length of road which extends from its junction with the C1145, S. for a distance of approximately 4775m to its junction with the B4574. SN 735764-750733	18:00 06/09/2025 – 20:00 07/09/2025
B4574, Pontrhydygroes (Street Stage Closure) *SS10 & SS12	Length of road which extends from its junction with the B4343, E. for a distance of approximately 2580m to its junction with the C1151. SN 750733-771740	18:00 06/09/2025 – 20:00 07/09/2025
C1151, Cwmystwyth (Street Stage Closure) *SS10 & SS12	Length of road which extends from its junction with the B4574, N. for a distance of approximately 1215m to its junction with the B4574. SN 771740-773750	18:00 06/09/2025 – 20:00 07/09/2025
B4574, Cwmystwyth (Street Stage Closure) *SS10 & SS12	Length of road which extends from its junction with the C1151, N.W. for a distance of approximately 990m to its junction with the Forestry Commission (Devils Bridge). SN 773750-765755	18:00 06/09/2025 – 20:00 07/09/2025



<b>U1157, Llanfihangel-Y- Creuddyn</b> (Incidental Closure) <b>*SS10 &amp; SS12</b>	Length of road which extends from its junction with the U1162, N.E. for a distance of approximately 900m to the end of adopted road. SN 675762-681767	18:00 06/09/2025 – 20:00 07/09/2025
<b>C1043, Trisant</b> (Incidental Closure) <b>*SS10 &amp; SS12</b>	Length of road which extends from its junction with the U1162, N. for a distance of approximately 1105m to its junction with the A4120. SN 707765-708776	18:00 06/09/2025 – 20:00 07/09/2025
<b>C1045, Trisant</b> (Incidental Closure) <b>*SS10 &amp; SS12</b>	Length of road which extends from its junction with the C1043, E. for a distance of approximately 1065m to its junction with the U1160. SN 708764-718765	18:00 06/09/2025 – 20:00 07/09/2025
<b>C1043, Trisant</b> (Incidental Closure) <b>*SS10 &amp; SS12</b>	Length of road which extends from its junction with the U1160, S. for a distance of approximately 2620m to its junction with the C1022. SN 714758-718738	18:00 06/09/2025 – 20:00 07/09/2025
<b>Bronwaun, Trisant</b> (Incidental Closure) <b>*SS10 &amp; SS12</b>	Length of road which extends from its junction with the U1160, S. for a distance of approximately 490m to the end of adopted road. SN 718763-720758	18:00 06/09/2025 – 20:00 07/09/2025
<b>C1061, Devils Bridge</b> (Incidental Closure) <b>*SS10 &amp; SS12</b>	Length of road which extends from its junction with the C1145, S.W. for a distance of approximately 1970m to its junction with the C1043. SN 729764-721750	18:00 06/09/2025 – 20:00 07/09/2025
<b>U1180, Trisant</b> (Incidental Closure) <b>*SS10 &amp; SS12</b>	Length of road which extends from its junction with the C1061, S.E. for a distance of approximately 220m to the end of adopted road. SN 725750-726749	18:00 06/09/2025 – 20:00 07/09/2025
<b>U1158, Devils Bridge</b> (Incidental Closure) <b>*SS10 &amp; SS12</b>	Length of road which extends from its junction with the C1145, N.W. for a distance of approximately 630m to its junction with the A4120. SN 732764-729768	18:00 06/09/2025 – 20:00 07/09/2025
<b>U1159, Devils Bridge</b> (Incidental Closure) <b>*SS10 &amp; SS12</b>	Length of road which extends from its junction with the C1145, S.E. for a distance of approximately 315m to its junction with the B4343. SN 734764-736762	18:00 06/09/2025 – 20:00 07/09/2025





<b>B4343, Devils Bridge</b> (Incidental Closure) <b>*SS10 &amp; SS12</b>	Length of road which extends from its junction with the C1145, N. for a distance of approximately 560m to its junction with the A4120. SN 735764-737768	18:00 06/09/2025 – 20:00 07/09/2025
<b>Heol Elenydd, Devils Bridge</b> (Incidental Closure) <b>*SS10 &amp; SS12</b>	Length of road which extends from its junction with the B4343, E. for a distance of approximately 105m to the end of adopted road. SN 735766-736766	18:00 06/09/2025 – 20:00 07/09/2025
<b>Rhos Y Gell, Devils Bridge</b> (Incidental Closure) <b>*SS10 &amp; SS12</b>	Length of road which extends from its junction with the B4343, S.W. for a distance of approximately 825m to the end of adopted road. SN 739752-734748	18:00 06/09/2025 – 20:00 07/09/2025
<b>U1174, Devils Bridge</b> (Incidental Closure) <b>*SS10 &amp; SS12</b>	Length of road which extends from its junction with the B4343, S.W. for a distance of approximately 640m to the end of adopted road. SN 743747-737745	18:00 06/09/2025 – 20:00 07/09/2025
<b>B4343, Pontrhydygroes</b> (Incidental Closure) <b>*SS10 &amp; SS12</b>	Length of road which extends from its junction with the B4574, S.W. for a distance of approximately 1110m to its junction with the C1022. SN 750733-741727	18:00 06/09/2025 – 20:00 07/09/2025
<b>B4574, Cwmystwyth</b> (Incidental Closure) <b>*SS10 &amp; SS12</b>	Length of road which extends from its junction with the C1151, E. for a distance of approximately 1120m to its junction with the C1118. SN 771740-781741	18:00 06/09/2025 – 20:00 07/09/2025
<b>B4574, Cwmystwyth</b> (Incidental Closure) <b>*SS10 &amp; SS12</b>	Length of road which extends from its junction with the C1118, N.W. for a distance of approximately 1430m to its junction with the C1151. SN 781741-773750	18:00 06/09/2025 – 20:00 07/09/2025
<b>C1148, Cwmystwyth</b> (Incidental Closure) <b>*SS10 &amp; SS12</b>	Length of road which extends from its junction with the B4574, N.E, by S. for a distance of approximately 3650m to its junction with the C1118. SN 777743-789740	18:00 06/09/2025 – 20:00 07/09/2025
<b>Un-named Road, Cwmystwyth</b> (Incidental Closure) <b>*SS10 &amp; SS12</b>	Length of road which extends from its junction with the C1148, E. for a distance of approximately 70m to the end of adopted road. SN 789740-790740	18:00 06/09/2025 – 20:00 07/09/2025



<b>C1118, Cwmystwyth</b> (Incidental Closure) <b>*SS10 &amp; SS12</b>	Length of road which extends from its junction with the B4574, E. for a distance of approximately 5195m to its junction with the U1368. SN 781741-826755	18:00 06/09/2025 – 20:00 07/09/2025
<b>U1351, Cwmystwyth</b> (Incidental Closure) <b>*SS10 &amp; SS12</b>	Length of road which extends from its junction with the C1118, S.W. for a distance of approximately 195m to the end of adopted road. SN 790738-788737	18:00 06/09/2025 – 20:00 07/09/2025

## SCHEDULE 2.

### LENGTHS OF COUNTY ROAD TO BE SUBJECT TO 24 HOUR CLEARWAY RESTRICTIONS ON BOTH SIDES OF THE CARRIAGEWAY

The 24-Hour Clearway Restrictions in **Schedule 2** are being introduced along the following sections of road, all rally stages or incidental closures, as mentioned in **Schedule 1** of this Notice, on the grounds of road safety and to prevent obstruction to the flow of traffic by spectator parking.

2.

Road Descriptor	Extent	Times
All *SS Roads stated above.	As described under the heading; Length of Road to be Closed to Vehicular Traffic, Pedestrians, Quad Bikes, Cyclists and Horse Riders.	As stated above.
<b><u>SS Qualifying &amp; Shakedown - Pendam</u></b>		
<b>Un-named Road, Ponterwyd</b> (Open Road – Clearway) SS & QS	Length of road which extends from its junction with the A44T, N. for a distance of approximately 460m to its junction with the C1142. SN 749808-749812	21:00 04/09/2025 – 23:59 05/09/2025
<b>C1142, Ponterwyd</b> (Open Road – Clearway) SS & QS	Length of road which extends from its junction with the A44T, W. for a distance of approximately 170m to its junction with Un-named road. SN 751811-749812	21:00 04/09/2025 – 23:59 05/09/2025



<b>A4120, Ponterwyd</b> (Open Road – Clearway) SS & QS	Length of road which extends from its junction with the A44T, S.E. for a distance of approximately 710m to approximately 295m N.W. of the property known as Brynchwith. SN 749808-752802	21:00 04/09/2025 – 23:59 05/09/2025
---	---	--

**SS2 & SS5**  
**Cwm Elan –**  
**Powys**

<b>C1206</b> <b>Cwm Elan</b> (Open Road – Clearway) SS2 & SS5	Length of road which extends from its junction with B4518 for a distance of approximately 3057m to the south western side of Garreg Ddu Dam. SN 909638-933652	18:00 05/09/2025 – 23:59 06/09/2025
---	--	--

**SS4 & SS7**  
**Mydroilyn**

<b>B4339,</b> <b>Ciliau Aeron</b> (Open Road – Clearway) SS4 & SS7	Length of road which extends from its junction with the A482, S. for a distance of approximately 1200m to its junction with the U5182. SN 501590-501581	18:00 05/09/2025 – 23:59 06/09/2025
--	--	--

<b>U5182,</b> <b>Ciliau Aeron</b> (Open Road – Clearway) SS4 & SS7	Length of road which extends from its junction with the A482, S. for a distance of approximately 860m to its junction with the B4339. SN 505588-501581	18:00 05/09/2025 – 23:59 06/09/2025
--	---	--

<b>C1146,</b> <b>Mydroilyn</b> (Open Road – Clearway) SS4 & SS7	Length of road which extends from its junction with the C1062, S. for a distance of approximately 1290m to its junction with the B4342C. SN 456567-455555	18:00 05/09/2025 – 23:59 06/09/2025
---	--	--

<b>B4342C,</b> <b>Mydroilyn</b> (Open Road – Clearway) SS4 & SS7	Length of road which extends from its junction with the C1146, W. for a distance of approximately 925m to its junction with the C1062. SN 446557-455555	18:00 05/09/2025 – 23:59 06/09/2025
--	--	--

<b>B4338,</b> <b>Gorsgoch</b> (Open Road – Clearway) SS4 & SS7	Length of road which extends from its junction with the C1021, N.W. for a distance of approximately 370m to its junction with the U5348. SN 485503-482506	18:00 05/09/2025 – 23:59 06/09/2025
--	--	--



<b>U5348,</b> <b>Gorsgoch</b> (Open Road – Clearway) SS4 & SS7	Length of road which extends from its junction with the B4338, N. for a distance of approximately 510m to the end of adopted road. SN 482506-485509	18:00 05/09/2025 – 23:59 06/09/2025
--	--	--

**SS9 & SS11**  
**Nant-Y-Moch**

<b>U1048,</b> <b>Talybont</b> (Open Road – Clearway) SS9 & SS11	Length of road which extends from its junction with the C1019, W. for a distance of approximately 220m to its junction with the C1133. SN 658893-656893	18:00 06/09/2025 – 20:00 07/09/2025
---	--	--

<b>C1133,</b> <b>Talybont</b> (Open Road – Clearway) SS9 & SS11	Length of road which extends from its junction with the U1048, S.W. for a distance of approximately 270m to its junction with the A487T. SN 656893-654891	18:00 06/09/2025 – 20:00 07/09/2025
---	--	--

<b>C1016,</b> <b>Ponterwyd</b> (Open Road – Clearway) SS9 & SS11	Length of road which extends from its junction with the A44T, N.W. for a distance of approximately 1245m to the property known as Cragnant Mawr. SN 748808-742818	18:00 06/09/2025 – 20:00 07/09/2025
--	--	--

<b>A4120,</b> <b>Ponterwyd</b> (Open Road – Clearway) SS9 & SS11	Length of road which extends from its junction with the A44T, S. for a distance of approximately 710m to its junction with the B4343. SN 749808-751803	18:00 06/09/2025 – 20:00 07/09/2025
--	---	--

**SS10 & SS12**  
**Mynnydd Bach**

<b>C1055,</b> <b>Llanfihangel-Y-Creuddyn</b> (Open Road – Clearway) SS10 & SS12	Length of road which extends from its junction with the U1171, S.E. for a distance of approximately 1120m to its junction with the U1170. SN 655760-665760	18:00 06/09/2025 – 20:00 07/09/2025
---	---	--

<b>U1154,</b> <b>Llanfihangel-Y-Creuddyn</b> (Open Road – Clearway) SS10 & SS12	Length of road which extends from its junction with the C1055, N. for a distance of approximately 1410m to its junction with the C1052. SN 664761-660774	18:00 06/09/2025 – 20:00 07/09/2025
---	---	--





<b>U1169, Llanfihangel-Y- Creuddyn</b> (Open Road – Clearway) SS10 & SS12	Length of road which extends from its junction with the C1055, W. for a distance of approximately 230m to the end of adopted road. SN 665760-663760	18:00 06/09/2025 – 20:00 07/09/2025
<b>U1170, Llanfihangel-Y- Creuddyn</b> (Open Road – Clearway) SS10 & SS12	Length of road which extends from its junction with the C1055, S. for a distance of approximately 500m to its junction with the U1171. SN 665760-664755	18:00 06/09/2025 – 20:00 07/09/2025
<b>C1055, Llanfihangel-Y- Creuddyn</b> SS10 & SS12	Length of road which extends from its junction with the U1170, W. for a distance of approximately 625m to the property known as Abertrinant. SN 665760-671759	18:00 06/09/2025 – 20:00 07/09/2025
<b>A4120, Devils Bridge</b> (Open Road – Clearway) SS10 & SS12	Length of road which extends from the private road leading to the property known as Rhyd Gelli Dywyll, E. for a distance of approximately 2800m to the entrance of the Woodlands Tea Rooms. SN 720772-744772	18:00 06/09/2025 – 20:00 07/09/2025

### SCHEDULE 3

#### LENGTHS OF TRUNK ROAD TO BE SUBJECT TO 24-HOUR CLEARWAY RESTRICTIONS ON BOTH SIDES OF THE CARRIAGEWAY

3.

Road Descriptor	Location	Times
<b><u>SS Qualifying &amp; Shakedown - Pendarn</u></b>		
<b>A44T, Ponterwyd</b> (Open Road – Clearway) SS & QS	Length of road which extends from its junction with the U1113, W. for a distance of approximately 6.95km to approximately 100m W. of the property known as Gelli Isaf. SN 748808-709839	21:00 04/09/2025 – 23:59 05/09/2025
<b><u>SS3 &amp; SS6 Y Diafol – Powys</u></b>		



<b>A483T</b> <b>Y Diafol</b> (Open Road – Clearway) SS3 & SS6	Length of road which extends from its junction with C0024 for a distance of approximately 1751m to private access road leading to Llwyngwilym. SN 922506-912507	18:00 05/09/2025 – 23:59 06/09/2025
---	---	--

**SS9 & SS11**  
**Nant-Y-Moch**

<b>A44T,</b> <b>Ponterwyd</b> (Open Road – Clearway) SS9 & SS11	Length of road which extends from approximately 100m N.W of its junction with the C1073, E. for a distance of approximately 5685m to its junction with the B4343. SN 724812-771814	18:00 06/09/2025 – 20:00 07/09/2025
---	--	--

#### **SCHEDULE 4**

#### **LENGTHS OF PUBLIC RIGHTS OF WAY / BYWAYS OPEN TO ALL TRAFFIC / BRIDLEWAYS TO BE CLOSED TO PEDESTRIANS, VEHICLES, CYCLISTS AND HORSE RIDERS**

For safety reasons the following Public Rights of Way/Byways Open to all Traffic/Bridleways will be subject to the above restriction at the entrance and egress points onto the roads listed in **Schedule 1** as **\*SS Rally Stage Closures and Reserve Stage Closures**.

4.

<b>Road Descriptor</b>	<b>Location</b>	<b>Times</b>
<b>Pendam</b> <b>SS Qualifying &amp;</b> <b>Shakedown</b>	18/68, 14/86, 14/86, 14/85, 14/76, 14/83, 14/82, 14/79, 9/79, 9/67, 9/66, 9/65	21:00 04/09/2025 – 23:59 05/09/2025
<b>Aberystwyth</b> <b>*SS1 &amp; SS8</b>	11/9, 11/23, 11/8	06:00 05/09/2025 – 23:59 06/09/2025
<b>Cwm Elan</b> <b>SS2 &amp; SS5</b>	N/A	18:00 05/09/2025 – 23:59 06/09/2025
<b>Y Diafol</b> <b>SS3 &amp; SS6</b>	32/35, Byway 030/14/1	18:00 05/09/2025 – 23:59 06/09/2025
<b>Mydroilyn</b> <b>SS4 &amp; SS7</b>	52/11, 52/8, 52/7, 52/5, 52/19, 51/106, 51/127, 51/128, 51/129, 51/136, 51/137, 51/134, 51/135, 59/2, 59/5, 59/1, 51/120	18:00 05/09/2025 – 23:59 06/09/2025
<b>Nant-Y-Moch</b> <b>SS9 &amp; SS11</b>	18/49, 18/50, 18/49, 18/51, 14/87, 14/81, 14/85, 9/82/5, 9/86/5, 9/83, 6/67, 6/65, 6/52, 6/121, 6/53, 6/29, 6/22, 6/26	18:00 06/09/2025 – 20:00 07/09/2025



**Mynnydd Bach  
SS10 & SS12**

20/48, 20/72, 20/35, 20/36, 20/33, 20/34, 20/36, 18:00 06/09/2025 –  
20/37, 20/24, 20/39, 20/40, 20/38, 20/44, 20/41, 20:00 07/09/2025  
20/13, 20/14, 20/11, 20/15, 20/17, 20/6, 20/2,  
20/7, 20/1, 19/18, 19/26, 19/20, 19/23, 19/31

**SCHEDULE 5**

**Alternative routes**, where appropriate, will be in operation and signed during the periods of road closure. Please see attached plans showing the dedicated alternative routes.

**Nothing in Schedules 1 and 2** of these Orders shall apply to any vehicle being used by the emergency services, vehicles being used in connection with the event, including recovery vehicles, giving rise to these Orders, residents displaying a Pass will be excluded from these Orders at the discretion of the event organisers, or anything done with the permission or under the direction of a police officer.

Under the direction of a police officer any vehicle causing an obstruction along a rally stage, incidental closure or clearway, as identified in the mentioned schedules, may be removed to a safe parking facility at cost to the vehicle owner.

Pedestrian access to residential properties on or adjacent to the road on the route stages will be permitted at safe intervals and will be escorted by marshals on site.

Alternative routes for the road closures, where available, will be signed appropriately.

The restrictions within the schedules of the S.16A (Special Events Act 1994) Order will commence at 21:00 on 4<sup>th</sup> September 2025 and continue until 20:00 hours on 7<sup>th</sup> September 2025 or as specified in the schedules of this notice, and where appropriate signs are showing; to facilitate the Rali Ceredigion All Roads Closed Rally 2025.

The restrictions within the schedules of the S.12A-12C of the Road Traffic Act 1988 (Motor Racing) (Wales) 2018 Order will commence at 21:00 on 4<sup>th</sup> September 2025 and continue until 20:00 hours on 7<sup>th</sup> September 2025 or as specified in the schedules **SS. Street Stage Closure** of this notice, and where appropriate signs are showing; to facilitate the stages of the Rali Ceredigion All Roads Closed Rally 2025.





**JDS MACHINERY**  
**RALI 2025**  
**CEREDIGION**

Service Area  
**ABERYSTWYTH**

**Key:**

- **RALLY TRAFFIC ONLY**
- **REGIMENT ACCESS ONLY WITH PASS**
- **CLEARWAY - NO PARKING**

**Road Closed:**

**Friday 5th  
 September 2025**

**06:00hrs**

**Road Open:**

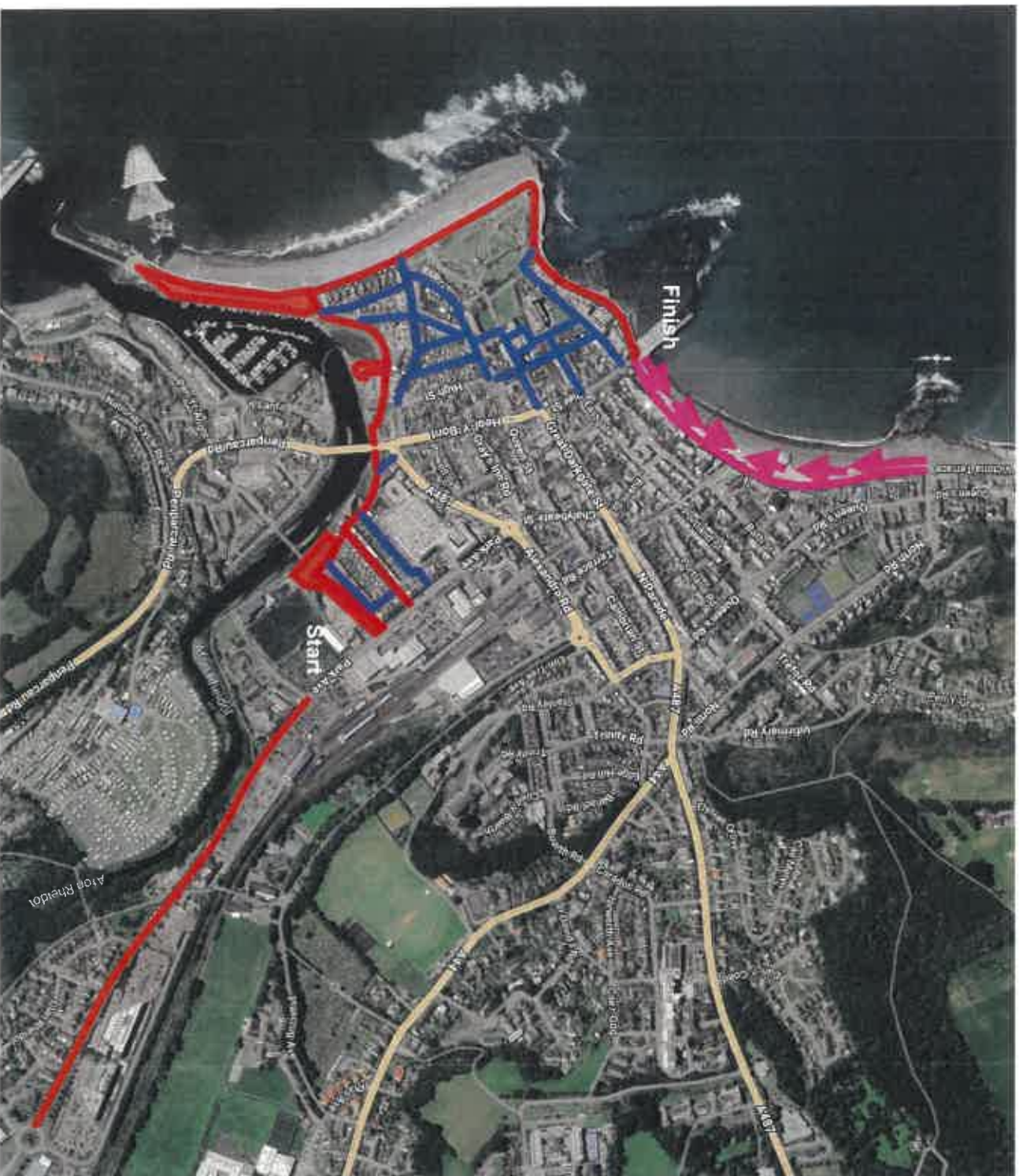
**Sunday 7th  
 September 2025**

**20:00hrs**

**All roads marked  
 red and green are  
 Clearways**







**JDS MACHINERY**  
**RALI** 2025  
**CEREDIGION**

**SS1 & 8 & Service Area**

**ABERYSTWYTH**

**Key:**

- **RALLY TRAFFIC ONLY**
- **RESIDENT ACCESS ONLY WITH PASS**
- **CLEARWAY - NO PARKING**

**Road Closed:**  
**Friday 5th**  
**September 2025**

**06:00hrs**

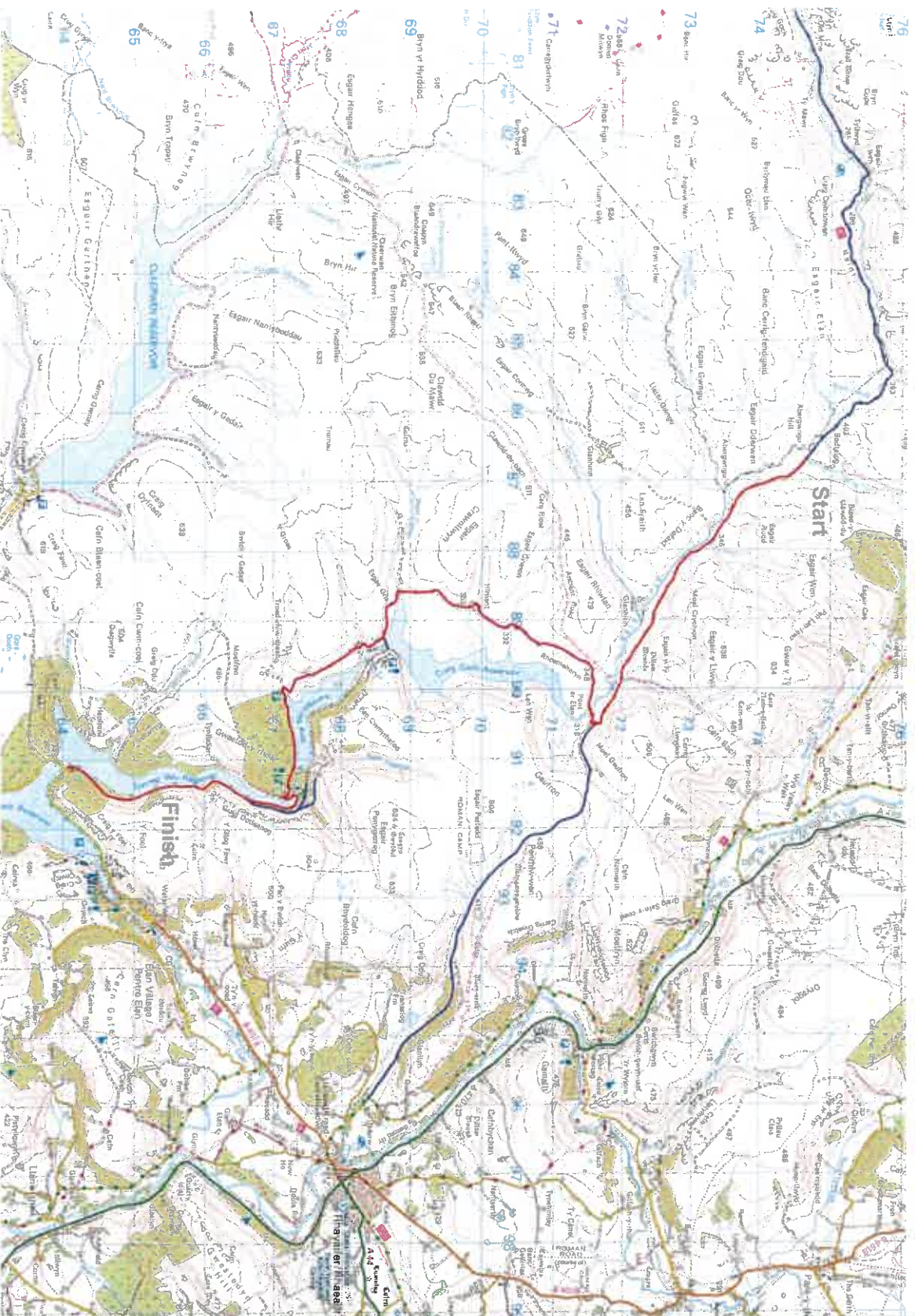
**Road Open:**  
**Saturday 6th**  
**September 2025**

**23:59hrs**

**All roads marked red and green are Clearways**







**JDS MACHINERY**  
**RALI 2025**  
**CERREDIGION**

**SS2 & 5**

**CWM ELAN**

**Key:**

**— RALLY TRAFFIC ONLY**

**— RESURF ACCESS ONLY WITH PASS**

**CLEARWAY - NO PARKING**

**Road Closed:**

**Friday 5th  
 September 2025**

**18.00hrs**

**Road Open:**

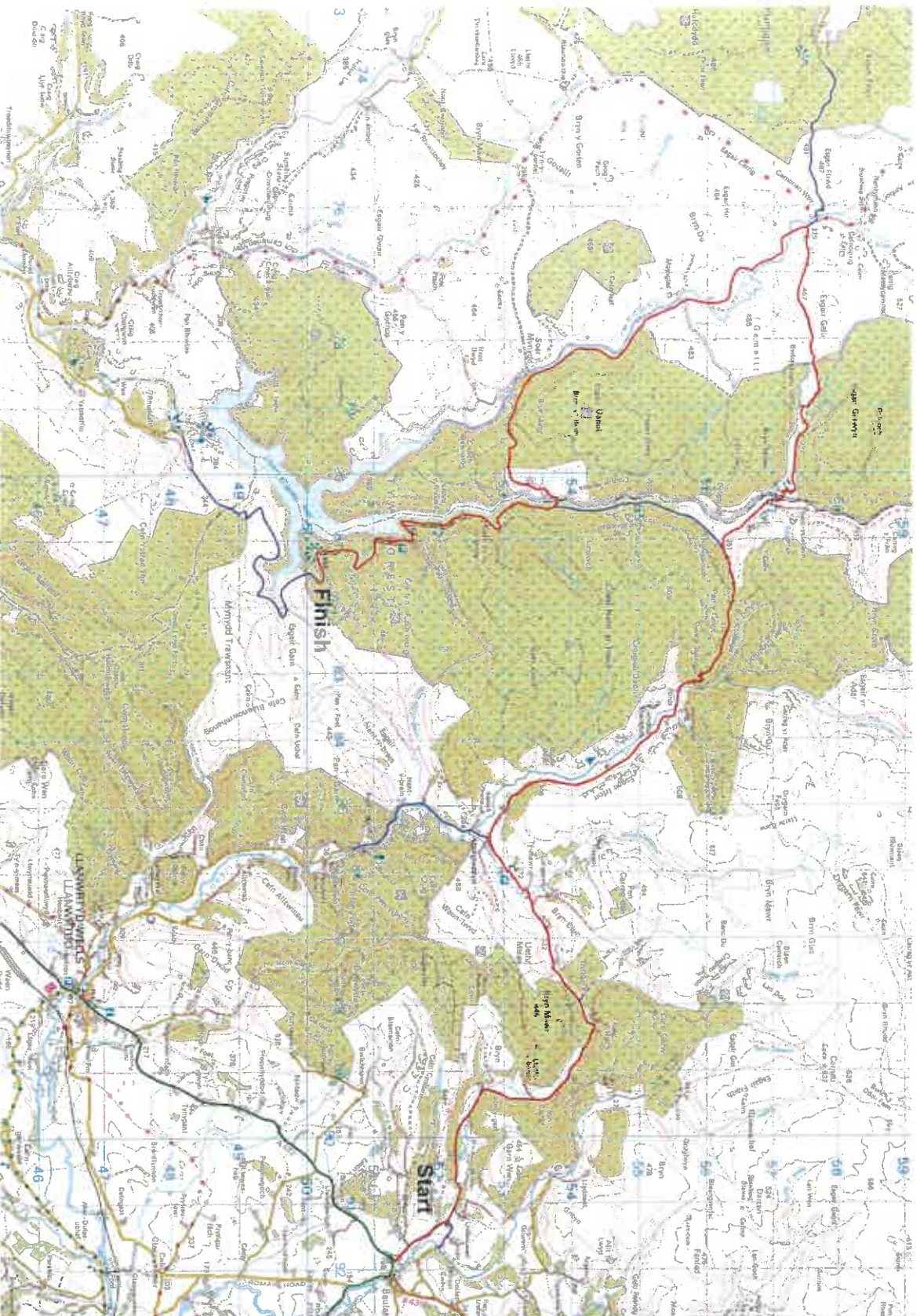
**Saturday 6th  
 September 2025**

**23.59hrs**

**All roads marked  
 red, blue and  
 green are  
 Clearways**







**JDS MACHINERY**  
**RALI 2025**  
**CERREDIGION**

**SS3 & 6**  
**Y DIAFOL**

**Key:**

- **RALLY TRAFFIC ONLY**
- **PERSONAL ACCESS ONLY**
- **CLEARWAY - NO PARKING**

**Road Closed:**  
**Friday 5th**  
**September 2025**

**10:00hrs**

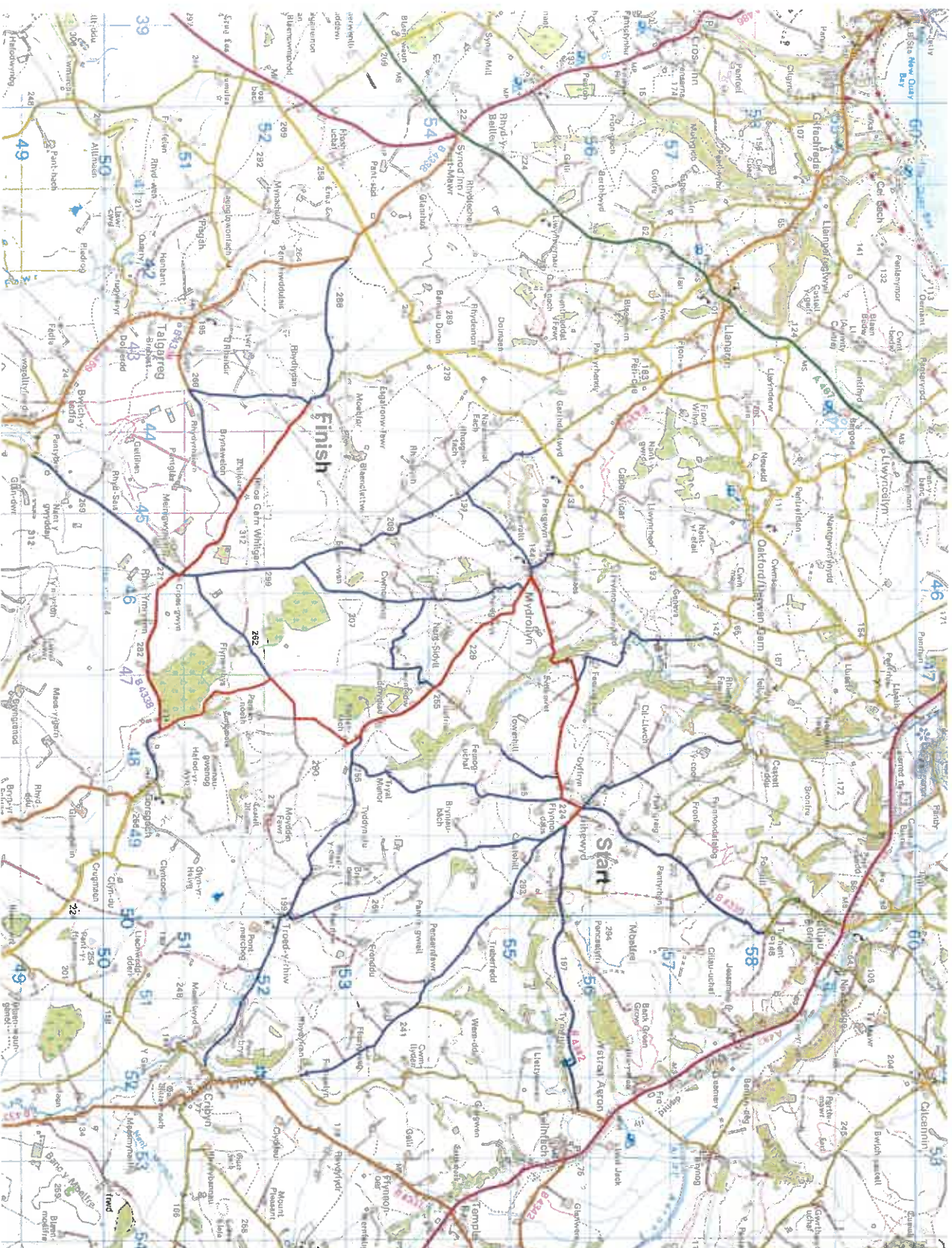
**Road Open:**  
**Saturday 6th**  
**September 2025**

**23:59hrs**

**All roads marked**  
**red, blue and**  
**green are**  
**Clearways**







# **JDS MACHINERY** **RALLY** **CEREDIGION**

**SS4 & 7**

**MYDROIYN**

**Key:**

- RED** RALLY TRAFFIC ONLY
- BLUE** RESCUED ACCESS ONLY WITH PASS
- GREEN** CLEARWAY - NO PARKING

**Road Closed:**

**Friday 5th**  
**September 2025**

**16:00hrs**

**Road Open:**

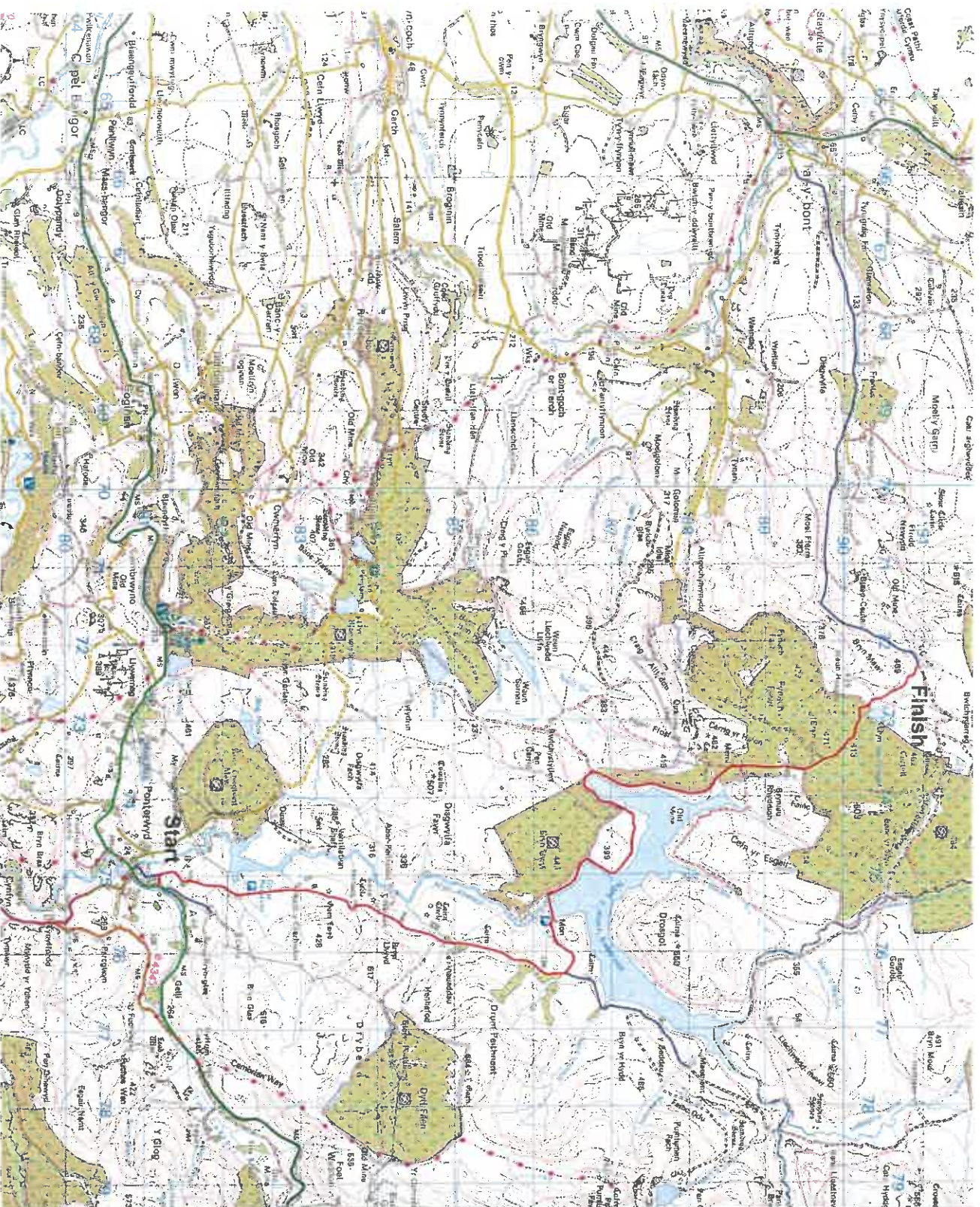
**Saturday 6th**  
**September 2025**

**23:59hrs**

**All roads marked red, blue and green are Clearways**







**JDS MACHINERY**  
**RALI 2025**  
**CEREDIGION**

**SS9 & 11**

**NANT Y MOCH**

**Key:**

**— RALLY TRAFFIC ONLY**

**RESIDENT ACCESS ONLY WITH PASS**

**CLEARWAY - NO PARKING**

**Road Closed:**

**Saturday 6th  
 September 2025**

**18:00hrs**

**Road Open:**

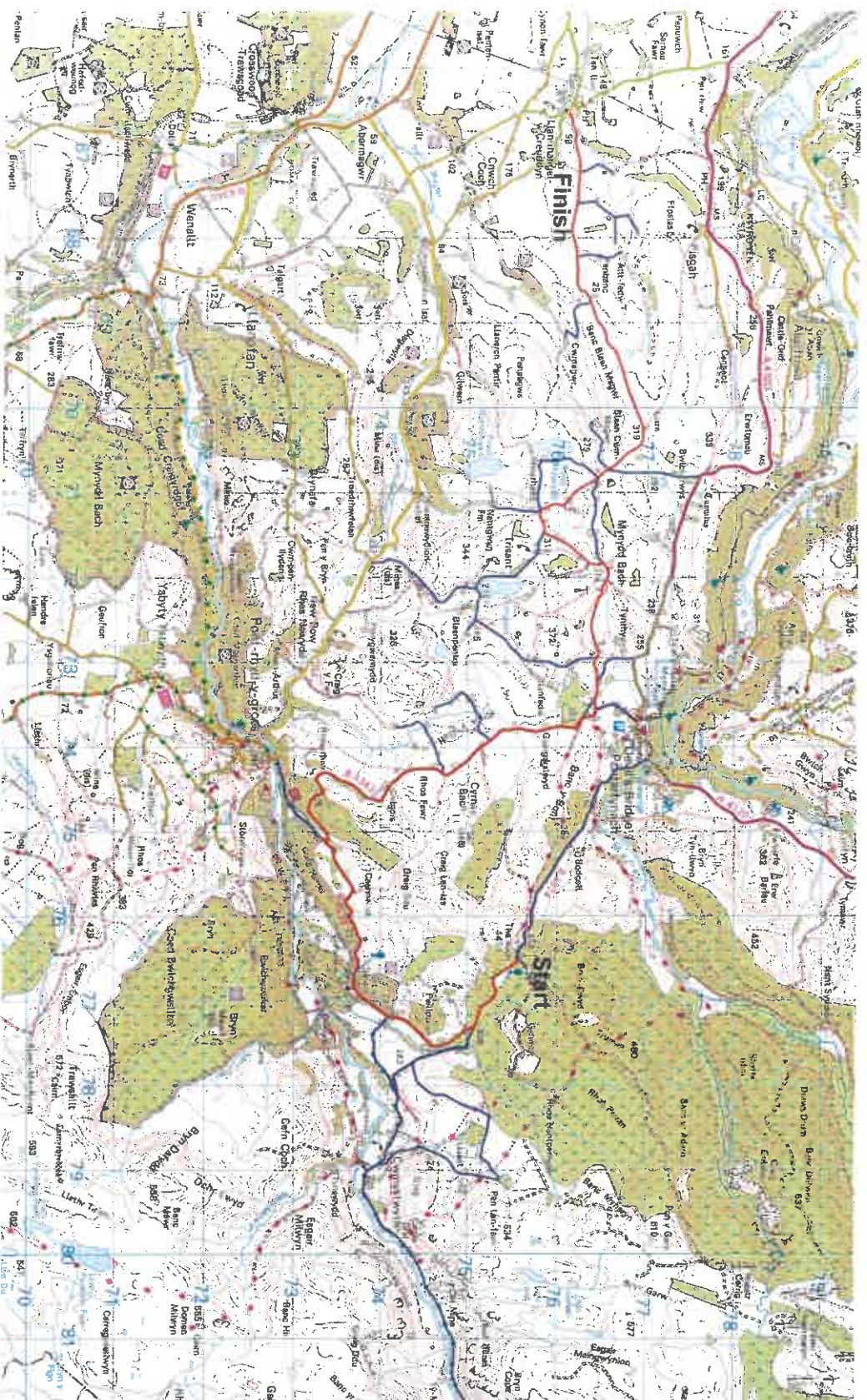
**Sunday 7th  
 September 2025**

**20:00hrs**

**All roads marked  
 red, blue and  
 green are  
 Clearways**







**JDS MACHINERY**  
**RALLY 2025**  
**CEREDIGION**

**SS10 & 12**

**MYNNYDD BACH**

**Key:**

**— RALLY TRAFFIC ONLY**

**— RALLY TRAFFIC ONLY**

**CLEARWAY - NO PARKING**

**Road Closed:**

**Saturday 6th  
September 2025**

**18:00hrs**

**Road Open:**

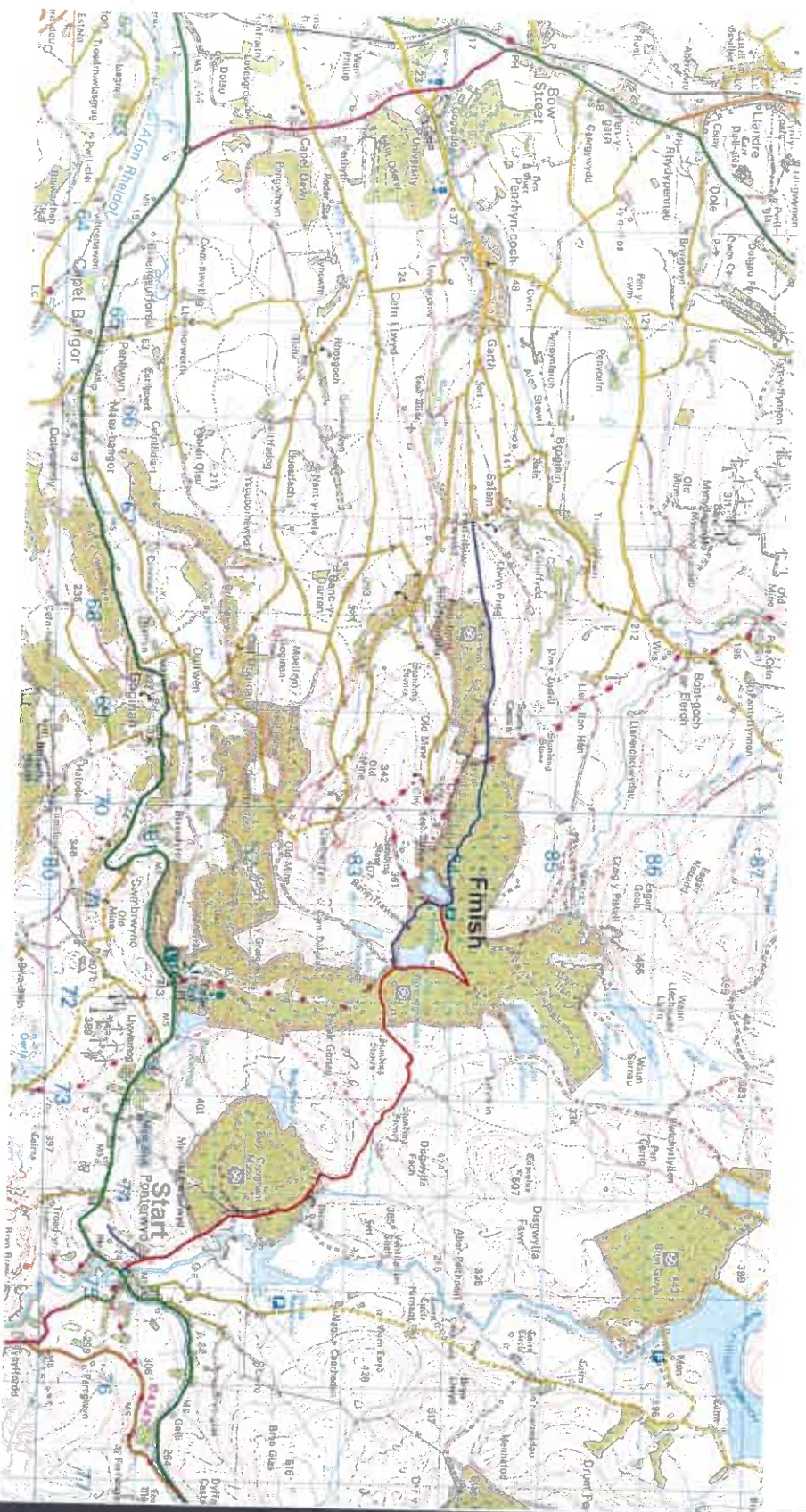
**Sunday 7th  
September 2025**

**20:00hrs**

**All roads marked  
red, blue and  
green are  
Clearways**







**JDS MACHINERY**  
**RALI 30/25**  
**CEREDIGION**

**SS QS &  
Shakedown  
PENDAM**

**Key:**

- RALLY TRAFFIC ONLY**
- RESIDENT ACCESS ONLY WITH PASS**
- CLEARWAY - NO PARKING**

**Road Closed:**

**Thursday 4th  
September 2025**

**21:00hrs**

**Road Open:**

**Friday 5th  
September 2025**

**23:59hrs**

**All roads marked  
red, blue and  
green are  
Clearways**

